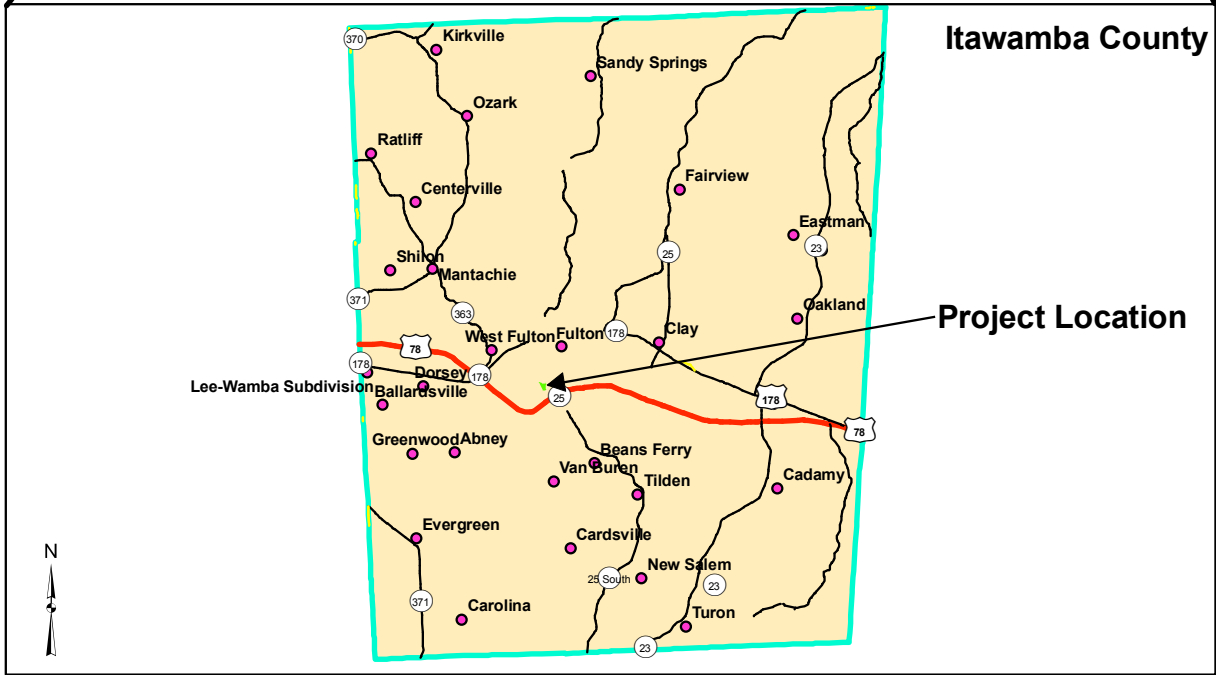


**STATE OF MISSISSIPPI**



**Itawamba County**

**Project Location**

**Legend**

- Populated Place
- US Highway
- State Highway
- County Road

Source: Map adapted from information provided by the Mississippi Geospatial Clearing House.

Prepared By:

**AECOM**



Prepared For:

**FIGURE 1  
PROJECT LOCATION MAP**

BLUEFIRE ETHANOL FULTON  
MISSISSIPPI FACILITY  
FULTON, MISSISSIPPI

SEPT. 2009

09180109.01

**LIQUIDS - FLAMMABLE OR COMBUSTIBLE**

A	ETHANOL, DENATURED (2-5%) OR 200°	270,000-GAL IN MULTIPLE TANKS & IN PROCESS
B	UNLEADED GASOLINE	25,000-GAL IN TANK
C	DIESEL FUEL	4,000-GAL IN TANK & VEHICLES
D	PROPANE	2,000-GAL IN TANK & VEHICLES

**LIQUIDS - NON-FLAMMABLE / NON-COMBUSTIBLE**

E	SULFURIC ACID, 93%	12,000-GAL IN TANK
F	SULFURIC ACID, 15-75%	50,000-GAL IN TANK / 100,000-GAL IN PROCESS
G	PHOSPHORIC ACID, 90%	25,000-GAL IN TANK
H	AMMONIUM HYDROXIDE	4,500-GAL IN TANK
I	SODIUM HYDROXIDE, 5-20%	20,000-GAL IN TANK
J	POTASSIUM HYDROXIDE	12,000-GAL IN TANK
K	BEER	600,000-GAL IN MULTIPLE TANKS
L	YEAST PROTEIN, 20% SOLIDS	70,000-GAL IN MULTIPLE TANKS
M	SCALE & CORROSION INHIBITORS	1,000-GAL IN MULTIPLE TANKS/TOTES
N	FIRE FOAM DETERGENT	1,000-GAL IN TANK

**SOLIDS**






P	BIOMASS (WOODCHIPS, ETC)	3,200 TONS
Q	LIGNIN (50% MOISTURE) FUEL	350 TONS
R	GYPHUM	90 TONS
S	LIMESTONE	600 TONS
T	SLAKED LIME	1,800 TONS
U	BOILER ASH	620 TONS

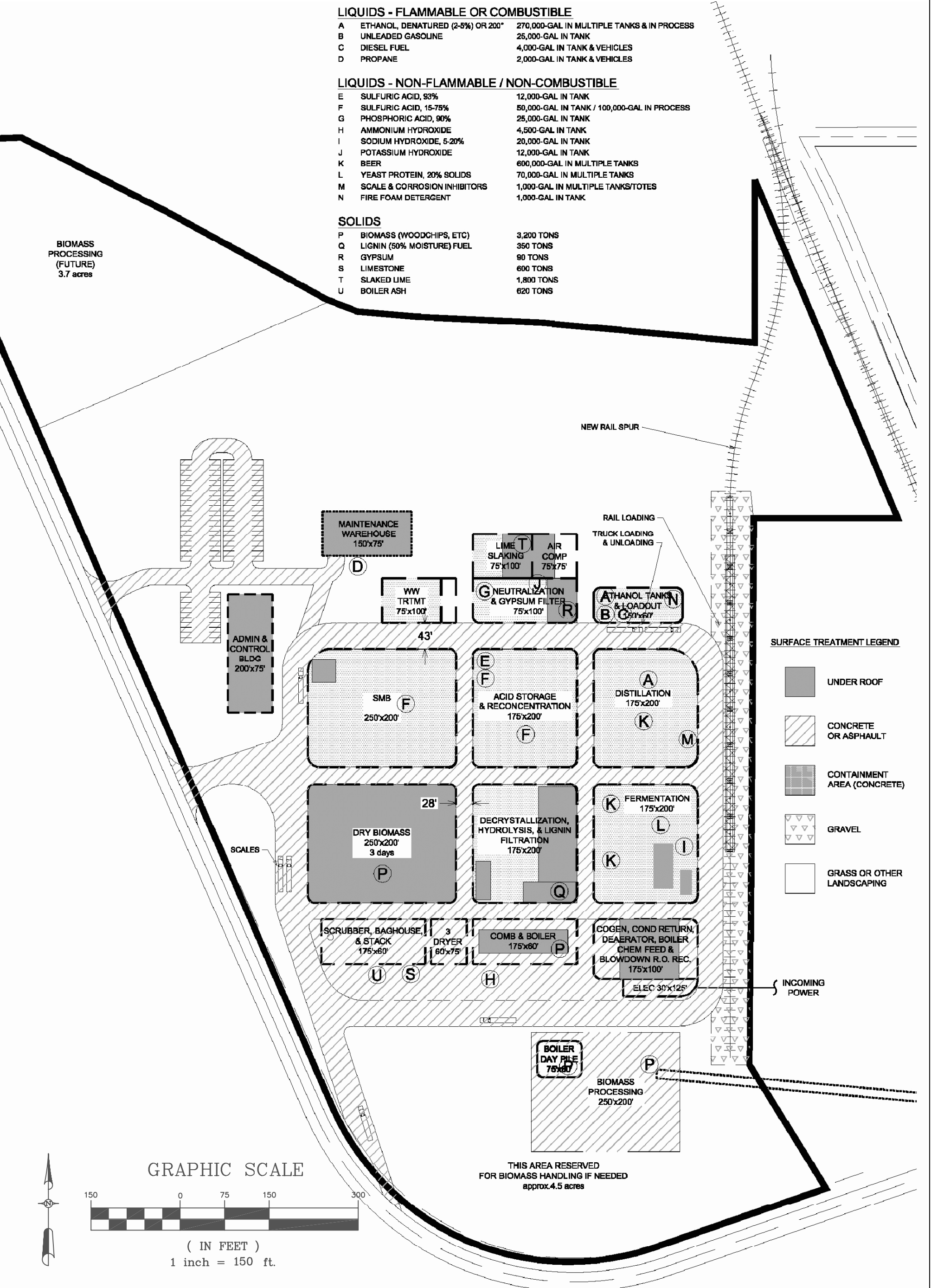
BIOMASS PROCESSING (FUTURE) 3.7 acres

NEW RAIL SPUR

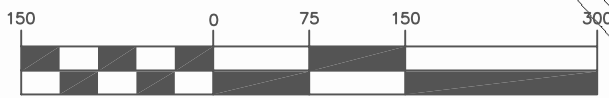
RAIL LOADING TRUCK LOADING & UNLOADING

**SURFACE TREATMENT LEGEND**

-  UNDER ROOF
-  CONCRETE OR ASPHALT
-  CONTAINMENT AREA (CONCRETE)
-  GRAVEL
-  GRASS OR OTHER LANDSCAPING



**GRAPHIC SCALE**



( IN FEET )  
1 inch = 150 ft.

THIS AREA RESERVED FOR BIOMASS HANDLING IF NEEDED approx. 4.5 acres

Prepared by:



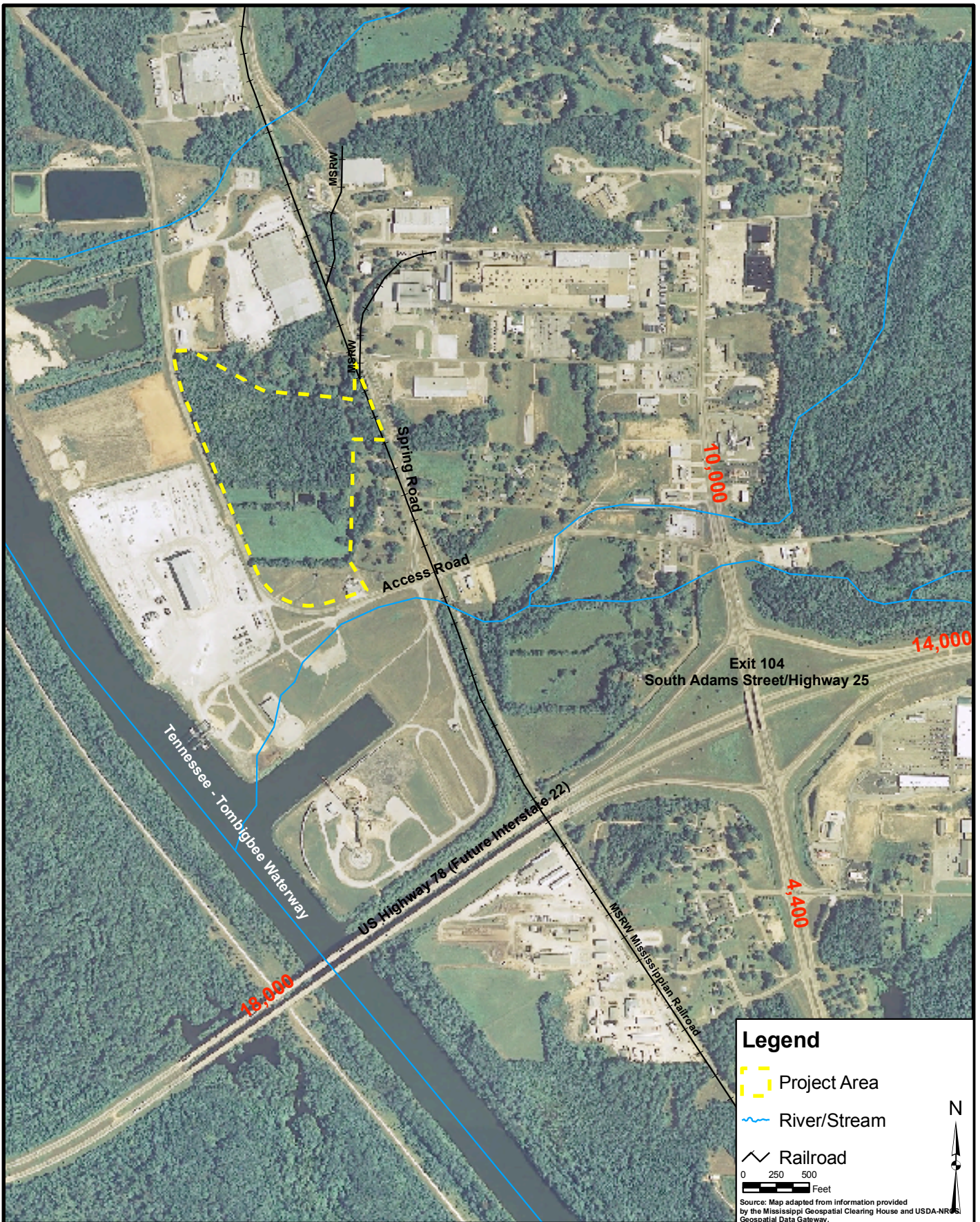
Prepared for:

**FIGURE 2  
PROPOSED FULTON PROJECT SITE**

BLUEFIRE ETHANOL FULTON  
MISSISSIPPI FACILITY  
FULTON, MISSISSIPPI

MARCH 2010

09180109.01



Prepared By:

**AECOM**



Prepared For:

SEPT. 2009

**FIGURE 3**  
**2005-2007 AVERAGE ANNUAL DAILY TRAFFIC MAP**

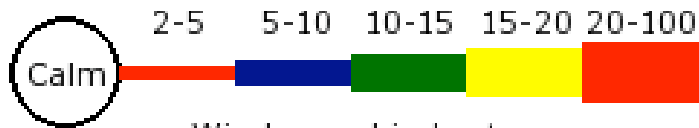
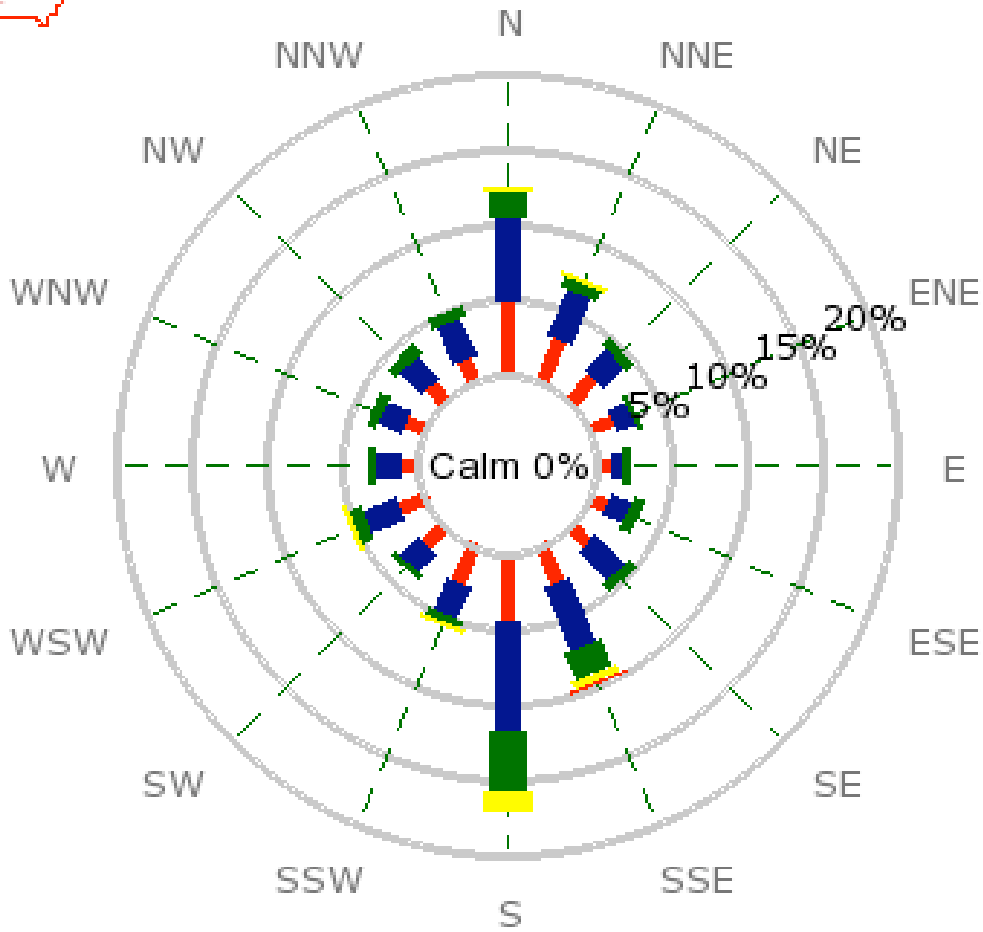
BLUEFIRE ETHANOL FULTON  
MISSISSIPPI FACILITY  
FULTON, MISSISSIPPI

09180109.01



# TUPELO/C.D. LEMONS [TUP] Windrose Plot

During 2008-01-01 12:00 pm - 2008-12-01 12:00 pm



Wind speed in knots  
[7663 obs, avg 7.34 kts]  
plot generated 21 September 2009

Prepared By:



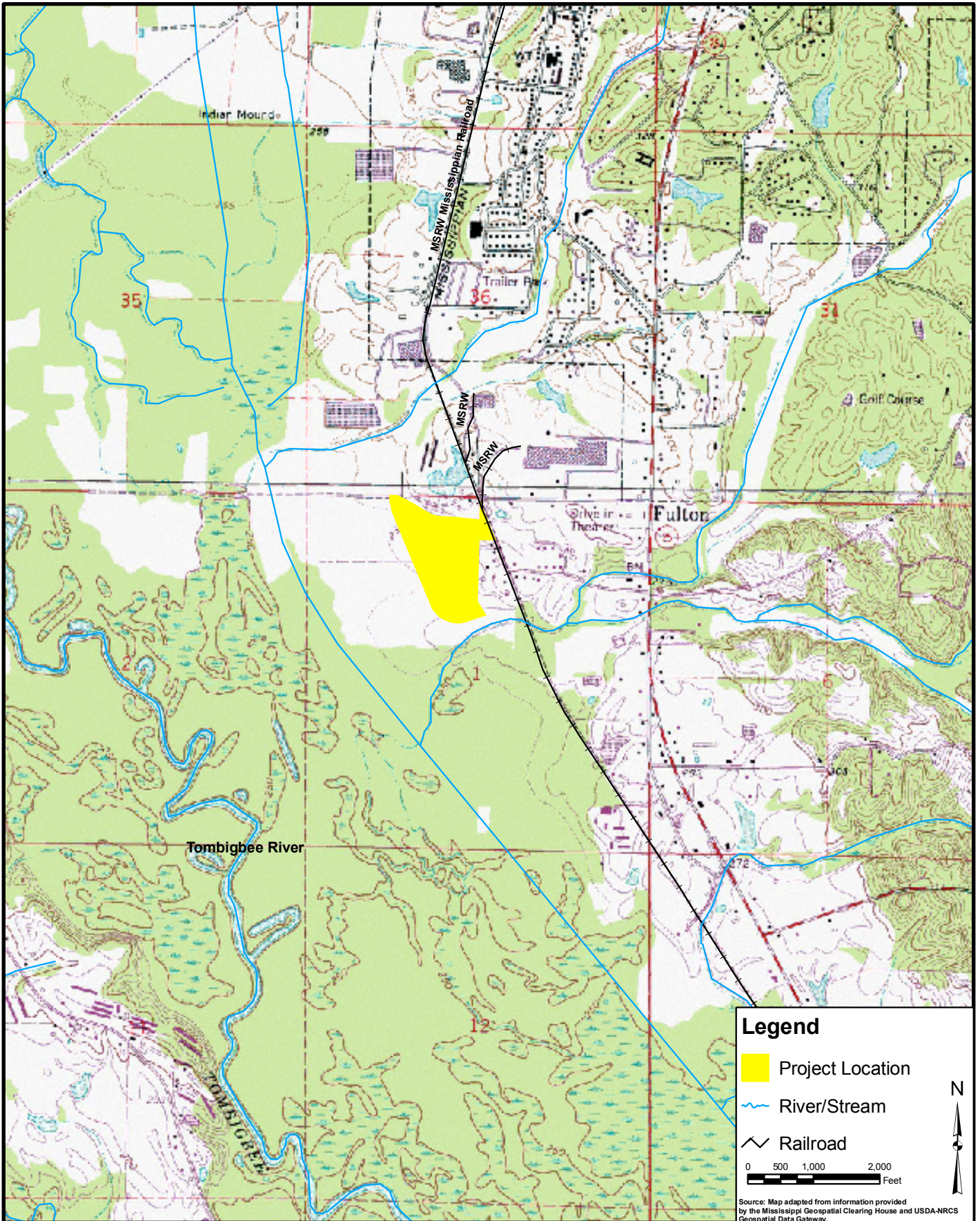
Prepared For:

SEPT. 2009

**FIGURE 4**  
**TUPELO WIND ROSE**

BLUEFIRE ETHANOL FULTON  
MISSISSIPPI FACILITY  
FULTON, MISSISSIPPI

09180109.01



Prepared By:

**AECOM**



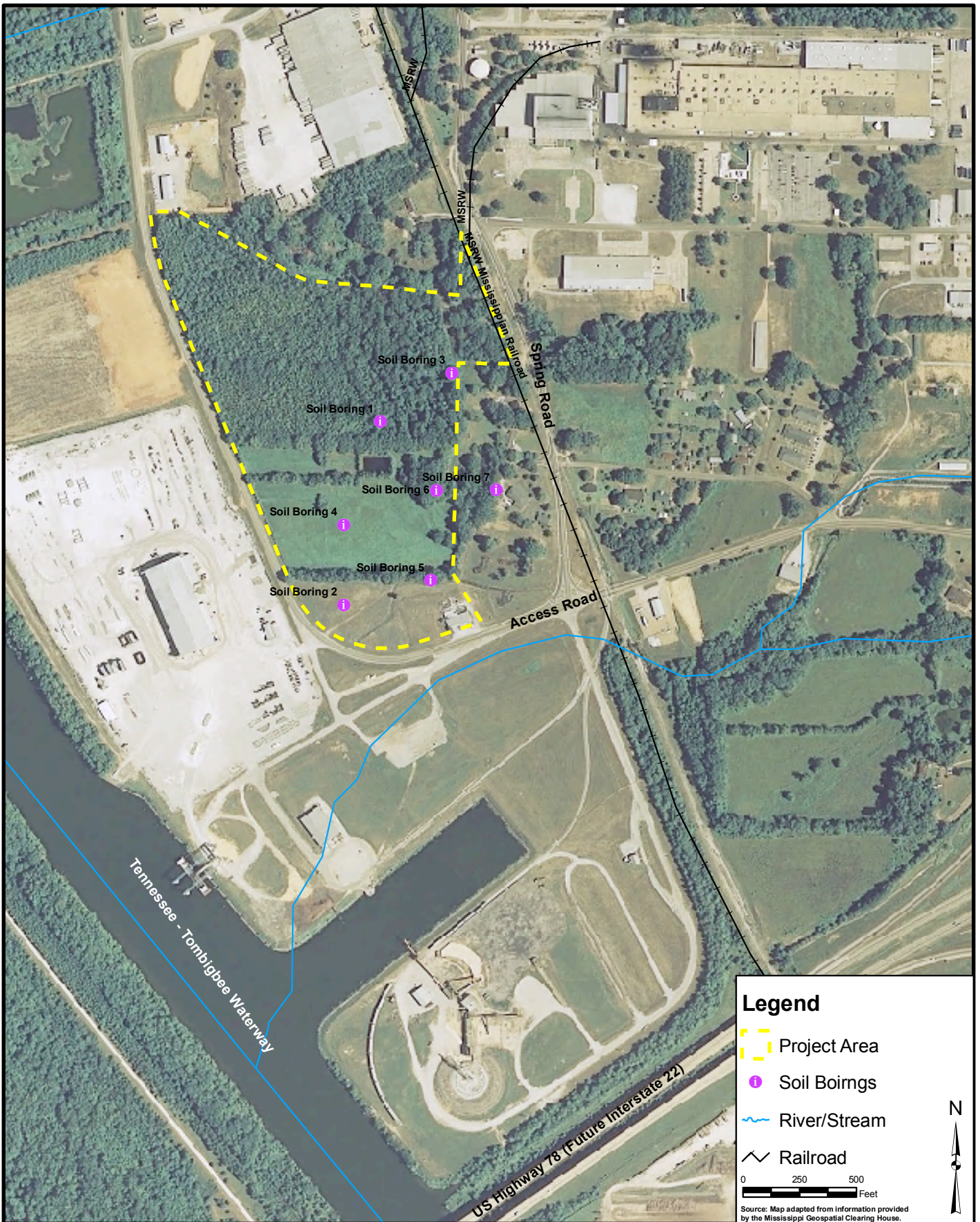
Prepared For:

SEPT. 2009

**FIGURE 5  
FULTON TOPOGRAPHIC MAP**

BLUEFIRE ETHANOL FULTON  
MISSISSIPPI FACILITY  
FULTON, MISSISSIPPI

09180109.01



Prepared By:

**AECOM**



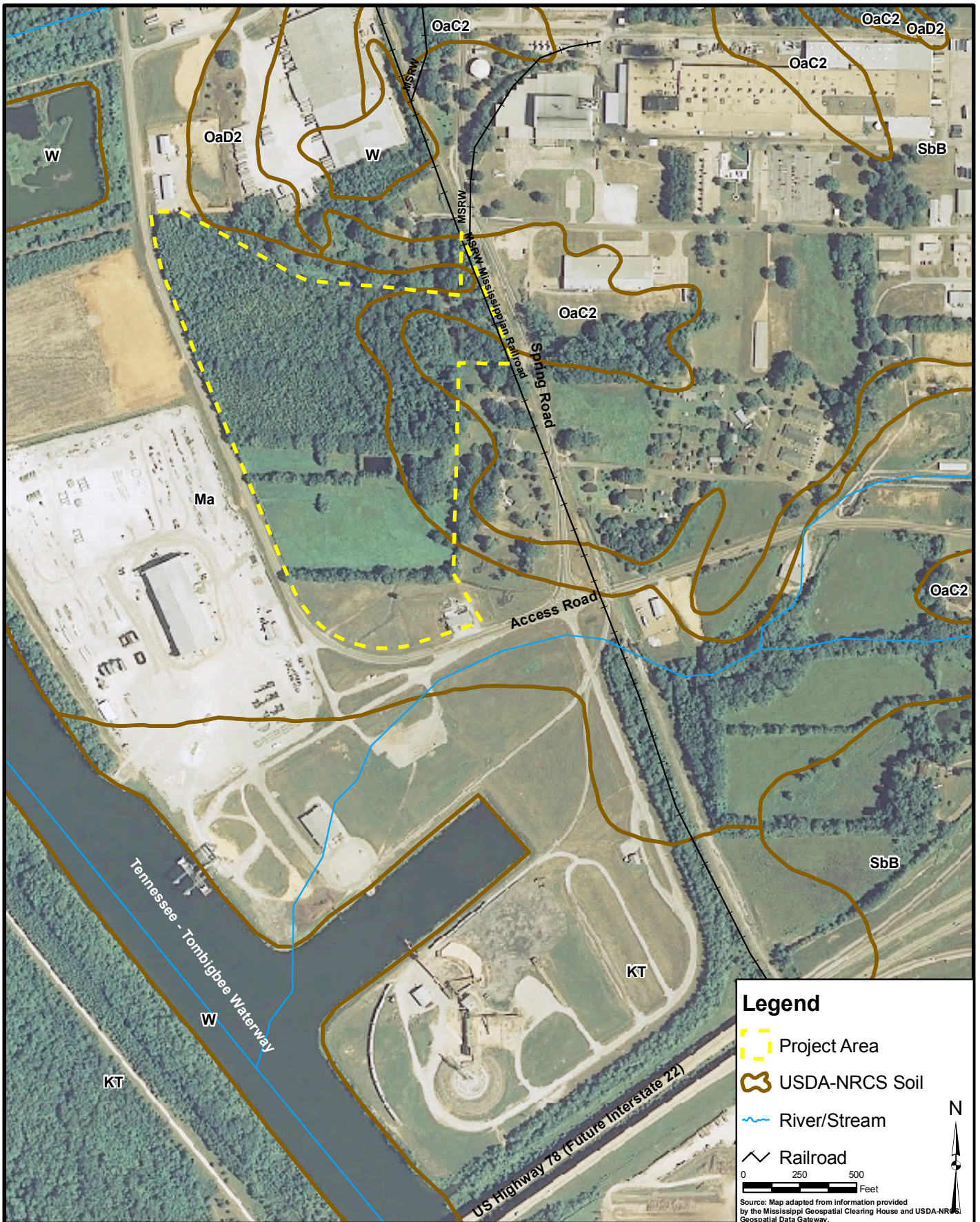
Prepared For:

Sept. 2009

**FIGURE 6  
FULTON PROJECT SITE SOIL BORING LOCATIONS**

BLUEFIRE ETHANOL FULTON  
MISSISSIPPI FACILITY  
FULTON, MISSISSIPPI

09180109.01



**Legend**

- Project Area
- USDA-NRCS Soil
- River/Stream
- Railroad

0 250 500  
Feet

Source: Map adapted from information provided by the Mississippi Geospatial Clearing House and USDA-NRCS Geospatial Data Gateway.

Prepared By:

**AECOM**



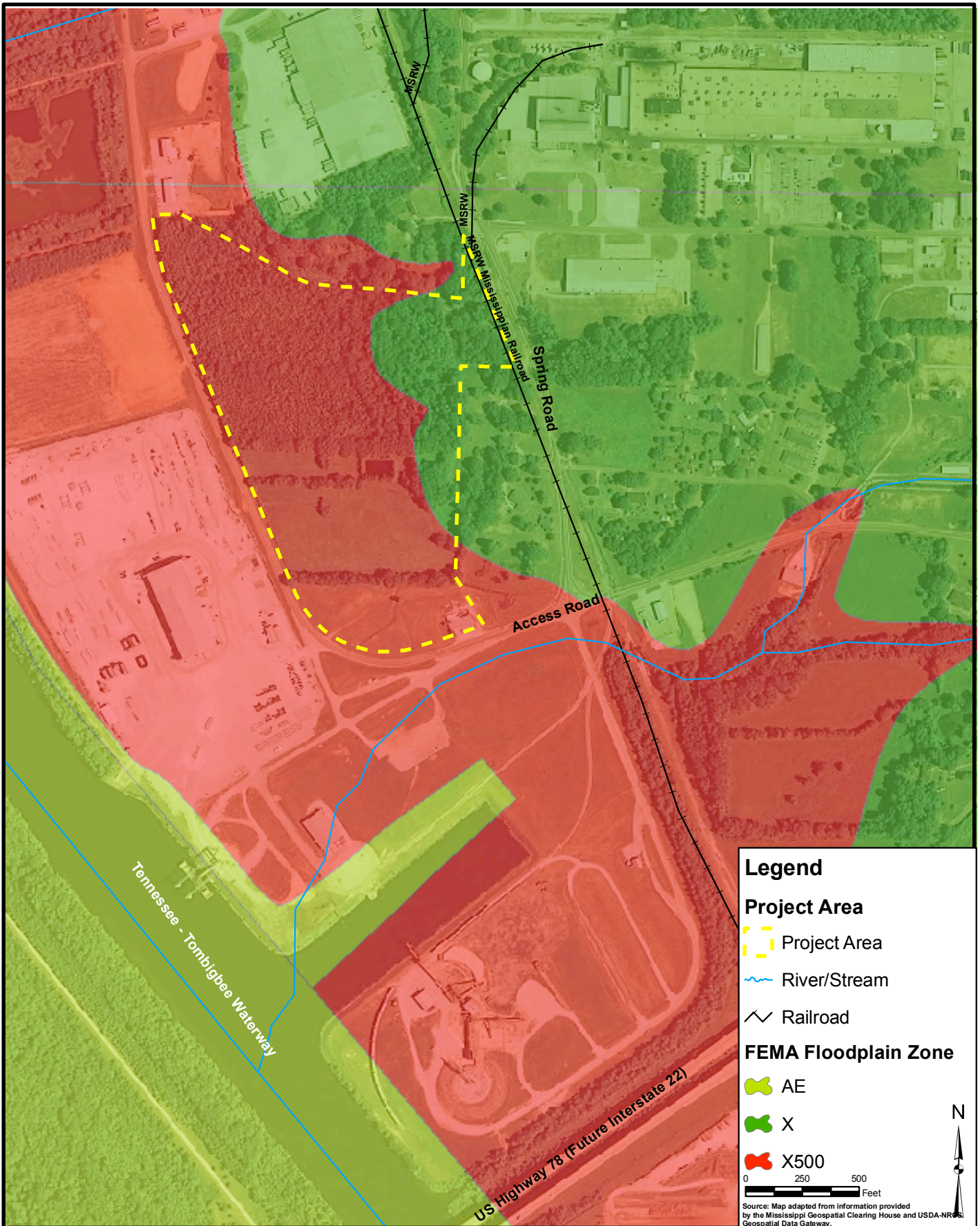
Prepared For:

**FIGURE 7  
FULTON PROJECT SITE USDA-NRCS SOIL MAP**

BLUEFIRE ETHANOL FULTON  
MISSISSIPPI FACILITY  
FULTON, MISSISSIPPI

SEPT. 2009

09180109.01



Prepared By:

**AECOM**



Prepared For:

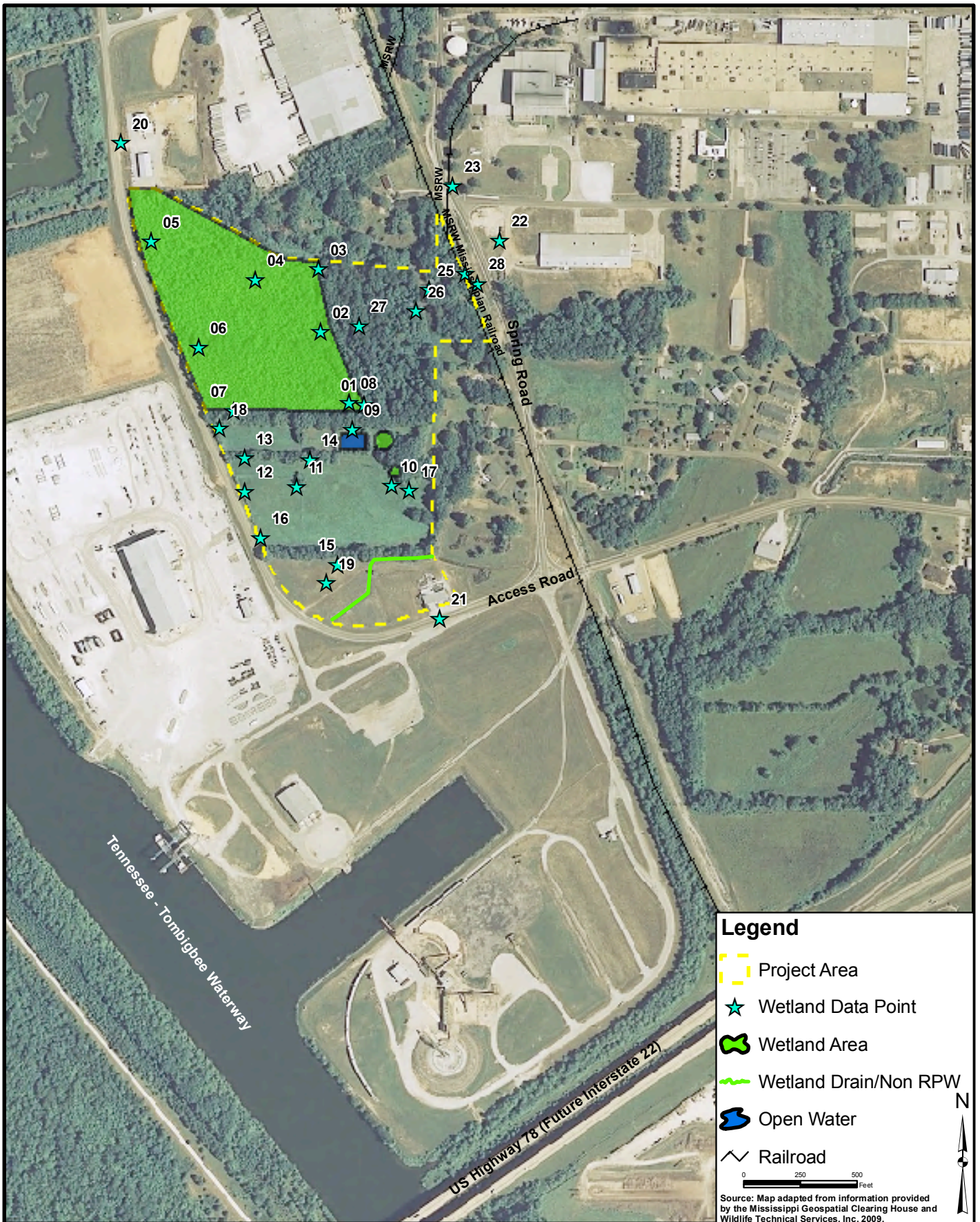
SEPT. 2009

**FIGURE 8  
FULTON PROJECT SITE FEMA FLOODPLAIN MAP**







BLUEFIRE ETHANOL FULTON  
MISSISSIPPI FACILITY  
FULTON, MISSISSIPPI

09180109.01





**Legend**

-  Project Area
-  Wetland Data Point
-  Wetland Area
-  Wetland Drain/Non RPW
-  Open Water
-  Railroad

0 250 500 Feet

Source: Map adapted from information provided by the Mississippi Geospatial Clearing House and Wildlife Technical Services, Inc. 2009.



Prepared By:

**AECOM**



Prepared For:

**FIGURE 9  
FULTON PROJECT SITE WETLAND LOCATION MAP**

BLUEFIRE ETHANOL FULTON  
MISSISSIPPI FACILITY  
FULTON, MISSISSIPPI

Sept. 2009

09180109.01