

**ATTACHMENT F-6**

***Preliminary Notice of Possible Impact on Important Resources***

**Sapphire Energy, Inc.  
Luna County, New Mexico**

The USDA, Rural Development is considering an application for loan guarantee pursuant to Section 9003 of the Food, Conservation, and Energy Act of 2008 received from **Sapphire Energy, Inc** 27101 Puerta Real, Suite 280, Mission Viejo, CA 92691 for constructing and operating an Integrated Algal Biorefinery (IABR) Project in Luna County, New Mexico. The facility would include the construction of a number of shallow ponds with a liner to be located southwest of Columbus, New Mexico in Sections 8 and 9, T29S, R8 and 9 West.

If implemented, the proposal may directly or indirectly affect approximately 400 acres important farmland, small areas of wetland and floodplains or cultural resources within the site. The purpose of this notice is to inform interested parties and the public, of possible impacts to important farmland, wetland, floodplains or cultural resources and to request comments concerning the proposal; any site or design alternatives; and, any methods that would avoid or minimize the impact to such important resources.

Information on the proposal is available for review at USDA, Rural Development, 1400 Independence Ave SW, Room 6858-S, Mail STOP 3225, Washington, DC, 20250. Contact Mr. Anthony Ashby, Loan Specialist at (202) 720-0661. Information is also available at the applicant's office at 9035 Advancement Avenue, Las Cruces, New Mexico 88007 Contact Mr. Jaime E. Moreno, Sapphire Energy, Inc at (575) 523-4777

Any person interested in commenting on the proposal should submit comments within 30 days following the date of this notice to Mr. Anthony Ashby, Loan Specialist, USDA, Rural Development, 1400 Independence Ave SW, Room 6858-S, Mail STOP 3225, Washington, DC, 20250.

**Bring In this ad and receive  
\$3 off Shipping & \$2 off Packaging**

• Fax Services • Mailbox Services • Packaging & Moving Supplies  
• Copying, Finishing & Printing Services • Office Supplies • Freight Services • Notary Services

**Solomon & Emily Padilla**  
Owners 526-9235  
M-F 7:30-6PM Sat 9-4PM

2521 N. Main St. #1  
Las Cruces, NM  
(Albertsons Shopping Center)

***Preliminary Notice of Possible Impact on Important Resources***

**Sapphire Energy, Inc.  
Luna County, New Mexico**

The USDA, Rural Development is considering an application for loan guarantee pursuant to Section 9003 of the Food, conservation, and Energy Act of 2008 received from Sapphire Energy, Inc 27101 Puerta Real, Suite 280, Mission Viejo, CA 92691 for constructing and operating an Integrated Algal Biorefinery (IABR) Project in Luna County, New Mexico. The facility would include the construction of a number of shallow ponds with a liner to be located southwest of Columbus, New Mexico in sections 8 and 9, T29S, R8 and 9 West.

If implemented, the proposal may directly or indirectly affect approximately 400 acres important farmland, small areas of wetland and floodplains or cultural resources within the site. The purpose of this notice is to inform interested parties and the public, of possible impacts to important farmland, wetland, floodplains or cultural resources and to request comments concerning the proposal; any site or design alternatives; and any methods that would avoid or minimize the impact to such important resources.

Information on the proposal is available for review at USDA, Rural Development, 1400 Independence Ave SW, Room 6858-S, Mail STOP 3225, Washington, DC, 20250. Contact Mr. Anthony Ashby, Loan Specialist at (202) 720-0661. Information is also available to the applicant's office at 9035 Advancement Avenue, Las Cruces, New Mexico 88007 Contact Mr. Jaime E. Moreno, Sapphire Energy, Inc at (575) 523-4777

Any person interested in commenting on the proposal should submit comments within 30 days following the date of this notice to Mr. Anthony Ashby, Loan Specialist, USDA, Rural Development, 1400 Independence Ave SW, Room 6858-S, Mail STOP 3225, Washington, DC, 20250.

**Homeowners, Property Managers**

# LAS CRUCES SUN-NEWS

## AFFIDAVIT OF INSERTION

This is to certify that an ad was inserted from **Saphire Energy** in the **8/19/2009** of the **Las Cruces Sun-News** in Las Cruces, New Mexico on page **2A**.



Bill Pitchkolan

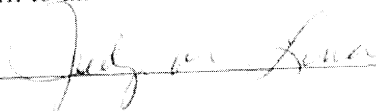
Advertising Director

8/27/09

Date

### NOTARY PUBLIC

Sworn to and subscribe before me this 27<sup>th</sup> day of August AD 2009.



Notary Public Signature

My commission expires March 24, 2011

Notary Seal



OFFICIAL SEAL  
JUDY M. LUNA  
NOTARY PUBLIC, STATE OF NEW MEXICO

My commission expires 3/24/2011

# LAS CRUCES SUN-NEWS

## AFFIDAVIT OF INSERTION

This is to certify that an ad was inserted from **Saphire Energy** in the **8/20/2009** of the **Las Cruces Sun-News** in Las Cruces, New Mexico on page **3A**.

*Bill Pitchkolan*

Bill Pitchkolan

Advertising Director

*8/27/09*

Date

### NOTARY PUBLIC

Sworn to and subscribe before me this 27<sup>th</sup> day of August AD 2009.

*Judy M. Luna*

Notary Public Signature

My commission expires March 29, 2011

Notary Seal



OFFICIAL SEAL  
JUDY M. LUNA  
NOTARY PUBLIC / STATE OF NEW MEXICO  
My commission expires 3/29/2011

# LAS CRUCES SUN-NEWS

## AFFIDAVIT OF INSERTION

This is to certify that an ad was inserted from **Saphire Energy** in the **8/21/2009** of the **Las Cruces Sun-News** in Las Cruces, New Mexico on page **2C**.



Bill Pitchkolan

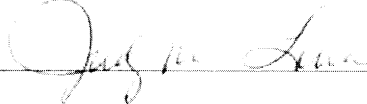
Advertising Director

8/27/09

Date

### NOTARY PUBLIC

Sworn to and subscribe before me this 27<sup>th</sup> day of August AD 2009.



Notary Public Signature

My commission expires March 29, 2011

Notary Seal



OFFICIAL SEAL  
JUDY M. LUNA  
NOTARY PUBLIC - STATE OF NEW MEXICO

My commission expires: 3/29/2011

# LAS CRUCES SUN-NEWS

## AFFIDAVIT OF INSERTION

This is to certify that an ad was inserted from **Saphire Energy** in the **8/19/2009**, **8/21/2009** of the **Deming Headlight** in Deming, New Mexico on page **2A**.



Bill Pitchkolan

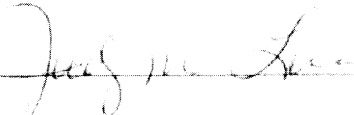
Advertising Director

8/27/09

Date

### NOTARY PUBLIC

Sworn to and subscribe before me this 21<sup>st</sup> day of August AD 2009.



Notary Public Signature

My commission expires March 24, 2011

Notary Seal



OFFICIAL SEAL  
JUDY M. LUNA  
NOTARY PUBLIC - STATE OF NEW MEXICO  
My commission expires: 3/24/2011

# LAS CRUCES SUN-NEWS

## AFFIDAVIT OF INSERTION

This is to certify that an ad was inserted from **Saphire Energy** in the **8/20/2009** of the **Deming Headlight** in Deming, New Mexico on page **5A**.



Bill Pitchkolan

Advertising Director

8/27/09

Date

### NOTARY PUBLIC

Sworn to and subscribe before me this 27<sup>th</sup> day of August AD 2009.



Notary Public Signature

My commission expires March 29, 2011

Notary Seal



OFFICIAL SEAL  
JUDY M. LUNA  
NOTARY PUBLIC - STATE OF NEW MEXICO

My commission expires: 3/29/2011







## PUBLIC NOTICE / NOTICIA PUBLICA

Discharge Permit / Application / Aplicación para Permiso para  
Discharge: For up to 170,000 gallons per day of agricultural  
wastewater from an algae production facility to a disposal system  
located on 70,000 gallons per day of agricultural wastewater  
production de residuos sin de aguas residuales agrícolas de una  
Sistema de Energía - NRI R&D Facility, 8035 Culamcenter Ave., Las  
Cruces.

### For More Information / Para Más Información:

Ground Water Quality Board - Comisión de Agua Subterránea

NM Dept. of Environment - Departamento del Medio Ambiente

(505) 827-2900, DP-1718 [www.nm.gov/dep/air/permits/public\\_notice/](http://www.nm.gov/dep/air/permits/public_notice/)

Advertisement in this publication is the responsibility of the applicant and will be removed by 7/20/10

**AFFIDAVIT OF PUBLIC NOTICE COMPLETION  
New Permit or Permit Modification**

**DP-1718**

I certify, under penalty of law, that I have fulfilled the Ground Water Discharge Permit public notice requirements of Section 20.6.2.3108(B) NMAC.

I posted a sign for 30 days displaying a synopsis of the public notice in English and in Spanish at or near the proposed facility in a conspicuous public location (or multiple locations) approved by NMED.

I posted a public notice flyer at a conspicuous off-site location approved by NMED.

I placed a synopsis of the public notice in English and in Spanish in a newspaper approved by NMED. A copy of the newspaper page containing the synopsis is enclosed.

I sent the public notice flyer via 1st class mail to *(check box)*:

- owners of all properties within a 1/3 mile of the boundary of the property of the proposed discharge locations – mailing list is enclosed.
- owners of all adjacent property (if applicant owns all property within 1/3 mile) – mailing list is enclosed.
- owner of the property of the proposed discharge locations (if applicant is not the owner) – mailing address is enclosed.

I am aware that there are significant penalties for false certification including the possibility of fines.



Signature of Applicant

NM OPERATIONS MANAGER

Title

BRYN DAVIS

Printed Name

17 August 2009

Date

PROPERTY OWNER/ADDRESS	PROPERTY ADDRESS	PARCEL #	MIR CODE	SUBDIVISION	DATE RECEIVED
LARRY BARKER PO BOX 611 MESILLA PARK, NM 88047	9030 ADVANCEMENT AVE 350 ALLIANCE DR	02-38977 02-40359	0213003138087303 0213003138082246	4690 - WEST MESA INDUSTRIAL PARK #26 REPLAT #1 4690 - WEST MESA INDUSTRIAL PARK #26 REPLAT #1	7/9/2009 7/9/2009
CITY OF LAS CRUCES PO BOX 20000 LAS CRUCES, NM 88004	9085 ADVANCEMENT AVE 380 REA BLVD 301 REA BLVD	02-40905 02-32853 02-34315 02-25752 02-38974 02-38978 02-38979 02-38980 02-38981 02-39088 02-39087 02-40354 02-40355 02-40356 02-40357 02-40907	0213003138381453 0213002138396184 0213003138261306 0213003138306108 0213002138489311 0213003138171263 0213003138175211 0213003138264200 0213003138260224 0213002138071272 0213002138433255 0213003138168110 0213003138077110 0213003138173153 0213003138075151 0213003138134441	4788 - WEST MESA INDUSTRIAL PARK #28 4122 - WEST MESA INDUSTRIAL PARK #5 & 12 REPLAT #1 4270 - WEST MESA INDUSTRIAL PARK #21 3079 - WEST MESA INDUSTRIAL PARK #7 AMENDED 4690 - WEST MESA INDUSTRIAL PARK #26 REPLAT #1 4690 - WEST MESA INDUSTRIAL PARK #26 REPLAT #1 4690 - WEST MESA INDUSTRIAL PARK #26 REPLAT #1 4690 - WEST MESA INDUSTRIAL PARK #26 REPLAT #1 4690 - WEST MESA INDUSTRIAL PARK #26 REPLAT #1 N/A 4627 - WEST MESA INDUSTRIAL PARK #27 N/A 4690 - WEST MESA INDUSTRIAL PARK #26 REPLAT #1 4690 - WEST MESA INDUSTRIAL PARK #26 REPLAT #1 4690 - WEST MESA INDUSTRIAL PARK #26 REPLAT #1 N/A	7/9/2009 7/9/2009 7/9/2009 7/9/2009 7/9/2009 7/9/2009 7/9/2009 7/9/2009 7/9/2009 7/9/2009 7/9/2009 7/9/2009 7/9/2009 7/9/2009 7/9/2009
TMG MANUFACTURING LLC C/O MARK MARVIN PO BOX 1259 FAIRACRES, NM 88033	505 VENTURE DR	02-30043	0213002138494398	3753 - WEST MESA INDUSTRIAL PARK #20	7/9/2009
CONTRACTORS LEASING LLC 2906 BROADWAY NE ALBUQUERQUE, NM 87107		02-38976	0213003138029312	4690 - WEST MESA INDUSTRIAL PARK #26 REPLAT #1	7/9/2009
FARMERS INVESTMENT CO 1525 E SAHUARITA SAHUARITA, AZ 85629	390 REA BLVD	02-27779	0213003138175312	3338 - WEST MESA INDUSTRIAL PARK #14	7/9/2009
PRO-BUILD REAL ESTATE HOLDINGS LLC 82 DEVONSHIRE R7A BOSTON, MA 92109		02-27922 02-25460 02-27777 02-27778	0213003138014269 0213002138500240 0213002138500200 0213003138008200	3395 - WEST MESA INDUSTRIAL PARK #18 2891 - WEST MESA INDUSTRIAL PARK #6 3337 - WEST MESA INDUSTRIAL PARK #13 3339 - WEST MESA INDUSTRIAL PARK #15	7/9/2009 7/9/2009 7/9/2009 7/9/2009
DENNIS & MARILYN MUNCRIF 5655 TRES SENDAS LAS CRUCES, NM 88005	370 REA BLVD	02-34842	0213003138261255	4366 - WEST MESA INDUSTRIAL PARK #23	7/9/2009
F & A DAIRY PRODUCTS INC 355 CRAWFORD BLVD LAS CRUCES, NM 88012		02-23941 02-27520	0213002138352150 0213002138370280	4122 - WEST MESA INDUSTRIAL PARK #5 & 12 REPLAT #1 3335 - WEST MESA INDUSTRIAL PARK PLAT #5 AMENDED	7/9/2009 7/9/2009

WASTE DISCHARGE PERMIT NOTICES

PROPERTY OWNER/ADDRESS	PROPERTY ADDRESS	PARCEL #	MAPCODE	SUBDIVISION	DATE LETTER SENT
DUCROSS INVESTMENTS LLC PO BOX 9825 ALBUQUERQUE, NM 87119		02-23689	02I3003138001125	2648 - WEST MESA INDUSTRIAL PARK SUBDIVISION PLAT #4	7/9/2009
DOAK RENTAL LLC 350 CRAWFORD BLVD LAS CRUCES, NM 88007		02-24507	02I3002138525153	2648 - WEST MESA INDUSTRIAL PARK SUBDIVISION PLAT #4	7/9/2009
DONALD R & M DIANNE DOAK 350 CRAWFORD BLVD LAS CRUCES, NM 88007		02-24508	02I3002138520182	2648 - WEST MESA INDUSTRIAL PARK SUBDIVISION PLAT #4	7/9/2009
STATE OF NEW MEXICO 310 OLD SANTA FE TRL SANTA FE, NM 87501		02-39559	02I3002139390263	4623 - CITY OF LC KENNON ANNEXATION DONA ANA COUNTY	7/9/2009
UNITED STATES OF AMERICA 1800 MARQUESS LAS CRUCES, NM 88005-3371		03-00532	0203003139264263	N/A	7/9/2009

# In the world

The Associated Press

## Clozapine may have saved schizophrenics

LONDON — Thousands of people with schizophrenia worldwide could have been saved if doctors had prescribed them the antipsychotic drug clozapine, a new study says.

Clozapine was introduced in the 1970s, but was banned for about a decade because of a rare but potentially deadly

By Gustavo Ruiz

Associated Press

MORELIA, Mexico — Federal agents Sunday captured two suspects in connection with a series of attacks on federal forces across western Michoacan state that left five officers and two soldiers dead.

The men were arrested following a shoot-out with federal police in the border port city of Lazaro Cardenas early Sunday in which one gunman was killed, Mexico's federal Public Safety Department said.

# Mexican police capture attack suspect

on federal police stations Saturday in Michoacan and two other states.

Authorities say the attacks — one of the boldest offenses carried out against the government — were in response to the arrest of Arnaldo Rueda Medina, a reputed main operative of La Familia cartel. Rueda was arrested shortly before 5 a.m. Saturday in the Michoacan capital, Morelia.

Assailants repeatedly ambushed federal forces throughout the day, opening fire on police patrols.

and two soldiers.

The violence continued Sunday with gunmen opening fire on a Lazaro Cardenas hotel frequented by federal agents, but no one was injured. In the mountain town of Nueva Italia, the bound bodies of three men who had been shot in the head were found, according to a report from the Michoacan state attorney general's office.

Rueda and the two suspects arrested Sunday will be taken to Mexico City.

has sent more than 45,000 tro drug hotspots in the state throughout Mexico since he took office in 2006. He also has arrested choacan politicians for all protecting cartels.

Cartels have responded with vengeance, killing soldiers en masse and carrying out attacks on rival smugglers. More than 1,000 people have been killed by drug cartels nationwide since 2006.

- Variety of interest payments available
  - Investment-grade rating by Standard & Poor's and/or Moody's
  - Callable and non-callable issues available
- 1-800-368-8274, ext. 2000  
 For more information, visit [www.edwardjones.com](http://www.edwardjones.com) or call 1-800-368-8274, ext. 2000. Investment services provided by Edward Jones Investment Services, a member of Edward Jones & Partners, L.P. (EJP), a limited liability partnership. EJP is a member of the Financial Industry Regulatory Authority (FINRA) and the National Futures Association (NFA). EJP is also a member of the National Securities Markets Commission (NSMC). EJP is not a member of the National Automated Clearing House Association (NACHA). EJP is not a member of the National Automated Clearing House Association (NACHA). EJP is not a member of the National Automated Clearing House Association (NACHA).

Call or visit your local financial advisor today.  
**Robin R Runyon**  
 Financial Advisor  
 2510 N. Peckinger Blvd. Suite A  
 Peoria, IL 61611  
 317.572.4274  
[www.edwardjones.com](http://www.edwardjones.com)


**Edward Jones**  
 MAKING SENSE OF INVESTING

**INTRODUCING ANTHEM™**  
 INTELLIFLEX™ TECHNOLOGY

**Anthem's industry leading features include:**

- **Best-in-class:**
  - **Whisper Free™ Feedback Cancellation**
  - **Environmental Noise Classification**
  - **Superior Speech Locator**
  - **Classifi EA (environmental adaptation)**
- **Industry's First:**
  - **Breakthrough technology that allows you to use your cell or touch-tone phone to adjust your Anthem hearing instrument.**

**Call today to set your appointment for a FREE hearing evaluation**  
 Mon. - Fri. 9am-5pm • [www.hearonearthmm.com](http://www.hearonearthmm.com)



**AUDIBEL**

**Created equal...**

The **ONE** and **only** **La-Z-Boy** recliner **ONLY AT** **DAW'S** Home Furnishings

**7714 Gateway East**  
 (Between Hunter & McEwen)  
**915-594-3030**

**PUBLIC NOTICE / NOTICIA PUBLICA**

**Discharge Permit Application / Aplicación para Permiso para Descarga:** For up to 170,000 gallons per day of agricultural wastewater from an algae production facility to a disposal system / De hasta 170,000 galones por día de aguas residuales agrícolas de una instalación de producción de algas a un sistema de disposición

**Applicant & Discharge Location / Solicitante & Sitio de Descarga:** Sapphire Energy - NV R&D Facility, 6015 Adm. Bldg. 1st Fl., Las Cruces

**For More Information / Para Más Información (DP-1718):** Ground Water Quality Bureau / Sección de Agua Subterránea, NM Environment Department / Departamento del Medio Ambiente (505) 827-2900 [www.nmenv.state.nm.us/public-notice/](http://www.nmenv.state.nm.us/public-notice/)

Information in this public notice was provided by the applicants and will be verified by NMED during the permit application review process.

# LAS CRUCES SUN-NEWS

## AFFIDAVIT OF INSERTION

This is to certify that an ad was inserted from **Sapphire Energy** in the 9/24/09, of the **Las Cruces Sun News** in Las Cruces, New Mexico on page 2A.

*Bill Pitchkolan*

Bill Pitchkolan

Advertising Director

*9/28/09*

Date

### NOTARY PUBLIC

Sworn to and subscribe before me this 28 day of September AD 2009.

*Adolph Mota*

Notary Public Signature

My commission expires September 15, 2013

Notary Seal



OFFICIAL SEAL  
ADOLPH MOTA  
NOTARY PUBLIC - STATE OF NEW MEXICO

My commission expires: 9-15-13



# ACORN, IRS cut ties

The Associated Press

The IRS said Wednesday it was severing ties with ACORN, joining a growing list of government agencies to end relationships with the community activist group.

The Internal Revenue Service said it would no longer include ACORN in its volunteer tax assistance program. The program offered free tax advice to about 3 million low- and moderate-income tax filers this spring. ACORN provided help on about 25,000 returns, the IRS said.

ACORN, meanwhile, said it had already suspended its tax program, raising questions about who broke up with whom.

"We had already made that decision to not deliver those services," ACORN chief executive Bertha Lewis said. ACORN officials provided reporters with a letter to the IRS, dated Monday, saying the group was suspending all tax services for 2009.

IRS spokesman Terry Lemons had a different take: "We announced last week we were conducting a thorough review and today we

terminated the relationship. We stand by our statement that we terminated the relationship."

ACORN, which is short for the Association of Community Organizations for Reform Now, has long been a target of conservative activists. A hidden-camera video surfaced earlier this month showing ACORN employees in Brooklyn, N.Y., advising a couple posing as a prostitute and pimp to lie to get housing aid. The video, produced by a conservative activist, shows employees in other cities counseling the pair on tax, banking and immigration issues.

"It is absolutely critical that taxpayers have trust in our Volunteer Income Tax Assistance program partners," the IRS said in a statement. "In light of recent events, the IRS has decided to terminate its relationship with ACORN."

Lewis said the group is working to clean up its problems. The group has selected Scott Harshbarger, a former Massachusetts attorney general, to investigate its housing program and other public service projects.

## Notification of the Finding of No Significant Impact (FONSI)

### For Sapphire Energy, Inc. Integrated Algal Biorefinery (IABR) Facility In Columbus, New Mexico

The US Department of Agriculture, Rural Development, Rural Business and Cooperative Service received a request from Sapphire Energy, Inc. for a loan guarantee in the amount of \$60 Million under the USDA Rural Business and Cooperative Service Section 9003, Biorefinery Assistance Program. The Lender is Square 1 Bank. The proposed loan guarantee request is for construction of a 3-year pilot-scale integrated algal biorefinery (IABR) facility to be located on 400-acres southwest of Columbus, New Mexico. The facility would include the construction of a number of shallow engineered ponds and related infrastructure.

As required by the National Environmental Policy Act and agency regulations, the USDA Rural Development has assessed the potential environmental effects of the proposal. Upon consideration of the applicant's proposal, comments from federal and state environmental regulatory and natural resource agencies, the agency has determined that the proposal will not have a significant adverse effect on the quality of human environment. Therefore, Rural Development will not prepare an Environmental Impact Statement for this project.

For copies of the Environmental Assessment or for further information, please contact: Mr. Anthony Ashby, Loan Specialist, USDA, Rural Development, 1400 Independence Avenue SW, Room 6858-S, Washington DC, 20250 (202) 720-0661. Any person interested in commenting on the proposal should submit their comments to the Agency contact at the address identified above. Comments must be received by Rural Development within 15 days following the date of publication. Rural Development will make no further decisions regarding this proposed action during this fifteen-day period.

The project area is located in Sections 8 and 9, T29S, R8 and 9 West, approximately 7 miles west of Columbus, New Mexico, approximately one-half mile north of the US/Mexico border.

# ADVANCE TICKETS

at all

# LAS CRUCES SUN-NEWS

## AFFIDAVIT OF INSERTION

This is to certify that an ad was inserted from **Sapphire Energy** in the **9/25/09**, of the **Las Cruces Sun News** in Las Cruces, New Mexico on page **7C**.



Bill Pitchkolan

Advertising Director

9/25/09

Date

## NOTARY PUBLIC

Sworn to and subscribe before me this 28 day of September AD 2009.



Notary Public Signature

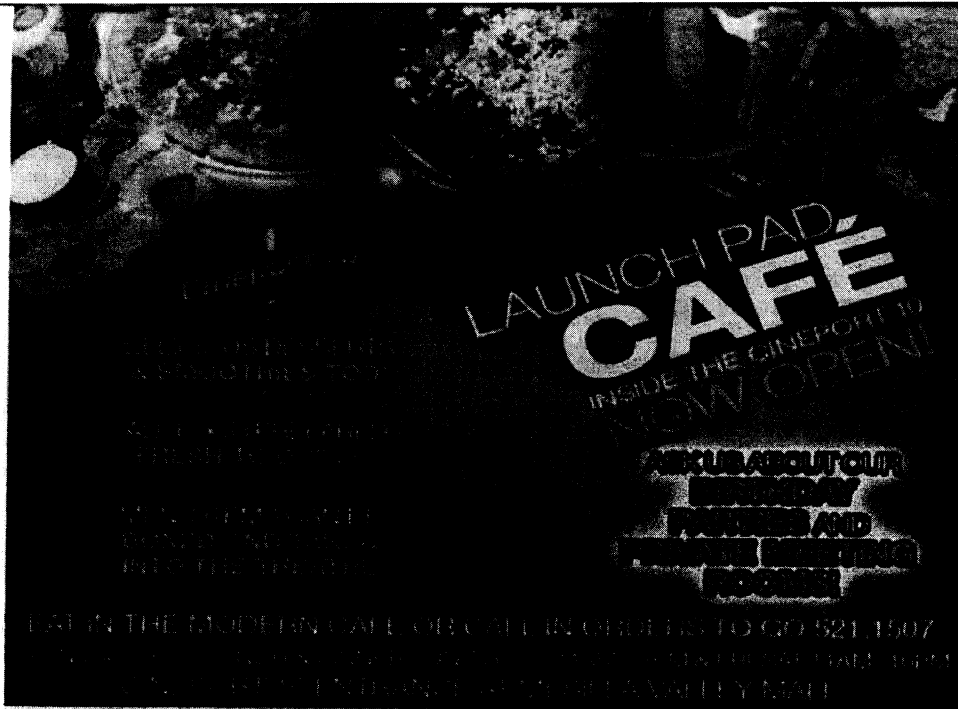
My commission expires September 15, 2013

Notary Seal



OFFICIAL SEAL  
ADOLPH MOTA  
NOTARY PUBLIC - STATE OF NEW MEXICO

My commission expires: 9-15-13



**Notification of the Finding of No Significant Impact (FONSI)  
For Sapphire Energy, Inc.  
Integrated Algal Biorefinery (IABR) Facility  
In Columbus, New Mexico**

The US Department of Agriculture, Rural Development, Rural Business and Cooperative Service received a request from Sapphire Energy, Inc. for a loan guarantee in the amount of \$60 Million under the USDA Rural Business and Cooperative Service Section 9003, Biorefinery Assistance Program. The Lender is Square 1 Bank. The proposed loan guarantee request is for construction of a 3-year pilot-scale integrated algal biorefinery (IABR) facility to be located on 400-acres southwest of Columbus, New Mexico. The facility would include the construction of a number of shallow engineered ponds and related infrastructure.

As required by the National Environmental Policy Act and agency regulations, the USDA Rural Development has assessed the potential environmental effects of the proposal. Upon consideration of the applicant's proposal, comments from federal and state environmental regulatory and natural resource agencies, the agency has determined that the proposal will not have a significant adverse effect on the quality of human environment. Therefore, Rural Development will not prepare an Environmental Impact Statement for this project.

For copies of the Environmental Assessment or for further information, please contact: Mr. Anthony Ashby, Loan Specialist, USDA, Rural Development, 1400 Independence Avenue SW, Room 6858-S, Washington DC, 20250 (202) 720-0661. Any person interested in commenting on the proposal should submit their comments to the Agency contact at the address identified above. Comments must be received by Rural Development within 15 days following the date of publication. Rural Development will make no further decisions regarding this proposed action during this fifteen-day period.

The project area is located in Sections 8 and 9, T29S, R8 and 9 West, approximately 7 miles west of Columbus, New Mexico, approximately one-half mile north of the US/Mexico border.

# LAS CRUCES SUN-NEWS

## AFFIDAVIT OF INSERTION

This is to certify that an ad was inserted from **Sapphire Energy** in the **9/24/09**, of the **Deming Headlight** in Deming, New Mexico on page **6A**.

*Bill Pitchkolan*

Bill Pitchkolan

Advertising Director

*9/28/09*

Date

### NOTARY PUBLIC

Sworn to and subscribe before me this *28* day of *September* AD *2009*.

Notary Public Signature *Adolph Mota*  
My commission expires *September 15, 2013*

Notary Seal



OFFICIAL SEAL  
ADOLPH MOTA  
NOTARY PUBLIC - STATE OF NEW MEXICO

My commission expires: *9-15-2013*

**ST. LUKES**  
419 W. Spruce  
546-8088  
EPISCOPAL CHURCH

**First United Methodist Church**  
1020 S. Granite,  
corner of Granite & Buck-  
eye, 575-546-2791  
Sunday Worship: 8:00 & 10:30 am  
(Nursery Available)

Saturday evening worship  
- 6 p.m.  
Precious Jewels Bible Club  
Tuesdays - 3 to 5 p.m.  
Bible Study  
Wednesdays - 6 p.m.  
Ladies Council - 1:30 p.m.  
on 2nd & 4th Thursdays  
A Friendly Bible Church  
Information 575-546-3377  
Dartell L. Witmer, minister

**Sunday**  
6 p.m. Service  
104 S. Gold (Living  
Word Family Church)  
Nursery/attendee provided  
**Wednesday**  
Evening Bible Study  
7 p.m.

6A DEMING HEADLIGHT • THURSDAY, SEPT. 24, 2009

**County:**

Office on Cody Road.

**Notification of the Finding of No Significant Impact (FONSI)**  
**For Sapphire Energy, Inc.**  
**Integrated Algal Biorefinery (IABR) Facility**  
**In Columbus, New Mexico**

The US Department of Agriculture, Rural Development, Rural Business and Cooperative Service received a request from Sapphire Energy, Inc. for a loan guarantee in the amount of \$60 Million under the USDA Rural Business and Cooperative Service Section 9003, Biorefinery Assistance Program. The Lender is Square 1 Bank. The proposed loan guarantee request is for construction of a 3-year pilot-scale integrated algal biorefinery (IABR) facility to be located on 400-acres southwest of Columbus, New Mexico. The facility would include the construction of a number of shallow engineered ponds and related infrastructure.

As required by the National Environmental Policy Act and agency regulations, the USDA Rural Development has assessed the potential environmental effects of the proposal. Upon consideration of the applicant's proposal, comments from federal and state environmental regulatory and natural resource agencies, the agency has determined that the proposal will not have a significant adverse effect on the quality of human environment. Therefore, Rural Development will not prepare an Environmental Impact Statement for this project.

For copies of the Environmental Assessment or for further information, please contact: Mr. Anthony Ashby, Loan Specialist, USDA, Rural Development, 1400 Independence Avenue SW, Room 6858-S, Washington DC, 20250 (202) 720-0661. Any person interested in commenting on the proposal should submit their comments to the Agency contact at the address identified above. Comments must be received by Rural Development within 15 days following the date of publication. Rural Development will make no further decisions regarding this proposed action during this fifteen-day period.

The project area is located in Sections 8 and 9, T29S, R8 and 9 West, approximately 7 miles west of Columbus, New Mexico, approximately one-half mile north of the US/Mexico border.

# LAS CRUCES SUN-NEWS

## AFFIDAVIT OF INSERTION

This is to certify that an ad was inserted from **Sapphire Energy** in the **9/25/09**, of the **Deming Headlight** in Deming, New Mexico on page **5A**.

*[Signature]*

Bill Pitchkolan

Advertising Director

9/28/09

Date

### NOTARY PUBLIC

Sworn to and subscribe before me this 28 day of September AD 2009.

*[Signature]*

Notary Public Signature

My commission expires September 15, 2013

Notary Seal



OFFICIAL SEAL  
ADOLPH MOTA  
NOTARY PUBLIC - STATE OF NEW MEXICO

My commission expires: 9.15.2013

# Grad fair opens opportunities

FOR THE HEADLIGHT

**LAS CRUCES** — New Mexico State University Career Services will hold the 2009 Graduate and Professional School Fair to give all students, regardless of their major or year in school, the chance to meet with admissions representatives from various graduate and professional school programs.

The fair will be from 10 a.m. to 2 p.m. Tuesday on the first and second floor of Corbett Center Student Union.

The schools participating, which are law schools, dental schools, medical schools, general schools and more, will be from all over the country, will in-

clude Creighton University, Ohio State University, Texas Tech University and the University of Michigan. More than 55 schools are registered for the fair.

Students are encouraged to prepare for the Graduate and Professional School Fair by knowing what kind of school they are interested in and bringing any documentation, such as research, portfolios, manuscripts, etc., to show what they have to offer to a university. Students should also prepare questions they wish to ask the school, such as requirements for the school and what graduate assistant positions are available.

Students of all years, even freshmen, are invited

to attend the event, as it's never too early to begin preparing, said Lizeth Vazquez, a career advisor at NMSU Career Services.

Career Services offers help for students in writing their personal statement of interest, a requirement from graduate schools in the application process. There is also a library resource center at the Career Services offices where students can use resources to prepare and research schools. The office is located at Garcia Annex in Room 224.

For more information, contact NMSU Career Services at (575) 646-1631 or [gradfair@nmsu.edu](mailto:gradfair@nmsu.edu), or visit the Web site [career.services.nmsu.edu](http://career.services.nmsu.edu).

## Notification of the Finding of No Significant Impact (FONSI)

For Sapphire Energy, Inc.

Integrated Algal Biorefinery (IABR) Facility

In Columbus, New Mexico

The US Department of Agriculture, Rural Development, Rural Business and Cooperative Service received a request from Sapphire Energy, Inc. for a loan guarantee in the amount of \$60 Million under the USDA Rural Business and Cooperative Service Section 9003, Biorefinery Assistance Program. The Lender is Square 1 Bank. The proposed loan guarantee request is for construction of a 3-year pilot-scale integrated algal biorefinery (IABR) facility to be located on 400-acres southwest of Columbus, New Mexico. The facility would include the construction of a number of shallow engineered ponds and related infrastructure.

As required by the National Environmental Policy Act and agency regulations, the USDA Rural Development has assessed the potential environmental effects of the proposal. Upon consideration of the applicant's proposal, comments from federal and state environmental regulatory and natural resource agencies, the agency has determined that the proposal will not have a significant adverse effect on the quality of human environment. Therefore, Rural Development will not prepare an Environmental Impact Statement for this project.

For copies of the Environmental Assessment or for further information, please contact: Mr. Anthony Ashby, Loan Specialist, USDA, Rural Development, 1400 Independence Avenue SW, Room 6858-S, Washington DC, 20250 (202) 720-0661. Any person interested in commenting on the proposal should submit their comments to the Agency contact at the address identified above. Comments must be received by Rural Development within 15 days following the date of publication. Rural Development will make no further decisions regarding this proposed action during this fifteen-day period.

The project area is located in Sections 8 and 9, T29S, R3 and 9 West, approximately 7 miles west of Columbus, New Mexico, approximately one-half mile north of the US/Mexico border.

# LAS CRUCES SUN-NEWS

## AFFIDAVIT OF INSERTION

This is to certify that an ad was inserted from **Sapphire Energy** in the **9/28/09**, of the **Deming Headlight** in Deming, New Mexico on page **3A**.

*Bill Pitchkolan*

Bill Pitchkolan

Advertising Director

*9/28/09*

Date

### NOTARY PUBLIC

Sworn to and subscribe before me this 28 day of September AD 2009.

*Adolph Mota*

Notary Public Signature

My commission expires September 15, 2013

Notary Seal



OFFICIAL SEAL  
ADOLPH MOTA  
NOTARY PUBLIC - STATE OF NEW MEXICO

My commission expires: 9-15-13



many times that America is not there are people in this world and right here in the United States they are trying to kill Americans. This week has proven me right if you want to see the proof, all you have to do is look at what has happened in Colorado, New York, Illinois and now in Texas. It is by the grace of God, the FBI, local law enforcement and CIA that these attacks have been quashed in time to save lives. The guy down in Texas was an illegal alien, how did that happen? Then have hometown terrorists who accepted the doctrine of these outside terrorists who drove those planes into the World Trade Center and the one that crashed in Pennsylvania in 2001. This is outrageous. How in the world did American hometown citizens become so brainwashed as to commit these acts of terrorism on their own people?

**No trust in health reform**  
 Remember this song: "It's impossible," sung by Perry Come? If Perry was alive today, he could apply that title to the health insurance pandemic of knowledge that is gripping every individual who still possesses all of his faculties, which, as we listen to the media's brain-washing techniques, and a President who is overly educated in untried methods of doing something about anything. Knowledge per se does not solve any problem until it is wisely used. The subject of health care for every citizen of our country is in a state of being unsolvable from its inception relative to the theory of the free enterprise system of the medical profession. Having people of their resource, it is estimated that well over three million ways are employed by the most unsupervised system the world has ever been made subject to. Every person involved in the present system of overseeing the health of a person, and making every effort to make the person well, is involved in a system that is designed to receive unregulated amounts of money for their services. Case in point: My wife got the common flu. Our local hospital didn't know how to treat it, so they sent

ther

Accessweather.com

**Notification of the Finding of No Significant Impact (FONSI)  
 For Sapphire Energy, Inc.  
 Integrated Algal Biorefinery (IABR) Facility  
 In Columbus, New Mexico**

The US Department of Agriculture, Rural Development, Rural Business and Cooperative Service received a request from Sapphire Energy, Inc. for a loan guarantee in the amount of \$60 Million under the USDA Rural Business and Cooperative Service Section 9003, Biorefinery Assistance Program. The Lender is Square 1 Bank. The proposed loan guarantee request is for construction of a 3-year pilot-scale integrated algal biorefinery (IABR) facility to be located on 400-acres southwest of Columbus, New Mexico. The facility would include the construction of a number of shallow engineered ponds and related infrastructure.

As required by the National Environmental Policy Act and agency regulations, the USDA Rural Development has assessed the potential environmental effects of the proposal. Upon consideration of the applicant's proposal, comments from federal and state environmental regulatory and natural resource agencies, the agency has determined that the proposal will not have a significant adverse effect on the quality of human environment. Therefore, Rural Development will not prepare an Environmental Impact Statement for this project.

For copies of the Environmental Assessment or for further information, please contact: Mr. Anthony Ashby, Loan Specialist, USDA, Rural Development, 1400 Independence Avenue SW, Room 6858-S, Washington DC, 20250 (202) 720-0661. Any person interested in commenting on the proposal should submit their comments to the Agency contact at the address identified above. Comments must be received by Rural Development within 15 days following the date of publication. Rural Development will make no further decisions regarding this proposed action during this fifteen-day period.

The project area is located in Sections 8 and 9, T29S, R8 and 9 West, approximately 7 miles west of Columbus, New Mexico, approximately one-half mile north of the US/Mexico border.

**Environmental Assessment Contact Information including Individual Land Owners Notified of FONSI (mailed 9/22/09)**

Updated 9/30/09

Agency/tribe	To Whom	Street or PO	Letter / Project Description / Map Provided	Comments Received	Other Items Provided	Contact by Phone	Contact by Email	Contact by Meeting	Comments
Energy, Minerals, Forestry and Resources Conservation Division	State Forester Butch Blazer 505.476.3200 <a href="mailto:arthur.blazer@state.nm.us">arthur.blazer@state.nm.us</a>	P.O. Box 1948, Santa Fe, NM 87504	3/10/2009			7/22/2009			
Governor of the Pueblo of Nambe	Lela Kaskalla 505.455.2036	Route 1, Box 117-BB Santa Fe, NM 87501	3/10/2009						
Governor of the Pueblo of Zuni	Donald Eriacho 505.282.7000	P.O. Box 339 Zuni, New Mexico 87327	3/10/2009						
National Park Service	Regional Director 505.988.6888	P.O. Box 728 Santa Fe, New Mexico 87504	3/10/2009						
New Mexico Department of Game and Fish	Director 505.476.8000	P.O. Box 25112, Santa Fe, New Mexico 87504	3/10/2009			6/5/2009			
New Mexico Environment Department	Air Quality Bureau  Ted Schooley 505.827.1494 505.827.2855 505.476.4334 <a href="mailto:ted.schooley@state.nm.us">ted.schooley@state.nm.us</a>	P.O. Box 26110, Santa Fe, NM 26110	3/10/2009			7/22/2009		Yes	
New Mexico Environment Department	Water and Waste Management Division  George Schuman Or Marcy Leavitt 505.476.3728 <a href="mailto:marcy.leavitt@state.nm.us">marcy.leavitt@state.nm.us</a>	P.O. Box 26110, Santa Fe, NM 26110	3/10/2009					4/16/2009	

**Environmental Assessment Contact Information including Individual Land Owners Notified of FONSI (mailed 9/22/09)**

Updated 9/30/09

Agency/tribe	To Whom	Street or PO	Letter / Project Description / Map Provided	Comments Received	Other Items Provided	Contact by Phone	Contact by Email	Contact by Meeting	Comments
New Mexico State Highway and Transportation Department	District Engineer, NMSHTP Frank Guzman, PE 575.544.6621	2912 E. Pine Street Derming, NM 88030	3/10/2009						
Office of the State Engineer	State Engineer John D'Antonio, PE 505.827.6091	Bataan Memorial Building, Room 101, P.O. Box 25102, Santa Fe, NM 87504-5102	3/10/2009					Yes	
State Historic Preservation Officer	Michelle Ensey Archaeologist 505.827.4064 <a href="mailto:michelle.ensey@state.nm.us">michelle.ensey@state.nm.us</a> Or Katherine Slick 505.827.4044 <a href="mailto:katherine.slick@state.nm.us">katherine.slick@state.nm.us</a>	Bataan Memorial Building, 407 Galisteo Street, Suite 236, Santa Fe, NM 87501	3/10/2009	5/7/2009 8/13/2009			Michelle Ensey		
U.S. Army Corps of Engineers	Construction Operations Division, Regulatory Office Kelly Allen 505.342.3216 <a href="mailto:Kelly.e.allen@usace.army.mil">Kelly.e.allen@usace.army.mil</a> Richard Gatewood 505.554.7943	4101 Jefferson Plaza, NE, Albuquerque, NM 87109-3435	3/10/2009	6/24/2009 6/25/2009		6/24/2009 7/22/2009	6/24/2009 6/25/2009		JD to be completed El Paso office has jurisdiction Richard Gatewood 505.554.7943
U.S. Bureau of Land Management	Las Cruces District Office Lori Allen	1800 Marquess Street Las Cruces, New Mexico 88005-3371			Notification of Land Access 5/30/2009				

**Environmental Assessment Contact Information including Individual Land Owners Notified of FONSI (mailed 9/22/09)**

Updated 9/30/09

Agency/tribe	To Whom	Street or PO	Letter / Project Description / Map Provided	Comments Received	Other Items Provided	Contact by Phone	Contact by Email	Contact by Meeting	Comments
U.S. Environmental Protection Agency	Director 800.887.6063	1445 Ross Avenue, Suite 1200, Dallas, Texas 75202-2733	3/10/2009						
U.S. Department of Agriculture	Rural Development - Business and Cooperative Programs  Mike McDow 505.761.4400 <a href="mailto:Mike.McDow@usda.gov">Mike.McDow@usda.gov</a>  Ann Swanberg-Mee, PE 505.761.4972 <a href="mailto:Ann.Swanberg-Mee@nm.usda.gov">Ann.Swanberg-Mee@nm.usda.gov</a>	6200 Jefferson NE, Room 255 Albuquerque, NM 87109	3/10/2009		Form 1940-20 Signed 09 March 2009.pdf  Cultural Report Provided 7/24/2009  Phase I Assessment Provided 7/28/2009  Site Form Dept of Cultural Affairs to George Scott 8/14/2009	2/9/2009 3/23/2009 7/14/2009 7/24/2009			
U.S. Department of Agriculture	Farm Service Agency 575.546.9692	405 E. Florida St, Deming, NM 88030-5235							To be Contacted by NRCS Louis Garcia
U.S. Department of Agriculture	Natural Resource Conservation Service  Luis Garcia 575.546.9692 <a href="mailto:Luis.Garcia@nrm.usda.gov">Luis.Garcia@nrm.usda.gov</a>	405 E Florida Street Deming, NM 88030-5235	3/10/2009	7/24/2009	Form AD-1006 8/14/2009	VM - 7/23/2009	7/24/2009		
U.S. Fish & Wildlife Service	Field Supervisor Eric Hine Wally Murphy 505.248.6911	2105 Osuna Rd NE, Albuquerque, New Mexico 87113-1001	3/10/2009			5/5/2009 7/24/2009	5/7/2009		Falcon Survey Permit

Kirk Zacheck, et ux	P.O. Box 241 Columbus, NM 88029	Land Owner	Notice of FONSI mailed 9/22/09	
Nick W. Sayah	Best Tours & Travel 2609 E. McKinley Fresno, CA 93703	Land Owner	Notice of FONSI mailed 9/22/09	
Rolando A. Ruiz	P.O. Box 1355 Loving, NM 88256	Land Owner	Notice of FONSI mailed 9/22/09	
Robert R. Cook et al	P.O. Box 1343 Columbus, NM 88029	Land Owner	Notice of FONSI mailed 9/22/09	
Lisa M. Davis et vir	8921 Vidal Rd. SW Albuquerque, NM 87109	Land Owner	Notice of FONSI mailed 9/22/09	
Jerry F. Zacheck, et ux Trustees	P.O. Box 509 Columbus, NM 88029	Land Owner	Notice of FONSI mailed 9/22/09	
Rancho La Frontera A Partnership	P.O. Box 509 Columbus, NM 88029	Land Owner	Notice of FONSI mailed 9/22/09	



**United States Department of Agriculture  
Rural Development**

**Subject:** Finding of No Significant Environmental Impact and Necessary Environmental Findings for the Sapphire Energy, Inc.'s Integrated Algal Biorefinery (IABR) Facility in Columbus, New Mexico

**To:** Project File

The attached environmental assessment for the subject proposal has been prepared and reviewed by the appropriate Rural Development officials. After reviewing the assessment and the supporting materials attached to it, I find that the subject proposal will not significantly affect the quality of the human environment. Therefore, the preparation of an environmental impact statement is not necessary.

Mitigative measures which will be employed for this project include the following:

- 1) The USFWS recommends that in order to minimize the likelihood of adverse impacts to all birds protected under the Migratory Bird Treaty Act (MBTA), construction activities should occur outside the general migratory bird nesting season of March through August, or that areas proposed for construction during nesting season be surveyed, and when occupied, avoided until nesting is completed.
- 2) The applicant should coordinate with the USFWS and NMDGF in order to minimize potential impacts to any burrowing owls located on the site if present as outlined in the "Guidelines and Recommendations for Burrowing Owl Surveys and Mitigation" (July 2007). "
- 3) The approval of this project is conditional upon receipt of the USACE Jurisdictional Determination confirming that there are no jurisdictional wetlands or waterways located on the property.
- 4) The approval of this project is conditional upon receipt of all other required permits and approvals (air quality, water rights, NPDES, Discharge) as stated in the EA.

I also find that the assessment properly documents the proposal's status of compliance with the environmental laws and requirements listed therein.

JUDITH A. CANALES  
Administrator  
Rural Business and Cooperative Service

9/21/09

Date

1400 Independence Ave, S.W. · Washington DC 20250-0700  
Web: <http://www.rurdev.usda.gov>

Committed to the future of rural communities.

"USDA is an equal opportunity provider, employer and lender."  
To file a complaint of discrimination, write USDA, Director, Office of Civil Rights,  
1400 Independence Avenue, S.W., Washington, DC 20250-9410 or call (800) 795-3272 (Voice) or (202) 720-6382 (TDD).

DEPARTMENT OF HOMELAND SECURITY  
 FEDERAL EMERGENCY MANAGEMENT AGENCY  
**STANDARD FLOOD HAZARD DETERMINATION FORM (SFHDF)**

See The Attached  
 Instructions

O.M.B. No. 1660-0040  
 Expires December 31, 2011

**SECTION I - LOAN INFORMATION**

1. LENDER NAME AND ADDRESS USDA Rural Development 1400 Independence Avenue, SW Mail Stop 0761 Washington, DC 20250		2. COLLATERAL (Building/Mobile Home/Personal Property) PROPERTY ADDRESS (Legal Description may be attached)  Integrated Algal Bio-Refinery Facility 400 acres of land located 2 miles southwest of Columbus, New Mexico at Sections 8 and 9, Township 29 South, Range 8 and 9 West as depicted on the attached graphic	
3. LENDER ID NO. Business Programs	4. LOAN IDENTIFIER	5. AMOUNT OF FLOOD INSURANCE REQUIRED \$	

**SECTION II**

**A. NATIONAL FLOOD INSURANCE PROGRAM (NFIP) COMMUNITY JURISDICTION**

1. NFIP Community Name Village of Columbus	2. County(ies) Luna	3. State NM	4. NFIP Community Number 350037
---	------------------------	----------------	------------------------------------

**B. NATIONAL FLOOD INSURANCE PROGRAM (NFIP) DATA AFFECTING BUILDING/MOBILE HOME**

1. NFIP Map Number or Community-Panel Number (Community name, if not the same as "A")  350037 0800	2. NFIP Map Panel Effective/ Revised Date  09/14/90	3. LOMA/LOMR  <input type="checkbox"/> YES _____ Date	4. Flood Zone  X	5. No NFIP Map
---	--	---	------------------------	----------------

**C. FEDERAL FLOOD INSURANCE AVAILABILITY (Check all that apply)**

1.  Federal Flood Insurance is available (Community participates in NFIP).  Regular Program  Emergency Program of NFIP
2.  Federal Flood Insurance is not available because community is not participating in the NFIP.
3.  Building/Mobile Home is in a Coastal Barrier Resources Area (CBRA) or Otherwise Protected Area (OPA). Federal Flood Insurance may not be available.  
 CBRA/OPA Designation Date: \_\_\_\_\_

**D. DETERMINATION**

**IS BUILDING/MOBILE HOME IN SPECIAL FLOOD HAZARD AREA  
 (ZONES CONTAINING THE LETTERS "A" OR "V")?**  YES  NO

If yes, flood insurance is required by the Flood Disaster Protection Act of 1973.  
 If no, flood insurance is not required by the Flood Disaster Protection Act of 1973.

**E. COMMENTS (Optional)**

This flood determination is provided to the lender pursuant to the flood Disaster Protection Act. It should not be used for any other purpose.

This determination is based on examining the NFIP map, any Federal Emergency Management Agency revisions to it, and any other information needed to locate the building/mobile home on the NFIP map.

**F. PREPARER'S INFORMATION**

NAME, ADDRESS, TELEPHONE NUMBER (If other than Lender) Juliet C. Bochicchio, Environmental Protection Specialist USDA Rural Development 1400 Independence Avenue, SW Mail Stop 0761 Phone (202) 205-8242	DATE OF DETERMINATION  September 21, 2009 <i>September 21, 2009</i>
--	--

## F. Environmental Assessment

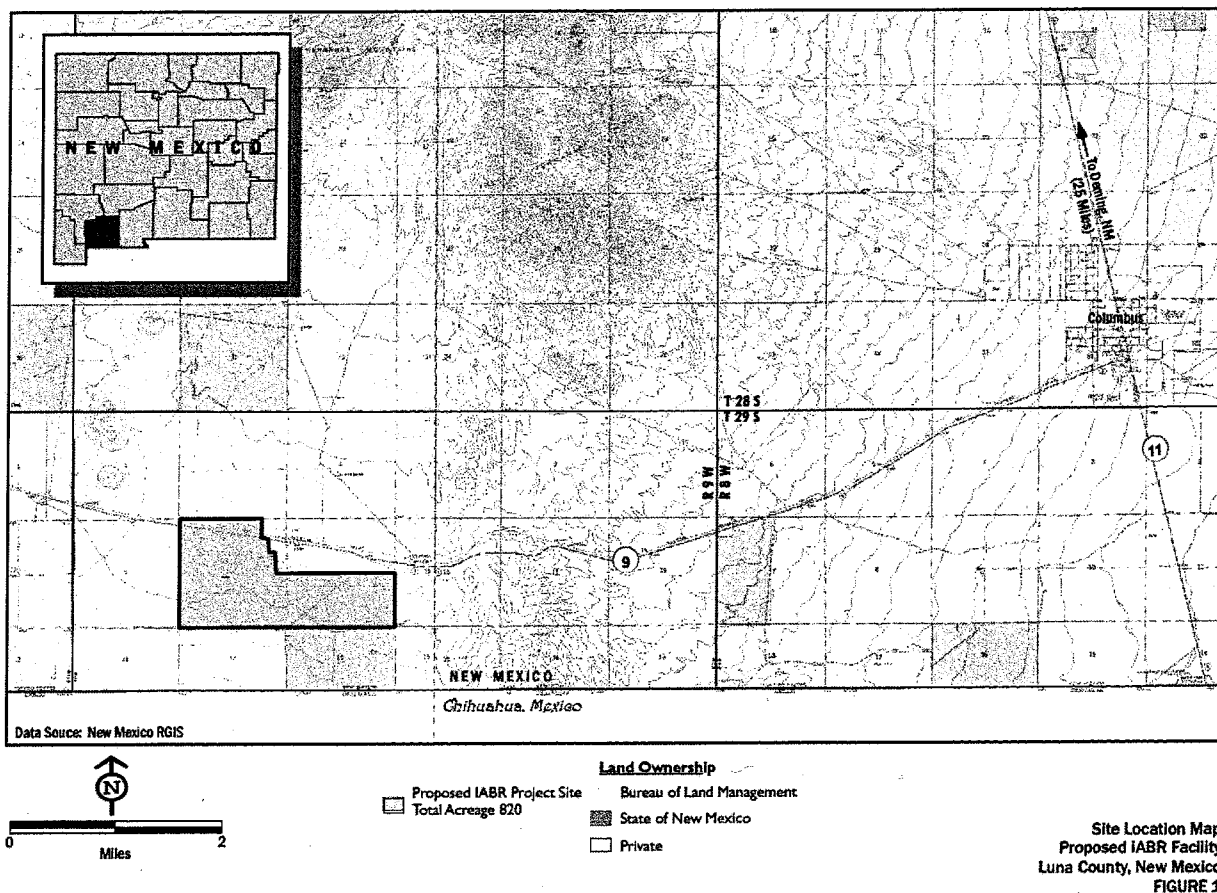
This section of the loan application describes the proposed Integrated Algal Biorefinery (IABR) project, the existing environment, and potential impacts to the environment related to the construction of the facility. In accordance with USDA guidance, this environmental evaluation was prepared pursuant to 7 CFR, Part 1940, Subpart G, Exhibit H.

### F.1. Project Description and Need

#### F.1.1. General Project Description and Purpose

The applicant, Sapphire Energy Company (Sapphire), proposes to construct and operate an Integrated Algal Bio-Refinery Facility (IABR) to produce oil from algae, ultimately refining the oil into various types of transportation fuel. Sapphire is proposing to construct the IABR southwest of the community of Columbus in Luna County, New Mexico (Figure 1 and 2 and Exhibits 1 and 2, Oversized).

Figure 1: Map of IABR Project Site and Surrounding Area





Rural Development  
Environmental Justice (EJ) and Civil Rights Impact Analysis (CRIA)  
Certification

1. Applicant's name and proposed project description: Sapphire Energy Company - Construct and operate an Integrated Algal Bio-refinery Facility to produce oil from alga.

2. Rural Development's loan/grant program/guarantee or other Agency action: Section 9003, Biorefinery Assistance Loan Guarantee

3.  Attach a map of the proposal's area of effect identifying location or EJ populations, location of the proposal, area of impact or

Attach results of EJ analysis from the Environmental Protection Agency's (EPAs) EnviroMapper with proposed project location and impact footprint delineated.

4. Does the applicant's proposal or Agency action directly, indirectly or cumulatively affect the quality and/or level of services provided to the community?

Yes  No  N/A

5. Is the applicant's proposal or Agency action likely to result in a change in the current land use patterns (types of land use, development densities, etc)?

Yes  No  N/A

6. Does a demographic analysis indicate the applicant's proposal or Agency's action may disproportionately affect a significant minority and/or low-income populations?

Yes  No  N/A

If answer is no, skip to item 12. If answer is yes, continue with items 7 through 12.

7. Identify, describe, and provide location of EJ population Size of Hispanic/Latino populations in adjacent Luna, Dona Ana and Hidalgo counties would be considered EJ populations.

8. If a disproportionate adverse affect is expected to impact an EJ population, identify type/level of public outreach implemented. No disproportionate adverse affect is anticipated. The project will positively impact through development of high-salary jobs and associated growth.

9. Identify disproportionately high and adverse impacts on EJ populations. None.

10. Are adverse impacts appreciably more severe or greater in magnitude than the adverse impacts expected on non-minority/low-income populations?

Yes  No  N/A

11. Are alternatives and/or mitigation required to avoid impacts to EJ populations?

Yes  No  N/A

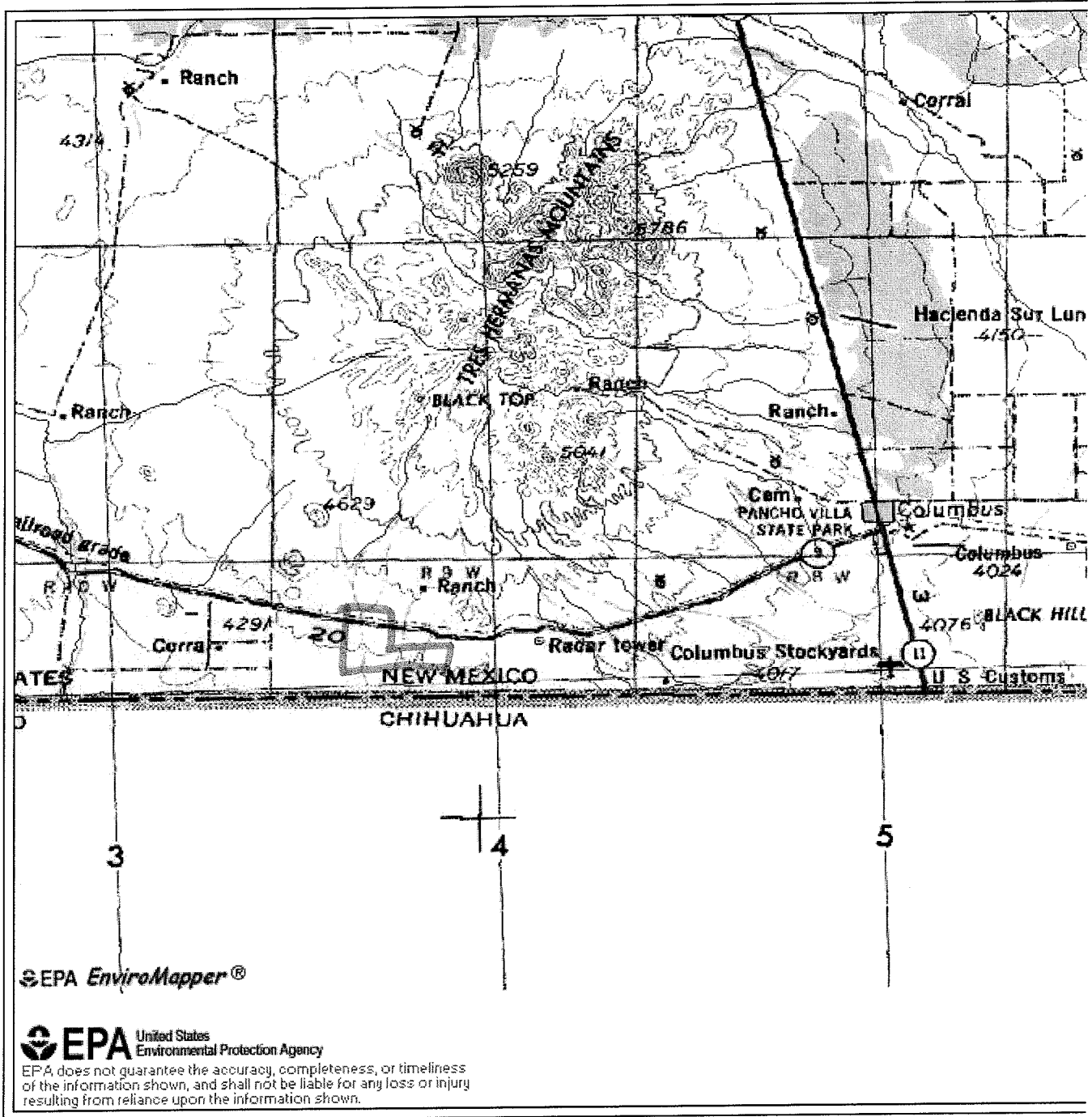
If yes, describe \_\_\_\_\_

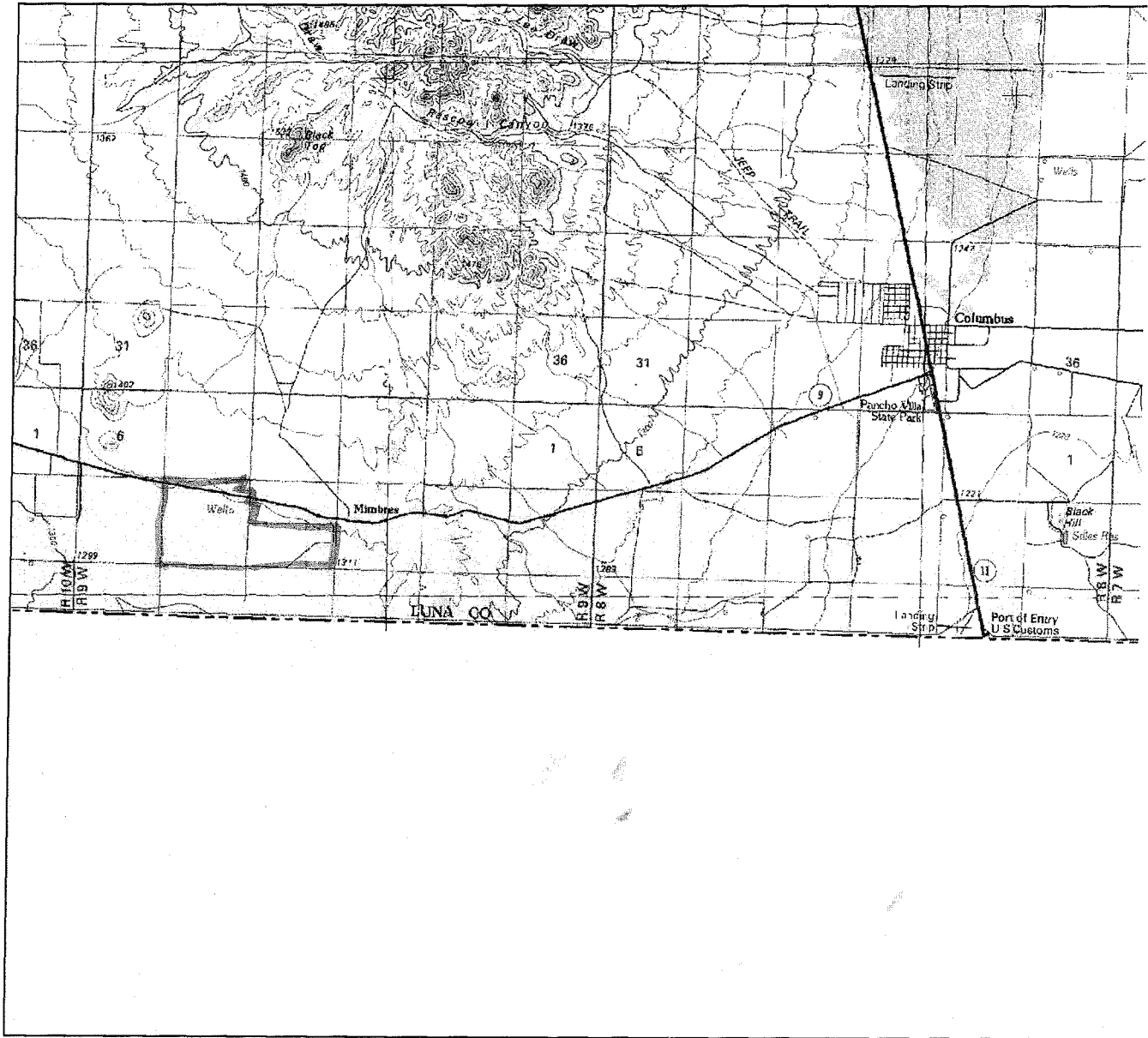
12. I certify that I have reviewed the appropriate documentation and have determined that:

- No major EJ or civil rights impact is likely to result if the proposal is implemented.  
 A major EJ or civil rights impact is likely to result if the proposal is implemented.

Juliet C. Bochicchio  
Juliet C. Bochicchio, EPS  
Name and Title of Certifying Official

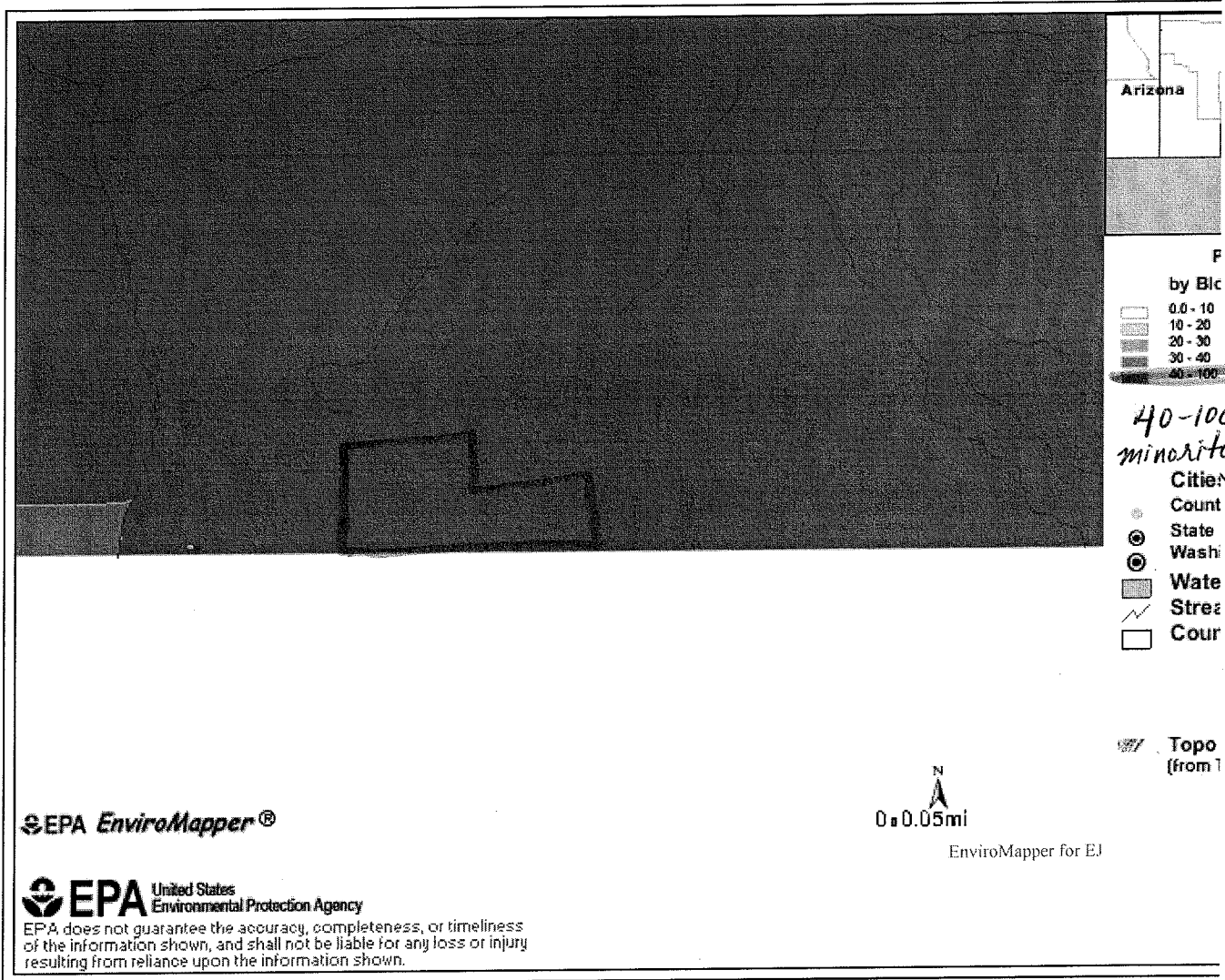
September 21, 2009  
Date





0 ————— 3 Mi  
0 ————— 16000 Ft

Map provided by MyTopo.com





Products View Cart Registration Support Downloads 0

HOME > MAPSERVER

MapServer Maps: View FREE USGS Topo Maps and Aerial Photos. GPS Navigation Software.

ENTER CITY OR PLACE NAME

SELECT STATE  **Go!**

OR ENTER ZIP CODE  **Go!**

**Advanced Search** **Help**

**WATERPROOF PRINTS**



Order custom topo maps and aerial photos  
**STARTING AT \$9.95!**

Latitude

Longitude

Coordinates  **DMS**

**-----FUN TOOLS-----**

Topo Map    Nautical Chart    Aeronautical Chart    Nav Photo    **LEARN MORE!** **Buy**

©1999-2005 Maptech Inc.  
All Rights Reserved Not For Navigation

**Scale**

Click To Zoom