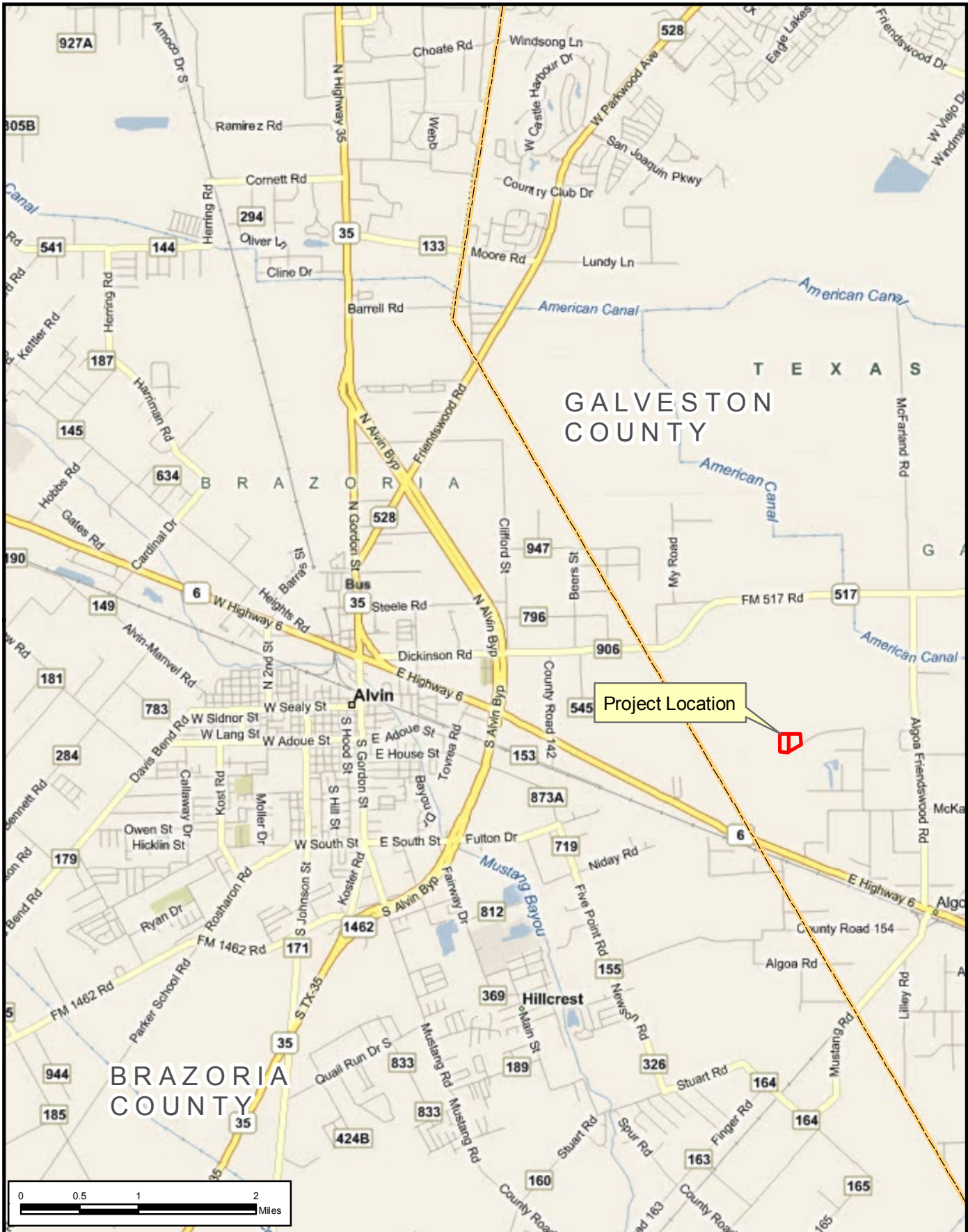


Figures



**FREASE
AND
NICHOLS**
4055 International Plaza, Suite 200
Fort Worth, TX 76109 - 4895
Phone - (817) 735 - 7300



**Waste Management Biogasoline Project
Galveston County**

Project Location Map

FN JOB NO	TRB10393
FILE	Figure1.mxd
DATE	March 2011
SCALE	1:72,000
DESIGNED	BME
DRAFTED	BME

1

FIGURE



FREASE AND NICHOLS
 4055 International Plaza, Suite 200
 Fort Worth, TX 76109 - 4895
 Phone - (817) 735 - 7300



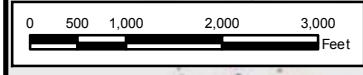
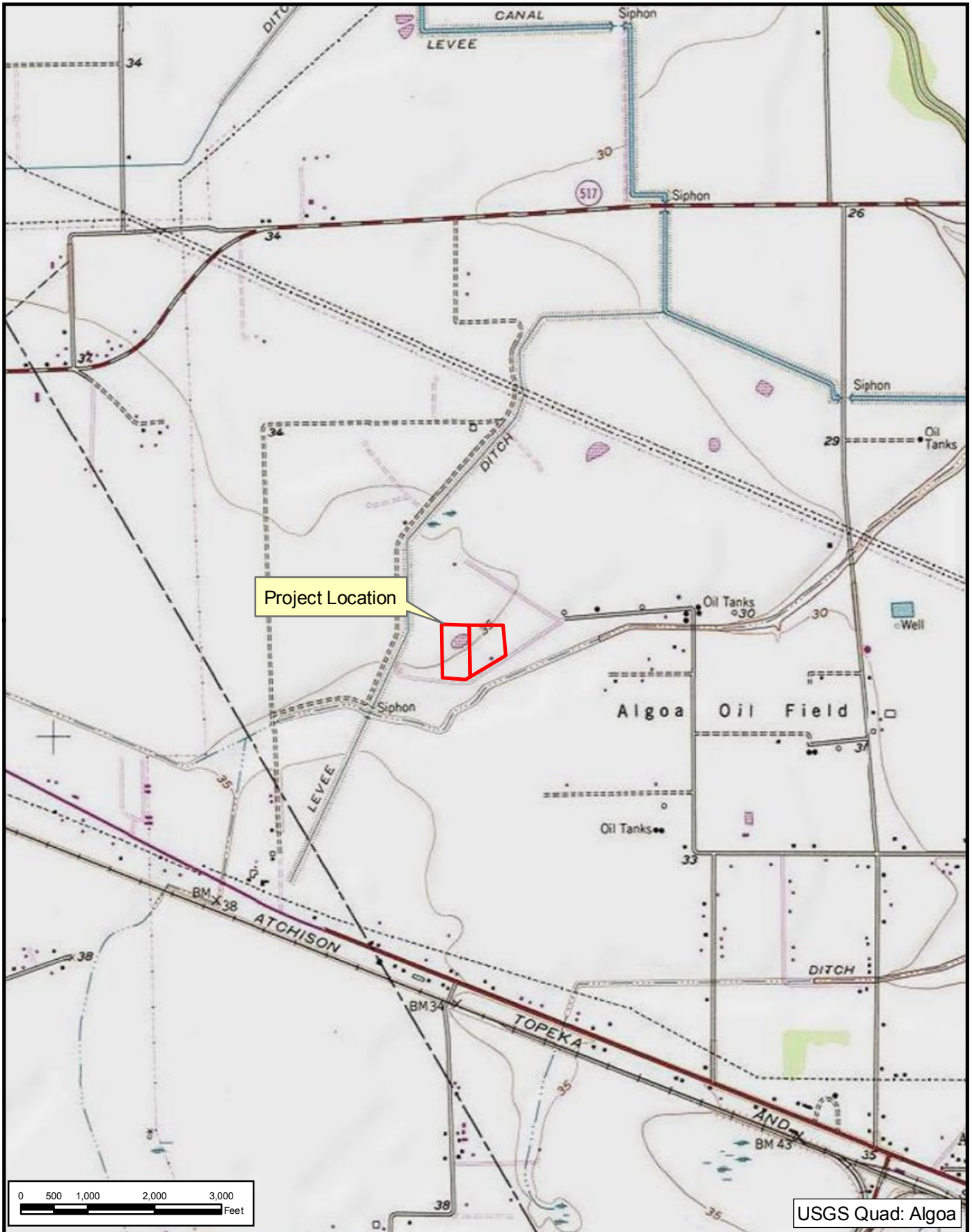
**Waste Management Biogasoline Project
 Galveston County**

**Project Location Map
 Aerial Imagery**

FN JOB NO	TRB 10393
FILE	Figure2.mxd
DATE	March 2011
SCALE	1:24,000
DESIGNED	BME
DRAFTED	BME

2

FIGURE



USGS Quad: Alcoa

**FREESE
AND
NICHOLS**
4055 International Plaza, Suite 200
Fort Worth, TX 76109 - 4895
Phone - (817) 735 - 7300



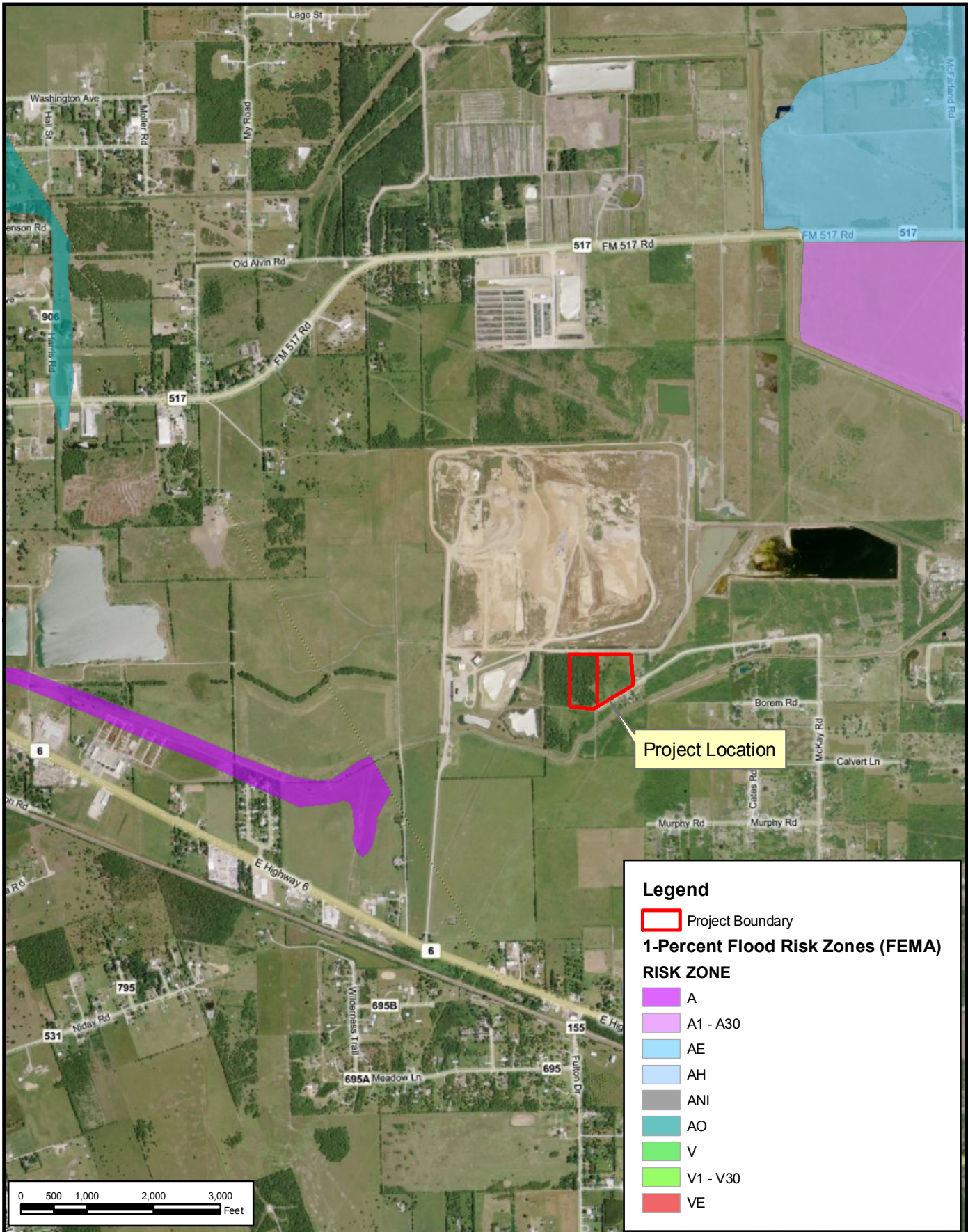
Waste Management Biogasoline Project
Galveston County

Project Location Map
USGS Topographic Map

FN JOB NO	TRB 10393
FILE	Figure2.mxd
DATE	March 2011
SCALE	1:24,000
DESIGNED	BME
DRAFTED	BME

3

FIGURE



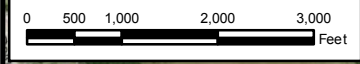
Legend

Project Boundary

1-Percent Flood Risk Zones (FEMA)

RISK ZONE

- A
- A1 - A30
- AE
- AH
- ANI
- AO
- V
- V1 - V30
- VE



FREESSE AND NICHOLS
 4055 International Plaza, Suite 200
 Fort Worth, TX 76109 - 4895
 Phone - (817) 735 - 7300



Waste Management Biogasoline Project
Galveston County

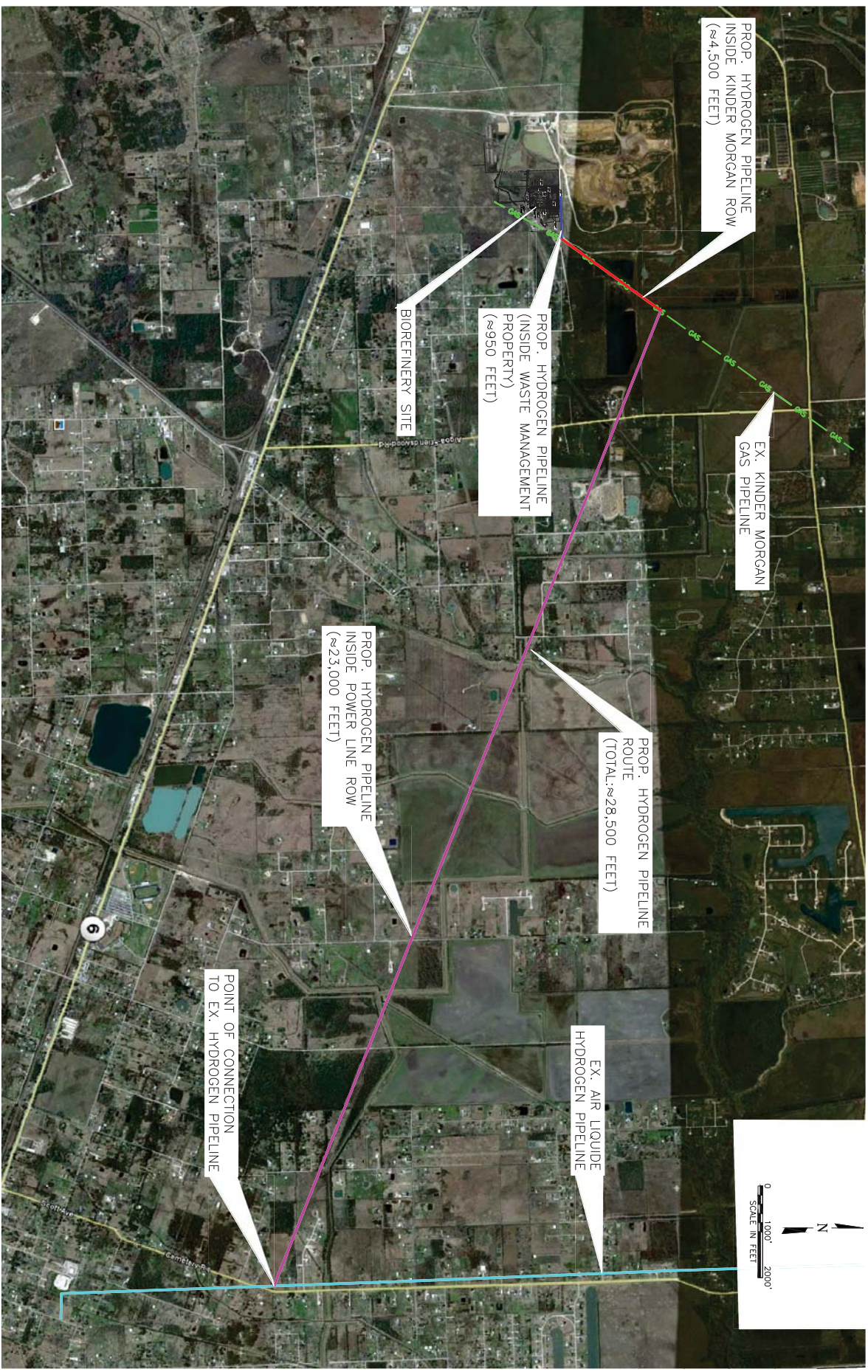
Project Location Map
FEMA Floodplains

FN JOB NO	TRB 10393
FILE	Figure4.mxd
DATE	March 2011
SCALE	1:24,000
DESIGNED	BME
DRAFTED	BME

4

FIGURE

Date: Jul 27, 2011 - 3:43pm User: jmr File: N:\V\BASE\CV-PIPELINE.dwg



NO.	ISSUE	BY	DATE	APP. JOB NO.

TERRAFUELS, LLC
ALVIN BIOREFINERY
 CIVIL
HYDROGEN PIPELINE ROUTE

FREE NICHOLS
 4040 Broadway Street, Suite 600
 San Antonio, Texas 78209-6350
 Phone - (210) 298-3800
 Fax - (210) 298-3801

Freeze and Nichols, Inc.
 Texas Registered Engineering Firm F-2144

NOT FOR CONSTRUCTION
 THIS DOCUMENT IS RELEASED FOR THE PURPOSE OF INTERIM REVIEW UNDER THE AUTHORITY OF JOINT #1, NEW P.C. TEXAS NO. 261332 ON DATE 11/24/2010. IT IS NOT TO BE USED FOR CONSTRUCTION, BIDDING OR PERMIT PURPOSES.

VERIFY SCALE Bar is one inch on original drawing. If not one inch on this sheet, adjust scale.

FILE NAME: H2-PIPELINE.dwg

Date: Sep 02, 2011 - 11:03am User: jmr File: N:\V\BASE\OFFSITE-UTILITIES_4.dwg



NO.	ISSUE	BY	DATE	FILE NAME	OFFSITE-UTILITIES_4.dwg

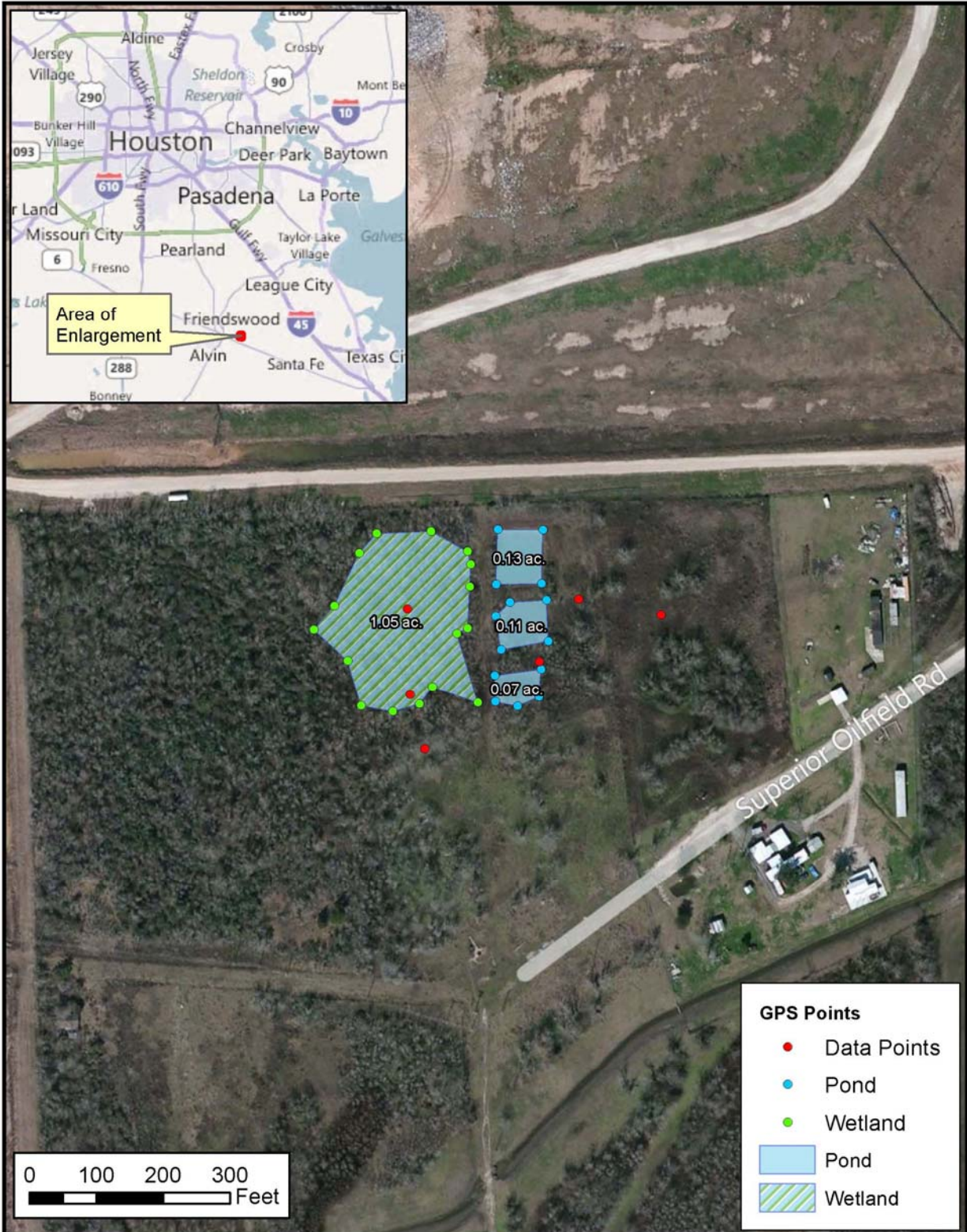
TERRAFUELS, LLC
ALVIN BIOREFINERY
 CIVIL

OFFSITE UTILITIES PLAN-ALTERNATE 3

4040 Broadway Street, Suite 600
 San Antonio, Texas 78209-6350
 Phone - (210) 298-3800
 Fax - (210) 298-3801

Freese and Nichols, Inc.
 Texas Registered Engineering Firm F-2144

NOT FOR CONSTRUCTION
 THIS DOCUMENT IS RELEASED FOR THE
 PURPOSE OF INTERIM REVIEW UNDER THE
 AUTHORITY OF JOINT #1, NEW P.C.
 TEXAS NO. 26132 ON DATE: 11/24/2010
 IT IS NOT TO BE USED FOR CONSTRUCTION,
 BIDDING OR PERMIT PURPOSES.



GPS Points

- Data Points
- Pond
- Wetland
- Pond
- Wetland

FRESE & NICHOLS
 3100 Wilcrest Dr., Suite 200
 Houston, Texas 77042
 Phone: 713-600-6800



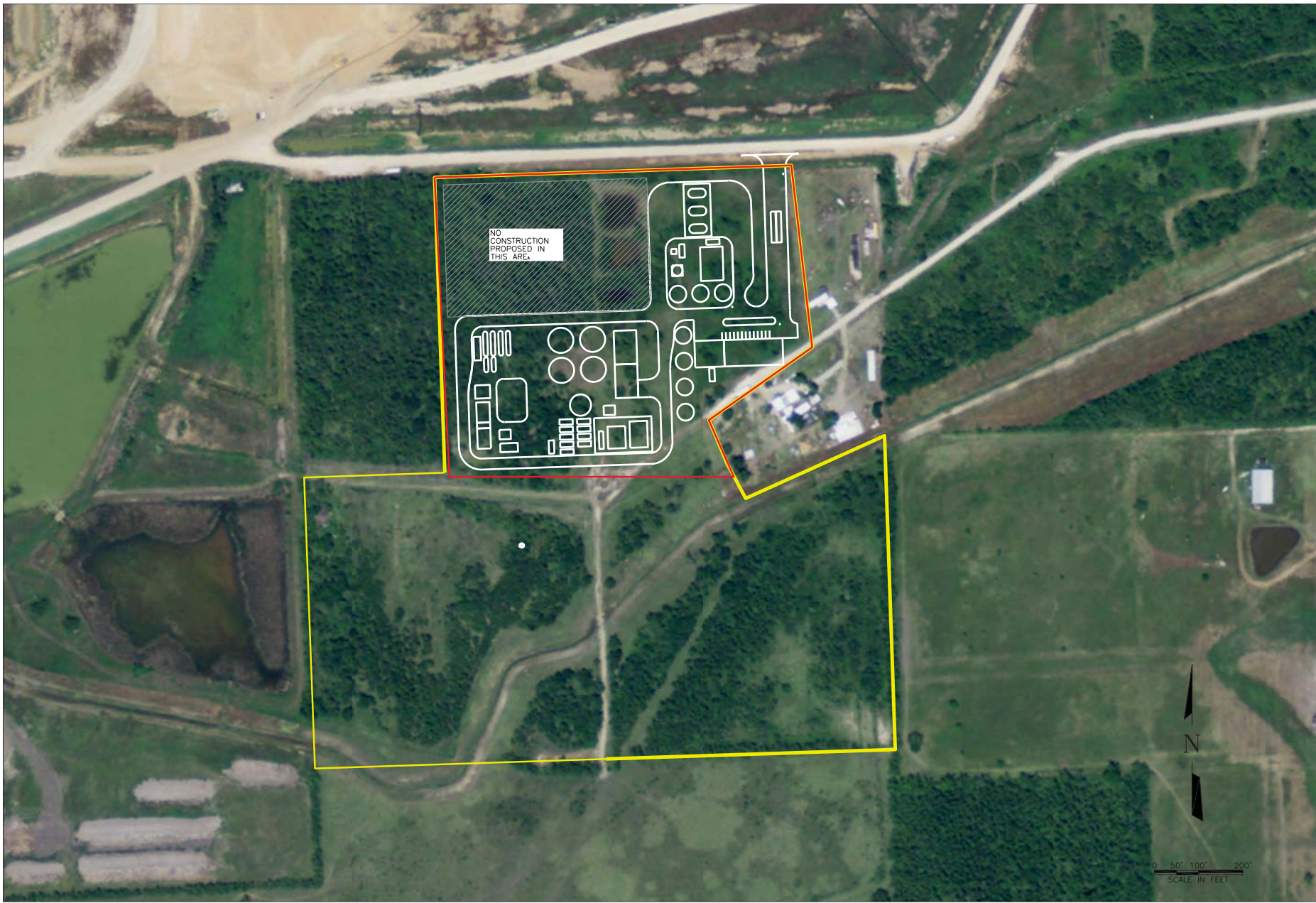
TerraFuels, LLC
Alvin Biorefinery

GPS Data

FN JOB NO	TRB10393
FILE	Figure5(Aerial).mxd
DATE	August 23 2011
SCALE	1:2,400
DESIGNED	DRG
DRAFTED	BME

8

FIGURE



Ernst and Nichols, Inc.
Texas Registered Professional Engineer License No. F-2144

NOT FOR CONSTRUCTION
THIS DOCUMENT IS RELEASED FOR THE
PURPOSE OF REVIEW ONLY AND SHOULD NOT
BE USED FOR CONSTRUCTION. IT IS NOT TO BE
USED FOR CONSTRUCTION ON DATE 11/24/2011.
IT IS THE RESPONSIBILITY OF THE ENGINEER,
ARCHITECT, OR OTHER PROFESSIONAL
ENGINEER OF RECORD TO VERIFY THE
ACCURACY OF THE INFORMATION.

ERNEST & NICHOLS
4040 Broadway Street, Suite 4000
Houston, Texas 77002
Phone = (214) 298-3000
Fax = (214) 298-3001

TERRAFUELS, LLC
ALVIN BIOREFINERY
CIVIL
OVERALL SITE PLAN-ALTERNATE 3

NO.	ISSUE	BY	DATE	PLAN NO.
				TRB1039.3
			04/20/11	
			DESIGNED	
			DRAWN	
			REVISION	
			ISSUED	
			FILE NAME	SITE PLAN_AERIAL.dwg

VERIFY SCALE Bar is one inch on original
this sheet, adjust scale, on

SHEET
SEQ.