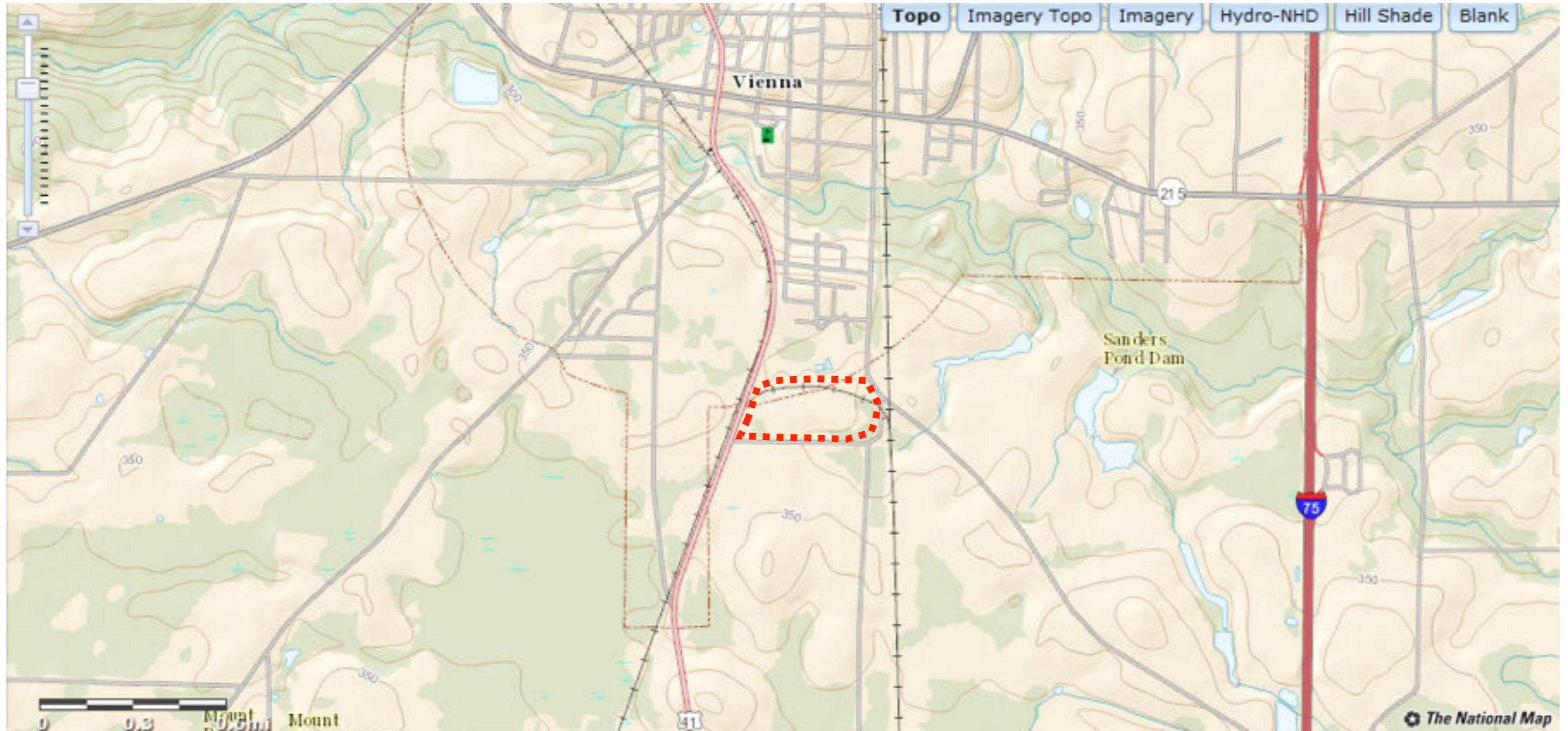


FIGURES 1abc

This page contains proprietary information that Ensyn requests not to be released to persons outside the Government, except for purposes for review and evaluation, under obligation of confidentiality.

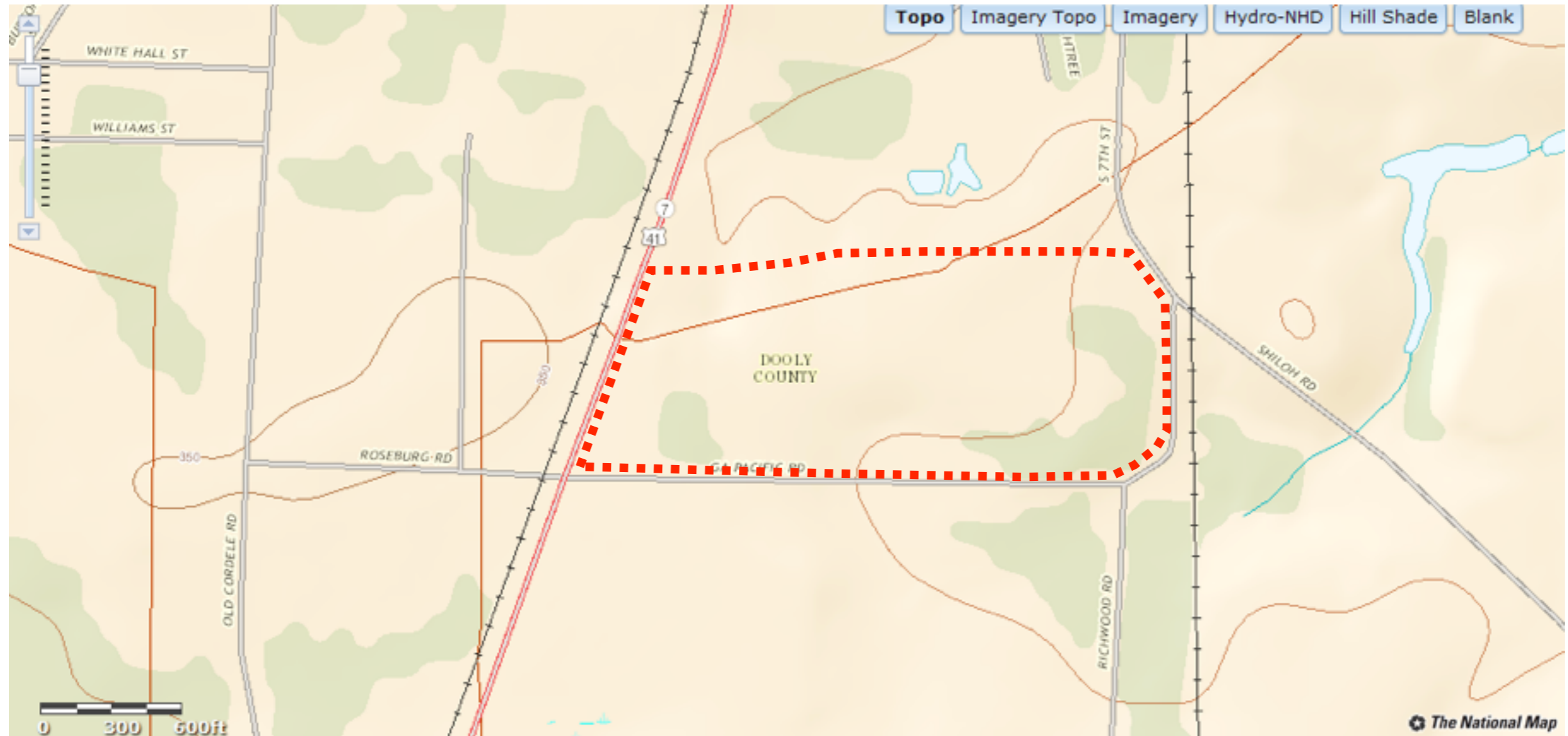
# Project Location - Vienna, GA



ENSYN GEORGIA BIOREFINERY PROJECT  
551 ROSEBURG ROAD  
VIENNA, GEORGIA 31092

This page contains proprietary information that Ensyn requests not to be released to persons outside the Government, except for purposes for review and evaluation, under obligation of confidentiality.

# Project Location - Vienna, GA



ENSYN GEORGIA BIOREFINERY PROJECT  
551 ROSEBURG ROAD  
VIENNA, GEORGIA 31092



This page contains proprietary information that Ensyn requests not to be released to persons outside the Government, except for purposes for review and evaluation, under obligation of confidentiality.

# Topographic Map of Site Location

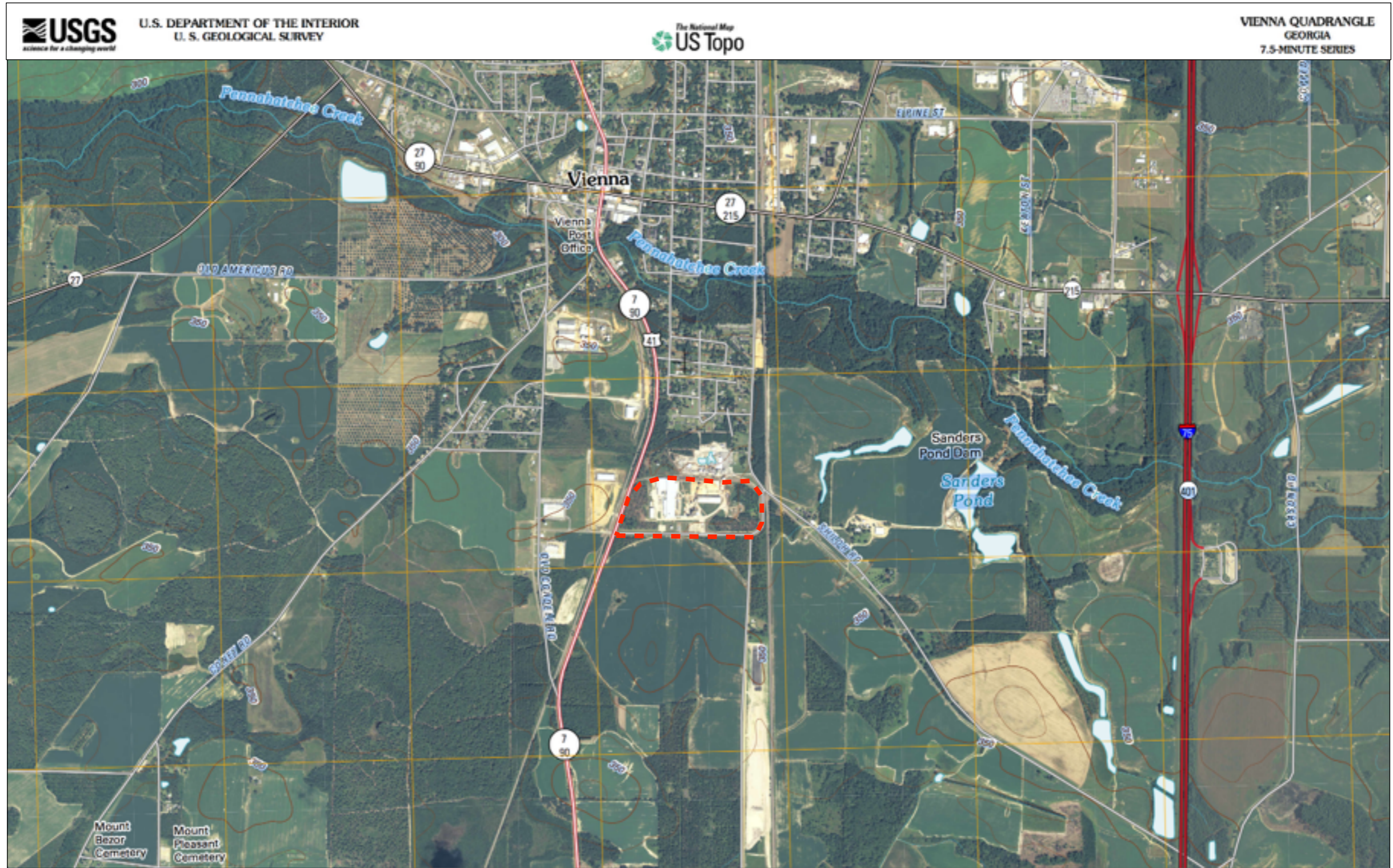




FIGURE 2

# Maximum Boundary of Disturbance



FIGURE 3



This page contains proprietary information that Ensyn requests not to be released to persons outside the Government, except for purposes for review and evaluation, under obligation of confidentiality.

# The Vienna Mill - A Strategic Location

- The Vienna Mill is located 130 miles south of Atlanta along State Highway 41 on the southern Vienna, GA city limits.
- The location provides excellent rail and road access and allows flexibility in transport of RFO to market in the Gulf Coast refining region.
- The mill site was originally selected in the 1970's partially due to its strategic location in relation to rail transport. The Vienna Mill property is bounded by two major rail lines and spurs from both lines enter the property directly.
- The CSX Line bounds the West side of the property. The line is one of the largest in the State and 63MM tons of gross freight pass by the Vienna mill every year.
- The Norfolk Southern line bounds the East side of the property. The line is mid-sized and carries 30MM tons of freight a year past the Vienna mill.

