

DEPARTMENT OF AGRICULTURE
Rural Development

AGENCY: Rural Utilities Service, USDA

ACTION: Notice of Availability of an Environmental Assessment – KPP Energy (Clay Center Energy Generation Facility)

SUMMARY: Notice is hereby given that the Rural Utilities Service (RUS), as required by the National Environmental Policy Act, is issuing an environmental assessment (EA) in connection with possible impacts related to a project proposed by KPP Energy. The proposal is for the construction of a solar facility in Clay County, Kansas. KPP Energy has submitted an application to RUS for funding of the proposal.

FOR FURTHER INFORMATION CONTACT: Environmental and Historic Preservation Division, USDA Rural Development, Rural Utilities Service, 1400 Independence Ave. SW, Washington, DC 20250-1570. Questions and comments should be emailed to RUS at RUS.IRA.comments@usda.gov.

SUPPLEMENTARY INFORMATION: KPP Energy proposes to construct a 3.0-megawatt (MW) solar energy generating facility on an approximately 18.44-acre tract located within the city limits of Clay Center in Clay County, Kansas. The Project would be located south of the intersection of West Lincoln Avenue and C Street. The Project would be considered a small-scale community solar energy generating facility and would consist of the construction of ground-mounted photovoltaics (PV) mounted on a steel rack system, which would be anchored into the ground using driven steel piles.

Topographic, Co., an environmental consultant retained by KPP Energy, prepared an environmental assessment for RUS that describes the project, assesses the proposed project's environmental impacts, and summarizes as applicable any mitigation measures used to minimize environmental effects. RUS has conducted an independent evaluation of the environmental assessment and believes that it accurately assesses the impacts of the proposed project. No significant impacts are expected as a result of the construction of the project.

Written questions and comments should be emailed to RUS at the email address provided above. RUS will accept questions and comments on the environmental assessment for 14 days from the first date of publication of this notice. Copies of the environmental assessment and supporting documentation will be available for public review at: <https://www.rd.usda.gov/resources/environmental-studies/assessments>.

Any final action by RUS related to the proposed project will be subject to, and contingent upon, compliance with all relevant Federal environmental laws and regulations and completion of environmental review procedures as prescribed by 7 CFR Part 1970, Environmental Policies and Procedures.

A general location map of the proposal is shown below.

Dated: November 25, 2024

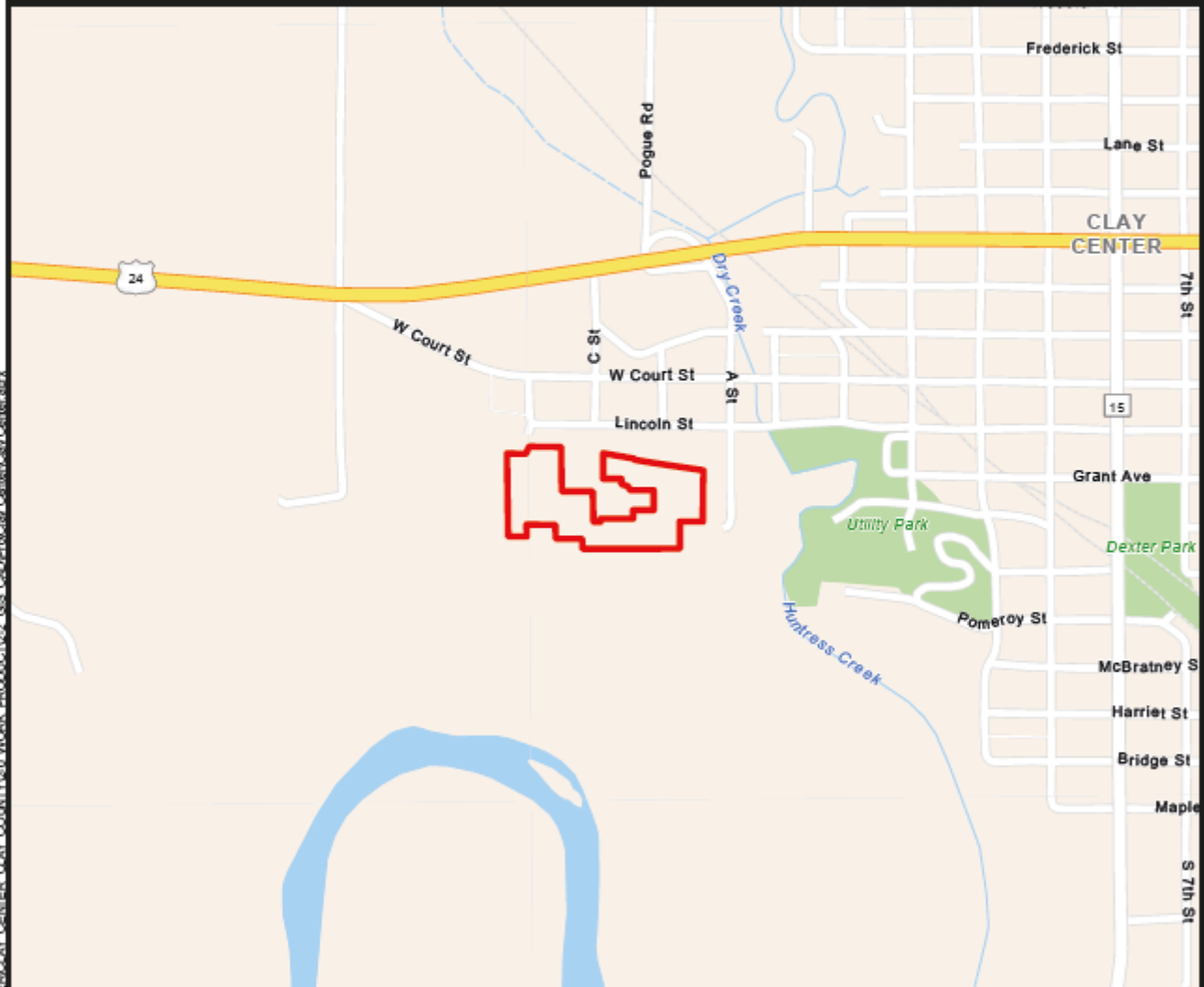


EXHIBIT 1 OF 7

0 600 1,200 Feet

**EXHIBIT A-1
GENERAL LOCATION MAP
18.44-ACRE ASSESSMENT AREA
CLAY CENTER KANSAS SOLAR SITE
CLAY COUNTY, KANSAS
KPP ENERGY**



481 WINSOTT ROAD
SUITE 200
BENBROOK, TEXAS 76126
PHONE: (817) 744-7512
FAX: (817) 744-7554

DATE: 11/13/2024