

DEPARTMENT OF AGRICULTURE

Rural Development

**AGENCY:** Rural Utilities Service, USDA

**ACTION:** Notice of Availability of an Environmental Assessment - SE Municipal Solar, LLC (Alliance Solar Project)

**SUMMARY:** Notice is hereby given that the Rural Utilities Service (RUS), as required by the National Environmental Policy Act, is issuing an environmental assessment (EA) in connection with possible impacts related to a project proposed by SE Municipal Solar, LLC (SE Municipal Solar). The proposal is for construction of a solar facility and for the connection to the City of Alliance's electric grid. SE Municipal Solar has submitted an application to the RUS for funding of the proposal.

**SUPPLEMENTARY INFORMATION:** The Municipal Energy Agency of Nebraska (MEAN) issued a request for proposals soliciting distributed solar electric generation for the City of Alliance (Alliance), Nebraska. SE Municipal Solar, LLC (SE Municipal Solar) prepared the winning bid to develop a solar facility and connect to Alliance's electric grid. The proposed solar generation facility will be placed on land owned by Alliance, connecting to its municipal electric distribution system. The proposed project area is approximately 1.5 miles west of Alliance and consists of a 60-acre tract of farmland located approximately 1,700 feet west of the intersection of Country Club Road and County Road 62 in Box Butte County, NE. No transmission lines are being proposed in association with this project.

Terracon, retained by the applicant (SE Municipal Solar) has prepared an EA for RUS that describes the project, assesses the proposed project's environmental impacts, and summarizes as applicable any mitigation measures used to minimize environmental effects. RUS has conducted an independent evaluation of the environmental assessment and believes that it accurately assesses the impacts of the proposed project. No significant impacts are expected as a result of the construction of the project.

Written questions and comments should be emailed to RUS at:

[RUSPublicComments@usda.gov](mailto:RUSPublicComments@usda.gov)

RUS will accept questions and comments on the environmental assessment for 14 days from the first date of publication of this notice. All comments must be provided electronically with no hard copy comments being accepted at this time.

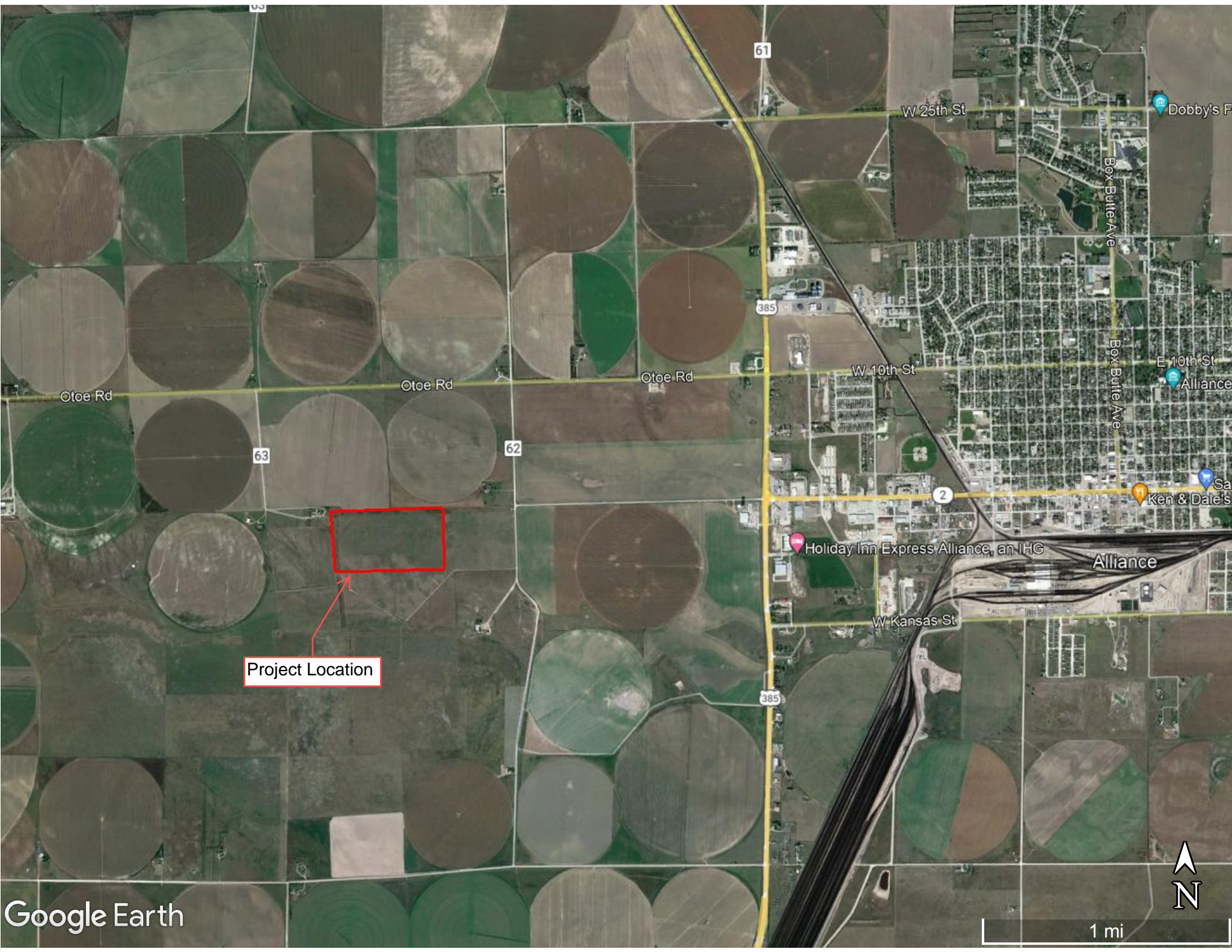
Copies of the Environmental Assessment and supporting documentation will be available for public review at:

<https://www.rd.usda.gov/resources/environmental-studies/assessments>

Any final action by RUS related to the proposed project will be subject to, and contingent upon, compliance with all relevant Federal environmental laws and regulations and completion of environmental review procedures as prescribed by 7 CFR Part 1970, Environmental Policies and Procedures.

A general location map of the project is shown below.

Dated: 07/19/2023



Project Location



61

W 25th St

Dobby's F

Box Butte Ave

385

W 10th St

E 10th St

Alliance

Box Butte Ave

Otoe Rd

Otoe Rd

Otoe Rd

63

62

2

Ken & Dale's

Holiday Inn Express Alliance, an IHG

Alliance

W Kansas St

385