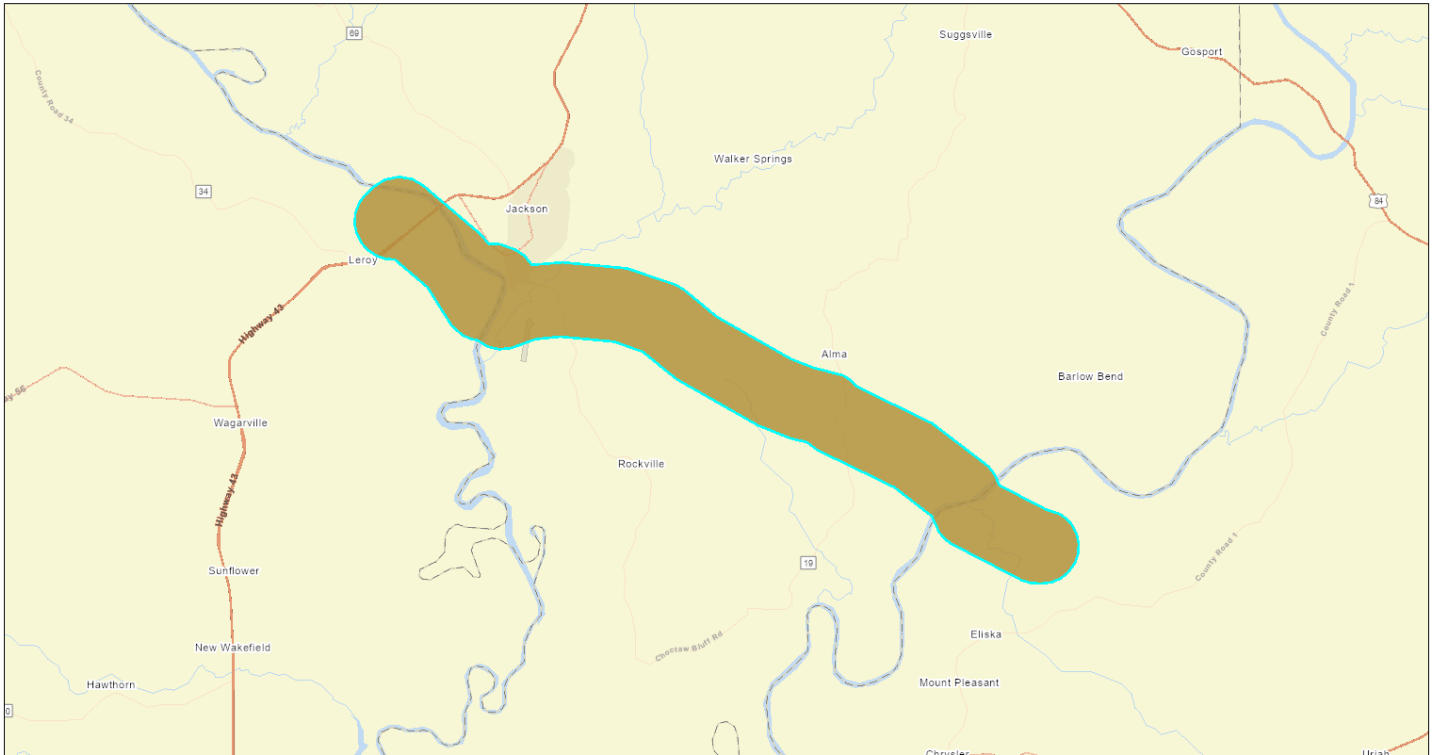


# NEPAssist Report

## LEC3 Project Area 1-mi Buffer



October 10, 2025

- LEC3 Project Area 1-mi Buffer
- lec3\_projectarea\_1mi

1:183,450



Sources: Esri, TomTom, Garmin, FAO, NOAA, USGS, (c) OpenStreetMap contributors, and the GIS User Community

Input Coordinates: 31.373241,-87.657363,31.373394,-87.662070,31.374376,-87.666373,31.388947,-87.699305,31.390925,-87.702413,31.393464,-87.704938,31.399805,-87.708297,31.411229,-87.725608,31.425879,-87.761118,31.429029,-87.766086,31.430631,-87.773838,31.435713,-87.788822,31.453907,-87.826372,31.464765,-87.842137,31.468742,-87.855226,31.470742,-87.880109,31.469792,-87.891635,31.466252,-87.902998,31.465761,-87.908550,31.466742,-87.913715,31.469309,-87.918683,31.469952,-87.921980,31.471324,-87.925573,31.475040,-87.930559,31.490208,-87.941743,31.501185,-87.956906,31.501437,-87.961074,31.502602,-87.965198,31.504761,-87.969051,31.507320,-87.971935,31.511547,-87.974603,31.515330,-87.975501,31.519611,-87.975124,31.523716,-87.973264,31.526534,-87.970821,31.530102,-87.966267,31.532674,-87.961497,31.533823,-87.954903,31.532896,-87.948803,31.530331,-87.943674,31.510980,-87.916958,31.507381,-87.913526,31.507228,-87.908119,31.505098,-87.901202,31.502709,-87.896926,31.499086,-87.893422,31.500074,-87.879382,31.497700,-87.849396,31.491235,-87.827028,31.489327,-87.823147,31.478480,-87.807687,31.461861,-87.773344,31.458551,-87.763346,31.455386,-87.749314,31.453877,-87.746458,31.450972,-87.742927,31.436610,-87.708360,31.419593,-87.682282,31.416227,-87.679165,31.412095,-87.677153,31.402450,-87.655396,31.400740,-87.649170,31.398601,-87.645721,31.396055,-87.643196,31.392635,-87.641220,31.388886,-87.640340,31.385051,-87.640627,31.381432,-87.642056,31.377551,-87.645290,31.375219,-87.648820,31.373747,-87.652934,31.373241,-87.657363

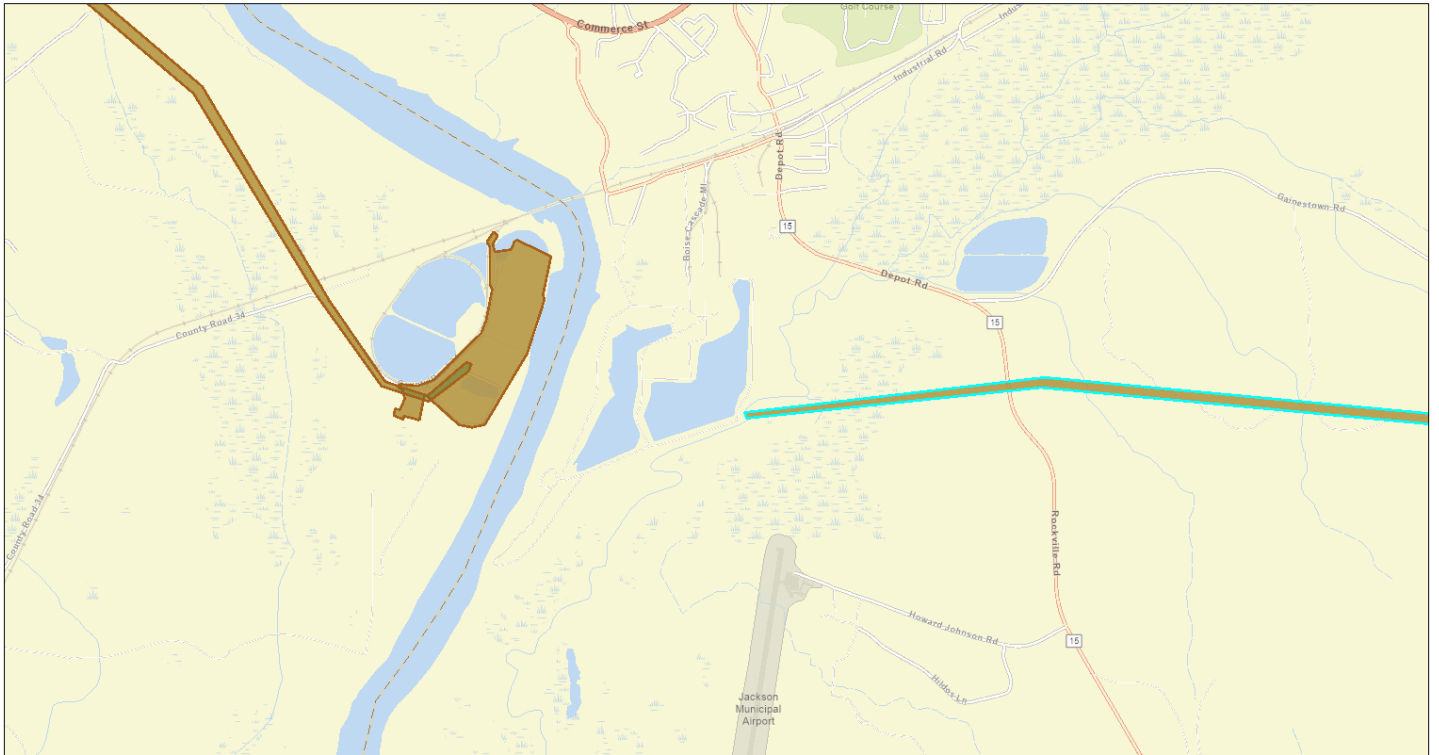
Project Area	45.88 sq mi
Within an Ozone 1-hr (1979 standard) Non-Attainment/Maintenance Area?	no
Within an Ozone 8-hr (1997 standard) Non-Attainment/Maintenance Area?	no
Within an Ozone 8-hr (2008 standard) Non-Attainment/Maintenance Area?	no
Within an Ozone 8-hr (2015 standard) Non-Attainment/Maintenance Area?	no
Within a Lead (2008 standard) Non-Attainment/Maintenance Area?	no
Within a SO2 1-hr (2010 standard) Non-Attainment/Maintenance Area?	no
Within a PM2.5 24hr (2006 standard) Non-Attainment/Maintenance Area?	no
Within a PM2.5 Annual (1997 standard) Non-Attainment/Maintenance Area?	no
Within a PM2.5 Annual (2012 standard) Non-Attainment/Maintenance Area?	no

Within a PM10 (1987 standard) Non-Attainment/Maintenance Area?	no
Within a CO Annual (1971 standard) Non-Attainment/Maintenance Area?	no
Within a NO2 Annual (1971 standard) Non-Attainment/Maintenance Area?	no
Within a Federal Land?	no
Within an impaired stream?	yes
Within an impaired waterbody?	no
Within a waterbody?	yes
Within a stream?	yes
Within an NWI wetland?	Available Online
Within a Brownfields site?	no
Within a Superfund site?	no
Within a Toxic Release Inventory (TRI) site?	yes
Within a water discharger (NPDES)?	yes
Within a hazardous waste (RCRA) facility?	yes
Within an air emission facility?	yes
Within a school?	yes
Within an airport?	yes
Within a hospital?	no
Within a designated sole source aquifer?	no
Within a historic property on the National Register of Historic Places?	no
Within a Chemical Data Reporting (CDR) site?	yes
Within a Land Cession Boundary?	yes
Within a tribal area (lower 48 states)?	no
Within the service area of a mitigation or conservation bank?	yes
Within the service area of an In-Lieu-Fee Program?	yes
Within a Public Property Boundary of the Formerly Used Defense Sites?	no
Within a Munitions Response Site?	no
Within an Essential Fish Habitat (EFH)?	no
Within a Habitat Area of Particular Concern (HAPC)?	no
Within an EFH Area Protected from Fishing (EFHA)?	no
Within a Bureau of Land Management Area of Critical Environmental Concern?	no
Within an ESA-designated Critical Habitat Area per U.S. Fish & Wildlife Service?	no
Within an ESA-designated Critical Habitat river, stream or water feature per U.S. Fish & Wildlife Service?	yes

Created on: 10/10/2025 12:36:42 PM

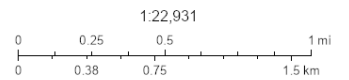
# NEPAssist Report

## LEC3 115-kV Study Area



October 10, 2025

LEC3 115-kV Study Area
  LEC3 Site
  lec3\_230kv\_studyarea
  lec3\_site
  lec3\_115kv\_studyarea



Sources: Esri, TomTom, Garmin, FAO, NOAA, USGS, (c) OpenStreetMap contributors, and the GIS User Community

Input Coordinates: 31.388226,-87.659824,31.388195,-87.657381,31.387758,-87.657390,31.387797,-87.659923,31.401522,-87.690852,31.408799,-87.694086,31.423679,-87.716724,31.438917,-87.753671,31.442105,-87.756914,31.444381,-87.768440,31.448413,-87.780621,31.466290,-87.817550,31.477560,-87.833594,31.483046,-87.851695,31.485290,-87.879687,31.483773,-87.896737,31.484057,-87.896836,31.485788,-87.879480,31.483544,-87.851426,31.478173,-87.834133,31.477583,-87.832696,31.466811,-87.817712,31.449095,-87.781294,31.444711,-87.768386,31.442373,-87.756663,31.439277,-87.753285,31.423939,-87.716355,31.409151,-87.693745,31.401798,-87.690574,31.388226,-87.659824

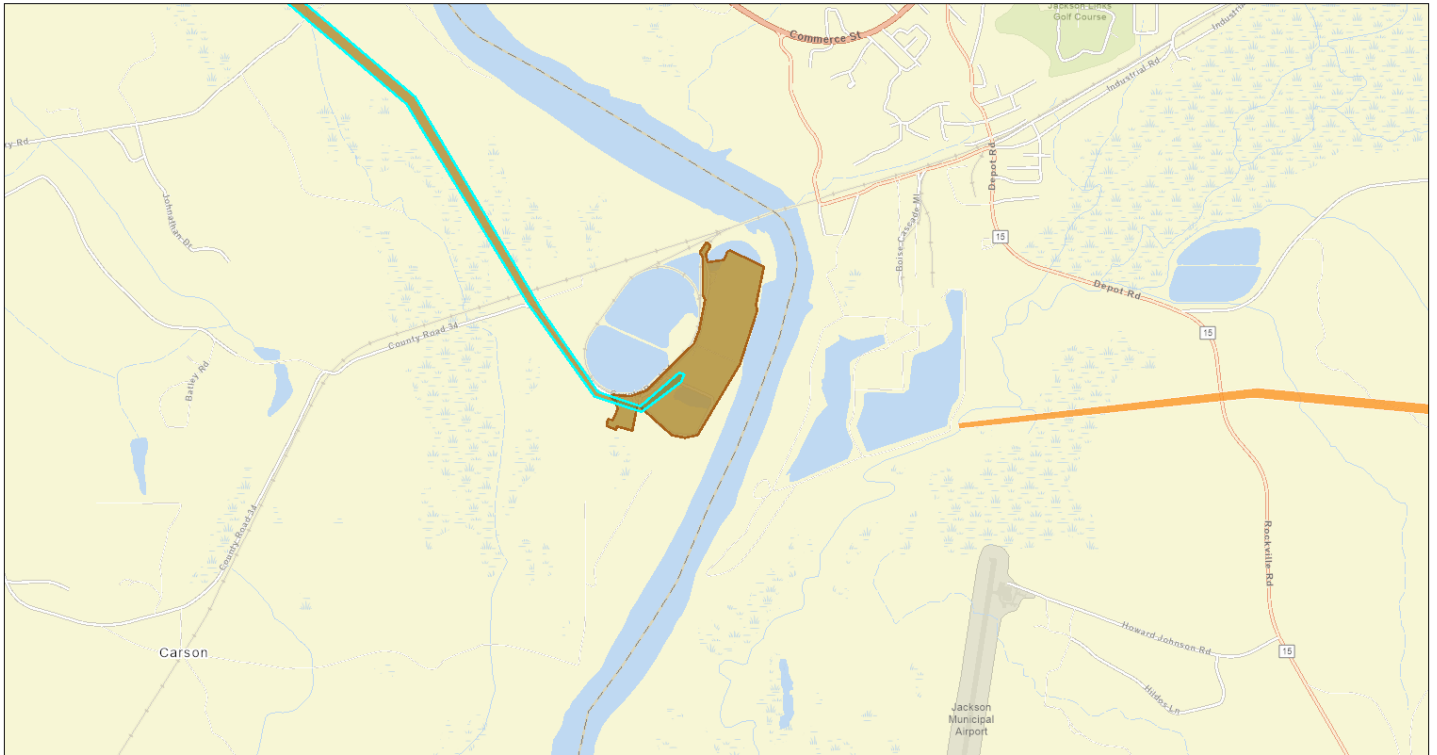
Project Area	0.45 sq mi
Within an Ozone 1-hr (1979 standard) Non-Attainment/Maintenance Area?	no
Within an Ozone 8-hr (1997 standard) Non-Attainment/Maintenance Area?	no
Within an Ozone 8-hr (2008 standard) Non-Attainment/Maintenance Area?	no
Within an Ozone 8-hr (2015 standard) Non-Attainment/Maintenance Area?	no
Within a Lead (2008 standard) Non-Attainment/Maintenance Area?	no
Within a SO2 1-hr (2010 standard) Non-Attainment/Maintenance Area?	no
Within a PM2.5 24hr (2006 standard) Non-Attainment/Maintenance Area?	no
Within a PM2.5 Annual (1997 standard) Non-Attainment/Maintenance Area?	no
Within a PM2.5 Annual (2012 standard) Non-Attainment/Maintenance Area?	no
Within a PM10 (1987 standard) Non-Attainment/Maintenance Area?	no
Within a CO Annual (1971 standard) Non-Attainment/Maintenance Area?	no
Within a NO2 Annual (1971 standard) Non-Attainment/Maintenance Area?	no
Within a Federal Land?	no
Within an impaired stream?	no
Within an impaired waterbody?	no

Within a waterbody?	yes
Within a stream?	yes
Within an NWI wetland?	Available Online
Within a Brownfields site?	no
Within a Superfund site?	no
Within a Toxic Release Inventory (TRI) site?	no
Within a water discharger (NPDES)?	no
Within a hazardous waste (RCRA) facility?	no
Within an air emission facility?	no
Within a school?	no
Within an airport?	no
Within a hospital?	no
Within a designated sole source aquifer?	no
Within a historic property on the National Register of Historic Places?	no
Within a Chemical Data Reporting (CDR) site?	no
Within a Land Cession Boundary?	yes
Within a tribal area (lower 48 states)?	no
Within the service area of a mitigation or conservation bank?	yes
Within the service area of an In-Lieu-Fee Program?	yes
Within a Public Property Boundary of the Formerly Used Defense Sites?	no
Within a Munitions Response Site?	no
Within an Essential Fish Habitat (EFH)?	no
Within a Habitat Area of Particular Concern (HAPC)?	no
Within an EFH Area Protected from Fishing (EFHA)?	no
Within a Bureau of Land Management Area of Critical Environmental Concern?	no
Within an ESA-designated Critical Habitat Area per U.S. Fish & Wildlife Service?	no
Within an ESA-designated Critical Habitat river, stream or water feature per U.S. Fish & Wildlife Service?	yes

Created on: 10/10/2025 12:42:56 PM

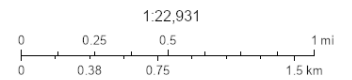
# NEPAssist Report

## LEC3 230-kV Study Area



October 10, 2025

- LEC3 230-kV Study Area
- LEC3 Site
- lec3\_site
- lec3\_230kv\_studyarea
- lec3\_115kv\_studyarea



Sources: Esri, TomTom, Garmin, FAO, NOAA, USGS, (c) OpenStreetMap contributors, and the GIS User Community

Input Coordinates: 31.519244,-87.954606,31.500143,-87.928223,31.489549,-87.920848,31.485581,-87.917641,31.484884,-87.915188,31.486539,-87.912943,31.486447,-87.912646,31.486064,-87.912844,31.484601,-87.915125,31.485359,-87.917847,31.489925,-87.921683,31.499783,-87.928717,31.513868,-87.948183,31.513339,-87.948911,31.517873,-87.955379,31.515721,-87.957589,31.515706,-87.957912,31.516188,-87.958523,31.516640,-87.958352,31.516341,-87.957777,31.519236,-87.955038,31.519244,-87.954606

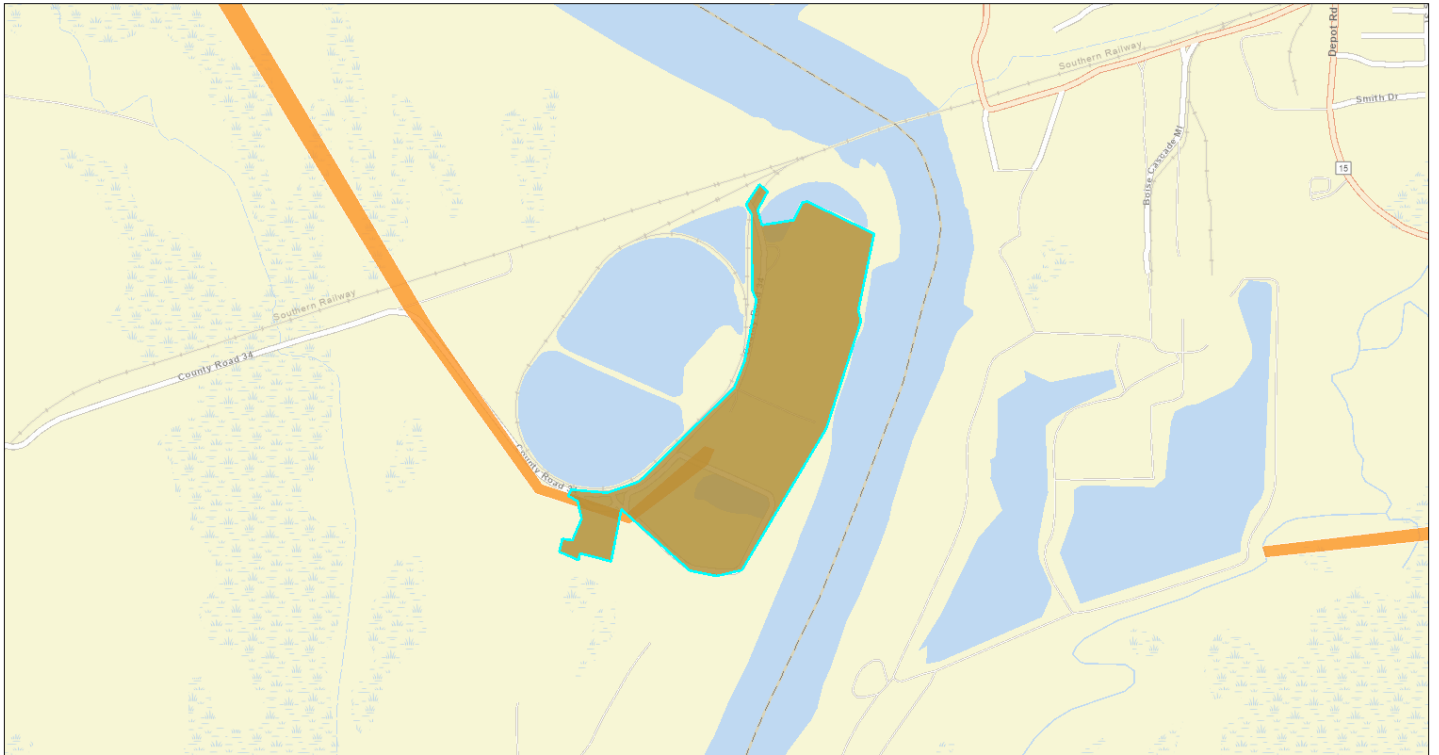
Project Area	0.16 sq mi
Within an Ozone 1-hr (1979 standard) Non-Attainment/Maintenance Area?	no
Within an Ozone 8-hr (1997 standard) Non-Attainment/Maintenance Area?	no
Within an Ozone 8-hr (2008 standard) Non-Attainment/Maintenance Area?	no
Within an Ozone 8-hr (2015 standard) Non-Attainment/Maintenance Area?	no
Within a Lead (2008 standard) Non-Attainment/Maintenance Area?	no
Within a SO2 1-hr (2010 standard) Non-Attainment/Maintenance Area?	no
Within a PM2.5 24hr (2006 standard) Non-Attainment/Maintenance Area?	no
Within a PM2.5 Annual (1997 standard) Non-Attainment/Maintenance Area?	no
Within a PM2.5 Annual (2012 standard) Non-Attainment/Maintenance Area?	no
Within a PM10 (1987 standard) Non-Attainment/Maintenance Area?	no
Within a CO Annual (1971 standard) Non-Attainment/Maintenance Area?	no
Within a NO2 Annual (1971 standard) Non-Attainment/Maintenance Area?	no
Within a Federal Land?	no
Within an impaired stream?	no
Within an impaired waterbody?	no
Within a waterbody?	yes

Within a stream?	yes
Within an NWI wetland?	Available Online
Within a Brownfields site?	no
Within a Superfund site?	no
Within a Toxic Release Inventory (TRI) site?	no
Within a water discharger (NPDES)?	no
Within a hazardous waste (RCRA) facility?	no
Within an air emission facility?	no
Within a school?	no
Within an airport?	no
Within a hospital?	no
Within a designated sole source aquifer?	no
Within a historic property on the National Register of Historic Places?	no
Within a Chemical Data Reporting (CDR) site?	no
Within a Land Cession Boundary?	yes
Within a tribal area (lower 48 states)?	no
Within the service area of a mitigation or conservation bank?	yes
Within the service area of an In-Lieu-Fee Program?	yes
Within a Public Property Boundary of the Formerly Used Defense Sites?	no
Within a Munitions Response Site?	no
Within an Essential Fish Habitat (EFH)?	no
Within a Habitat Area of Particular Concern (HAPC)?	no
Within an EFH Area Protected from Fishing (EFHA)?	no
Within a Bureau of Land Management Area of Critical Environmental Concern?	no
Within an ESA-designated Critical Habitat Area per U.S. Fish & Wildlife Service?	no
Within an ESA-designated Critical Habitat river, stream or water feature per U.S. Fish & Wildlife Service?	no

Created on: 10/10/2025 12:41:38 PM

# NEPAssist Report

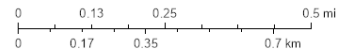
## LEC3 Site



October 10, 2025

- LEC3 Site
- lec3\_site
- lec3\_230kv\_studyarea
- lec3\_115kv\_studyarea

1:11,466



Sources: Esri, TomTom, Garmin, FAO, NOAA, USGS, (c) OpenStreetMap contributors, and the GIS User Community

Input Coordinates: 31.485298,-87.916895,31.485451,-87.916814,31.485375,-87.915763,31.485650,-87.914847,31.487971,-87.912089,31.488623,-87.911793,31.490124,-87.911451,31.490377,-87.911577,31.492238,-87.911586,31.492476,-87.911757,31.492981,-87.911362,31.492797,-87.911128,31.492353,-87.911415,31.491978,-87.911290,31.492100,-87.910373,31.492529,-87.910131,31.492560,-87.909987,31.491763,-87.908047,31.489871,-87.908505,31.489618,-87.908424,31.486960,-87.909430,31.483467,-87.911874,31.483321,-87.912601,31.483452,-87.913374,31.484969,-87.915359,31.483682,-87.915655,31.483881,-87.916554,31.483712,-87.916599,31.483919,-87.917156,31.484241,-87.917066,31.484202,-87.916778,31.484731,-87.916509,31.485168,-87.916626,31.485298,-87.916895

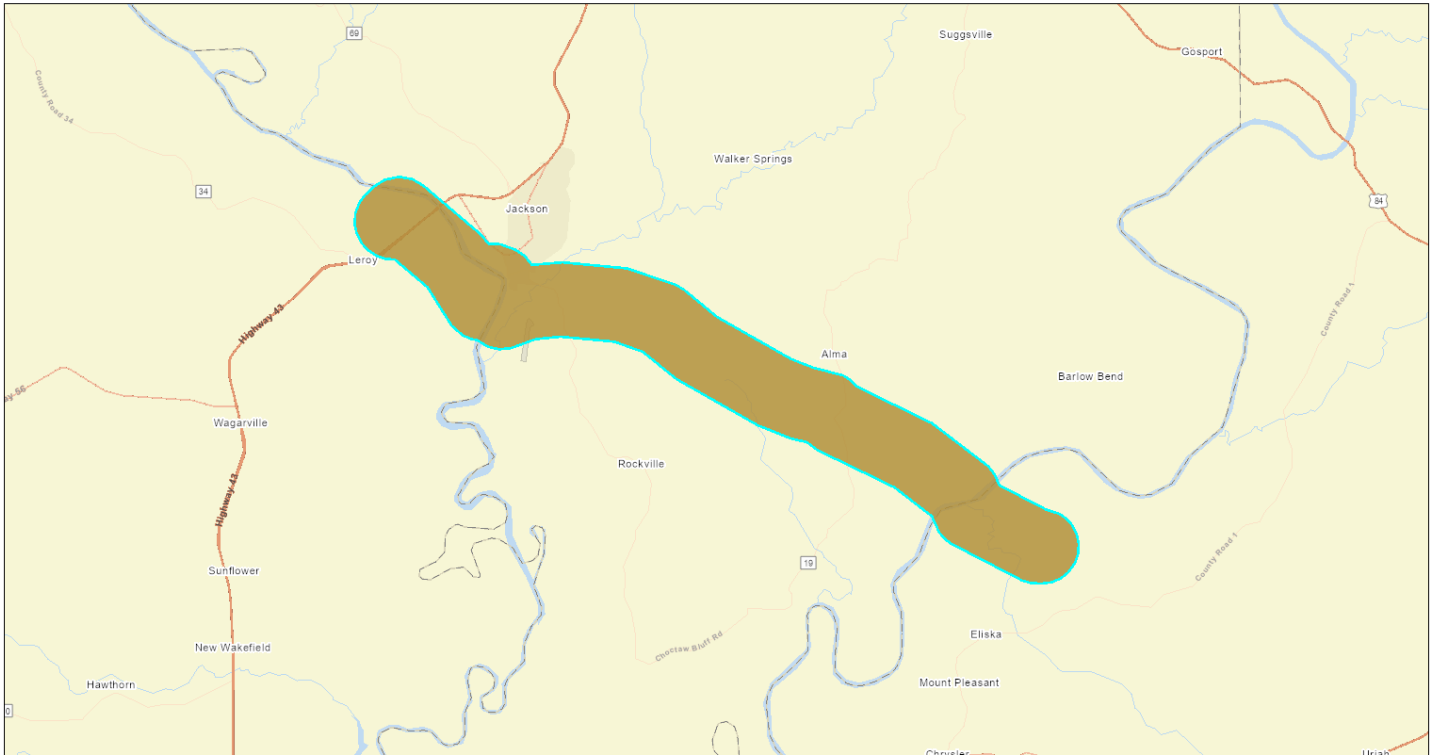
Project Area	0.13 sq mi
Within an Ozone 1-hr (1979 standard) Non-Attainment/Maintenance Area?	no
Within an Ozone 8-hr (1997 standard) Non-Attainment/Maintenance Area?	no
Within an Ozone 8-hr (2008 standard) Non-Attainment/Maintenance Area?	no
Within an Ozone 8-hr (2015 standard) Non-Attainment/Maintenance Area?	no
Within a Lead (2008 standard) Non-Attainment/Maintenance Area?	no
Within a SO2 1-hr (2010 standard) Non-Attainment/Maintenance Area?	no
Within a PM2.5 24hr (2006 standard) Non-Attainment/Maintenance Area?	no
Within a PM2.5 Annual (1997 standard) Non-Attainment/Maintenance Area?	no
Within a PM2.5 Annual (2012 standard) Non-Attainment/Maintenance Area?	no
Within a PM10 (1987 standard) Non-Attainment/Maintenance Area?	no
Within a CO Annual (1971 standard) Non-Attainment/Maintenance Area?	no
Within a NO2 Annual (1971 standard) Non-Attainment/Maintenance Area?	no
Within a Federal Land?	no
Within an impaired stream?	no

Within an impaired waterbody?	no
Within a waterbody?	yes
Within a stream?	no
Within an NWI wetland?	Available Online
Within a Brownfields site?	no
Within a Superfund site?	no
Within a Toxic Release Inventory (TRI) site?	yes
Within a water discharger (NPDES)?	yes
Within a hazardous waste (RCRA) facility?	yes
Within an air emission facility?	yes
Within a school?	no
Within an airport?	no
Within a hospital?	no
Within a designated sole source aquifer?	no
Within a historic property on the National Register of Historic Places?	no
Within a Chemical Data Reporting (CDR) site?	no
Within a Land Cession Boundary?	yes
Within a tribal area (lower 48 states)?	no
Within the service area of a mitigation or conservation bank?	no
Within the service area of an In-Lieu-Fee Program?	yes
Within a Public Property Boundary of the Formerly Used Defense Sites?	no
Within a Munitions Response Site?	no
Within an Essential Fish Habitat (EFH)?	no
Within a Habitat Area of Particular Concern (HAPC)?	no
Within an EFH Area Protected from Fishing (EFHA)?	no
Within a Bureau of Land Management Area of Critical Environmental Concern?	no
Within an ESA-designated Critical Habitat Area per U.S. Fish & Wildlife Service?	no
Within an ESA-designated Critical Habitat river, stream or water feature per U.S. Fish & Wildlife Service?	no

Created on: 10/10/2025 12:40:13 PM

# NEPAssist Report

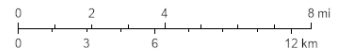
## LEC3 Project Area 1-mi Buffer



October 10, 2025

- LEC3 Project Area 1-mi Buffer
- lec3\_projectarea\_1mi

1:183,450



Sources: Esri, TomTom, Garmin, FAO, NOAA, USGS, (c) OpenStreetMap contributors, and the GIS User Community

Input Coordinates: 31.373241,-87.657363,31.373394,-87.662070,31.374376,-87.666373,31.388947,-87.699305,31.390925,-87.702413,31.393464,-87.704938,31.399805,-87.708297,31.411229,-87.725608,31.425879,-87.761118,31.429029,-87.766086,31.430631,-87.773838,31.435713,-87.788822,31.453907,-87.826372,31.464765,-87.842137,31.468742,-87.855226,31.470742,-87.880109,31.469792,-87.891635,31.466252,-87.902998,31.465761,-87.908550,31.466742,-87.913715,31.469309,-87.918683,31.469952,-87.921980,31.471324,-87.925573,31.475040,-87.930559,31.490208,-87.941743,31.501185,-87.956906,31.501437,-87.961074,31.502602,-87.965198,31.504761,-87.969051,31.507320,-87.971935,31.511547,-87.974603,31.515330,-87.975501,31.519611,-87.975124,31.523716,-87.973264,31.526534,-87.970821,31.530102,-87.966267,31.532674,-87.961497,31.533823,-87.954903,31.532896,-87.948803,31.530331,-87.943674,31.510980,-87.916958,31.507381,-87.913526,31.507228,-87.908119,31.505098,-87.901202,31.502709,-87.896926,31.499086,-87.893422,31.500074,-87.879382,31.497700,-87.849396,31.491235,-87.827028,31.489327,-87.823147,31.478480,-87.807687,31.461861,-87.773344,31.458551,-87.763346,31.455386,-87.749314,31.453877,-87.746458,31.450972,-87.742927,31.436610,-87.708360,31.419593,-87.682282,31.416227,-87.679165,31.412095,-87.677153,31.402450,-87.655396,31.400740,-87.649170,31.398601,-87.645721,31.396055,-87.643196,31.392635,-87.641220,31.388886,-87.640340,31.385051,-87.640627,31.381432,-87.642056,31.377551,-87.645290,31.375219,-87.648820,31.373747,-87.652934,31.373241,-87.657363

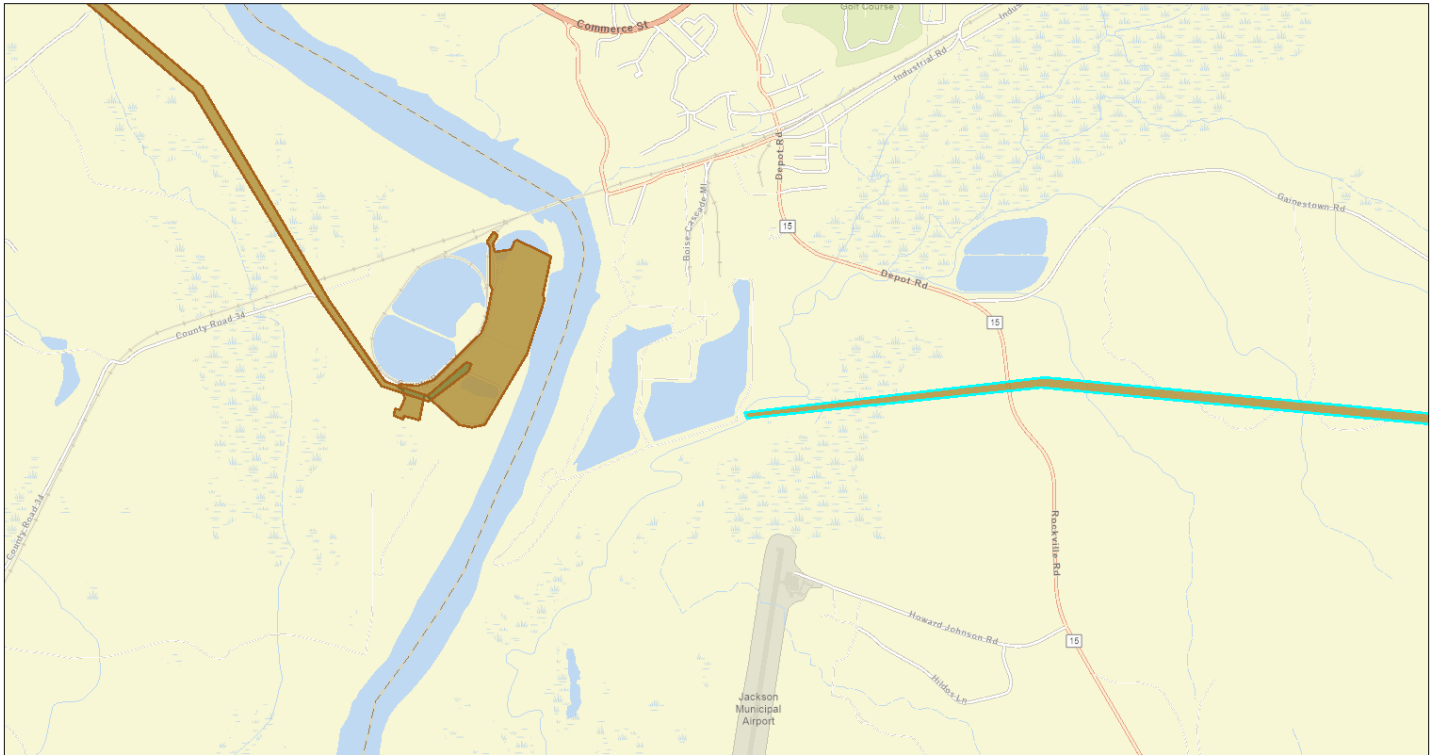
Project Area	45.88 sq mi
Within an Ozone 1-hr (1979 standard) Non-Attainment/Maintenance Area?	no
Within an Ozone 8-hr (1997 standard) Non-Attainment/Maintenance Area?	no
Within an Ozone 8-hr (2008 standard) Non-Attainment/Maintenance Area?	no
Within an Ozone 8-hr (2015 standard) Non-Attainment/Maintenance Area?	no
Within a Lead (2008 standard) Non-Attainment/Maintenance Area?	no
Within a SO2 1-hr (2010 standard) Non-Attainment/Maintenance Area?	no
Within a PM2.5 24hr (2006 standard) Non-Attainment/Maintenance Area?	no
Within a PM2.5 Annual (1997 standard) Non-Attainment/Maintenance Area?	no
Within a PM2.5 Annual (2012 standard) Non-Attainment/Maintenance Area?	no

Within a PM10 (1987 standard) Non-Attainment/Maintenance Area?	no
Within a CO Annual (1971 standard) Non-Attainment/Maintenance Area?	no
Within a NO2 Annual (1971 standard) Non-Attainment/Maintenance Area?	no
Within a Federal Land?	no
Within an impaired stream?	yes
Within an impaired waterbody?	no
Within a waterbody?	yes
Within a stream?	yes
Within an NWI wetland?	Available Online
Within a Brownfields site?	no
Within a Superfund site?	no
Within a Toxic Release Inventory (TRI) site?	yes
Within a water discharger (NPDES)?	yes
Within a hazardous waste (RCRA) facility?	yes
Within an air emission facility?	yes
Within a school?	yes
Within an airport?	yes
Within a hospital?	no
Within a designated sole source aquifer?	no
Within a historic property on the National Register of Historic Places?	no
Within a Chemical Data Reporting (CDR) site?	yes
Within a Land Cession Boundary?	yes
Within a tribal area (lower 48 states)?	no
Within the service area of a mitigation or conservation bank?	yes
Within the service area of an In-Lieu-Fee Program?	yes
Within a Public Property Boundary of the Formerly Used Defense Sites?	no
Within a Munitions Response Site?	no
Within an Essential Fish Habitat (EFH)?	no
Within a Habitat Area of Particular Concern (HAPC)?	no
Within an EFH Area Protected from Fishing (EFHA)?	no
Within a Bureau of Land Management Area of Critical Environmental Concern?	no
Within an ESA-designated Critical Habitat Area per U.S. Fish & Wildlife Service?	no
Within an ESA-designated Critical Habitat river, stream or water feature per U.S. Fish & Wildlife Service?	yes

Created on: 10/10/2025 12:36:42 PM

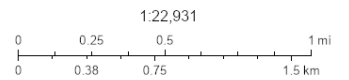
# NEPAssist Report

## LEC3 115-kV Study Area



October 10, 2025

LEC3 115-kV Study Area
  LEC3 Site
  lec3\_230kv\_studyarea
  lec3\_site
  lec3\_115kv\_studyarea



Sources: Esri, TomTom, Garmin, FAO, NOAA, USGS, (c) OpenStreetMap contributors, and the GIS User Community

Input Coordinates: 31.388226,-87.659824,31.388195,-87.657381,31.387758,-87.657390,31.387797,-87.659923,31.401522,-87.690852,31.408799,-87.694086,31.423679,-87.716724,31.438917,-87.753671,31.442105,-87.756914,31.444381,-87.768440,31.448413,-87.780621,31.466290,-87.817550,31.477560,-87.833594,31.483046,-87.851695,31.485290,-87.879687,31.483773,-87.896737,31.484057,-87.896836,31.485788,-87.879480,31.483544,-87.851426,31.478173,-87.834133,31.477583,-87.832696,31.466811,-87.817712,31.449095,-87.781294,31.444711,-87.768386,31.442373,-87.756663,31.439277,-87.753285,31.423939,-87.716355,31.409151,-87.693745,31.401798,-87.690574,31.388226,-87.659824

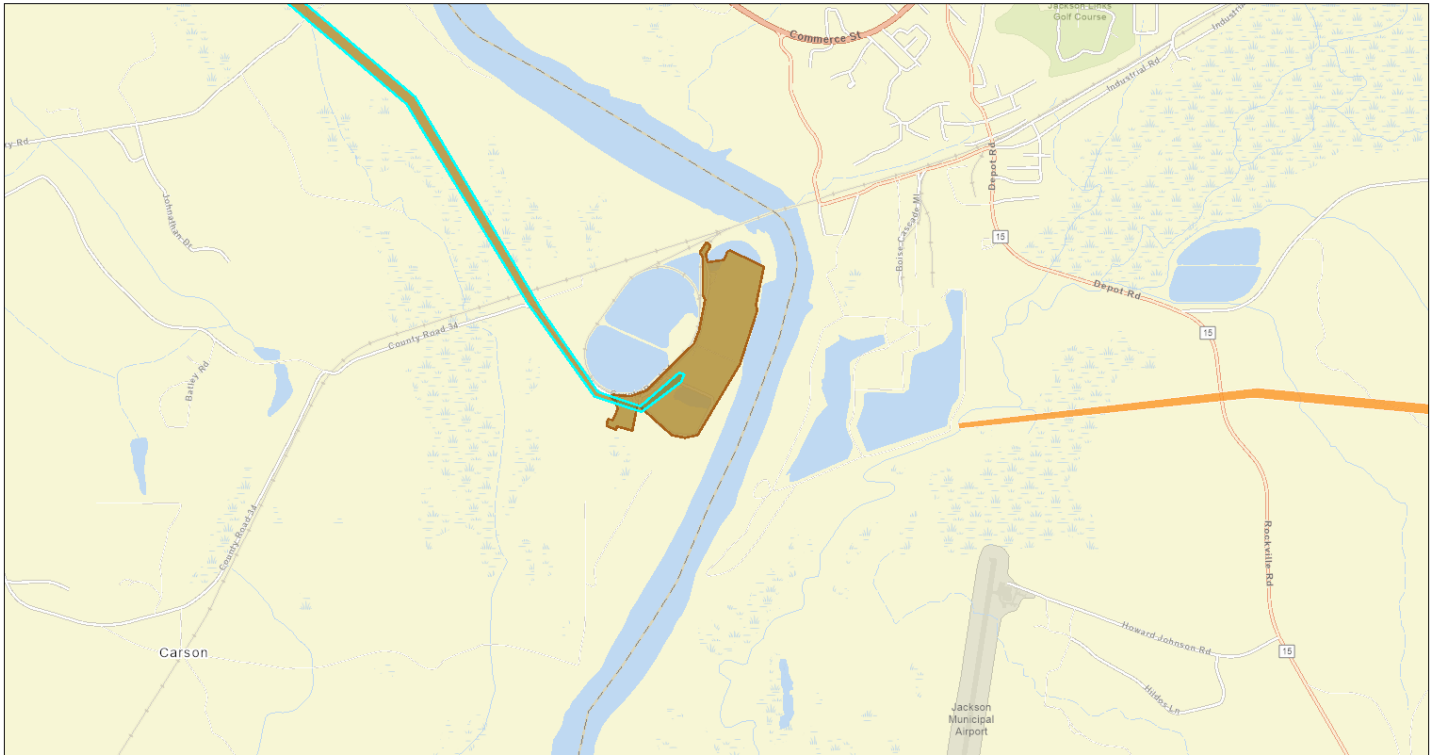
Project Area	0.45 sq mi
Within an Ozone 1-hr (1979 standard) Non-Attainment/Maintenance Area?	no
Within an Ozone 8-hr (1997 standard) Non-Attainment/Maintenance Area?	no
Within an Ozone 8-hr (2008 standard) Non-Attainment/Maintenance Area?	no
Within an Ozone 8-hr (2015 standard) Non-Attainment/Maintenance Area?	no
Within a Lead (2008 standard) Non-Attainment/Maintenance Area?	no
Within a SO2 1-hr (2010 standard) Non-Attainment/Maintenance Area?	no
Within a PM2.5 24hr (2006 standard) Non-Attainment/Maintenance Area?	no
Within a PM2.5 Annual (1997 standard) Non-Attainment/Maintenance Area?	no
Within a PM2.5 Annual (2012 standard) Non-Attainment/Maintenance Area?	no
Within a PM10 (1987 standard) Non-Attainment/Maintenance Area?	no
Within a CO Annual (1971 standard) Non-Attainment/Maintenance Area?	no
Within a NO2 Annual (1971 standard) Non-Attainment/Maintenance Area?	no
Within a Federal Land?	no
Within an impaired stream?	no
Within an impaired waterbody?	no

Within a waterbody?	yes
Within a stream?	yes
Within an NWI wetland?	Available Online
Within a Brownfields site?	no
Within a Superfund site?	no
Within a Toxic Release Inventory (TRI) site?	no
Within a water discharger (NPDES)?	no
Within a hazardous waste (RCRA) facility?	no
Within an air emission facility?	no
Within a school?	no
Within an airport?	no
Within a hospital?	no
Within a designated sole source aquifer?	no
Within a historic property on the National Register of Historic Places?	no
Within a Chemical Data Reporting (CDR) site?	no
Within a Land Cession Boundary?	yes
Within a tribal area (lower 48 states)?	no
Within the service area of a mitigation or conservation bank?	yes
Within the service area of an In-Lieu-Fee Program?	yes
Within a Public Property Boundary of the Formerly Used Defense Sites?	no
Within a Munitions Response Site?	no
Within an Essential Fish Habitat (EFH)?	no
Within a Habitat Area of Particular Concern (HAPC)?	no
Within an EFH Area Protected from Fishing (EFHA)?	no
Within a Bureau of Land Management Area of Critical Environmental Concern?	no
Within an ESA-designated Critical Habitat Area per U.S. Fish & Wildlife Service?	no
Within an ESA-designated Critical Habitat river, stream or water feature per U.S. Fish & Wildlife Service?	yes

Created on: 10/10/2025 12:42:56 PM

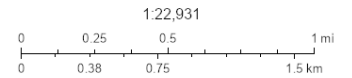
# NEPAssist Report

## LEC3 230-kV Study Area



October 10, 2025

- LEC3 230-kV Study Area
- LEC3 Site
- lec3\_site
- lec3\_230kv\_studyarea
- lec3\_115kv\_studyarea



Sources: Esri, TomTom, Garmin, FAO, NOAA, USGS, (c) OpenStreetMap contributors, and the GIS User Community

Input Coordinates: 31.519244,-87.954606,31.500143,-87.928223,31.489549,-87.920848,31.485581,-87.917641,31.484884,-87.915188,31.486539,-87.912943,31.486447,-87.912646,31.486064,-87.912844,31.484601,-87.915125,31.485359,-87.917847,31.489925,-87.921683,31.499783,-87.928717,31.513868,-87.948183,31.513339,-87.948911,31.517873,-87.955379,31.515721,-87.957589,31.515706,-87.957912,31.516188,-87.958523,31.516640,-87.958352,31.516341,-87.957777,31.519236,-87.955038,31.519244,-87.954606

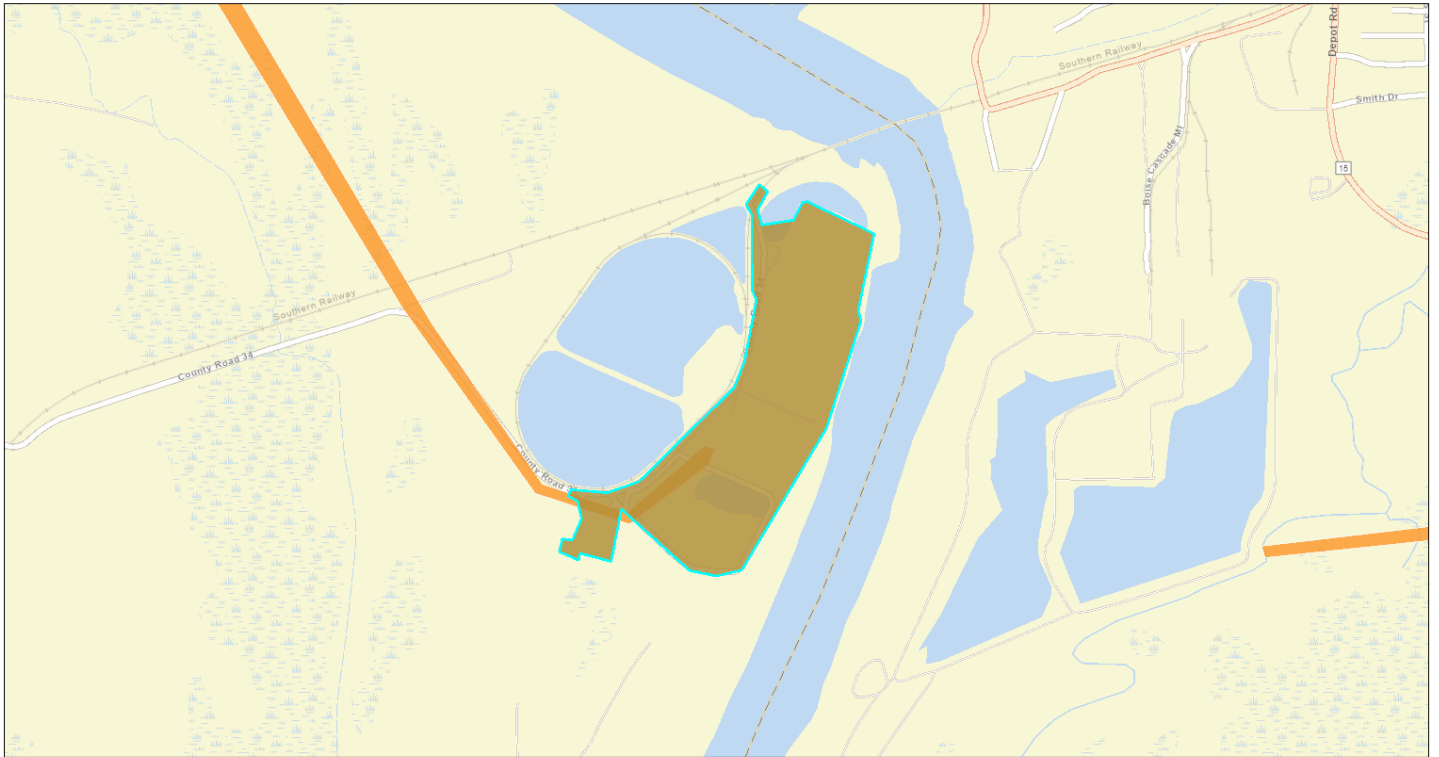
Project Area	0.16 sq mi
Within an Ozone 1-hr (1979 standard) Non-Attainment/Maintenance Area?	no
Within an Ozone 8-hr (1997 standard) Non-Attainment/Maintenance Area?	no
Within an Ozone 8-hr (2008 standard) Non-Attainment/Maintenance Area?	no
Within an Ozone 8-hr (2015 standard) Non-Attainment/Maintenance Area?	no
Within a Lead (2008 standard) Non-Attainment/Maintenance Area?	no
Within a SO2 1-hr (2010 standard) Non-Attainment/Maintenance Area?	no
Within a PM2.5 24hr (2006 standard) Non-Attainment/Maintenance Area?	no
Within a PM2.5 Annual (1997 standard) Non-Attainment/Maintenance Area?	no
Within a PM2.5 Annual (2012 standard) Non-Attainment/Maintenance Area?	no
Within a PM10 (1987 standard) Non-Attainment/Maintenance Area?	no
Within a CO Annual (1971 standard) Non-Attainment/Maintenance Area?	no
Within a NO2 Annual (1971 standard) Non-Attainment/Maintenance Area?	no
Within a Federal Land?	no
Within an impaired stream?	no
Within an impaired waterbody?	no
Within a waterbody?	yes

Within a stream?	yes
Within an NWI wetland?	Available Online
Within a Brownfields site?	no
Within a Superfund site?	no
Within a Toxic Release Inventory (TRI) site?	no
Within a water discharger (NPDES)?	no
Within a hazardous waste (RCRA) facility?	no
Within an air emission facility?	no
Within a school?	no
Within an airport?	no
Within a hospital?	no
Within a designated sole source aquifer?	no
Within a historic property on the National Register of Historic Places?	no
Within a Chemical Data Reporting (CDR) site?	no
Within a Land Cession Boundary?	yes
Within a tribal area (lower 48 states)?	no
Within the service area of a mitigation or conservation bank?	yes
Within the service area of an In-Lieu-Fee Program?	yes
Within a Public Property Boundary of the Formerly Used Defense Sites?	no
Within a Munitions Response Site?	no
Within an Essential Fish Habitat (EFH)?	no
Within a Habitat Area of Particular Concern (HAPC)?	no
Within an EFH Area Protected from Fishing (EFHA)?	no
Within a Bureau of Land Management Area of Critical Environmental Concern?	no
Within an ESA-designated Critical Habitat Area per U.S. Fish & Wildlife Service?	no
Within an ESA-designated Critical Habitat river, stream or water feature per U.S. Fish & Wildlife Service?	no

Created on: 10/10/2025 12:41:38 PM

# NEPAssist Report

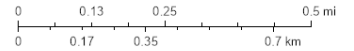
## LEC3 Site



October 10, 2025

- LEC3 Site
- lec3\_site
- lec3\_230kv\_studyarea
- lec3\_115kv\_studyarea

1:11,466



Sources: Esri, TomTom, Garmin, FAO, NOAA, USGS, (c) OpenStreetMap contributors, and the GIS User Community

Input Coordinates: 31.485298,-87.916895,31.485451,-87.916814,31.485375,-87.915763,31.485650,-87.914847,31.487971,-87.912089,31.488623,-87.911793,31.490124,-87.911451,31.490377,-87.911577,31.492238,-87.911586,31.492476,-87.911757,31.492981,-87.911362,31.492797,-87.911128,31.492353,-87.911415,31.491978,-87.911290,31.492100,-87.910373,31.492529,-87.910131,31.492560,-87.909987,31.491763,-87.908047,31.489871,-87.908505,31.489618,-87.908424,31.486960,-87.909430,31.483467,-87.911874,31.483321,-87.912601,31.483452,-87.913374,31.484969,-87.915359,31.483682,-87.915655,31.483881,-87.916554,31.483712,-87.916599,31.483919,-87.917156,31.484241,-87.917066,31.484202,-87.916778,31.484731,-87.916509,31.485168,-87.916626,31.485298,-87.916895

Project Area	0.13 sq mi
Within an Ozone 1-hr (1979 standard) Non-Attainment/Maintenance Area?	no
Within an Ozone 8-hr (1997 standard) Non-Attainment/Maintenance Area?	no
Within an Ozone 8-hr (2008 standard) Non-Attainment/Maintenance Area?	no
Within an Ozone 8-hr (2015 standard) Non-Attainment/Maintenance Area?	no
Within a Lead (2008 standard) Non-Attainment/Maintenance Area?	no
Within a SO2 1-hr (2010 standard) Non-Attainment/Maintenance Area?	no
Within a PM2.5 24hr (2006 standard) Non-Attainment/Maintenance Area?	no
Within a PM2.5 Annual (1997 standard) Non-Attainment/Maintenance Area?	no
Within a PM2.5 Annual (2012 standard) Non-Attainment/Maintenance Area?	no
Within a PM10 (1987 standard) Non-Attainment/Maintenance Area?	no
Within a CO Annual (1971 standard) Non-Attainment/Maintenance Area?	no
Within a NO2 Annual (1971 standard) Non-Attainment/Maintenance Area?	no
Within a Federal Land?	no
Within an impaired stream?	no

Within an impaired waterbody?	no
Within a waterbody?	yes
Within a stream?	no
Within an NWI wetland?	Available Online
Within a Brownfields site?	no
Within a Superfund site?	no
Within a Toxic Release Inventory (TRI) site?	yes
Within a water discharger (NPDES)?	yes
Within a hazardous waste (RCRA) facility?	yes
Within an air emission facility?	yes
Within a school?	no
Within an airport?	no
Within a hospital?	no
Within a designated sole source aquifer?	no
Within a historic property on the National Register of Historic Places?	no
Within a Chemical Data Reporting (CDR) site?	no
Within a Land Cession Boundary?	yes
Within a tribal area (lower 48 states)?	no
Within the service area of a mitigation or conservation bank?	no
Within the service area of an In-Lieu-Fee Program?	yes
Within a Public Property Boundary of the Formerly Used Defense Sites?	no
Within a Munitions Response Site?	no
Within an Essential Fish Habitat (EFH)?	no
Within a Habitat Area of Particular Concern (HAPC)?	no
Within an EFH Area Protected from Fishing (EFHA)?	no
Within a Bureau of Land Management Area of Critical Environmental Concern?	no
Within an ESA-designated Critical Habitat Area per U.S. Fish & Wildlife Service?	no
Within an ESA-designated Critical Habitat river, stream or water feature per U.S. Fish & Wildlife Service?	no

Created on: 10/10/2025 12:40:13 PM