

U.S. DEPARTMENT OF AGRICULTURE

Rural Development

Mana Solar, LLC: Notice of Availability of an Environmental Assessment

AGENCY: Rural Utilities Service, USDA

ACTION: Notice of Availability of an Environmental Assessment for public review

SUMMARY: The Rural Utilities Service (RUS) has issued an Environmental Assessment (EA) to meet its responsibilities under the National Environmental Policy Act (NEPA) and RUS's Environmental Policies and Procedures (7 CFR Part 1970) in relation to possible financial assistance for a proposed project by Mana Solar, LLC. The proposal is for construction of a solar generation facility in the Western District of American Samoa. Mana Solar, LLC has submitted an application to RUS for funding of the proposal. The proposed project would impact 30 acres of privately owned property.

Construction of the proposed project would enable Mana Solar, LLC to generate and distribute clean, renewable photovoltaic solar energy to the existing electrical grid for the County of Tualauta per an existing purchase power agreement with American Samoa Power Authority.

FOR FURTHER INFORMATION or to obtain copies of the EA, CONTACT:

[RUSPublicComments@usda.gov](mailto:RUSPublicComments@usda.gov) or, Suzanne Kopich, Environmental Protection Specialist, USDA, RUS, RD by phone at: 202-961-8514

SUPPLEMENTARY INFORMATION: The Proposed Action includes construction of a 13.37-megawatt (MW) direct current (DC)/ 10.2-MW alternating current (AC) solar generation facility, in the Western District of American Samoa. The proposed project is proposed to occur within three parcels of land previously used for agriculture in the village of Pava'ia'i, County of Tualauta, island of Tutuila, Territory of American Samoa. The proposed project consists of the installation of solar arrays. DC power generated by the arrays would be routed via underground cables to a fenced control area on an adjacent solar farm, where power would be transmitted to the local distribution grid via a 34.5-kilovolt transmission line owned and managed by the American Samoa Power Authority. The control area and transmission line are not included as part of Mana Solar, LLC's application for financial assistance.

SWCA Environmental Consultants, retained by Mana Solar, LLC, has prepared an EA for RUS that describes the proposed project, assesses the proposed project's environmental impacts, and summarizes any applicable any mitigation measures used to minimize environmental effects. RUS has conducted an independent evaluation of the environmental assessment and believes that it accurately assesses the impacts of the proposed project. No significant impacts are expected as a result of the construction of the project.

Written questions and comments should be emailed to RUS at: [RUSPublicComments@usda.gov](mailto:RUSPublicComments@usda.gov)

RUS will accept questions and comments on the environmental assessment for 14 days from the first date of publication of this notice. All comments must be provided electronically with no hard copy comments being accepted at this time.

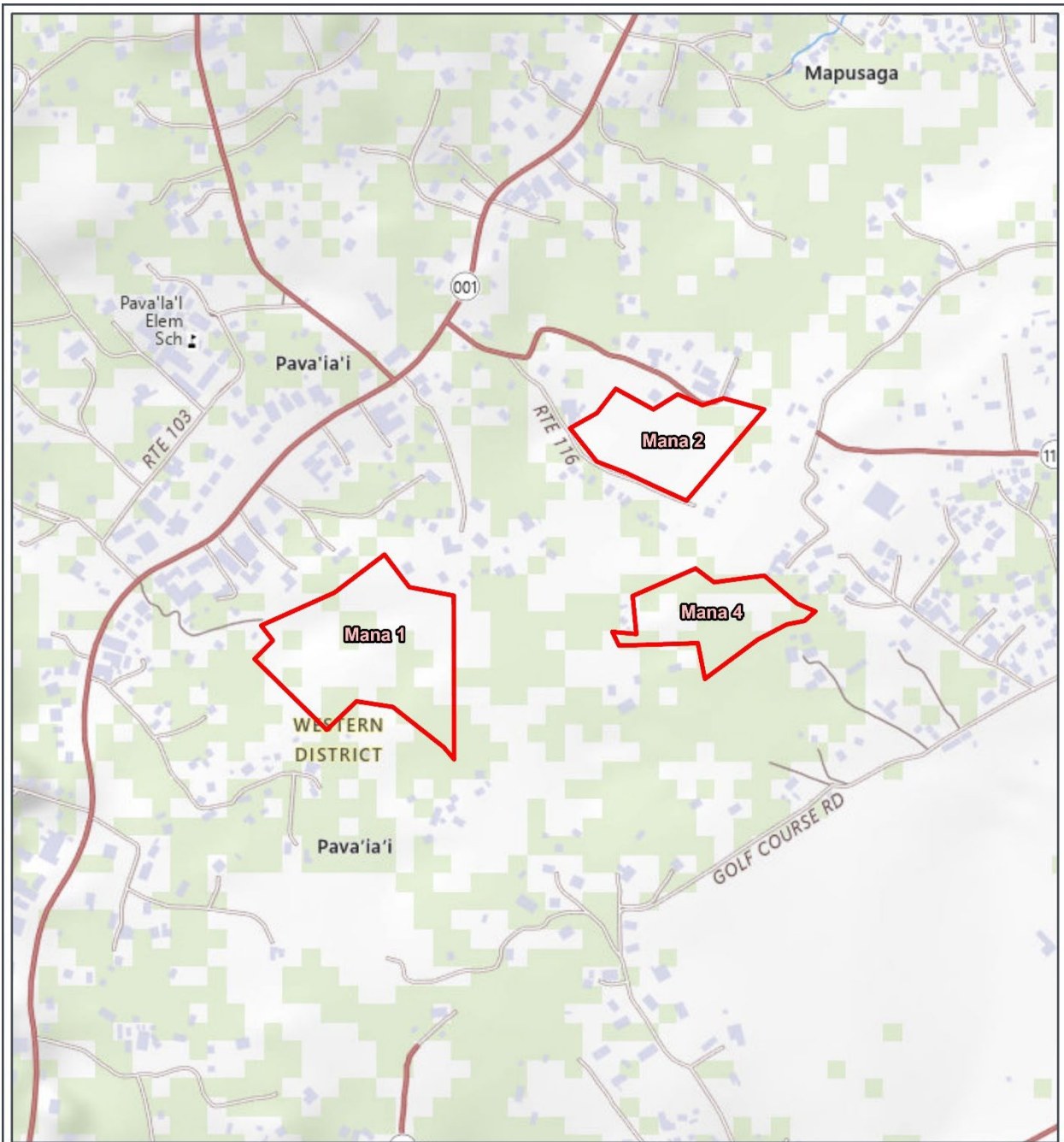
Copies of the Environmental Assessment and supporting documentation are available for public review at:

<https://www.rd.usda.gov/resources/environmental-studies/assessment/mana-solar-project>

Any final action by RUS related to the proposed project would be subject to, and contingent upon, compliance with all relevant Federal environmental laws and regulations and completion of environmental review procedures as prescribed by 7 CFR Part 1970, Environmental Policies and Procedures.

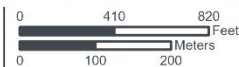
A general location map of the project is shown below.

Dated: XXXX



 Project Area

Tutuila Island, American Samoa  
NAD 1983 UTM Zone 2N



1:10,000



Base Map: ESRI ArcGIS Online,  
accessed May 2024  
Updated: 5/10/2024  
Project No. 85241  
Layout: 85241 Fig 3 Project Component  
Overview Topo

**SWCA**  
ENVIRONMENTAL CONSULTANTS