

Sheet Map Index

Legend

Project Feature

- Project (Red line)

Highway

- Interstate Highway (Thick red line with shield)
- US Highway (Red line with shield)
- State Highway (Grey line with shield)

Jurisdiction

- City or Village (Solid brown fill)
- Town (Dashed red outline)

Scale

0 1 Miles

Data Sources: WDNr, WisDOT, BTS, USGS, and Census
Map Date: April 2016
Name: Q1_South_Sheetmap_Overview_160418
MXD: P:\2013\628210_Dairyland Q1 Rebuild\06 GIS\3 Layout
Q1_South\Q1_South_160418
Map: P:\2013\628210_Dairyland Q1 Rebuild\06 GIS\1 Maps
Q1_South\Q1_South_160418

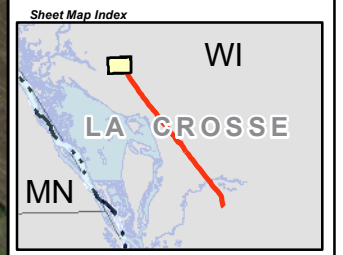
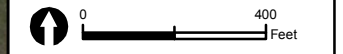


Briggs Road Substation to La Crosse Tap 161 kV Transmission Line (Q-1D South) Rebuild Project (RUS #1060)

La Crosse County, Wisconsin

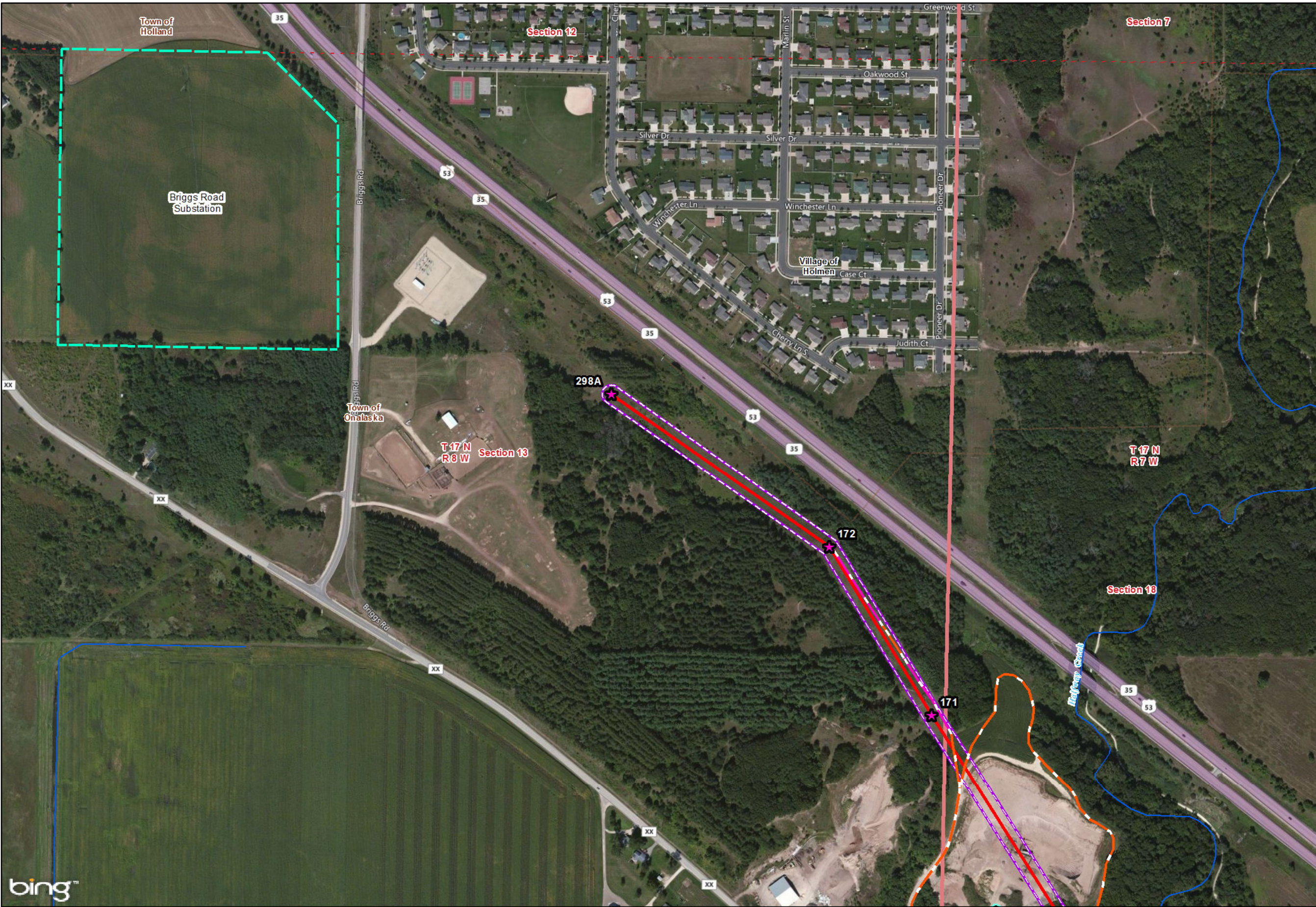
Appendix A
Q-1D South Rebuild Project Overview Map
April 2016

- Legend**
- Project Centerline**
 - Single Circuit
 - Double Circuit
 - Project Feature**
 - Single Pole Steel
 - Y-Frame Steel
 - H-Frame Steel Deadend
 - Right-of-Way
 - Briggs Road Substation
 - Access Route - No Grading Required
 - Access Route - Grading Required
 - Temporary Clear Span Bridge
 - Staging Area
 - Water Feature**
 - Waterbody
 - Field Sketched Waterway
 - Delineated Wetland
 - WDNR 24K Hydrography**
 - Intermittent Stream
 - Perennial Stream
 - Jurisdiction**
 - County
 - Township
 - Section
 - City, Village or Town
 - Federal Land
 - State Land



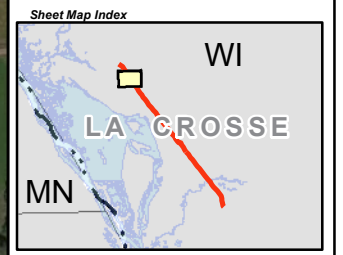
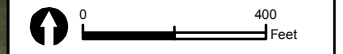
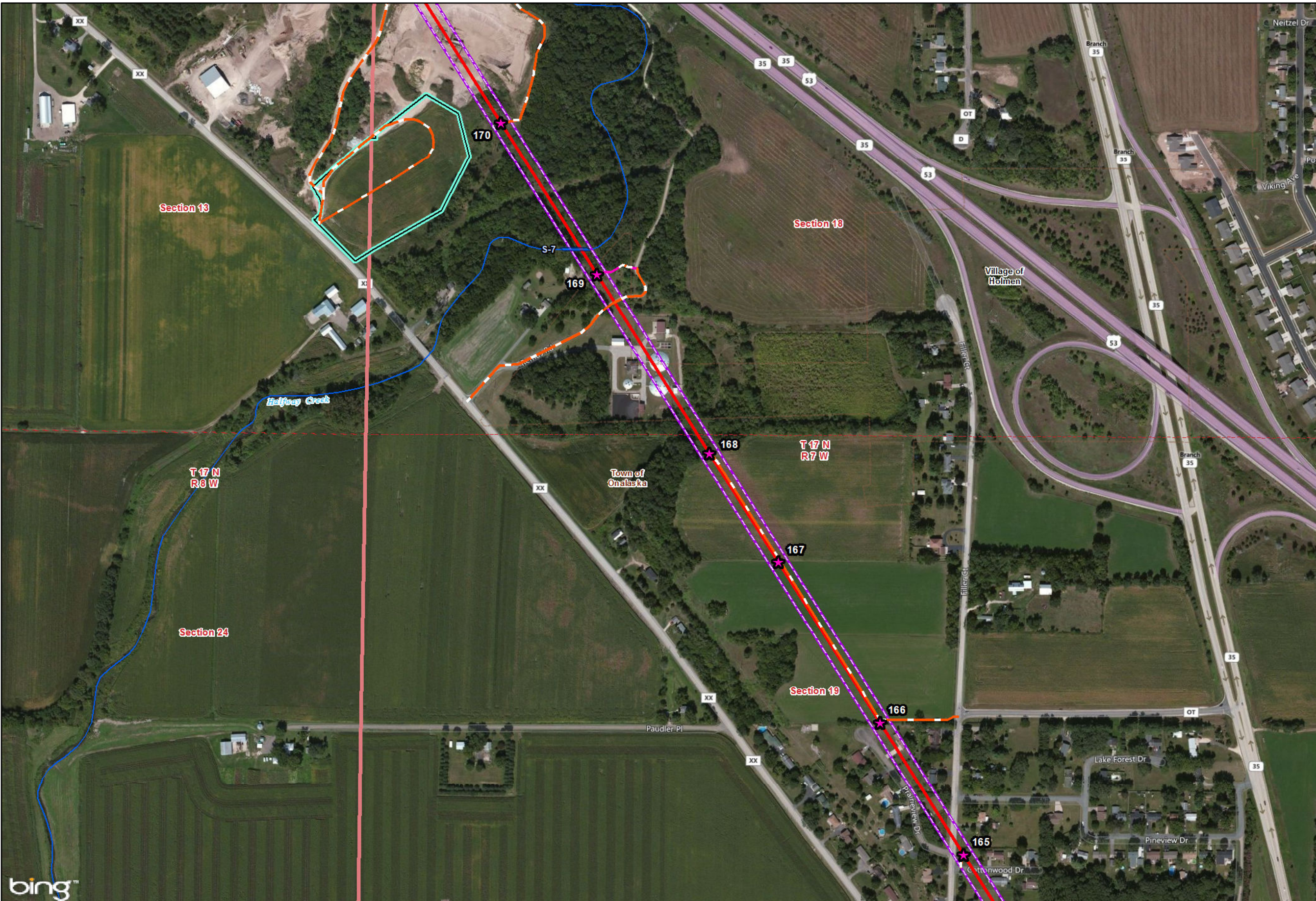
Data Sources: WDNR, WisDOT, BTS, Census, and Dairyland Power
 Map Date: April 2016
 Name: Q1_South_SheetMap_160418
 MXD: Y:\2013\02\02\Q1_South\Q1_South_150326_160418.mxd
 Q1_South_150326_160418
 Q1_South_150326_160418

Aerial Photography Published by Microsoft Bing Maps



**Briggs Road Substation to La Crosse Tap 161 kV
 Transmission Line (Q-1D South) Rebuild Project (RUS #1060)**
 La Crosse County, Wisconsin

- Legend**
- Project Centerline**
 - Single Circuit
 - Double Circuit
 - Project Feature**
 - Single Pole Steel
 - Y-Frame Steel
 - H-Frame Steel Deadend
 - Right-of-Way
 - Briggs Road Substation
 - Access Route - No Grading Required
 - Access Route - Grading Required
 - Temporary Clear Span Bridge
 - Staging Area
 - Water Feature**
 - Waterbody
 - Field Sketched Waterway
 - Delineated Wetland
 - WDNR 24K Hydrography**
 - Intermittent Stream
 - Perennial Stream
 - Jurisdiction**
 - County
 - Township
 - Section
 - City, Village or Town
 - Federal Land
 - State Land



Data Sources: WDNR, WisDOT, BTS, Census, and Dairyland Power
 Map Date: April 2016
 Name: Q1_South_SheetMap_160418
 MXD: Y:\2013\02\02\20_Dairyland Q1_Rebuild\06 GIS\6.3 Layout\Q1_South
 Q1_South_Revise_150326
 Y:\2013\02\02\20_Dairyland Q1_Rebuild\06 GIS\6.1 Maps\Q1_South
 Q1_South_Revise_150326

Aerial Photography Published by Microsoft Bing Maps

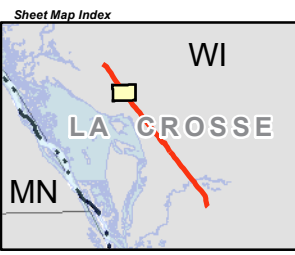
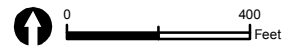


**Briggs Road Substation to La Crosse Tap 161 kV
 Transmission Line (Q-1D South) Rebuild Project (RUS #1060)**
 La Crosse County, Wisconsin

Appendix A
 Q-1D South Rebuild Project Mapbook
 April 2016

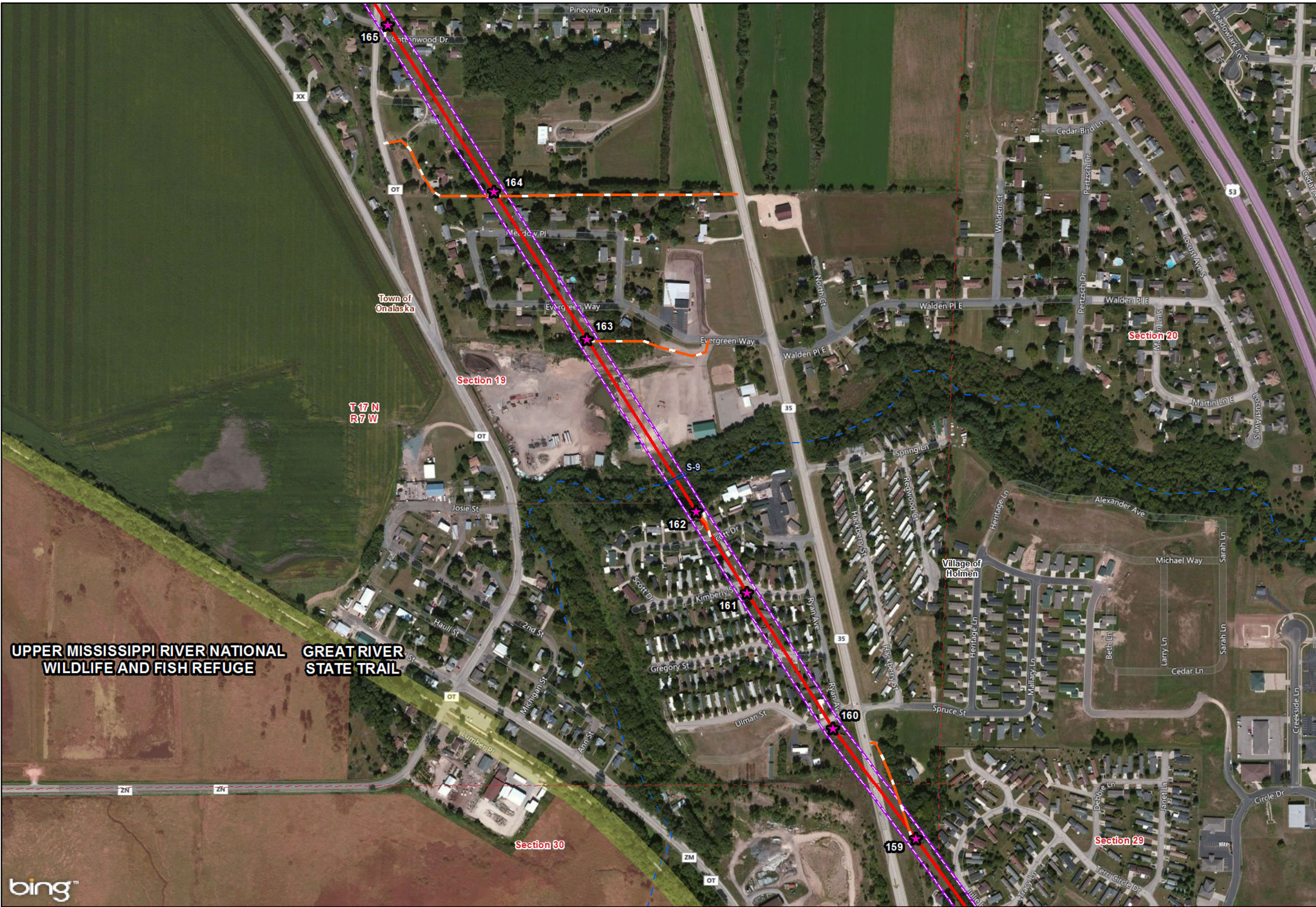
Legend

- Project Centerline**
 - Single Circuit
 - Double Circuit
- Project Feature**
 - Single Pole Steel
 - Y-Frame Steel
 - H-Frame Steel Deadend
 - Right-of-Way
 - Briggs Road Substation
 - Access Route - No Grading Required
 - Access Route - Grading Required
 - Temporary Clear Span Bridge
 - Staging Area
- Water Feature**
 - Waterbody
 - Field Sketched Waterway
 - Delineated Wetland
- WDNR 24K Hydrography**
 - Intermittent Stream
 - Perennial Stream
- Jurisdiction**
 - County
 - Township
 - Section
 - City, Village or Town
 - Federal Land
 - State Land



Data Sources: WDNR, WisDOT, BTS, Census, and Dairyland Power
 Map Date: April 2016
 Name: Q1_South_SheetMap_160418
 MXD: Y:\2013\02\02\Q1_Dairyland\Q1_Rebuild\06 GIS\6.3 Layout\Q1_South_Q1_South_Revise_150326
 Y:\2013\02\02\Q1_Dairyland\Q1_Rebuild\06 GIS\6.1 Maps\Q1_South_Q1_South_Revise_150326

Aerial Photography Published by Microsoft Bing Maps



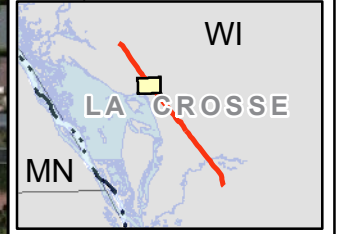
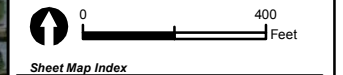
UPPER MISSISSIPPI RIVER NATIONAL WILDLIFE AND FISH REFUGE
 GREAT RIVER STATE TRAIL



Briggs Road Substation to La Crosse Tap 161 kV Transmission Line (Q-1D South) Rebuild Project (RUS #1060)
 La Crosse County, Wisconsin

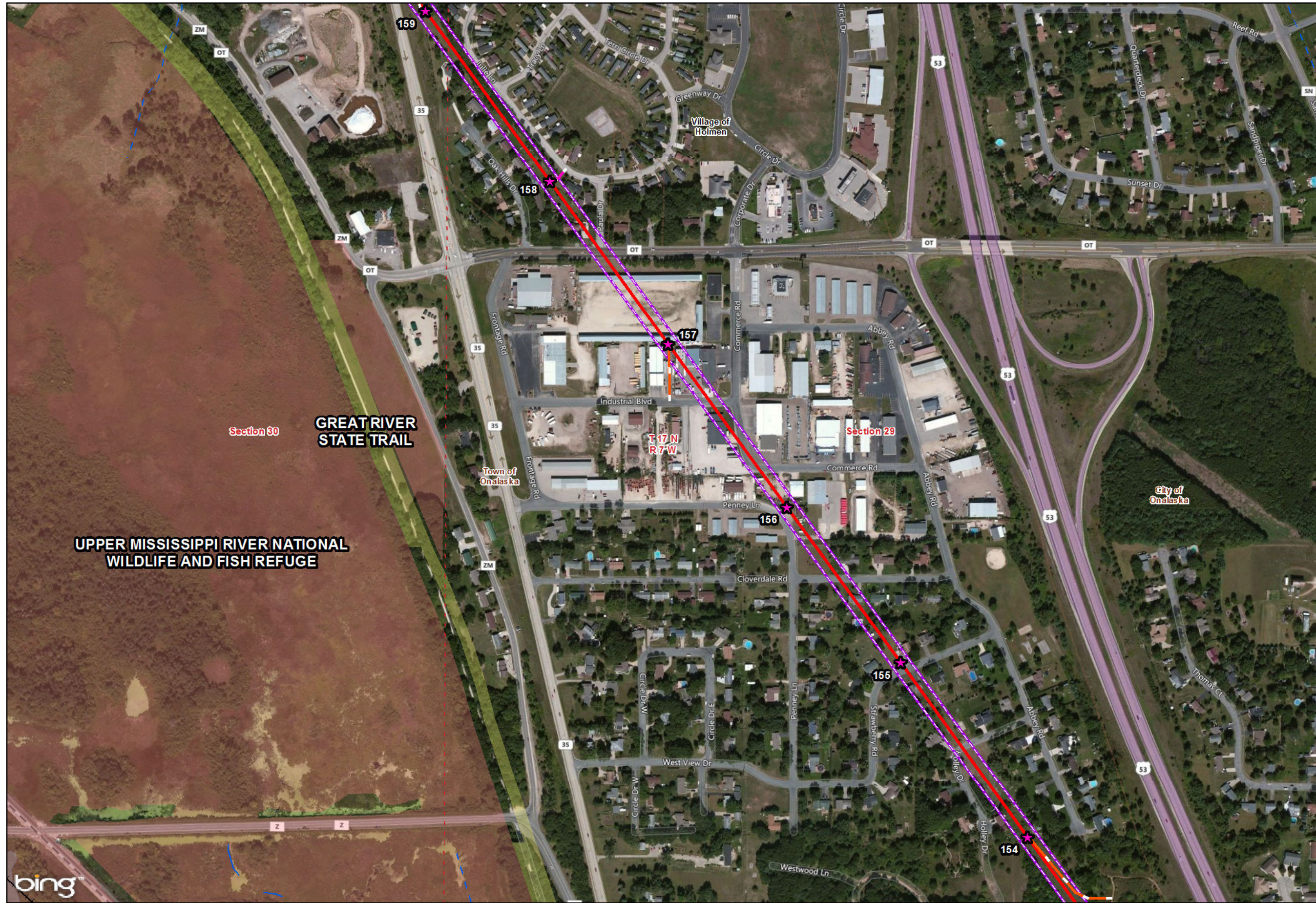
Appendix A
 Q-1D South Rebuild Project Mapbook
 April 2016

- Legend**
- Project Centerline**
 - Single Circuit
 - Double Circuit
 - Project Feature**
 - Single Pole Steel
 - Y-Frame Steel
 - H-Frame Steel Deadend
 - Right-of-Way
 - Briggs Road Substation
 - Access Route - No Grading Required
 - Access Route - Grading Required
 - Temporary Clear Span Bridge
 - Staging Area
 - Water Feature**
 - Waterbody
 - Field Sketched Waterway
 - Delineated Wetland
 - WDNR 24K Hydrography**
 - Intermittent Stream
 - Perennial Stream
 - Jurisdiction**
 - County
 - Township
 - Section
 - City, Village or Town
 - Federal Land
 - State Land



Data Sources: WDNR, WisDOT, BTS, Census, and Dairyland Power
 Map Date: April 2016
 Name: Q1_South_Sheetmap_160418
 MKD: Y:20130202010_Dairyland Q1 Rebuild06 GIS/6.1 Layout/Q1_South
 Q1_South_Revise_150326
 Y:20130202010_Dairyland Q1 Rebuild06 GIS/6.1 Maps/Q1_South
 Q1_South_Revise_150326

Aerial Photography Published by Microsoft Bing Maps

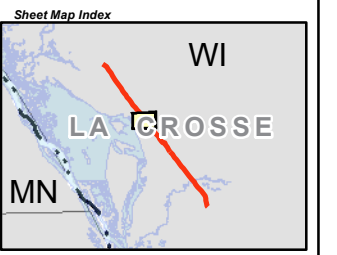


**Briggs Road Substation to La Crosse Tap 161 kV
 Transmission Line (Q-1D South) Rebuild Project (RUS #1060)**
 La Crosse County, Wisconsin

Appendix A
 Q-1D South Rebuild Project Mapbook
 April 2016

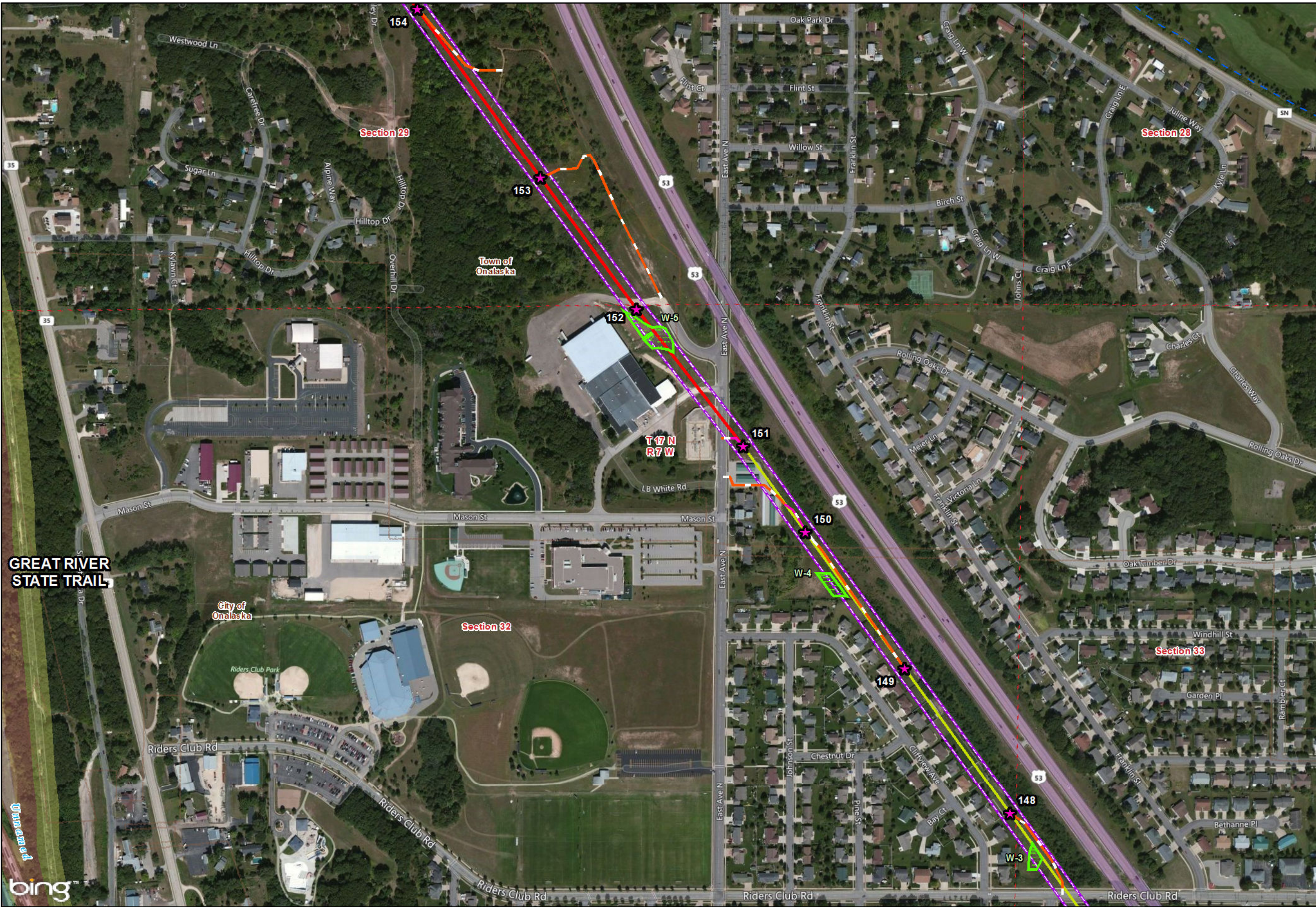
Legend

- Project Centerline**
 - Single Circuit
 - Double Circuit
- Project Feature**
 - Single Pole Steel
 - Y-Frame Steel
 - H-Frame Steel Deadend
 - Right-of-Way
 - Briggs Road Substation
 - Access Route - No Grading Required
 - Access Route - Grading Required
 - Temporary Clear Span Bridge
 - Staging Area
- Water Feature**
 - Waterbody
 - Field Sketched Waterway
 - Delineated Wetland
- WDNR 24K Hydrography**
 - Intermittent Stream
 - Perennial Stream
- Jurisdiction**
 - County
 - Township
 - Section
 - City, Village or Town
 - Federal Land
 - State Land



Data Sources: WDNR, WisDOT, BTS, Census, and Dairyland Power
 Map Date: April 2016
 Name: Q1_South_Sheetmap_160418
 MKD: Y120136028210_Dairyland Q1_Rebuild06 GIS/6.3 Layout/Q1_South
 Q1_South_Revise_150326
 Y120136028210_Dairyland Q1_Rebuild06 GIS/6.1 Maps/Q1_South
 Q1_South_Revise_150326

Aerial Photography Published by Microsoft Bing Maps

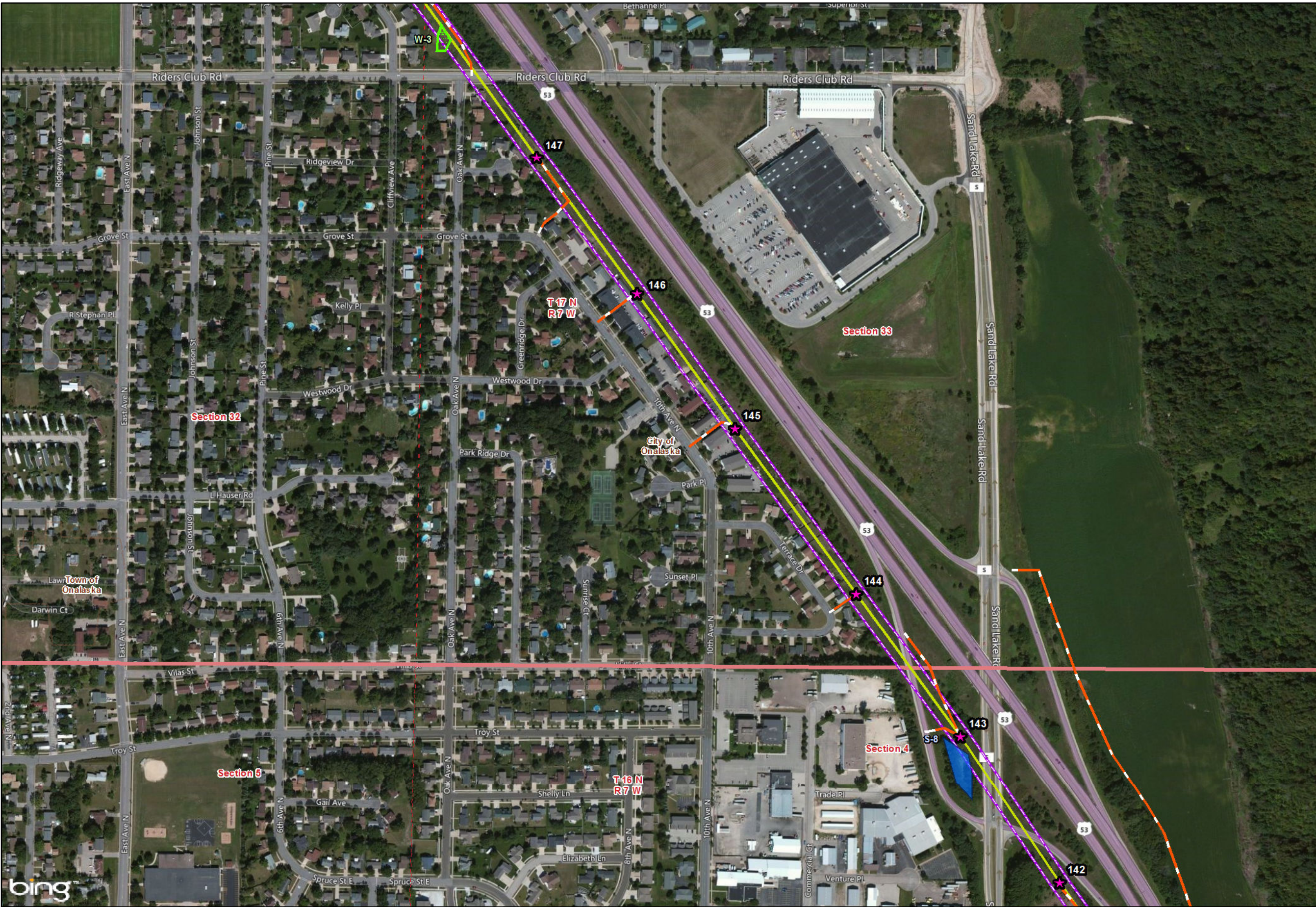


GREAT RIVER STATE TRAIL

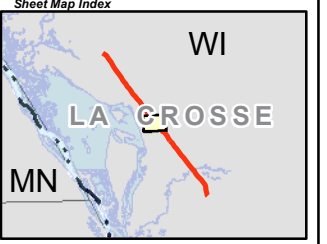
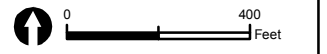


**Briggs Road Substation to La Crosse Tap 161 kV
 Transmission Line (Q-1D South) Rebuild Project (RUS #1060)**
 La Crosse County, Wisconsin

Appendix A
 Q-1D South Rebuild Project Mapbook
 April 2016



- Legend**
- Project Centerline**
 - Single Circuit
 - Double Circuit
 - Project Feature**
 - Single Pole Steel
 - Y-Frame Steel
 - H-Frame Steel Deadend
 - Right-of-Way
 - Briggs Road Substation
 - Access Route - No Grading Required
 - Access Route - Grading Required
 - Temporary Clear Span Bridge
 - Staging Area
 - Water Feature**
 - Waterbody
 - Field Sketched Waterway
 - Delineated Wetland
 - WDNR 24K Hydrography**
 - Intermittent Stream
 - Perennial Stream
 - Jurisdiction**
 - County
 - Township
 - Section
 - City, Village or Town
 - Federal Land
 - State Land



Data Sources: WDNR, WisDOT, BTS, Census, and Dairyland Power
 Map Date: April 2016
 Name: Q1_South_Sheetmap_160418
 MXD: Y:\2013\02\02\Q1_South\Q1_South\Q1_South_Layout01_South
 Q1_South_Revise_150326
 Y:\2013\02\02\Q1_South\Q1_South\Q1_South_Revise_150326

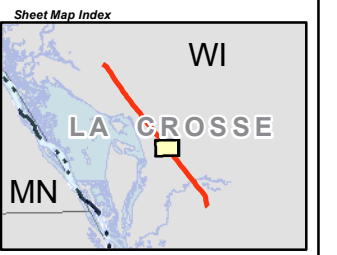
Aerial Photography Published by Microsoft Bing Maps



Briggs Road Substation to La Crosse Tap 161 kV Transmission Line (Q-1D South) Rebuild Project (RUS #1060)
 La Crosse County, Wisconsin

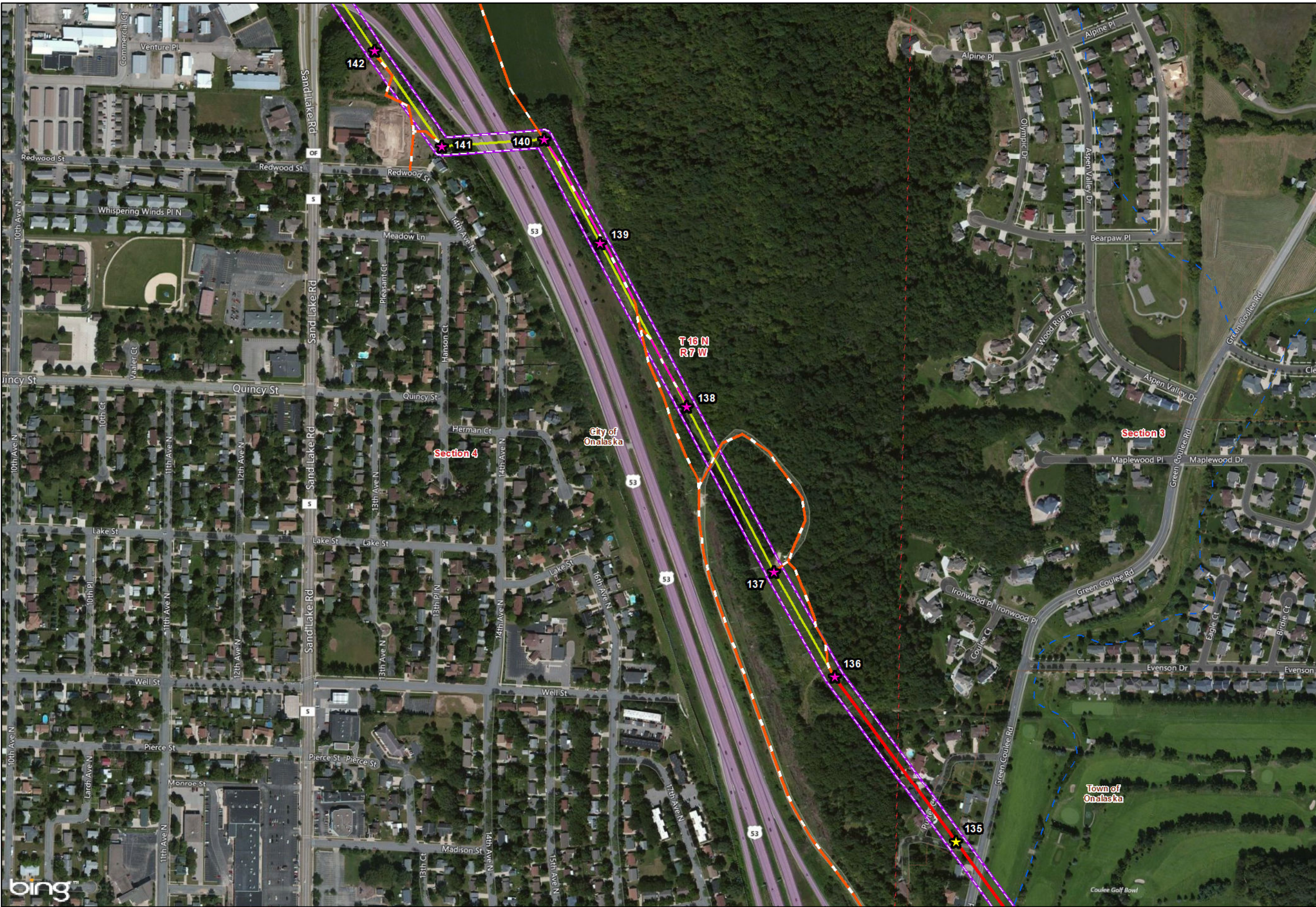
Legend

- Project Centerline**
- Single Circuit
- Double Circuit
- Project Feature**
- ★ Single Pole Steel
- ★ Y-Frame Steel
- ★ H-Frame Steel Deadend
- Right-of-Way
- Briggs Road Substation
- Access Route - No Grading Required
- Access Route - Grading Required
- Temporary Clear Span Bridge
- Staging Area
- Water Feature**
- Waterbody
- Field Sketched Waterway
- Delineated Wetland
- WDNR 24K Hydrography**
- Intermittent Stream
- Perennial Stream
- Jurisdiction**
- County
- Township
- Section
- City, Village or Town
- Federal Land
- State Land

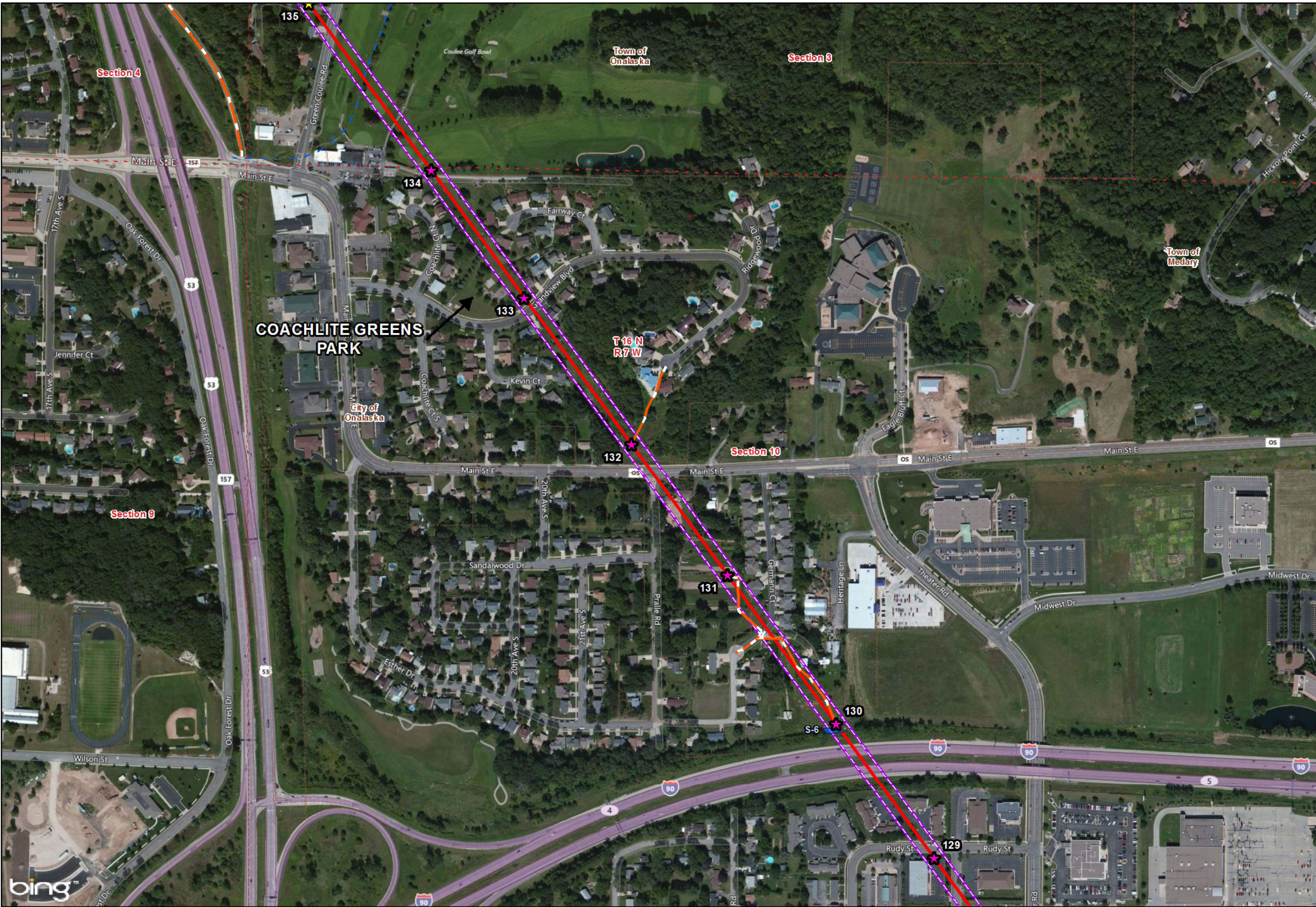


Data Sources: WDNR, WisDOT, BTS, Census, and Dairyland Power
 Map Date: April 2016
 Name: Q1_South_SheetMap_160418
 MKD: Y1201360280270_Dairyland Q1 Rebuild06 GIS/6.3 Layout/Q1_South
 Q1_South_Revise_150326
 Y1201360280270_Dairyland Q1 Rebuild06 GIS/6.1 Maps/Q1_South
 Q1_South_Revise_150326

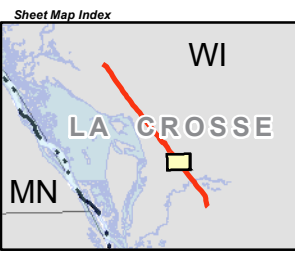
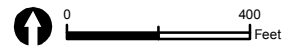
Aerial Photography Published by Microsoft Bing Maps



**Briggs Road Substation to La Crosse Tap 161 kV
 Transmission Line (Q-1D South) Rebuild Project (RUS #1060)**
 La Crosse County, Wisconsin



- Legend**
- Project Centerline**
 - Single Circuit
 - Double Circuit
 - Project Feature**
 - Single Pole Steel
 - Y-Frame Steel
 - H-Frame Steel Deadend
 - Right-of-Way
 - Briggs Road Substation
 - Access Route - No Grading Required
 - Access Route - Grading Required
 - Temporary Clear Span Bridge
 - Staging Area
 - Water Feature**
 - Waterbody
 - Field Sketched Waterway
 - Delineated Wetland
 - WDNR 24K Hydrography**
 - Intermittent Stream
 - Perennial Stream
 - Jurisdiction**
 - County
 - Township
 - Section
 - City, Village or Town
 - Federal Land
 - State Land



Data Sources: WDNR, WisDOT, BTS, Census, and Dairyland Power
 Map Date: April 2016
 Name: Q1_South_Sheetmap_160418
 MXD: Y:\2013\02\02\Q1_South\Q1_South\Map\Q1_South_150326
 Y:\2013\02\02\Q1_South\Q1_South\Map\Q1_South_150326

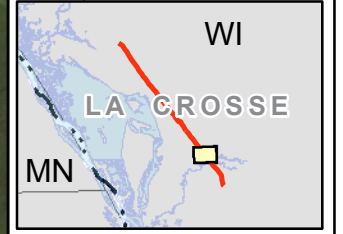
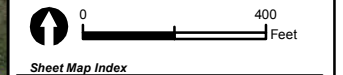
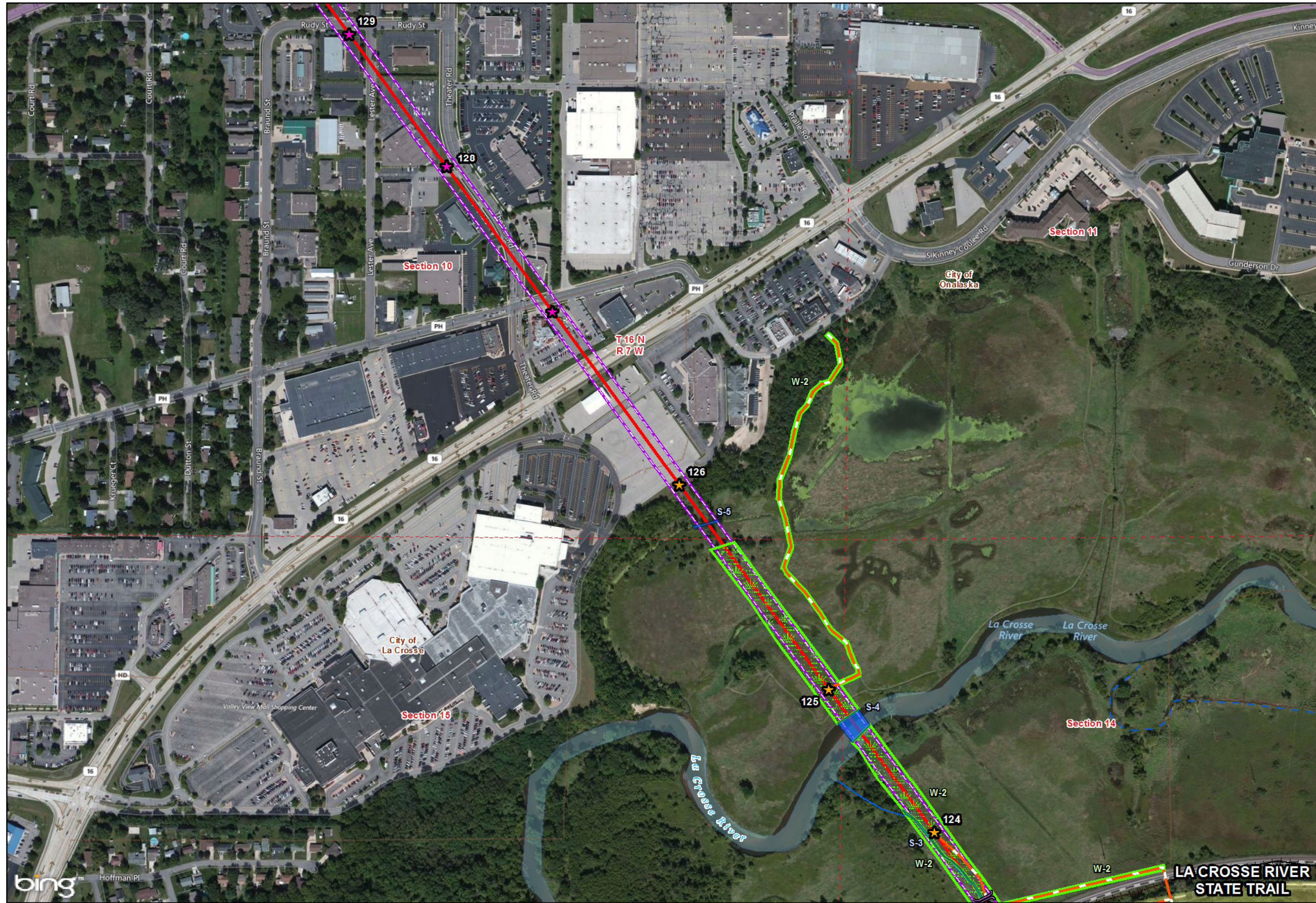
Aerial Photography Published by Microsoft Bing Maps



Briggs Road Substation to La Crosse Tap 161 kV Transmission Line (Q-1D South) Rebuild Project (RUS #1060)
 La Crosse County, Wisconsin

Appendix A
 Q-1D South Rebuild Project Mapbook
 April 2016

- Legend**
- Project Centerline**
 - Single Circuit
 - Double Circuit
 - Project Feature**
 - Single Pole Steel
 - Y-Frame Steel
 - H-Frame Steel Deadend
 - Right-of-Way
 - Briggs Road Substation
 - Access Route - No Grading Required
 - Access Route - Grading Required
 - Temporary Clear Span Bridge
 - Staging Area
 - Water Feature**
 - Waterbody
 - Field Sketched Waterway
 - Delineated Wetland
 - WDNR 24K Hydrography**
 - Intermittent Stream
 - Perennial Stream
 - Jurisdiction**
 - County
 - Township
 - Section
 - City, Village or Town
 - Federal Land
 - State Land

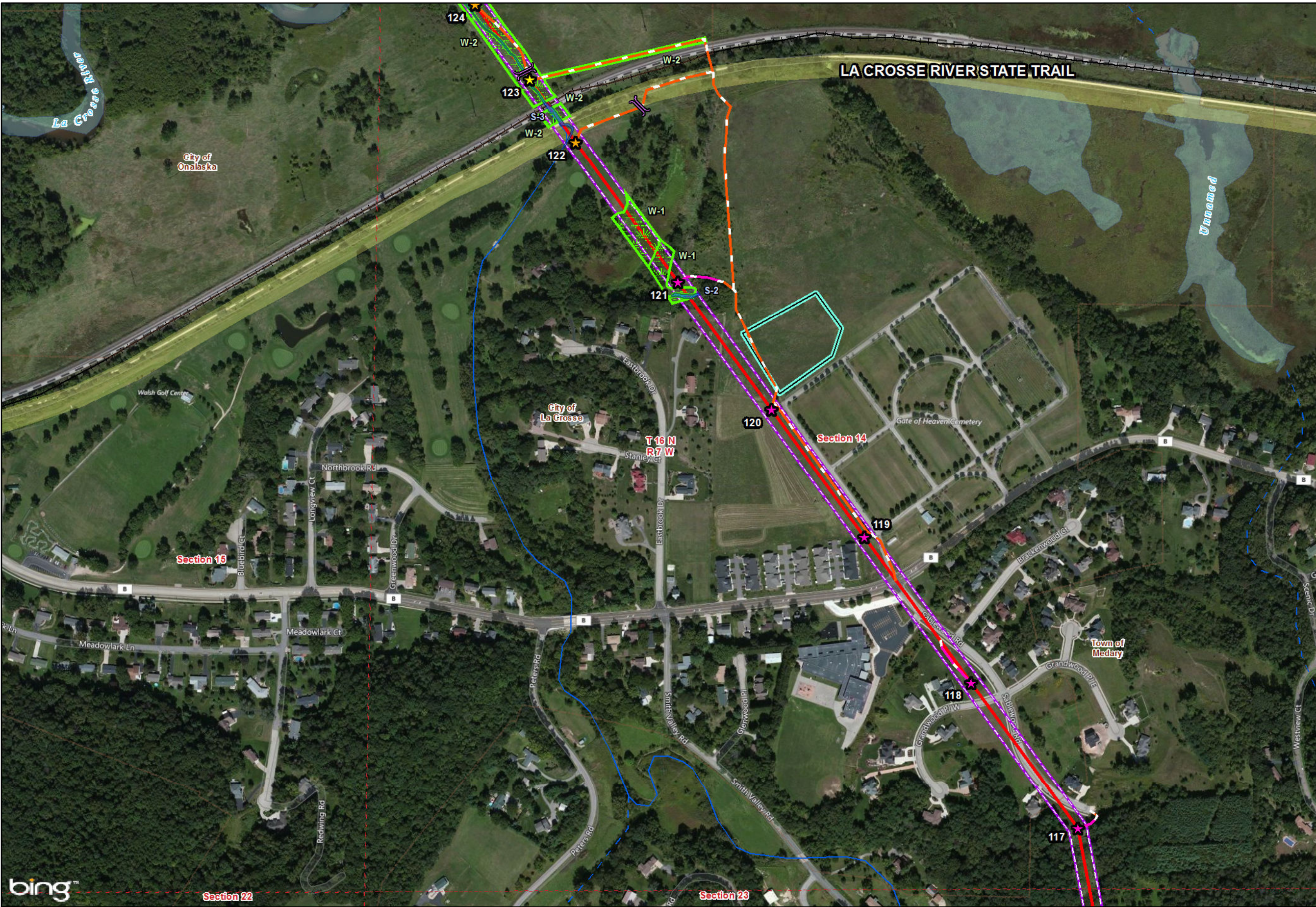


Data Sources: WDNR, WisDOT, BTS, Census, and Dairyland Power
 Map Date: April 2016
 Name: Q1_South_Sheetmap_160418
 MKD: Y:20136028020_Dairyland Q1 Rebuild06 GIS/6.3 LayoutQ1_South
 Q1_South_Revise_150326
 Y:20136028020_Dairyland Q1 Rebuild06 GIS/6.1 Maps/Q1_South
 Q1_South_Revise_150326

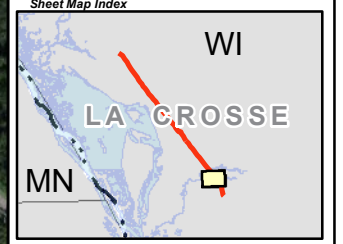
Aerial Photography Published by Microsoft Bing Maps



Briggs Road Substation to La Crosse Tap 161 kV Transmission Line (Q-1D South) Rebuild Project (RUS #1060)
 La Crosse County, Wisconsin



- Legend**
- Project Centerline**
 - Single Circuit
 - Double Circuit
 - Project Feature**
 - Single Pole Steel
 - Y-Frame Steel
 - H-Frame Steel Deadend
 - Right-of-Way
 - Briggs Road Substation
 - Access Route - No Grading Required
 - Access Route - Grading Required
 - Temporary Clear Span Bridge
 - Staging Area
 - Water Feature**
 - Waterbody
 - Field Sketched Waterway
 - Delineated Wetland
 - WDNR 24K Hydrography**
 - Intermittent Stream
 - Perennial Stream
 - Jurisdiction**
 - County
 - Township
 - Section
 - City, Village or Town
 - Federal Land
 - State Land



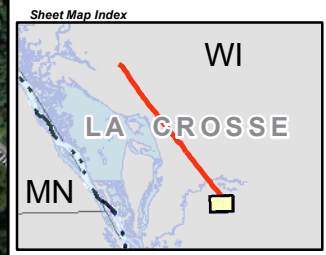
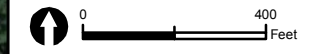
Data Sources: WDNR, WisDOT, BTS, Census, and Dairyland Power
 Map Date: April 2016
 Name: Q1_South_Sheetmap_160418
 MXD: Y:\2013\201302\2013_Dairyland Q1_Rebuild\06 GIS\6.3 Layout\Q1_South_Q1_South_Revise_150326
 Y:\2013\201302\2013_Dairyland Q1_Rebuild\06 GIS\6.1 Maps\Q1_South_Q1_South_Revise_150326

Aerial Photography Published by Microsoft Bing Maps



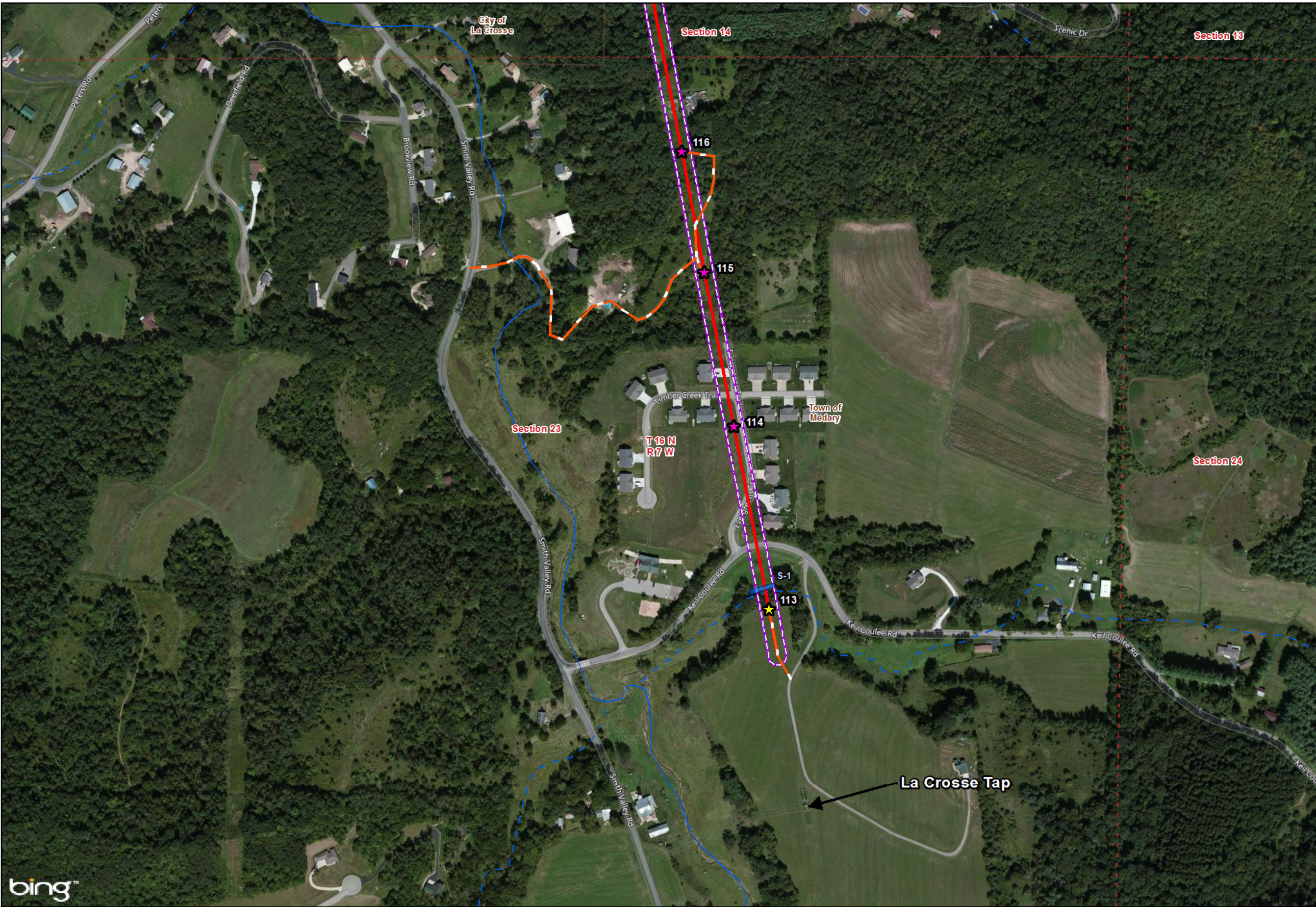
Briggs Road Substation to La Crosse Tap 161 kV Transmission Line (Q-1D South) Rebuild Project (RUS #1060)
 La Crosse County, Wisconsin

- Legend**
- Project Centerline**
 - Single Circuit
 - Double Circuit
 - Project Feature**
 - Single Pole Steel
 - Y-Frame Steel
 - H-Frame Steel Deadend
 - Right-of-Way
 - Briggs Road Substation
 - Access Route - No Grading Required
 - Access Route - Grading Required
 - Temporary Clear Span Bridge
 - Staging Area
 - Water Feature**
 - Waterbody
 - Field Sketched Waterway
 - Delineated Wetland
 - WDNR 24K Hydrography**
 - Intermittent Stream
 - Perennial Stream
 - Jurisdiction**
 - County
 - Township
 - Section
 - City, Village or Town
 - Federal Land
 - State Land



Data Sources: WDNR, WisDOT, BTS, Census, and Dairyland Power
 Map Date: April 2016
 Name: Q1_South_Sheetmap_160418
 MKD: Y:201360280210_Dairyland Q1 Rebuild06 GIS/6.3 Layout/Q1_South
 Q1_South_Revised_150326
 Y:201360280210_Dairyland Q1 Rebuild06 GIS/6.1 Maps/Q1_South
 Q1_South_Revised_150326

Aerial Photography Published by Microsoft Bing Maps



bing™



**Briggs Road Substation to La Crosse Tap 161 kV
 Transmission Line (Q-1D South) Rebuild Project (RUS #1060)**
 La Crosse County, Wisconsin

Appendix A
 Q-1D South Rebuild Project Mapbook
 April 2016

