

Project Location

Legend

- | | |
|------------------------|-----------------------|
| Project Feature | Transportation |
| Project Centerline | Interstate Highway |
| Jurisdiction | US Highway |
| State | State Highway |



Data Sources: DPC, ESRI, WisDOT.
 Map Date: April 2016
 Name: Fig1_Q1_South_ProjLocation_180418
 P:\2013\02\80210_Dairyland\Q1 Rebuild\06 GIS\6.3 Layout
 Q1_South\Q1_South_160418
 P:\2013\02\80210_Dairyland\Q1 Rebuild\06 GIS\6.1 Maps
 Q1_South\Q1_South_160418

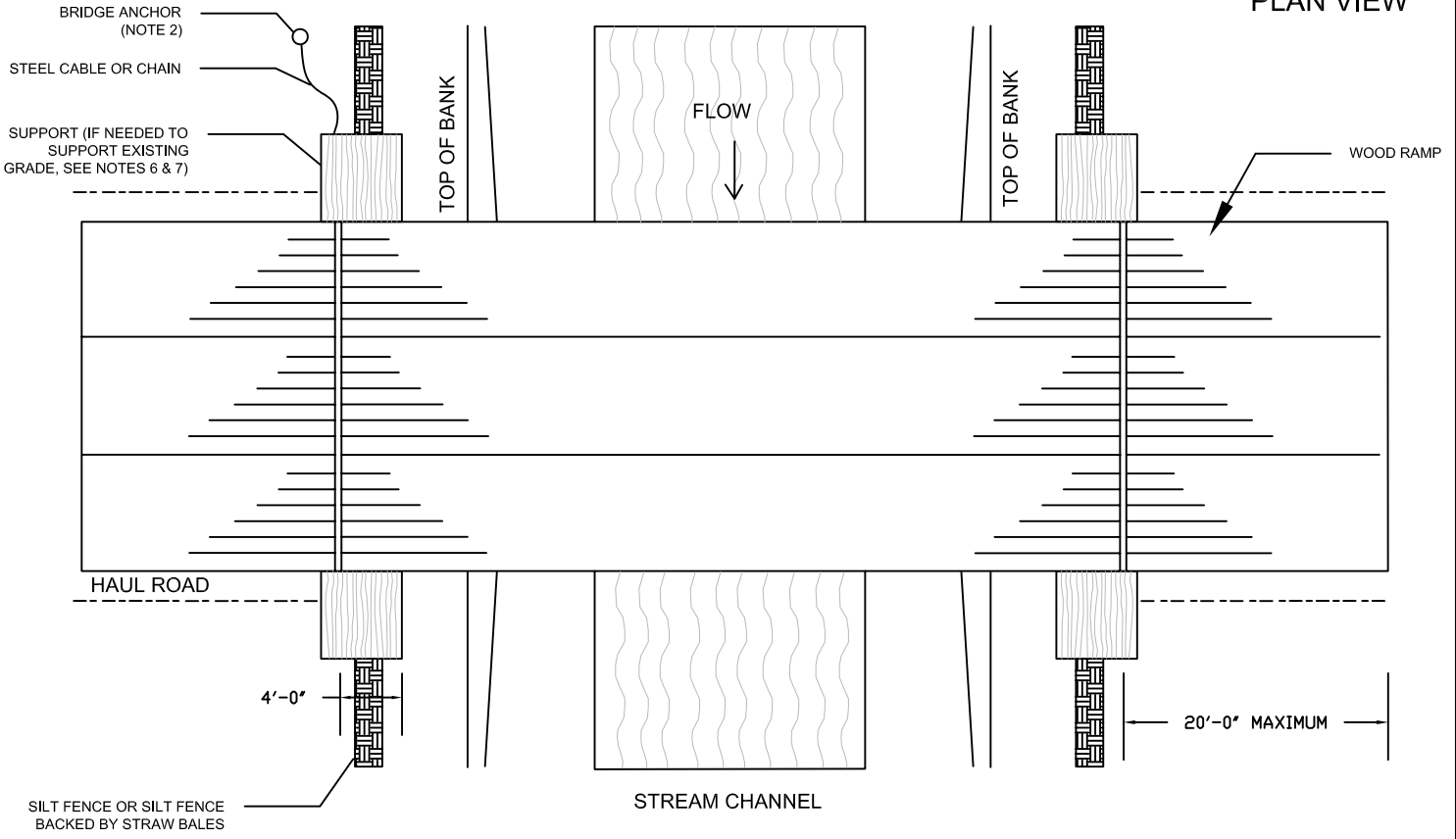


**Briggs Road Substation to La Crosse Tap 161 kV
 Transmission Line (Q-1D South) Rebuild Project (RUS #1060)**

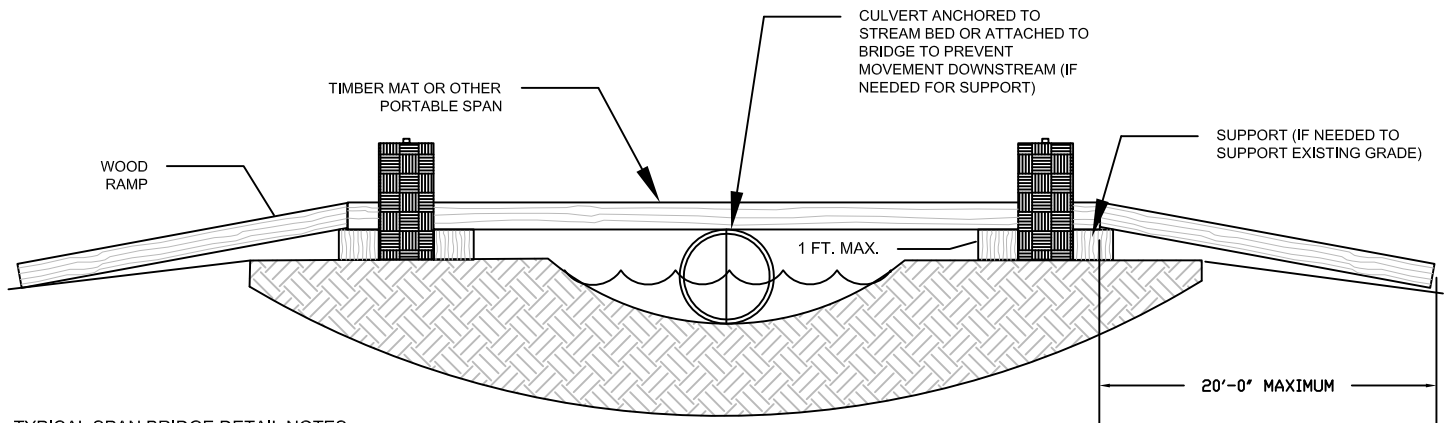
La Crosse County, Wisconsin

**Figure 1
 Project Location Map**
 April 2016

PLAN VIEW



PROFILE VIEW



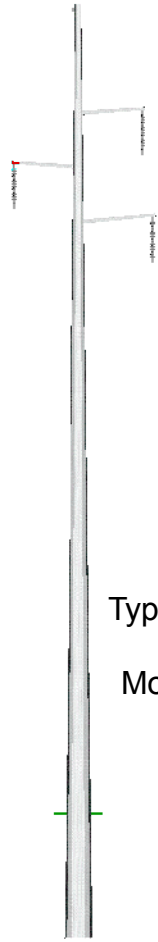
TYPICAL SPAN BRIDGE DETAIL NOTES:

1. THE BRIDGE MUST SPAN FROM TOP OF BANK TO TOP OF BANK.
2. THE BRIDGE MUST BE FIRMLY ANCHORED TO PREVENT IT FROM BEING TRANSPORTED DOWNSTREAM DURING HIGH FLOW. (FOR EXAMPLE: A STEEL POST DRIVEN TO A MINIMUM DEPTH OF 30").
3. THE BRIDGE SHOULD REMAIN IN PLACE UNTILL ALL WORK AT THAT LOCATION IS COMPLETED UNLESS OTHERWISE REQUIRED BY PERMIT CONDITION.
4. THE CULVERT SUPPORT MUST BE ANCHORED TO THE STREAM BOTTOM AND MAY NOT BE SUPPORTED WITH FILL. CULVERT SUPPORTS MAY ONLY BE USED WHERE AUTHORIZED IN THE REGULATORY PERMIT.
5. INSPECT BRIDGE OPENING PERIODICALLY AND FOLLOWING RAINFALLS OF OVER 0.5". REMOVE ANY DEBRIS RESTRICTING FLOWS AND DEPOSIT IT IN AN UPLAND SITE OUTSIDE THE FLOODPLAIN.
6. INSPECT THE BRIDGE ELEVATION SO THE BRIDGE REMAINS SUPPORTED ABOVE HIGH BANK AND DOES NOT SINK INTO THE BANK.
7. ADDITIONAL SUPPORT MUST BE ADDED ON TOP OF BANK AND UNDER SPAN IF INITIAL SUPPORT STARTS TO SETTLE.
8. ALL RESTORATION SHALL CONFORM TO WDNR APPROVED RESTORATION PLANS.
9. EROSION AND SEDIMENTATION CONTROL MEASURES SHALL BE INSPECTED AND MAINTAINED IN ACCORDANCE WITH EROSION CONTROL REQUIREMENTS SPECIFIED WITHIN PERMIT CONDITIONS.

**SPAN BRIDGE - TYPICAL
WITH OR WITHOUT INSTREAM SUPPORT**

DRAWN BY: RLDV
DATE: 2010-10-29
NOT TO SCALE

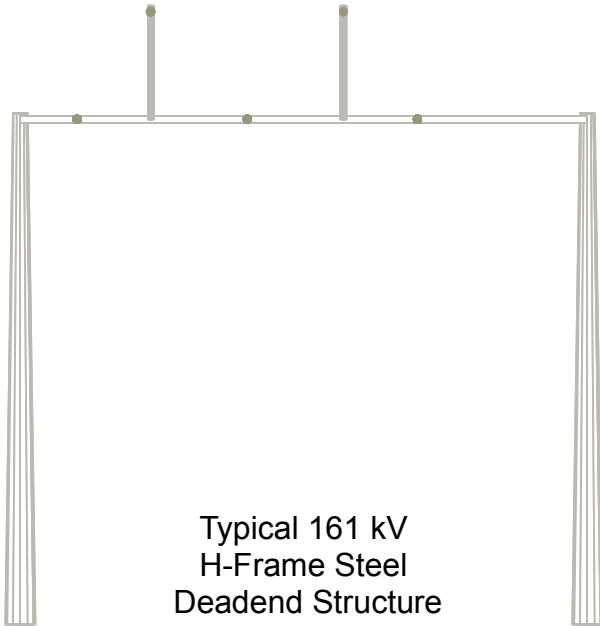
Y:\2013\60280210_Dairyland 01 Rebuild\06GIS\6.3\layout\Q1_South\Q1_South_Str_Diagram_160418.mxd



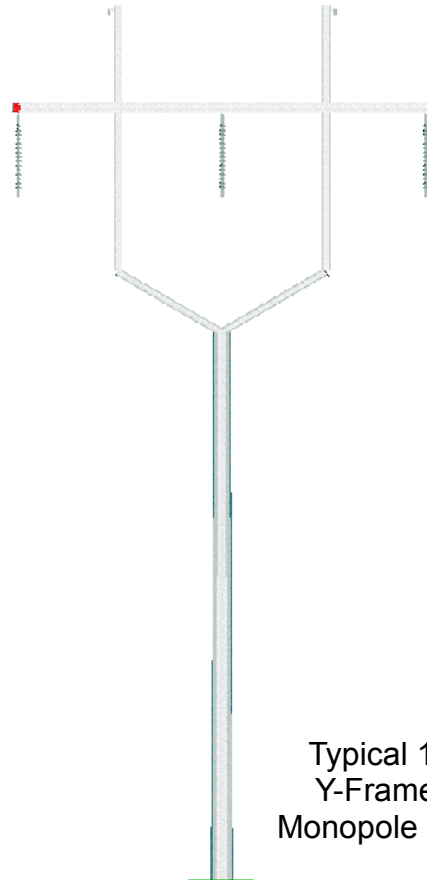
Typical 161kV Single
Circuit Steel
Monopole Structure



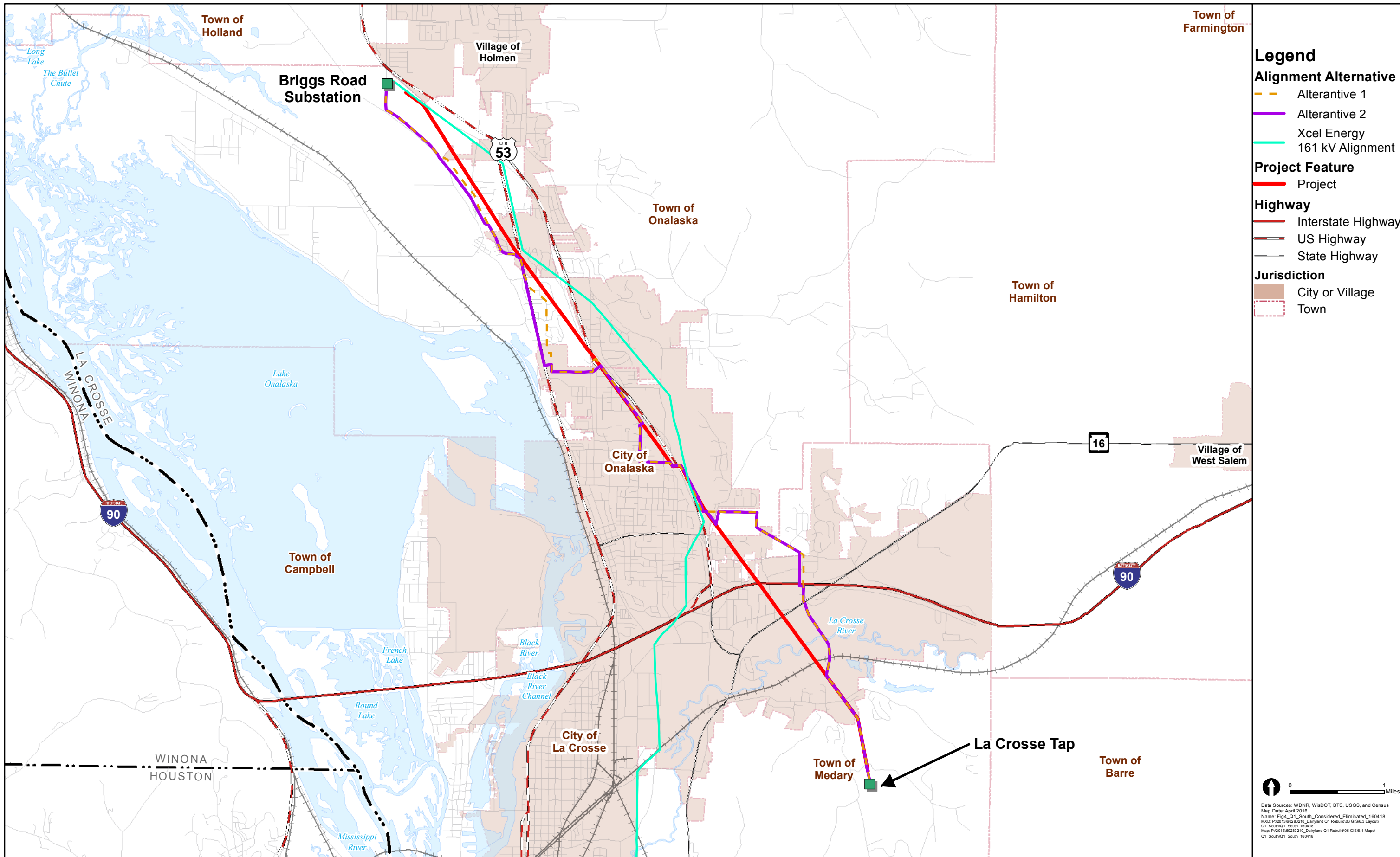
Typical 161/69 kV Double
Circuit Steel
Monopole Structure



Typical 161 kV
H-Frame Steel
Deadend Structure



Typical 161 kV
Y-Frame Steel
Monopole Structure



- Legend**
- Alignment Alternative**
- Alternative 1
 - Alternative 2
 - Xcel Energy 161 kV Alignment
- Project Feature**
- Project
- Highway**
- Interstate Highway
 - US Highway
 - State Highway
- Jurisdiction**
- City or Village
 - Town

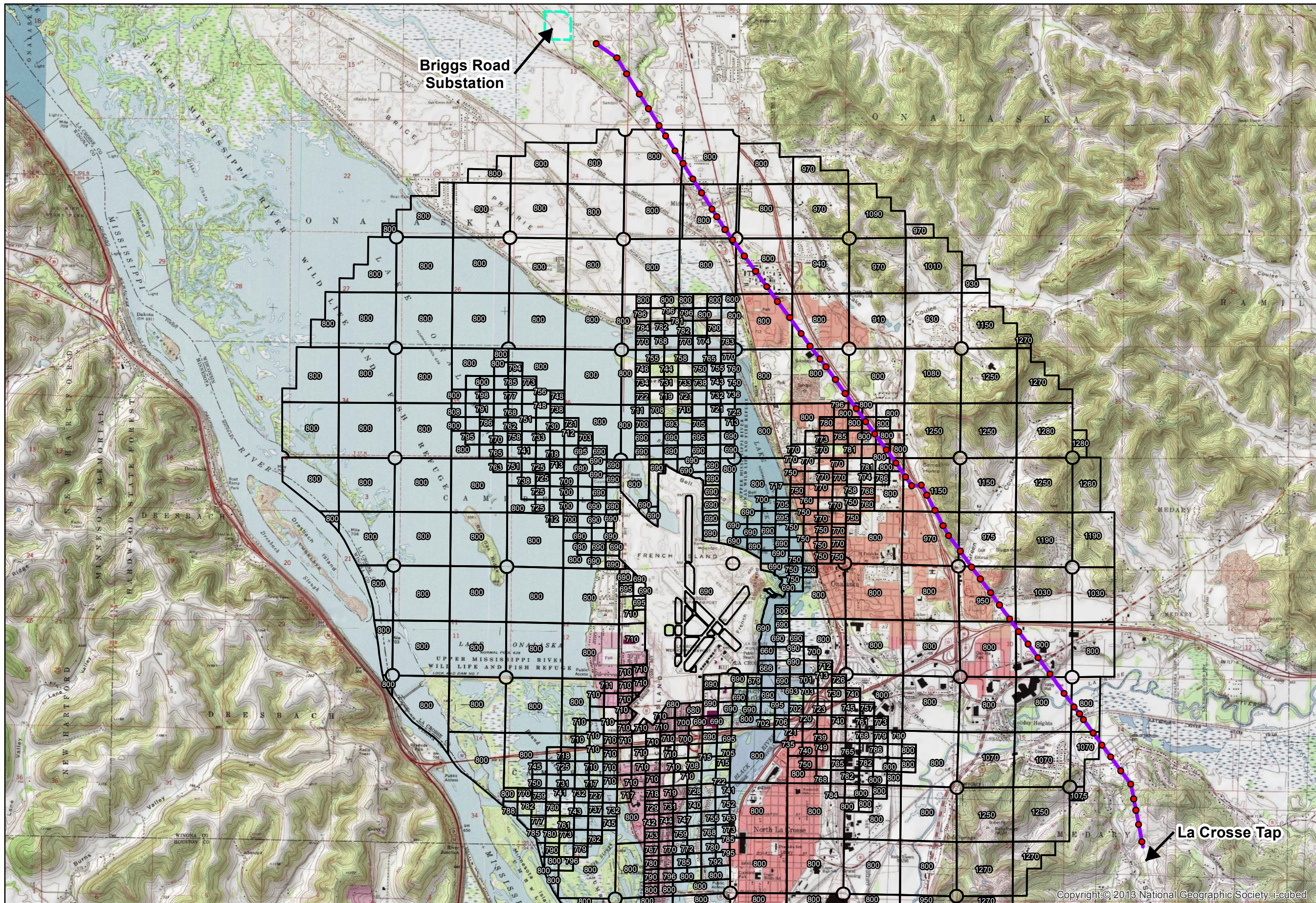
0 1 Miles

Data Sources: WDNr, WisDOT, BTS, USGS, and Census
 Map Date: April 2016
 Name: Fig4_Q1_South_Considered_Eliminated_160418
 MXD: P:\2013\60282010_Dairyland Q1 Rebuild\06 GIS\3 Layout
 Q1_South\Q1_South_160418
 Map: P:\2013\60282010_Dairyland Q1 Rebuild\06 GIS\1 Maps
 Q1_South\Q1_South_160418



**Briggs Road Substation to La Crosse Tap 161 kV
 Transmission Line (Q-1D South) Rebuild Project (RUS #1060)**
 La Crosse County, Wisconsin

Figure 4
 Q-1D South Rebuild Project
 Alternatives Considered but Eliminated
 April 2016



Briggs Road Substation

La Crosse Tap

Airport Zoning Overlay

Legend

- Project Feature**
- Proposed Pole Location
 - Project Centerline
 - Briggs Road Substation
 - City of La Crosse Airport Zoning Overlay



Data Sources: WDNR, WisDOT, BTS, USGS, Census
 Map Date: April 2016
 Name: Figs_Q1_South_Airport_AZO_160418.mxd
 P:\2013\02\20210_Dairyland Q1 Rebuild\06 GIS\6.3 Layout
 Q1_South\Q1_South_160418
 P:\2013\02\20210_Dairyland Q1 Rebuild\06 GIS\6.1 Maps
 Q1_South\Q1_South_160418

Copyright © 2013 National Geographic Society, i-cubed

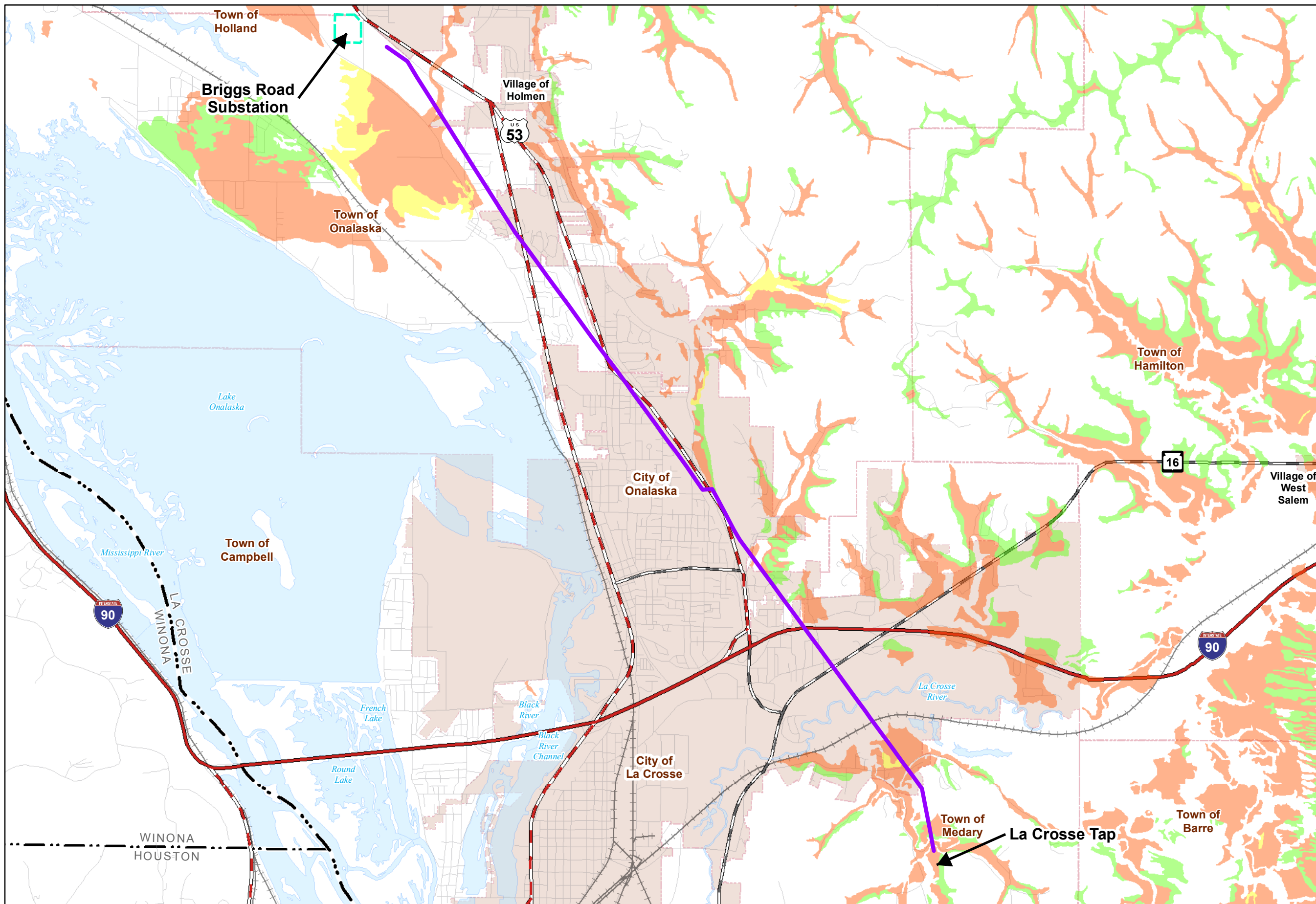


Briggs Road Substation to La Crosse Tap 161 kV Transmission Line (Q-1D South) Rebuild Project (RUS #1060)

La Crosse County, Wisconsin

Figure 5
 City of La Crosse Airport Zoning Overlay Map

April 2016



Prime Farmland

Legend

- Project Feature**
 - Project Centerline
 - Briggs Road Substation
- Prime Farmland**
 - All Areas are Prime Farmland
 - Farmland of Statewide Importance
 - Prime Farmland If Drained
- Highway**
 - Interstate Highway
 - US Highway
 - State Highway
- Jurisdiction**
 - City or Village
 - Town



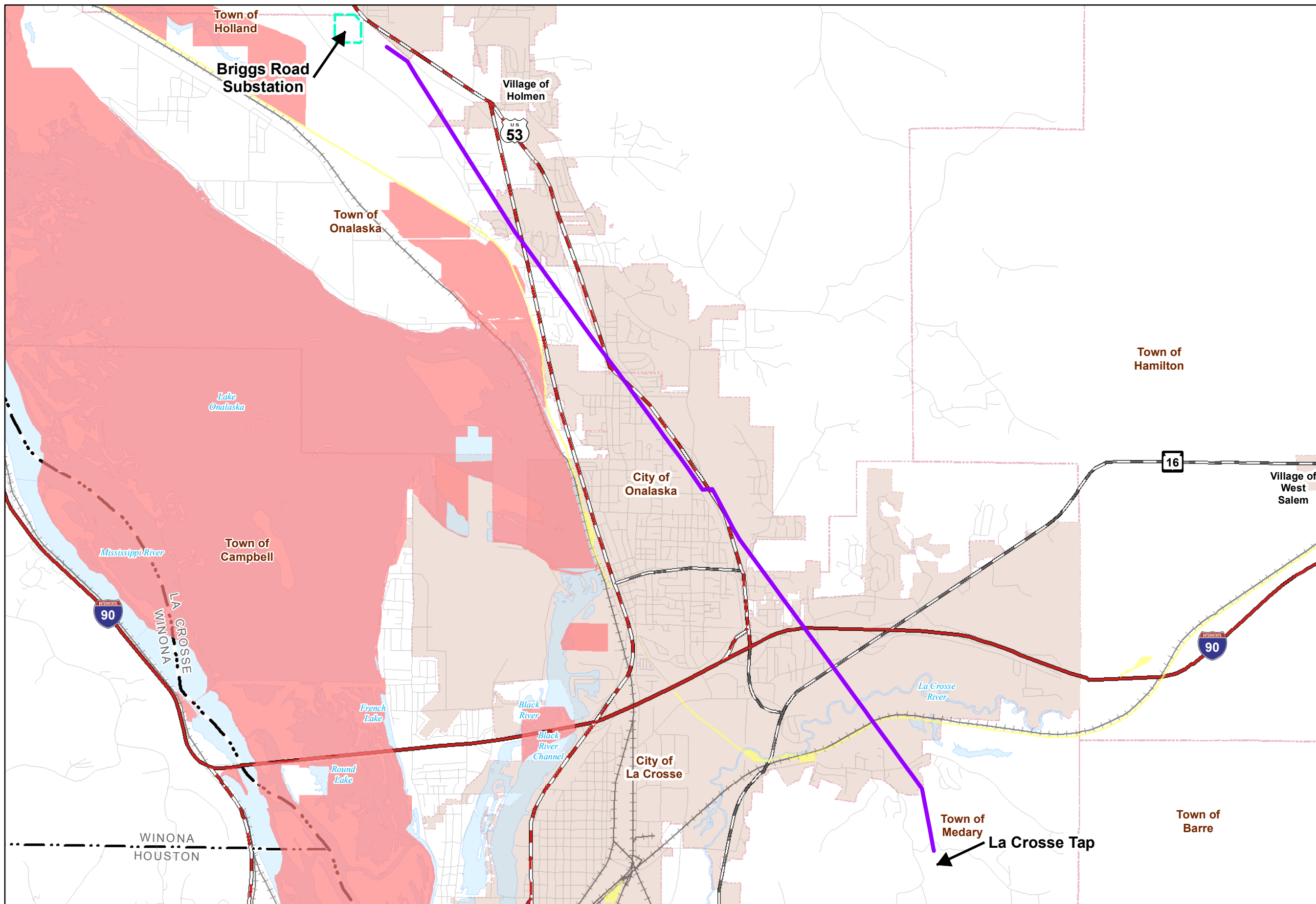
Data Sources: WDNR, WisDOT, BTS, USGS, Census, NRCS
 Map Date: April 2016
 Name: Fig6_Q1_South_PrimeFarm_160418
 P:\2013\6020210_Dairyland\Q1_Rebuild\06_GIS\6.3 Layout
 Q1_South\Q1_South_160418
 P:\2013\6020210_Dairyland\Q1_Rebuild\06_GIS\6.1 Map\Q1_South\Q1_South_160418



Briggs Road Substation to La Crosse Tap 161 kV Transmission Line (Q-1D South) Rebuild Project (RUS #1060)

La Crosse County, Wisconsin

Figure 6
Prime Farmland Map
 April 2016



Formally Classified Land

- Legend**
- Project Feature**
 - Project Centerline
 - Briggs Road Substation
 - Jurisdiction**
 - City or Village
 - Town
 - Federal Land
 - State Land
 - Transportation**
 - Interstate Highway
 - US Highway
 - State Highway



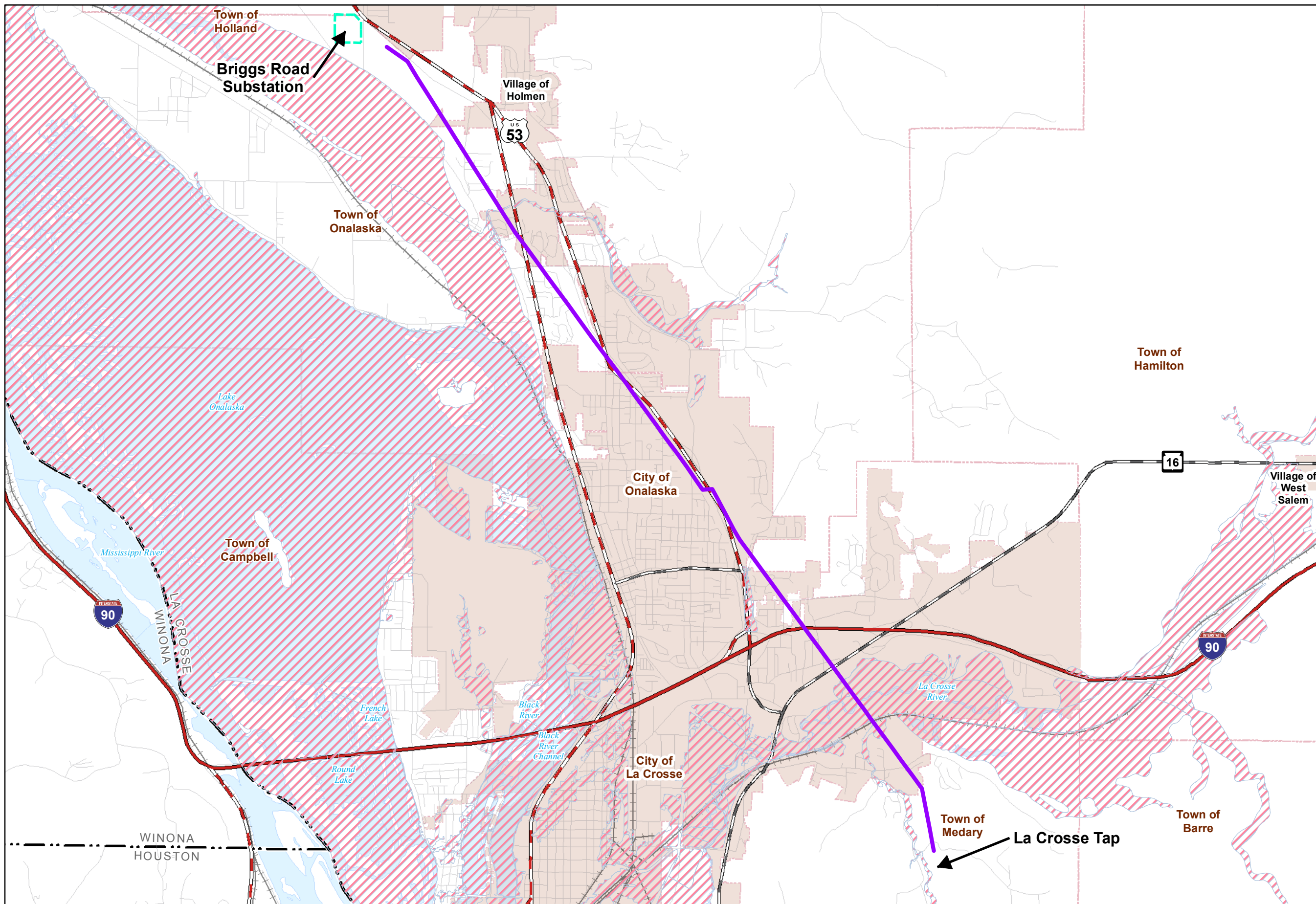
Data Sources: WDNR, WisDOT, BTS, Census
 Map Date: April 2016
 Name: Fig7_Q1_South_FormallyClassified_160418
 P:\2013\02\0216_Dairyland Q1 Rebuild GIS\3 Layout
 Q1_South\Q1_South_160418
 P:\2013\02\0216_Dairyland Q1 Rebuild GIS\1 Maps
 Q1_South\Q1_South_160418



**Briggs Road Substation to La Crosse Tap 161 kV
 Transmission Line (Q-1D South) Rebuild Project (RUS #1060)**

La Crosse County, Wisconsin

Figure 7
Formally Classified Land Map
 April 2016



FEMA Floodplain

- Legend**
- Project Feature**
- Project Centerline
 - Briggs Road Substation
- FEMA Floodplain**
- 100-Year Floodplain
- Highway**
- Interstate Highway
 - US Highway
 - State Highway
- Jurisdiction**
- City or Village
 - Town



Data Sources: FEMA, WDNR, WisDOT, BTS, USGS, Census
 Map Date: April 2016
 Name: Fig 8_Q1_South_Floodplain_160418
 P:\2013\02\02\10_Dairyland\Q1_Rebuild\06_GIS\6.3 Layout
 Q1_South\Q1_South_160418
 P:\2013\02\02\10_Dairyland\Q1_Rebuild\06_GIS\6.1 Map\Q1_South\Q1_South_160418



**Briggs Road Substation to La Crosse Tap 161 kV
 Transmission Line (Q-1D South) Rebuild Project (RUS #1060)**

La Crosse County, Wisconsin

**Figure 8
 FEMA Floodplain Map**
 April 2016

