



# Burlington - Wray

## 230-kilovolt Transmission Project

### SCOPING REPORT

*December 2012*



## CONTENTS

<b>1.0</b>	<b>INTRODUCTION.....</b>	<b>1</b>
<b>2.0</b>	<b>PROJECT DESCRIPTION.....</b>	<b>2</b>
<b>3.0</b>	<b>JOINT AGENCY AND PUBLIC SCOPING MEETINGS.....</b>	<b>4</b>
3.1	PURPOSE .....	4
3.2	NOTIFICATION PROCESS.....	4
3.2.1	Agency Attendance.....	4
3.3	SCOPING MEETING MATERIALS .....	5
3.4	COLLECTING PUBLIC COMMENTS .....	5
3.4.1	Comments from Federal and State Agencies.....	5
3.4.2	Comments Regarding Route Alternatives .....	6
3.4.3	Comments Regarding Project Support.....	6
3.4.4	Comments Regarding NEPA Process .....	6
3.4.5	General Comments .....	6
<b>4.0</b>	<b>PROJECT STATUS.....</b>	<b>7</b>
<b>5.0</b>	<b>REFERENCES.....</b>	<b>8</b>

## APPENDICES

Appendix A	Notice of Intent
Appendix B	Scoping Meeting Newspaper Notices
Appendix C	Landowner Notice Postcard
Appendix D	Letters Sent to Agencies
Appendix E	Scoping Meeting Sign-In Sheets
Appendix F	Scoping Meeting Materials
Appendix G	Scoping Comment Form
Appendix H	Index of Scoping Comments

## ACRONYMS

AES	Alternative Evaluation Study
CFR	Code of Federal Regulations
EA	Environmental Assessment
kV	kilovolt
NOI	Notice of Intent
MCS	Macro Corridor Study
MVA	megavolt amperes
RUS	Rural Utilities Service
Tri-State	Tri-State Generation and Transmission Association, Inc.
USC	United States Code
USDA	United States Department of Agriculture

## 1.0 INTRODUCTION

The United States Department of Agriculture (USDA) Rural Utilities Service (RUS) is considering a request for financial assistance from Tri-State Generation and Transmission Association, Inc. (Tri-State) to construct the Burlington-Wray 230-kilovolt (kV) Transmission Project (Project). Generally, RUS regulations (§1794.24(b) (1)) require that an Environmental Assessment (EA) with scoping be prepared to analyze requests for financial assistance for projects of this type. This Scoping Report identifies and summarizes substantive comments received during the scoping period for the Project.

This report describes the proposed Project and agency and public scoping meetings and materials and summarizes the substantive public comments received during the public scoping period of March 6, 2012 through April 6, 2012. In addition, the following information is included:

- Appendix A: Notice of Intent
- Appendix B: Scoping Meeting Newspaper Notices
- Appendix C: Landowner Notice Postcard
- Appendix D: Letter Sent to Agencies and Tribes
- Appendix E: Scoping Meeting Sign-In Sheets
- Appendix F: Scoping Meeting Materials
- Appendix G: Scoping Comment Form
- Appendix H: Index of Scoping Comments



## 2.0 PROJECT DESCRIPTION

Tri-State is a Colorado cooperative corporation that is owned by the 44 rural electric cooperative that it serves. Tri-State provides wholesale electric power to its members, which own and operate distribution systems and provide retail power to farms, homes and businesses in their respective service areas. Tri-State generates and transports power to its members throughout a 250, 000—square-mile service territory in Colorado, Wyoming, Nebraska, and New Mexico. Tri-State owns, operates, and maintains a transmission system consisting of more than 5,200 miles of transmission lines and 135 substations and switchyards.

Founded in 1952, Tri-State today serves more than 1.4 million consumers in four states. Tri-State's mission is to provide its members a reliable, cost-based supply of electricity while maintaining a sound financial position through effective use of human, capital, and physical resources in accordance with cooperative principles. Tri-State is proposing to construct the Burlington-Wray 230-kV Transmission Project. The Project consists of a new, single-circuit, 230-kV transmission line extending from the existing Burlington Substation in Kit Carson County, Colorado, to the existing Wray Substation in Yuma County, Colorado. The existing Tri-State transmission system in northeastern Colorado consists of a 230-kV line from Story to North Yuma to Wray, a 115-kV line from Wray to Burlington, and a 230-kV line extending from Burlington to Big Sandy to Midway (located between Colorado Springs and Pueblo). These two 230-kV transmission lines are linked together with a 115-kV line between Burlington and Wray. The lower voltage 115-kV line has a lower transmission capacity than the 230-kV lines and therefore severely restricts Tri-State's ability to fully utilize its 230-kV transmission system to dispatch its generation resources and serve its native load.

The proposed Project will increase reliability and capacity of the Tri-State system by providing a 230-kV path between the substations to more fully utilize the 230-kV system that exists on either side of the Project, and address load growth and generation dispatch concerns for Tri-State in this area. The proposed Project will strengthen the power delivery infrastructure and support proposed renewable energy development projects in the region. This Project is planned to begin construction in 2014-2015, with an in-service date of late 2015/early 2016.

Tri-State is requesting financial assistance from RUS for the Project. RUS funding of the proposed Project would constitute a federal action subject to National Environmental Policy Act (NEPA) analysis (42 United States Code [USC], § 4321, specifically 7 Code of Federal Regulations [CFR] §1794.3).

Tri-State completed two preliminary documents in preparation for scoping: an Alternative Evaluation Study (AES) and a Macro Corridor Study (MCS). These documents are required by RUS when an environmental analysis for a proposed electric transmission line project is conducted. The AES explains the need for the proposed Project, discusses the alternative methods that have been considered to meet that need, and recommends an alternative that is considered the best for fulfilling the need. The MCS defines the Project Study Area and illustrates the Project end points. Within the Project Study Area, macro corridors have been developed based on environmental, engineering, economic, and land use data as well as consideration of regulatory constraints. These documents are available for review on the RUS website at <http://www.rurdev.usda.gov/UWP-EA-Burlington-Wray.html> or upon request to RUS.

A Notice of Intent (NOI) was published in the *Federal Register* on February 22, 2012, informing the public of the intent by RUS to prepare an EA with scoping and included the dates for public scoping meetings during March 2012. A copy of the NOI is included in Appendix A. A list of the names of the publications and dates of these advertisements and legal notices are included in Table 1.1. Copies of the newspaper advertisements and legal notices are included in Appendix B.

**TABLE 1.1**  
**NEWSPAPERS AND DATES OF PUBLIC NOTICES**

<b>Newspaper</b>	<b>Publication Date</b>	<b>Location</b>
Yuma Pioneer	February 23, 2012	Yuma County, Colorado
The Burlington Record	February 23, 2012	Burlington, Colorado (Kit Carson County)

A public mailer (postcard) was distributed to approximately 1,860 landowners in the Project Study Area. The mailing list was developed initially using county landowner data from the Kit Carson and Yuma County Tax Assessors' Offices. A postcard was sent to every landowner in the Study Area, regardless of whether they owned property within the identified macro corridors. The public Project website contained details on the public scoping schedule and other Project information such as maps and fact sheets. A copy of the public mailer is included in Appendix C.

### 3.0 JOINT AGENCY AND PUBLIC SCOPING MEETINGS

RUS conducted two joint agency and public scoping meetings as listed in Table 3.1 using an open house format. RUS requires that public scoping meetings be held after regular business hours and at a reasonable distance for all people in the Project area to attend.

**TABLE 3.1**  
**PUBLIC SCOPING MEETINGS**

Date	Time	Location
March 6, 2012	5:00-8:00 PM	Burlington Community and Education Center 340 South 14 <sup>th</sup> Street Burlington, Colorado 80807
March 7, 2012	5:00-8:00 PM	Wray Roundhouse 245 West 4 <sup>th</sup> Street Wray, Colorado 80758

#### 3.1 PURPOSE

The purpose of the joint agency and public scoping meeting is to provide the public, public agencies, and other interested stakeholders with information regarding the proposed Project, answer questions, identify concerns regarding the potential environmental impacts that may result from construction and operation of the Project, and gather information to determine the scope of issues to be addressed in the RUS environmental review and documentation of the Project (USDA 2002). The notification process, public scoping meeting materials, and the process for collecting public comments are described in the following sections.

#### 3.2 NOTIFICATION PROCESS

Several methods were used to notify the public of the scoping process and meetings, including the RUS Federal Register notice; written letters sent to local, state, and federal agencies; Tri-State's public notice/advertisement in local newspapers; and general public notification by direct mail postcards and the Project website. The NOI, published in the *Federal Register* on February 22, 2012, notified the public of the intent for RUS to prepare an EA and hold public scoping meetings. A legal notice and newspaper ads were printed on February 23, 2012, in area newspapers (Table 1.1). Postcards with information on the Project and scoping meeting dates and locations were sent to 2,201 stakeholders in the proposed Project area during the week of February 13, 2012, to inform them of public scoping meetings. The Project website was updated the week before the public scoping meetings with the meeting materials, handouts, and maps. Letters were sent to federal, state, and local agency representatives to inform them of public scoping meetings. Copies of agency letters and a list of recipients are included in Appendix D.

##### 3.2.1 Agency Attendance

A total of four participants representing the following agencies signed in at the public scoping meetings:

- Yuma County (1)
- City of Burlington, Colorado (2)
- Colorado Parks and Wildlife (1)

### **3.3 SCOPING MEETING MATERIALS**

An open house format was used to encourage discussion and information sharing and to ensure that the public had opportunities to speak with RUS and Project representatives. Ten information stations and eight large aerial map boards were staffed by either representatives of RUS, Tri-State, or consultants of Tri-State. Information stations at the public scoping meetings included:

- Sign-in and Welcome Table
- Project Overview
- Federal Review Process
- Natural and Cultural Resources
- Siting and Permitting Process
- Electric and Magnetic Fields
- Geographic Information System (GIS) Mapping Station
- Engineering and Electric Transmission
- Transmission Siting Opportunities and Constraints
- Working with Landowners
- Public Comment tables, including large sheet maps and map boards with detailed alternative route segments for mark-up and comment forms

Sign-in sheets and comment forms were made available to all scoping meeting attendees and are included in Appendix E. Public scoping meeting materials are included in Appendix F. A copy of the public comment form is included in Appendix G.

### **3.4 COLLECTING PUBLIC COMMENTS**

A total of 27 public comments were received during the scoping comment period beginning on March 6, 2012, and ending on April 6, 2012. Two of these comments were from federal agencies. Normally RUS will provide a 30-day comment period following the scoping meetings that would begin the date of the latest meeting and extend through the 30<sup>th</sup> calendar day following the meeting (USDA 2002). The comments received after the deadline are not included in this report, but will continue to be collected and considered by RUS. Public comments were submitted using comment forms, letters, emails, and phone calls. All comments were submitted at the public meeting, directly delivered to RUS, or forwarded to RUS if they were submitted to the Project proponent by the commenter. A summary of the public comments received and organized by category is provided below. Each of the comments was entered into the comment management database. Appendix H includes an index of comments received during the scoping comment period.

#### **3.4.1 *Comments from Federal and State Agencies***

The National Park Service submitted a letter stating it had no comment on the Project.

A letter from Colorado Parks and Wildlife was received nearly a month after the close of the scoping comment period. The letter summarized the agency's concerns regarding potential Project impacts to area wildlife and habitat. The letter pointed out areas of bird habitat, and suggested that routing a transmission line along existing roads, transmission line corridors, and developed lands are ways to minimize environmental impacts that may be associated with the Project.

#### **3.4.2      *Comments Regarding Route Alternatives***

Sixteen comments were received regarding routing and offering suggestions for alternative routes or general requests that a different route be chosen. These comments are further summarized below:

- Two comments suggested moving a route segment to follow section lines.
- One comment requested other segments be chosen over a segment that would be near a sprinkler system.
- One comment objected to a particular segment because of planned (private) campsite development.
- One comment objected to a segment because of the size of the corridors.
- Two comments suggested a new segment alternative to avoid splitting up land parcels.
- One comment suggested other alternatives to avoid having a line located on a particular property.
- One comment objected to a segment.
- Six comments expressed a preference not to have a transmission line located on the commenters' respective properties. Two of these comments noted that route segments would interfere with current agricultural land uses, and another two comments noted that a segment alternative would pass through an old family ranch and requested another alternative be considered.
- One comment suggested the final route should parallel the existing 115 kV transmission line and noted concerns about environmental impacts to sandhills if the line were to be constructed in the western portion of the Study Area.

#### **3.4.3      *Comments Regarding Project Support***

Seven comments were received that expressed support for the Project. Three comments were received that stated no opposition to the Project and expressed a desire to have the Project routed on the commenters' lands. One additional comment noted that a segment was located on the commenter's land and expressed support for the Project. Three other comments expressed general support for the Project.

#### **3.4.4      *Comments Regarding NEPA Process***

One public comment was received from a Limited Liability Corporation regarding various aspects of the NEPA process. This comment included concerns about the Project's purpose and need; the thoroughness of the AES; and direct, indirect, and, cumulative impacts of the proposed Project. The comment suggested an Environmental Impact Statement may be more appropriate for the Project than an EA.

#### **3.4.5      *General Comments***

One comment was received that generally stated that there is no free access for surveys or studies.

## **4.0 PROJECT STATUS**

A third round of public meetings was held in August 2012 to present Alternative Routes, including a Preferred Alternative, and solicit public input. Based on the scoping process and comments received, RUS has decided to prepare an EA. A public review and comment period for the EA will occur in early 2013. In addition, RUS will engage in necessary agency consultation and coordination regarding potential effects to resources. RUS will continue to review and respond to substantive comments provided to it. A Project Decision is anticipated in 2013.

## 5.0 REFERENCES

United States Department of Agriculture [USDA]. 2002. *RUS Bulletin 1794A-603: Scoping Guide for RUS Funded Projects Requiring Environmental Assessments With Scoping and Environmental Impact Statements*. Engineering and Environmental Staff, Rural Utilities Service, U.S. Department of Agriculture.

**APPENDIX A**  
**NOTICE OF INTENT**



## Scoping Process

This notice of intent initiates the scoping process, which guides the development of the EIS/EIR. The complete Plan of Operation and Reclamation Plan is available on the San Bernardino National Forest Web site at: [http://data.ecosystem-management.org/nepaweb/nepa\\_project\\_exp.php?project=32613](http://data.ecosystem-management.org/nepaweb/nepa_project_exp.php?project=32613).

Public Scoping meetings will be held on Tuesday, March 13, 2012 at the Lucerne Valley Community Center, 33187 Old Woman Springs Road, Lucerne Valley, California 92356 beginning at 7 pm PST, and Tuesday, March 20, 2012 at the Big Bear Discovery Center, 40971 North Shore Drive (Highway 38), Fawnskin, California 92333 beginning at 7 pm PST.

It is important that reviewers provide their comments at such times and in such manner that they are useful to the agency's preparation of the EIS/EIR. Therefore, comments should be provided prior to the close of the comment period and should clearly articulate the reviewer's concerns and contentions.

Dated: February 13, 2012.

**Jody Noiron,**

*Forest Supervisor, San Bernardino National Forest.*

[FR Doc. 2012-3938 Filed 2-21-12; 8:45 am]

**BILLING CODE 3410-11-M**

## DEPARTMENT OF AGRICULTURE

### Rural Utilities Service

#### Tri-State Generation and Transmission Association, Inc., Notice of Intent To Hold Public Scoping Meetings and Prepare an Environmental Assessment

**AGENCY:** Rural Utilities Service, USDA.

**ACTION:** Notice of Intent To Hold Public Scoping Meetings and Prepare an Environmental Assessment.

**SUMMARY:** The Rural Utilities Service (RUS), an agency of the United States Department of Agriculture, intends to hold public scoping meetings and prepare an Environmental Assessment (EA) to meet its responsibilities under the National Environmental Policy Act (NEPA) and RUS's Environmental Policies and Procedures (7 CFR part 1794) in connection with potential impacts related to a proposed project in Colorado by Tri-State Generation and Transmission Association, Inc. (Tri-State). The proposed Burlington-Wray 230-kilovolt (kV) Transmission Project (Proposal) consists of the following: a proposed new single-circuit 230-kV electric transmission line between the existing Burlington Substation in Kit

Carson County and the existing Wray Substation in Yuma County. Tri-State is requesting that RUS provide financial assistance for the Proposal.

**DATES:** RUS will conduct public scoping meetings in an open house format to provide information and solicit comments for the preparation of the EA. The scoping meetings will be held on the following dates: Tuesday, March 6, 2012, from 5–8 p.m. at the Burlington Community Center, 340 South 14th Street, Burlington, Colorado 80807; Wednesday, March 8, 2012, 5–8 p.m. at the Wray Roundhouse, 245 West 4th Street, Wray, Colorado 80758. All written questions and comments must be received on or before March 23, 2012.

**ADDRESSES:** An Alternative Evaluation Study (AES) and Macro Corridor Study (MCS) have been prepared for the proposed project. All documents are available for review prior to and at the public scoping meetings. The reports are available at the RUS address provided in this notice and on the agency's Web site: <http://www.rurdev.usda.gov/UWP-ea.htm>. The documents are also available for review at the offices of Tri-State and its member cooperatives K.C. Electric Association and Y–W Electric Association. In addition, the following repositories will have the AES and MCS available for public review:

Tri-State Generation and Transmission Association, Inc., 1100 West 116th Avenue, Westminster, Colorado 80234–2814.

K.C. Electric Association, 281 Main Street, Stratton, Colorado 80836.

Y–W Electric Association, 1016 Grants Way, Wray, Colorado 80758–1915.

Wray Public Library, 301 W. 7th Street, Wray, Colorado 80758.

Burlington Public Library, 321 14th Street, Burlington, CO 80807.

**FOR FURTHER INFORMATION CONTACT:** To obtain copies of the EA, to comment on the EA, or for further information, contact Dennis Rankin, Environmental Protection Specialist, USDA Rural Utilities Service, 1400 Independence Avenue SW., Stop 1571, Washington, DC 20250–1571, Telephone: (202) 720–1953, Facsimile: (202) 690–0649, or email [dennis.rankin@wdc.usda.gov](mailto:dennis.rankin@wdc.usda.gov).

**SUPPLEMENTARY INFORMATION:** The primary purpose for the Proposal is to alleviate transmission system limitations in eastern Colorado, improve Tri-State's ability to dispatch existing generation resources in eastern Colorado, and improve Tri-State's ability to deliver energy to native load customers. The proposed action also would provide a transmission outlet for

renewable energy generation in eastern Colorado.

Tri-State is seeking funding from RUS for the Proposal. Prior to making a financial decision about whether to provide financial assistance for a proposed project, RUS is required to conduct an environmental review under the NEPA in accordance with the RUS Environmental Policies and Procedures codified in 7 CFR part 1794. Government agencies, private organizations, and the public are invited to participate in the planning and analysis of the proposed action. Representatives from the RUS and Tri-State will be available at the scoping meetings to discuss the environmental review process, describe the Proposal, discuss the scope of environmental issues to be considered, answer questions, and accept comments. RUS and Tri-state will use comments and input provided by all interested parties in the preparation of an Environmental Assessment. Tri-State will submit the EA to RUS for review. RUS will use the environmental document to determine the significance of the impacts of the Proposal and may adopt the environmental document as its EA for the proposal. RUS's EA will be available for review and comment for 30 days. Announcement of the availability of the EA will be published in the **Federal Register** and in newspapers with circulation in the project area.

Should RUS determine that the preparation of an Environmental Impact Statement is not necessary, it will prepare a Finding of No Significant Impact (FONSI). Announcement of the availability of a FONSI will be published in the **Federal Register** and in newspapers with circulation in the project area. Any final action by RUS related to the Proposal will be subject to, and contingent upon, compliance with all relevant Federal, State and local environmental laws and regulations and completion of the environmental review procedures as prescribed by RUS's Environmental Policies and Procedures (7 CFR part 1794).

Dated: February 15, 2012.

**Mark S. Plank,**

*Director, Engineering and Environmental Staff, USDA, Rural Utilities Service.*

[FR Doc. 2012-4082 Filed 2-21-12; 8:45 am]

**BILLING CODE P**

**APPENDIX B**  
**SCOPING MEETING NEWSPAPER NOTICES**



# Hard work pays off with title

Champ from page 1

it too. He was the one who got us into it in the first place.”

Jon earned a spot in select group of YHS wrestlers who qualified for state every year in high school, with a third- and fifth-place finish on his resumé.

Tyler was not so quick to reach such heights. He did not qualify for state his freshman and sophomore years, when he was in the middle weights.

However, he went through a growth spurt and went from 145 his sophomore year to 171 as a junior, when he finally made it to state.

He made the most of it by placing fifth and finishing with a 39-7 record.

No longer an unknown, Korf spent this season as the No. 1 ranked wrestler in 2A at 182 pounds. It hardly fazed him as he went 37-2, his losses coming to the eventual 4A state champion from Arvada and a 5A state placer from Denver East.

“That’s a big target on his back but he responded to it all year long,” Klopp said.

Korf credits his increased success the last two years in large part to attending the Mile High Wrestling Club in Brighton every Sunday. The club is run by storied Colorado high school wrestler Tom Clum. The wrestlers go over technique and then get in live matches against each other.

And he did this after spending the other six days of the week already practicing and competing.

“A lot of the top guys went there so it gave me better competition and I got to wrestle some more,” Korf said.

“Tyler has put in the necessary work all year long to be successful in February and it paid off in a big way by pinning through the state tournament,” Klopp said.

That 32 second pin was not the only one for Korf. He opened the state tournament last Thursday in Denver with



Photo by Hannah Korf

The referee raises Tyler Korf’s arms in triumph after the Yuma senior pinned Paonia’s Morgan Rieder (far right) in the Class 2A 182-pound championship match, last Saturday.

a pin of Meeker’s JR Crawford in 3 minutes, 28 seconds. He came back Friday morning in the quarterfinals against Wade Tope of Peyton. Korf controlled the match before finally getting the pin in the third period at the 5:16.

That set up semifinal that night against Hayden’s Ryan Domson, whom he also beat in overtime at state last year.

Every title run needs a close call, and this is where it occurred for Korf. He fell behind 2-0 in the second, and did not tie it up until the third. He then finally got Domson on his back with 20 seconds left, and got the pin with two seconds

on the clock.

“He wrestled at state like he has all year long, by wearing down his opponent and grinding until his opponent breaks and then finishing them off,” Klopp said. “It’s a strategy that Tyler and I have talked all season long about and he stayed to the script. His first three matches at state reminded me of the regular season with that wear-them-down attitude.”

Korf noted that it helped he was relaxed throughout the tournament.

“I was more nervous last year at state,” he said.

Even when he was on the floor of the Pepsi Center wait-

ing for his match to start, Saturday night, with 17,000 people in the seats, he was able to keep his cool.

“I was surprised; I didn’t have any nerves,” Korf said. “I was calm. It’s your last match and you know it’s over with.”

He then went out and met Rieder head-on, joining Bill Stallings (95 pounds, 1962), Dan Greenfield (103, 1967), Byron Korf (275, 2004), and Zach Diaz (160, 2008) as state wrestling champions from YHS.

“You know it’s you who earned it,” Korf said of winning a state wrestling title.

Yes Tyler, you most definitely did.

# Employers are reasonable

Credit from page 2

review the credit history of potential employees. But credit history isn’t the only factor considered in the hiring process nor is it the most important.

Moreover, businesses don’t sneak around to snoop at employees’ credit history. The federal Fair Credit Reporting Act already requires employers to obtain written permission from the applicant to check credit history. Even then, the employer doesn’t see the actual credit score.

Various media reports suggest, using mostly anecdotal evidence, that job applicants with poor credit histories cannot get a job and that it’s normal for a person’s credit history to tank after losing a job.

Neither happens to be true.

With truly rare exceptions, an individual has more control over his or her credit history than does any external factor.

Losing a job certainly puts a strain on anyone’s finances, but not everyone who is unem-

ployed dives deeply into debt or fails to make responsible adjustments to their spending habits. Surely job-seekers who maintain sound credit through these difficulties are entitled to be distinguished from those who don’t.

According to the Denver Post, “Senator Carroll said it’s unfair that a bad credit record should keep an otherwise qualified candidate from landing a job.” In fact, a bad credit rating is rarely, if ever, the determining factor.

Employers are, by and large, reasonable people who use a myriad of criteria to make personnel decisions. By considering an applicant’s employment history, training and references, employers are capable of discerning between someone who’s recently fallen on hard times and someone who is habitually one step ahead of the collection agency.

What is alarming is the persistent drumbeat by some legislators that treat employers as unscrupulous adversaries who must be constantly

regulated, micromanaged and threatened with litigation.

Colorado businesses are job creators whose faith in our state’s economic climate and its government is essential to spur a sustained recovery. Yet year after year, a handful of legislators devise still more ways to make Colorado employers jump through regulatory hoops and spend countless hours and thousands of dollars in the courts defending themselves against mostly bogus allegations concocted by trial lawyers seeking a quick payday on behalf of disgruntled former employees.

Senate Bill 3 is yet another political solution in search of a real-world problem. Federal law already ensures that job-seekers control access to their credit history.

Here’s hoping legislators who recognize employers as allies rather than adversaries will stand together to defeat this ill-considered measure.

Mark Hillman is executive director of Colorado Civil Justice League ([www.CCJL.org](http://www.CCJL.org)).

## NOTICE OF PUBLIC SCOPING MEETINGS

**BURLINGTON COMMUNITY CENTER**  
340 SOUTH 14TH STREET  
BURLINGTON, CO 80807  
MARCH 6, 2012  
ANYTIME BETWEEN 5:00 – 8:00 PM

**WRAY ROUNDHOUSE**  
245 WEST 4TH STREET  
WRAY, CO 80758  
MARCH 7, 2012  
ANYTIME BETWEEN 5:00 – 8:00 PM

The United States Department of Agriculture’s Rural Utilities Service (RUS) and Tri-State Generation and Transmission Association, Inc. (Tri-State), invite you to attend a public scoping meeting to review and comment on the proposed Burlington-Wray 230-kilovolt (kV) Transmission Project in eastern Colorado. RUS is holding public scoping meetings and preparing an Environmental Assessment (EA) to meet its responsibilities under the National Environmental Policy Act (NEPA) and 7 CFR part 1794 in connection with potential impacts related to Tri-State’s proposed project. The Burlington-Wray 230-kilovolt (kV) Transmission Project (proposed action) consists of constructing a new single-circuit 230-kV electric transmission line between the existing Burlington Substation in Kit Carson County and the existing Wray Substation in Yuma County. Tri-State is requesting that RUS provide financial assistance for the proposed action. RUS will conduct public scoping meetings in an open house format to provide information and solicit comments for the preparation of the EA. Please note there are no formal presentations at the scoping meetings. Detailed maps depicting changes to corridor alignments, preliminary route alternatives, and other information will be available at the meetings for review anytime between 5:00 PM and 8:00 PM. For further information, please refer to the Public Notice published in the Legal Notices section of this edition of the newspaper.

## QUIPS / AND HEALTH

BY ALAN WHITE

**Saloon Arthritis-Getting Stiff In A Different Joint Each Night.**



*Date all over the counter drugs when you buy them. Keep all drugs out of the reach of children.*

**Shop-ALL Family Pharmacy**  
315 E. 8th Ave.  
Yuma, CO  
848-5427

## Proudly Sharing Our Profits



Pictured from left are Premier’s Board of Directors: Bob Sitzman, Chairman Martin Christensen, Becky Lenz, Dennis Firme, Marty Brophy, Ed Amen, Gary Lancaster, Wayne Midcap, Vice Chairman Eldon Heermann, and Bruce Kokes.



**Premier Farm Credit**  
The Gold Standard in Ag Lending

Sterling  
970.522.2330

Fort Morgan  
970.867.4966

Yuma  
970.848.5839

Lending Support to Rural America  
[premierfarmcredit.com](http://premierfarmcredit.com)  
Premier Farm Credit is an Equal Credit Opportunity Lender





## Johnna Jerman ~ Derek Harris Engagement



B. Selvidge Photography

John and Wendy Jerman of Sterling Colorado would like to announce the engagement of their daughter Johnna to Derek Harris, son of William (Bill) and Edie Harris of Yuma, Colorado. Johnna is a 2006 graduate of Sterling High School and is employed at the Logan County Assessor's office. Derek is a 2002 graduate of Lone Star School and is employed at Centennial Mental Health. The couple will be married March 5, 2012 in Negril, Jamaica.

## Celebrating 80 years of life in Yuma!



## A great place to live!

### WANTED: 5 HOMES

**TO APPLY MT. STATES COMPOSITE SIDING**  
5 homeowners in this general area will be given the opportunity to have

#### MT. STATES COMPOSITE SIDING

Applied to their home with decorative trim at a very low cost. This amazing new product has captured the interest of homeowners throughout the United States who are fed up with constant painting and maintenance costs. Backed with fade and lifetime material warranty, and providing full insulation, summer and winter, this product can be installed on every type of home. It comes in a choice of colors and is now being offered to the local market. Your home can be a showplace in your vicinity. We will make it worth your while if we can use your home.

**Financing Available WAC "Offer Limited-CALL NOW!"**

#### INSULATED WINDOWS ALSO AVAILABLE

For an appointment, please call toll free:

**1-888-540-0334**

**Nationwide Builders**

3 Generations of Experience-www.nbcindustries.com

excess is out™

CHOOSE ONE

☐ comfort

☐ lower energy bill

☒ all of the above

Getting HEAT

stem HEAT

Comfort

Bath

Savings

The only thing better than a warm, comfortable home is the satisfaction that comes from a lower energy bill. We want you to have both. That's why we offer great rebates for new, energy efficient furnaces. You can **save up to \$300.** on a new efficient furnace.

**Get rebates and more information**  
**excessisout.com**

Brought to you by your Partners in Energy Savings

Source Gas

ATMOS energy

Colorado Natural Gas, Inc.

# Public Notices.....Your right to know!

#### COMBINED NOTICE - PUBLICATION CRS §38-38-103 FORECLOSURE SALE NO. 2011-1565

To Whom It May Concern: This Notice is given with regard to the following described Deed of Trust: On November 14, 2011, the undersigned Public Trustee caused the Notice of Election and Demand relating to the Deed of Trust described below to be recorded in the County of Yuma records. Original Grantor(s): CHRISTOPHER L MCCLUNG Original Beneficiary(ies): COLORADO COMMUNITY BANK OF YUMA Current Holder of Evidence of Debt: COLORADO HOUSING AND FINANCE AUTHORITY County of Recording: Yuma Date of Deed of Trust: 12/19/2003 Recording Information(Reception Number and/or Book/Page Number): 515186 Original Principal Amount: \$33,100.00 Outstanding Principal Balance: \$29,085.37 Pursuant to CRS §38-38-101(4)(i), you are hereby notified that the covenants of the deed of trust have been violated as follows: failure to pay principal and interest when due together with all other payments provided for in the evidence of debt secured by the deed of trust and other violations thereof.

**THE LIEN FORECLOSED MAY NOT BE A FIRST LIEN. SECOND PLAT OF CATCH-POLES'S FIRST EAST ADDITION TO ECKLEY, COLORADO BLOCK 24: W1/2 OF LOT 4 AND ALL OF LOTS 5,6,7,8,9, AND 10. Also known by street and number as: 302 EAST WILSON, ECKLEY, CO 80727. THE PROPERTY DESCRIBED HEREIN IS ALL OF THE PROPERTY CURRENTLY ENCUMBERED BY THE LIEN OF THE DEED OF TRUST NOTICE OF SALE**

The current holder of the Evidence of Debt secured by the Deed of Trust, described herein, has filed Notice of Election and Demand for sale as provided by law and in said Deed of Trust. THEREFORE, Notice Is Hereby Given that I will at public auction, at 10:00 AM on Wednesday, 03/14/2012, at West Front Steps of Yuma County Courthouse, sell to the highest and best bidder for cash, the said real property and all interest of the said Grantor(s), Grantor(s)' heirs and assigns therein, for the purpose of paying the indebtedness provided in said Evidence of Debt secured by the Deed of Trust, plus attorneys' fees, the expenses of sale and other items allowed by law, and will issue to the purchaser a Certificate of Purchase, all as provided by law. First Publication 1/26/2012 Last Publication 2/23/2012 Name of Publication The Yuma Pioneer DATE: 11/14/2011 Dee Ann Stults, Public Trustee in and for the County of Yuma, State of Colorado The name, address, business telephone number and bar registration number of the attorney(s) representing the legal holder of the indebtedness is: Lynn M. Janeway #15592 Lindsay J. Miller #42372 David R. Doughty #40042 Sheila J. Finn #36637 Janeway Law Firm, P.C. 19201 E. Main Street, Suite 205, Parker, CO 80134-9092 (303) 706-9990 Attorney File # JLF No.:13423 The Attorney above is acting as a debt collector and is attempting to collect a debt. Any information provided may be used for that purpose.

**DISTRICT COURT, WATER DIVISION 1, WELD COUNTY COLORADO, 901 9TH AVENUE, P.O. BOX 2038, GREELEY, COLORADO, 970-351-7300**

**Plaintiff/Counterclaim Defendant:** The Jim Hutton Educational Foundation, a Colorado non-profit corporation, v.

**Defendant/Counterclaimant/Cross Claimant:** State of Colorado, Department of Natural Resources, Division of Parks and Wildlife, v.

**Defendants/Cross Claim Defendants:** State of Colorado, Department of Natural Resources, Division of Water Resources, Dick Wolfe, P.E., in his capacity as the Colorado State Engineer, and David Nettles, P.E. in his capacity as Division Engineer in and for Water Division No. 1; the Republican River Water Conservation District, AND ALL UNKNOWN PERSONS WHO CLAIM ANY INTEREST IN THE SUBJECT MATTER OF THIS ACTION.

**Attorneys for the State of Colorado, Department of Natural Resources, Division of Parks and Wildlife:** John W. Suthers, Attorney General, Tim Monahan, First Assistant Attorney General, #16971, Beth Van Vurst, Assistant Attorney General, #36931, 1525 Sherman Street, 7th Floor, Denver, CO 80203, Telephone: (303) 866-5861 Mr. Monahan, (303) 866-5054 Ms. Van Vurst, Fax: (303) 866-3558, E-Mail: Tim.Monahan@state.co.us, Beth.Vanvurst@state.co.us, \*Counsel of Record Case Number: 2011 CW 186 **SUMMONS (BY PUBLICATION)** **THE PEOPLE OF THE STATE OF COLORADO** **TO THE ABOVE-NAMED DEFENDANTS:** This matter includes an action to quiet title of the Defendant/Counterclaimant/Cross Claimant, the State of Colorado, Department of Natural Resources, Division of Parks and Wildlife ("CPW") in and to the real property situated in Yuma County, Colorado, more particularly described as the Hale Ditch, Priority No. 38

as decreed in Kit Carson County District Court Case No. 2985 on September 8, 1938 (hereinafter, the "Hale Ditch"). The South Fork of the Republican River is the source of water for the Hale Ditch. You are hereby summoned and required to appear and defend against the claims of the complaint and the counterclaims and cross claims raised by CPW in its Answer, filed with the court in this action, by filing with the clerk of this court an answer or other response. You are required to file your answer or other response within 35 days after the service of this Summons upon you. Service of this summons shall be complete on the day of the last publication. A copy of the complaint and CPW's Answer, including the counterclaims and cross-claims made by CPW, may be obtained from the clerk of the court. If you fail to file your answer or other response within 35 days after the date of the last publication, judgment by default may be rendered against you by the court for the relief demanded in the complaint, including through CPW's cross claims and counterclaims, without further notice. Dated: January 25, 2012 Published in the Greeley Tribune and Yuma Pioneer newspapers First Publication: February 2, 2012, Last Publication: March 1, 2012

#### COMBINED NOTICE - PUBLICATION CRS §38-38-103 FORECLOSURE SALE NO. 2011-1566

To Whom It May Concern: This Notice is given with regard to the following described Deed of Trust: On December 6, 2011, the undersigned Public Trustee caused the Notice of Election and Demand relating to the Deed of Trust described below to be recorded in the County of Yuma records. Original Grantor(s): Katarzyna D. Bukowski and Walenty Bukowski Original Beneficiary(ies): Pikes Peak National Bank Current Holder of Evidence of Debt: Pikes Peak National Bank Date of Deed of Trust: 5/7/1999 County of Recording: Yuma Recording Date of Deed of Trust: 5/13/1999 Recording Information(Reception Number and/or Book/Page Number): 494768 Original Principal Amount: \$475,000.00 Outstanding Principal Balance: \$223,219.81 Pursuant to CRS §38-38-101(4)(i), you are hereby notified that the covenants of the deed of trust have been violated as follows: failure to pay principal and interest when due together with all other payments provided for in the evidence of debt secured by the deed of trust and other violations thereof.

**THE LIEN FORECLOSED MAY NOT BE A FIRST LIEN. LEGION PARK ADDITION TO THE TOWN OF YUMA, COLORADO BLOCK 1: NORTH 15 FEET OF LOT 6 AND ALL OF LOTS 7 AND 8** Also known by street and number as: 421 W 8th Avenue, Yuma, CO 80759. **THE PROPERTY DESCRIBED HEREIN IS ALL OF THE PROPERTY CURRENTLY ENCUMBERED BY THE LIEN OF THE DEED OF TRUST.**

#### NOTICE OF SALE

The current holder of the Evidence of Debt secured by the Deed of Trust, described herein, has filed Notice of Election and Demand for sale as provided by law and in said Deed of Trust. THEREFORE, Notice Is Hereby Given that I will at public auction, at 10:00 AM on Wednesday, 04/04/2012, at West Front Steps of Yuma County Courthouse, sell to the highest and best bidder for cash, the said real property and all interest of the said Grantor(s), Grantor(s)' heirs and assigns therein, for the purpose of paying the indebtedness provided in said Evidence of Debt secured by the Deed of Trust, plus attorneys' fees, the expenses of sale and other items allowed by law, and will issue to the purchaser a Certificate of Purchase, all as provided by law. First Publication 2/9/2012 Last Publication 3/8/2012 Name of Publication The Yuma Pioneer DATE: 12/06/2011 Dee Ann Stults, Public Trustee in and for the County of Yuma, State of Colorado The name, address, business telephone number and bar registration number of the attorney(s) representing the legal holder of the indebtedness is: ROTHGERBER JOHNSON & LYONS LLP Stephen T. Johnson Reg.No. 10226 1200 17th Street Suite 3000 Denver Colorado 80202 303.623.9000 Attorney File # 58509-133 The Attorney above is acting as a debt collector and is attempting to collect a debt. Any information provided may be used for that purpose.

**NOTICE TO CREDITORS**  
Estate of Chris John Kerbs, aka Chris Kerbs, Deceased Case Number 12 PR 8 All persons having claims against the above-named estate are required to present them to the Personal Representative or to District Court of Yuma County, Colorado on or before June 16, 2012, or the claims may be forever barred. Judith Kerbs 906 South Cedar Street Yuma, CO 80759 First Date of Publication: February 16, 2012

Last Date of Publication: March 1, 2012 Name of Publication: The Yuma Pioneer, Inc.

#### PUBLIC NOTICE OF PETITION FOR CHANGE OF NAME

Public Notice is given on 2-15-12 that a Petition for a Change of Name of a Minor Child has been filed with the Yuma County Court. The Petition requests that the name of Lexi Jo Cunningham be changed to Lexi Jo Imhof Myra J. Clemons. Clerk of Court First Publication: February 23, 2012 Last Date of Publication: March 8, 2012 Name of Publication: The Yuma Pioneer, Inc.

#### A CALL FOR NOMINATIONS (NOTICE BY PUBLICATION OF)

32-1-804.1; 32-1-804.3, 1-1-104(34), 32-1-905(2), C.R.S. **TO WHOM IT MAY CONCERN,** and, particularly, to the electors of the Yuma Rural Fire Protection District of Yuma and Washington County(ies), Colorado.

**NOTICE IS HEREBY GIVEN** that an election will be held on the 8th day of May, 2012, between the hours of 7:00 a.m. and 7:00 p.m. At that time, two (2) directors will be elected to serve 4-year terms and three (3) directors will be elected to serve 2-year\* terms. Eligible electors of the Yuma Rural Fire Protection District interested in serving on the board of directors may obtain a Self-Nomination and Acceptance form from the District Designated Election Official (DEO): Rose M Schmidt (Designated Election Official) PO Box 248; Yuma CO 80759 (DEO Address) 115 E. 3rd Street; Yuma CO 80759 (DEO Address) 970-848-5539 (DEO Telephone)

The Office of the DEO is open on the following days: Monday through Friday from 9:00 a.m. to 4:00 p.m. If the DEO determines that a Self-Nomination and Acceptance form is not sufficient, the eligible elector who submitted the form may amend the form once, at any time, prior to 3:00 p.m. on Friday, March 2, 2012. The deadline to submit a Self-Nomination and Acceptance is close of business on **Friday, March 2, 2012** (not less than 67 days before the election). Earlier submittal is encouraged as the deadline will not permit curing an insufficient form. Affidavit of Intent To Be A Write-In-Candidate forms must be submitted to the office of the designated election official by the close of business on **Monday, March 5, 2012** (the sixty-fourth day before the election).

**NOTICE IS FURTHER GIVEN,** an application for a mail-in ballot shall be filed with the designated election official no later than the close of business on **Friday, May 4, 2012**, except that, if the applicant wishes to receive the mail-in ballot by mail, the application shall be filed no later than the close of business on **Tuesday, May 1, 2012.** Yuma Rural Fire Protection District Rose M Schmidt Designated Election Official Signature Date of Publication: February 23, 2012 Name of Publication: The Yuma Pioneer, Inc.

#### PUBLIC NOTICE

**Tri-State Generation and Transmission Association, Inc., Notice of Intent To Hold Public Scoping Meetings and Prepare an Environmental Assessment SUMMARY:** The Rural Utilities Service (RUS), an agency of the United States Department of Agriculture, intends to hold public scoping meetings and prepare an Environmental Assessment (EA) to meet its responsibilities under the National Environmental Policy Act (NEPA) and 7 CFR part 1794 in connection with potential impacts related to a proposed project in Colorado by Tri-State Generation and Transmission Association, Inc. (Tri-State). The proposed Burlington-Wray 230-kilovolt (kV) Transmission Project (proposed action) consists of the following: a proposed new single-circuit 230-kV electric transmission line between the existing Burlington Substation in Kit Carson County and the existing Wray Substation in Yuma County. Tri-State is requesting that RUS provide financial assistance for the proposed action. **DATES:** RUS will conduct public scoping meetings in an open house format to provide information and solicit comments for the preparation of the EA. The scoping meetings will be held on the following dates: Tuesday, March 6, 2012, from 5:00-8:00PM at the Burlington Community Center, 340 South

14th Street, Burlington, Colorado 80807; Wednesday, March 7, 2012, 5:00-8:00PM at the Wray Roundhouse, 245 West 4th Street, Wray, Colorado 80758. All written questions and comments must be received by RUS by April 6, 2012. **ADDRESSES:** To send comments or for further information, contact: Dennis Rankin, Environmental Protection Specialist, USDA Rural Utilities Service, at 1400 Independence Avenue, SW., Washington, DC 20250-1571, or e-mail: dennis.rankin@wdc.usda.gov. An Alternative Evaluation Study (AES) and Macro Corridor Study (MCS) have been prepared for the proposed project. All documents are available for review prior to and at the public scoping meetings. The reports are available at the RUS address provided in this notice and on the agency's Web site: <http://www.rurdev.usda.gov/UWP-ea.htm>. The documents are also available for review at the offices of Tri-State and its member cooperatives K.C. Electric Association and Y-W Electric Association. In addition, the following repositories will have the AES and MCS available for public review: Tri-State Generation and Transmission, 1100 West 116th Avenue, Westminster, Colorado 80234-2814 K.C. Electric Association 281 Main Street, Stratton, Colorado 80836 Y-W Electric Association, 1016 Grants Way, Wray, Colorado 80758-1915 Wray Public Library, 301 W. 7th St. Wray, Colorado 80758 Burlington Public Library, 321 14th Street Burlington, CO 80807. **SUPPLEMENTARY INFORMATION:** The primary purpose for the proposed action is to alleviate transmission system limitations in eastern Colorado, improve Tri-State's ability to dispatch existing generation resources in eastern Colorado, and improve Tri-State's ability to deliver energy to native load customers. The proposed action also would provide a transmission outlet for renewable energy generation in eastern Colorado. Tri-State is seeking funding from RUS for the proposed action. Prior to making a financial decision about whether to provide financial assistance for a proposed project, RUS is required to conduct an environmental review under the NEPA in accordance with the RUS policies and procedures codified in 7 CFR part 1794. Government agencies, private organizations, and the public are invited to participate in the planning and analysis of the proposed action. Representatives from the RUS and Tri-State will be available at the scoping meetings to discuss the environmental review process, describe the proposed action, discuss the scope of environmental issues to be considered, answer questions, and accept comments. RUS will use comments and input provided by government agencies, private organizations, and the public in the preparation of the Draft EA. If RUS finds, based on the EA, that the proposed action will not have a significant effect on the quality of the human environment, RUS will prepare a Finding of No Significant Impact (FONSI). Public notification of a FONSI would be published in the Federal Register and in newspapers with circulation in the project area. RUS may take its final action on proposed actions requiring an EA (§1794.23) any time after publication of application notices that a FONSI has been made and any required review period has expired. When substantive comments are received on the EA, RUS may provide an additional period (15 days) for public review following the publication of its FONSI determination. Final action will not be taken until this review period has expired. Where appropriate to carry out the purposes of NEPA, RUS may impose, on a case-by-case basis, additional requirements associated with the preparation of an EA. If at any point in the preparation of an EA, RUS determines that the proposed action will have a significant effect on the quality of the human environment, the preparation of an Environmental Impact Statement will be required. Any final action by RUS related to the proposed action will be subject to, and contingent upon, compliance with all relevant Federal, State, and local environmental laws and regulations and completion of the environmental review requirements as prescribed in the RUS Environmental Policies and Procedures (7 CFR part 1794). Date of Publication: February 23, 2012 Name of Publication: The Yuma Pioneer, Inc.



**Legal Notices are due by 5 p.m. Monday.**

## Just a Reminder!

Demo Day is Saturday, February 25th the fun begins at 10:00 am with Melissa - Kristy - Rachael - Mary Ellen Melissa will teach her Bountiful Bag class following lunch.

Please preregister at 332-5556 at Granma's Treasures - 301 Main • Wray, CO



# We're Curious . . .

**For those people who wish they had more time to get their stuff done, this is their year. 2012 is a leap year, which happens every four years, to make sure the calendar and the astronomical changes still line up. So, we get one more day in February.**

**If you could have one more of something you already have, what would it be?**



**Kathy Drescher**  
Another pair of shoes.



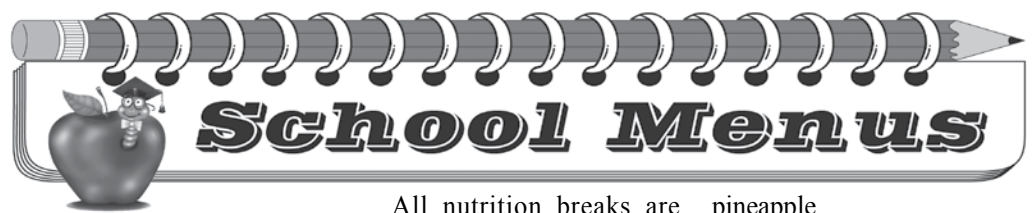
**Riley Holmes**  
Another championship with the team.



**Greg Hallagin**  
Another daughter to treat like she's my only daughter.



**Melissa Blandford**  
A horse.



## BES breakfast menu

Burlington elementary school breakfast menus for Feb. 27 to March 2:  
Monday, Feb. 27: Yogurt, graham crackers, banana  
Tuesday, Feb. 28: Oatmeal breakfast round, juice  
Wednesday, Feb. 29: French toast, apple  
Thursday, March 1: Hard boiled eggs, grapes  
Friday, March 2: String cheese, graham crackers, juice  
All meals include milk.

## BES lunch menu

Burlington Elementary School lunch menus for Feb. 27 to March 2:  
Monday, Feb. 27: Salisbury steak, mashed potatoes, brown gravy, bread, mixed fruit  
Tuesday, Feb. 28: Barbecue pork sandwich, pickles, potato salad, peaches  
Wednesday, Feb. 29: Taco soup, tortilla chips, cheese, sour cream, pineapple and oranges  
Thursday, March 1: Spaghetti, salad, bread sticks, peaches  
Friday, March 2: Macaroni and cheese, green beans, apples, bread  
All meals include milk.

## BMS and BHS lunch menu

Burlington middle and high school lunch menus for Feb. 27 to March 2:  
Monday, Feb. 27: Pigs in a blanket, baked beans, corn chips, peaches  
Tuesday, Feb. 28: Hamburger deluxe, french fries, applesauce  
Wednesday, Feb. 29: Chicken fajitas, fiesta rice, diced pears, birthday cake  
Thursday, March 1: Nacho supreme, corn, strawberry banana fruit mix  
Friday, March 2: Tuna salad, potato chips, hot rolls/butter, oranges, Rice Krispy Treats  
All meals are served with 1/2 pint milk.

## Stratton Elementary nutrition break menu

Stratton Elementary nutrition break menu for Feb. 27 to Feb. 29:  
Monday, Feb. 27: Waffles  
Tuesday, Feb. 28: Ham and cheese English muffin  
Wednesday, Feb. 29: Eggs and sausage

All nutrition breaks are served with juice or milk.  
Menu is subject to change without notice.

## Stratton Elementary lunch menu

Stratton Elementary lunch menus for Feb. 27 to Feb. 29:  
Monday, Feb. 27: Tacos  
Tuesday, Feb. 28: Sloppy joes  
Wednesday, Feb. 29: Beef stroganoff  
All lunches are served with fruit, vegetable, and half pint milk.  
Menu is subject to change without notice.

## Stratton MS and HS breakfast menu

Stratton middle and high school breakfast menu for Feb. 27 to Feb. 29:  
Monday, Feb. 27: Waffles  
Tuesday, Feb. 28: Ham and cheese English muffin  
Wednesday, Feb. 29: Egg and sausage  
All meals are served with milk.

## Stratton MS and HS lunch menu

Stratton middle and high school lunch menu for Feb. 27 to Feb. 29:  
Monday, Feb. 27: Tacos  
Tuesday, Feb. 28: Sloppy joes  
Wednesday, Feb. 29: Beef stroganoff  
All lunches are served with fruit, vegetable, salad bar, and half pint milk.

## Hi-Plains ES and HS breakfast menu

Hi-Plains elementary and high school breakfast menus for Feb. 28 to Feb. 29:  
Tuesday, Feb. 28: Sausage links, scrambled eggs, toast  
Wednesday, Feb. 29: Hash brown potatoes, sausage links  
All breakfasts served with fruit, juice and milk.  
There will be peanut butter sandwiches offered at the high school each day.

## Hi-Plains ES and HS lunch menu

Hi-Plains elementary and high school lunch menus for Feb. 28 to Feb. 29:  
Tuesday, Feb. 28: Hamburger on a bun, oven fries, lettuce and tomato, onions, dill pickles, catsup, mustard,

pineapple  
Wednesday, Feb. 29: Scaloped potatoes with ham, salad, green beans, rolls, pears  
All lunches served with milk.  
Menus are subject to change.

## Bethune breakfast menu

Bethune School breakfast menus for Feb. 27 to March 2:  
Monday, Feb. 27: Late start, no breakfast  
Tuesday, Feb. 28: Omelet  
Wednesday, Feb. 29: French toast  
Thursday, March 1: Ham and cheese breakfast sandwich  
Friday, March 2: Cereal  
All menus served with fruit, juice, and milk.  
Menus subject to change without notice.

## Bethune lunch menu

Bethune School lunch menus for Feb. 27 to March 2:  
Monday, Feb. 27: Tater tot casserole  
Tuesday, Feb. 28: Pizza  
Wednesday, Feb. 29: Tacos  
Thursday, March 1: Baked chicken  
Friday, March 2: Sloppy joes  
All menus served with vegetables, fruit, milk.  
Menus subject to change without notice.

## Idalia breakfast menu

Following is the breakfast menu for Idalia School students for Feb. 27 to Feb. 29:  
Monday, Feb. 27: Pancake sandwich, yogurt, applesauce  
Tuesday, Feb. 28: Cereal, toast, yogurt, mixed fruit  
Wednesday, Feb. 29: Ham and egg sandwich, yogurt, mandarin oranges  
All meals served with milk or juice.

## Idalia lunch menu

Following is the lunch menu for Idalia School students for Feb. 27 to Feb. 29:  
Monday, Feb. 27: Chicken sandwiches, potato wedges, broccoli, banana  
Tuesday, Feb. 28: Roast pork, mashed potatoes, corn, roll, pineapple  
Wednesday, Feb. 29: Chili, cheese sticks, celery, cinnamon rolls, apples



## CONTACT INFORMATION

## Colorado U.S. Congressional Delegation

### Senator Mark Udall (D)

United States Senate  
Hart Senate Burlington ste. HS- 317  
Washington, D.C. 20510-0605  
DC Phone: 202-224-5941  
DC Fax: 202-224-6471  
E-mail: Senator\_Mark\_Udall@mark-udall.senate.gov  
Homepage: http://markudall.senate.gov  
District Office:  
999 18th St. North Tower ste. 1525  
Denver, CO 80202  
Voice: 303-650-7820  
Fax: 303-650-7827

### Senator Michael F. Bennet (D)

United States Senate  
702 Hart Senate Office Bldg.  
Washington, D.C. 20510-0606  
DC Phone: 202-224-5852  
DC Fax: 202-228-5036  
E-mail: Senator\_Bennet@bennet.senate.gov  
Homepage:  
http://bennetsenate.gov/public/  
District Office:  
North Central-High Plains  
Office  
1200 South College Avenue, Suite 211  
Fort Collins, CO 80524  
Phone: 970-224-2200  
Fax: 970-224-2205



### Sen. Greg Brophy (R)

**District 1**  
Office Location: 200 E. Colfax  
Denver, CO 80203  
Capitol Phone: 303-866-6360  
E-mail: greg@gregbrophy.net

### Rep. Jon Becker (R)

**District 63**  
Office Location: 200 E. Colfax  
Denver, CO 80203  
Capitol Phone: (303)866-2906  
E-mail: jon.becker.house@state.co.us

## Colorado State Government

### Governor

#### John Hickenlooper

136 State Capitol  
Denver, CO 80203-1792  
Phone: 303-866-2471  
Fax: 303-866-2003  
e-mail: support@www.Colorado.gov

### Lt. Governor

#### Joseph Garcia

130 State Capitol  
Denver, CO 80203-1792  
Phone: 303-866-2087  
Fax: 303-866-5469  
e-mail: support@www.Colorado.gov

### Attorney General

#### John Suthers

1525 Sherman St., Fifth Floor  
Denver, CO 80203  
Phone: 303-866-4500  
Fax: 303-866-5691  
e-mail: attorney.general@state.co.us

### District 1

#### Rep. Diana DeGette (D)

United States House of Representatives  
2335 Rayburn House Office Bldg.  
Washington, D.C. 20515-0601  
DC Phone: 202-225-4431  
DC Fax: 202-225-5657  
E-mail: http://www.house.gov/formdegette/zip\_auth.htm  
Homepage:  
http://degette.house.gov/  
District Office:  
600 Grant Street, Suite 202  
Denver, CO 80203  
Voice: 303-844-4988  
Fax: 303-844-4996

### District 2

#### Rep. Jared Polis (D)

United States House of Representatives  
501 Cannon House Office Bldg.  
Washington, D.C. 20515-0602  
DC Phone: 202-225-2161  
DC Fax: 202-226-7840  
E-mail: https://forms.house.gov/polis/contact-form.shtml  
Homepage:  
http://polis.house.gov/  
District Office:  
4770 Baseline Drive, Suite 220  
Westminster, CO 80303  
Voice: 303-484-9596

### District 3

#### Rep. Scott R. Tipton (R)

United States House of Representatives  
218 Cannon House Office Bldg.  
Washington, D.C. 20515-0603  
DC Phone: 202-225-4761  
DC Fax: 202-226-9669  
E-mail: https://tipton.house.gov/contact-me/email-me  
Homepage:  
http://tipton.house.gov  
District Office:  
225 North 5th St., Suite 702  
Grand Junction, CO 81501  
609 Main St., No. 6  
Alamosa, CO  
Voice 719-587-5137

Fax: (719) 587-5137

### District 4

#### Rep. Cory Gardner (R)

United States House of Representatives  
213 Cannon House Office Bldg.  
Washington, D.C. 20515-0604  
DC Phone: 202-225-4676  
DC Fax: 202-225-5870  
E-mail: https://gardner.house.gov/contact-me/email-me  
Homepage:  
http://gardner.house.gov/  
District Office:  
123 N. College Ave., Suite 220  
Voice: 970-221-7110  
FAX: 970-221-7240

### District 5

#### Rep. Doug Lamborn (R)

United States House of Representatives  
437 Cannon House Office Bldg.  
Washington, D.C. 20515-0605  
DC Phone: 202-225-4422  
DC Fax: 202-226-2638  
E-mail: http://lamborn.house.gov/Zip-Auth.aspx  
Homepage:  
http://lamborn.house.gov/  
District Office:  
1271 Kelly Johnson Blvd., Suite 110  
Colorado Springs, CO 80920 -Voice:  
719-520-0055  
Fax: 719-520-0840  
415 Main St.  
Buena Vista, O 81211

### District 6

#### Rep. Mike Coffman (R)

United States House of Representatives  
1222 Longworth House Office Bldg.  
Washington, D.C. 20515-0606  
DC Phone: 202-225-7882  
DC Fax: 202-226-4623  
E-mail: https://forms.house.gov/coffman/contact-form.shtml  
Homepage:  
http://coffman.house.gov/  
Twitter: @prepmikecoffman  
District Office:  
9220 Kimmber Drive, Suite 220  
Lone Tree, CO 80124  
Voice: 720-283-9772  
Fax: 720-283-9776

### District 7

#### Rep. Ed Perlmutter (D)

United States House of Representatives  
1221 Longworth House Office Bldg.  
Washington, D.C. 20515-0607  
DC Phone: 202-225-2645  
DC Fax: 202-225-5278  
E-mail: https://forms.house.gov/perlmutter/webforms/contact.shtml  
Homepage:  
http://perlmutter.house.gov/  
Twitter: @RepPerlmutter  
District Office:  
12600 West Colfax Avenue, Suite 8400  
Lakewood, CO 80215  
Voice: 303-274-7944  
Fax: 303-274-6455

## Kit Carson County Commissioners

### District #1

**Jim Whitmore** (719) 397-2426

### District #2

**Dave Gwyn** (719) 348-5437

### District #3

**Dave Hornung** (719) 348-5655

Office Phone (719) 346-8133  
(719) 346-8139  
Office Fax- (719) 346-7242  
E-mail - kccadmin@kitcarsoncounty.org



### State Treasurer

#### Walker Stapleton

140 State Capitol  
Denver, CO 80203  
Phone: 303-866-2441  
Fax: 303-866-2123  
e-mail: treasurer.stapleton@state.co.us

### Secretary of State

#### Scott Gessler

1700 Broadway  
Denver, CO 80290  
Phone: 303-894-2200  
Fax: 303-869-4860  
e-mail: elections@sos.state.co.us



## NOTICE

Petition forms for the nomination of Directors to the Board of Plains Cooperative Telephone Association, Inc. can be picked up at the telephone office in Joes, Colorado, beginning February 20, 2012. Directors for the Cope, Kirk and Seibert Exchanges will be elected at the Annual Meeting on April 19, 2012, at the Idalia School, 26845 County Road 9.2, Idalia, Colorado. Nominating petitions must be returned to the Association office by March 6, 2012, with fifteen (15) valid member signatures.

**Call 970-358-4211 for more information.**

## NOTICE OF PUBLIC SCOPING MEETINGS

### BURLINGTON COMMUNITY & EDUCATION CENTER

340 SOUTH 14<sup>TH</sup> STREET  
BURLINGTON, CO 80807

MARCH 6, 2012

ANYTIME BETWEEN 5:00 – 8:00 PM

### WRAY ROUNDHOUSE

245 WEST 4<sup>TH</sup> STREET  
WRAY, CO 80758

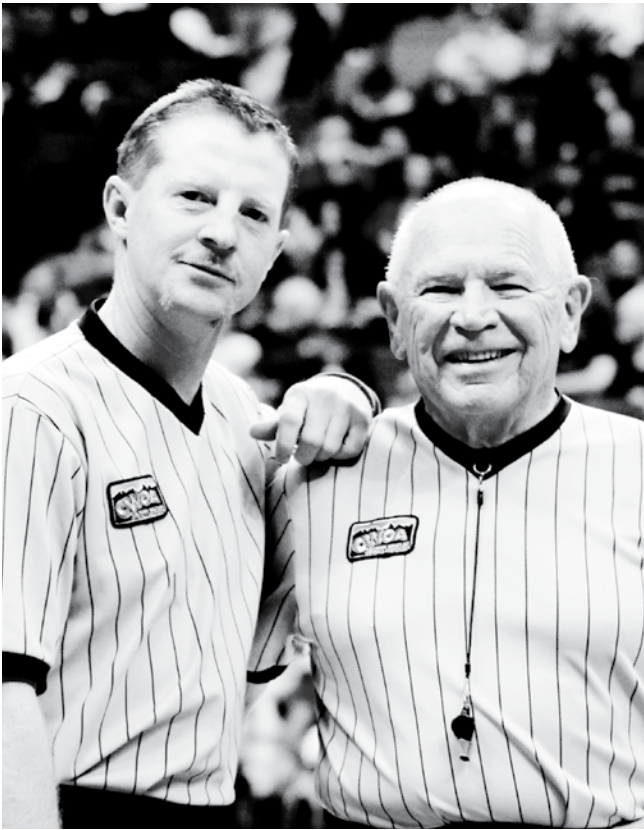
MARCH 7, 2012

ANYTIME BETWEEN 5:00 – 8:00 PM

The United States Department of Agriculture's Rural Utilities Service (RUS) and Tri-State Generation and Transmission Association, Inc. (Tri-State), invite you to attend a public scoping meeting to review and comment on the proposed Burlington-Wray 230-kilovolt (kV) Transmission Project in eastern Colorado. RUS is holding public scoping meetings and preparing an Environmental Assessment (EA) to meet its responsibilities under the National Environmental Policy Act (NEPA) and 7 CFR part 1794 in connection with potential impacts related to Tri-State's proposed project. The Burlington-Wray 230-kilovolt (kV) Transmission Project (proposed action) consists of constructing a new single-circuit 230-kV electric transmission line between the existing Burlington Substation in Kit Carson County and the existing Wray Substation in Yuma County. Tri-State is requesting that RUS provide financial assistance for the proposed action. RUS will conduct public scoping meetings in an open house format to provide information and solicit comments for the preparation of the EA. Please note there are no formal presentations at the scoping meetings. Detailed maps depicting changes to corridor alignments, preliminary route alternatives, and other information will be available at the meetings for review anytime between 5:00 PM and 8:00 PM. For further information, please refer to the Public Notice published in the Legal Notices section of this edition of the newspaper.



HISTORY OF EXCELLENCE



Wrestling referee L.D. Powell, left, poses with Jerry Moore who was honored for his 38 years of officiating during the 2012 state high school wrestling tournament. (Andy Harvey photo)

PUBLIC NOTICE

Tri-State Generation and Transmission Association, Inc., Notice of Intent To Hold Public Scoping Meetings and Prepare an Environmental Assessment

**SUMMARY:** The Rural Utilities Service (RUS), an agency of the United States Department of Agriculture, intends to hold public scoping meetings and prepare an Environmental Assessment (EA) to meet its responsibilities under the National Environmental Policy Act (NEPA) and 7 CFR part 1794 in connection with potential impacts related to a proposed project in Colorado by Tri-State Generation and Transmission Association, Inc. (Tri-State). The proposed Burlington-Wray 230-kilovolt (kV) Transmission Project (proposed action) consists of the following: a proposed new single-circuit 230-kV electric transmission line between the existing Burlington Substation in Kit Carson County and the existing Wray Substation in Yuma County. Tri-State is requesting that RUS provide financial assistance for the proposed action.

**DATES:** RUS will conduct public scoping meetings in an open house format to provide information and solicit comments for the preparation of the EA. The scoping meetings will be held on the following dates: Tuesday, March 6, 2012, from 5:00-8:00PM at the Burlington Community and Education Center, 340 South 14th Street, Burlington, Colorado 80807; Wednesday, March 7, 2012, 5:00-8:00 PM at the Wray Roundhouse, 245 West 4th Street, Wray, Colorado 80758. All written questions and comments must be received by RUS by April 6, 2012.

**ADDRESSES:** To send comments or for further information, contact: Dennis Rankin, Environmental Protection Specialist, USDA Rural Utilities Service, at 1400 Independence Avenue, SW., Washington, DC 20250-1571, or e-mail: [dennis.rankin@wdc.usda.gov](mailto:dennis.rankin@wdc.usda.gov). An Alternative Evaluation Study (AES) and Macro Corridor Study (MCS) have been prepared for the proposed project. All documents are available for review prior to and at the public scoping meetings. The reports are available at the RUS address provided in this notice and on the agency's Web site: <http://www.rurdev.usda.gov/UWP-ea.htm>. The documents are also available for review at the offices of Tri-State and its member cooperatives K.C. Electric Association and Y-W Electric Association. In addition, the following repositories will have the AES and MCS available for public review:

Tri-State Generation and Transmission,  
1100 West 116th Avenue, Westminster, Colorado 80234-2814

K.C. Electric Association  
281 Main Street, Stratton, Colorado 80836  
Y-W Electric Association, 1016 Grants Way, Wray, Colorado 80758-1915

Wray Public Library, 301 W. 7th St. Wray, Colorado 80758  
Burlington Public Library, 321 14th Street Burlington, CO 80807.

**SUPPLEMENTARY INFORMATION:** The primary purpose for the proposed action is to alleviate transmission system limitations in eastern Colorado, improve Tri-State's ability to dispatch existing generation resources in eastern Colorado, and improve Tri-State's ability to deliver energy to native load customers. The proposed action also would provide a transmission outlet for renewable energy generation in eastern Colorado. Tri-State is seeking funding from RUS for the proposed action. Prior to making a financial decision about whether to provide financial assistance for a proposed project, RUS is required to conduct an environmental review under the NEPA in accordance with the RUS policies and procedures codified in 7 CFR part 1794. Government agencies, private organizations, and the public are invited to participate in the planning and analysis of the proposed action. Representatives from the RUS and Tri-State will be available at the scoping meetings to discuss the environmental review process, describe the proposed action, discuss the scope of environmental issues to be considered, answer questions, and accept comments. RUS will use comments and input provided by government agencies, private organizations, and the public in the preparation of the Draft EA. If RUS finds, based on the EA, that the proposed action will not have a significant effect on the quality of the human environment, RUS will prepare a Finding of No Significant Impact (FONSI). Public notification of a FONSI would be published in the Federal Register and in newspapers with circulation in the project area. RUS may take its final action on proposed actions requiring an EA (\$1794.23) any time after publication of application notices that a FONSI has been made and any required review period has expired. When substantive comments are received on the EA, RUS may provide an additional period (15 days) for public review following the publication of its FONSI determination. Final action will not be taken until this review period has expired. Where appropriate to carry out the purposes of NEPA, RUS may impose, on a case-by-case basis, additional requirements associated with the preparation of an EA. If at any point in the preparation of an EA, RUS determines that the proposed action will have a significant effect on the quality of the human environment, the preparation of an Environmental Impact Statement will be required. Any final action by RUS related to the proposed action will be subject to, and contingent upon, compliance with all relevant Federal, State, and local environmental laws and regulations and completion of the environmental review requirements as prescribed in the RUS Environmental Policies and Procedures (7 CFR part 1794).  
Date Published: Feb. 23, 2012

YOUR PHOTOS



Burlington fifth graders participating in the Burlington Activities Department traveling basketball program competed in the Northeast Colorado league tournament held in Fort Morgan this past weekend. The team battled against five others to earn their third place trophy. Pictured left to right: Micah Hanson, Kaden Meurisse, coach Dalene Colglazier, Conner Colglazier, Ethan Richman, and Traevon Nunnally. Missing from photo are Braxton Corman and Lucas Rush-Witzel. Dalene Colglazier shared this photo with us. We invite you to send in your photos to be published in The Burlington Record, see details on page 2C.

Good for you

Hornung and Wells receive degrees

Stratton High School graduates attending Fort Hayes State University at Hays, Kan. have completed the requirements for degrees during the fall 2011 semester.

Stephen Hornung received a bachelor of science degree in agriculture (agronomy).

Stacie Wells received a bachelor of science degree in psychology.

Stephen is the son of Terry and Shelley Hornung of Stratton.

Stacie is the daughter of Gerald and Jill Masters of Stratton.

May on honor roll

Stratton resident Jordan May earned placement on the Gonzaga University president's list for the fall 2011 semester.

GU is a private Catholic University at Spokane, Wash. and students must earn a 3.7 to 4.0 grade point average to be listed.

Jordan's parents are Tom and Kim May of Stratton.

Friends Don't Let Friends Drive Drunk.

Turn in a pusher.  
Report a  
Meth Lab.

**METH KILLS**  
It destroys lives and families.

Up to  
\$1,000 reward  
for anonymous tips.  
Call if you see  
suspicious activity, smell  
ether or ammonia.

**BURLINGTON CRIME STOPPERS**  
(719) 346-5332

RAILE GELBIEH/BALANCER®  
BULL & FEMALE SALE

Burlington Livestock Exchange, Burlington, CO  
March 8, 2012 • 7:30 PM VET

SELLING 60 BALANCER SPRING & FALL BULLS

The Denver NWSD Blue Bell (Including our Family Unit)

A SELECT GROUP OF 25  
COMMERCIAL & REGISTERED  
1ST CALF HEIFER PAIRS.

- Black & Red
- Ignity Pro-lined
- P. negative
- Trich tested
- Semen tested



Y4 MAH 128Y



MR. OUTLINE 163Y



YUKON 167Y

**BALANCER SIRE:** EGL U409 (SAY Nat. Worth 4200)  
EGL U708 (EGL Northern Wind F068 ET)  
TAU Mr n focus 12W (Mytty n focus)

**ANGUS SIRE:** Happs Look At Me (MCC Look Out 650)  
Lee's Outline 7047 (DCC Outline 472)

CALL FOR A CATALOG:

Request a Catalog (Print & Mail): Cody & Pamela's Cattle  
Phone: 785-332-2758 • Cell: 785-332-4347 • Fax: 785-332-6099  
785 Road 1 • St. Francis, KS 67356  
Website: [www.legends100m.com](http://www.legends100m.com) • Email: [cmcc@legends100m.com](mailto:cmcc@legends100m.com)

WANTED: 5 HOMES

TO APPLY MT. STATES COMPOSITE SIDING  
5 homeowners in this general area will be  
given the opportunity to have

MT. STATES COMPOSITE SIDING

Applied to their home with decorative trim at a very low cost. This amazing new product has captured the interest of homeowners throughout the United States who are fed up with constant painting and maintenance costs. Backed with fade and lifetime material warranty, and providing full insulation, summer and winter, this product can be installed on every type of home. It comes in a choice of colors and is now being offered to the local market. Your home can be a showplace in your vicinity. We will make it worth your while if we can use your home.

Financing Available WAC "Offer Limited-CALL NOW!"

INSULATED WINDOWS ALSO AVAILABLE

For an appointment, please call toll free:

1-888-540-0334

Nationwide Builders

3 Generations of Experience-www.nbcindustries.com



State Farm Insurance - Ken Viken Agency  
and The Burlington Record present:

"Good Neighbear Award"

Please nominate a friend, neighbor, relation,  
or even a stranger who you believe deserves  
recognition for his or her generosity,  
helpfulness, and caring nature.

Nominee: \_\_\_\_\_

Address: \_\_\_\_\_ Phone: \_\_\_\_\_

Briefly describe why you believe this person is a "Good Neighbear". Attach  
additional information sheet if needed.

\_\_\_\_\_  
\_\_\_\_\_  
\_\_\_\_\_  
\_\_\_\_\_  
\_\_\_\_\_

State Farm Insurance - Ken Viken Agency will donate \$50 in honor of the  
chosen "Good Neighbear Award" winner to a charity of your choice.

Charity of Choice: \_\_\_\_\_

Charity Address: \_\_\_\_\_

Submitted by: \_\_\_\_\_

Address: \_\_\_\_\_ Phone: \_\_\_\_\_

Return Form to:  
State Farm Insurance  
P.O. Box 69  
Burlington, CO 80807

Email:  
[ken.viken.b7ce@statefarm.com](mailto:ken.viken.b7ce@statefarm.com)  
Call: 719-346-8602

Deadline to enter is third Friday of each month. Winner will be published in the first edition of the month.

Not enough cream  
in your cup?



Fill it up with a  
COSCAN or CDAN  
STATEWIDE

Classified or  
Display Advertisement.

Ask us, or this  
newspaper, how to  
REACH more than  
1.2 million readers in  
100 local papers  
in Colorado.

Colorado Press Service  
303-571-5117



Recycle  
for Your  
Future

Rock Island Railroad  
Depot - 10-16-1966

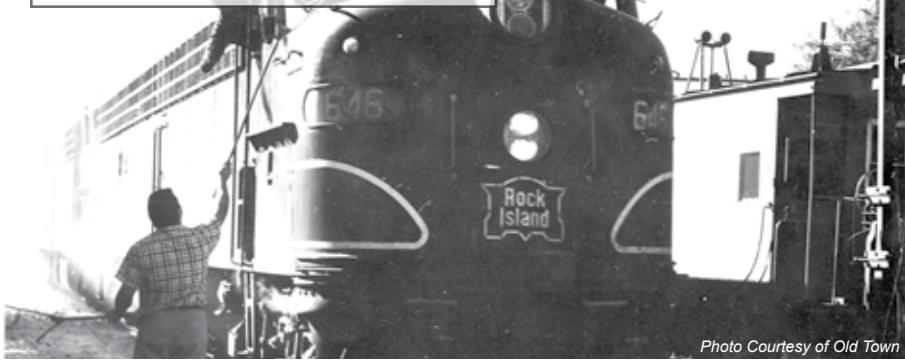


Photo Courtesy of Old Town

Brown and Latimer

Funeral Home and Monuments

A new way of business based on time honored traditions

2910 Senter Ave. Burlington, Colorado (719) 346-6005

Bill Latimer

Jimmy R. Brown

Doren Whitmore



**APPENDIX C**  
**LANDOWNER NOTICE POSTCARD**

## INVITATION TO ATTEND PUBLIC SCOPING MEETINGS

### **BURLINGTON COMMUNITY CENTER**

340 SOUTH 14<sup>TH</sup> STREET  
BURLINGTON, CO 80807  
MARCH 6, 2012  
ANYTIME BETWEEN 5:00 – 8:00 PM

### **WRAY ROUNDHOUSE**

245 WEST 4<sup>TH</sup> STREET  
WRAY, CO 80758  
MARCH 7, 2012  
ANYTIME BETWEEN 5:00 – 8:00 PM

The United States Department of Agriculture's Rural Utilities Service (RUS) and Tri-State Generation and Transmission Association, Inc. (Tri-State), invite you to attend a public scoping meeting to review and comment on the proposed Burlington-Wray 230-kilovolt (kV) Transmission Project in eastern Colorado. RUS is holding public scoping meetings and preparing an Environmental Assessment (EA) to meet its responsibilities under the National Environmental Policy Act (NEPA) and 7 CFR part 1794 in connection with potential impacts related to Tri-State's proposed project. The Burlington-Wray 230-kilovolt (kV) Transmission Project (proposed action) consists of constructing a new single-circuit 230-kV electric transmission line between the existing Burlington Substation in Kit Carson County and the existing Wray Substation in Yuma County. Tri-State is requesting that RUS provide financial assistance for the proposed action. RUS will conduct public scoping meetings in an open house format to provide information and solicit comments for the preparation of the EA. To send comments or for further information, contact: Dennis Rankin, Environmental Protection Specialist, USDA Rural Utilities Service, Stop 1571, Room 2244, 1400 Independence Avenue, SW., Washington, DC 20250-1571, or e-mail: [dennis.rankin@wdc.usda.gov](mailto:dennis.rankin@wdc.usda.gov). All written questions and comments must be received by RUS by April 6, 2012. More information also is available online at <http://www.burlingtonwray.com> or by calling 855-442-3330.

You have been identified as a landowner of property included in the project Study Area. Detailed maps depicting changes to corridor alignments, preliminary route alternatives, and other information will be available at the meetings for review anytime between 5:00 PM and 8:00 PM. Updated maps will be available at the Web site listed above on March 5, 2012.





**APPENDIX D**  
**LETTERS SENT TO AGENCIES**

<b>Last Name</b>	<b>First Name</b>	<b>Agency</b>	<b>Address 1</b>	<b>Address 2</b>	<b>City</b>	<b>State</b>	<b>Zip</b>
Alvarez	Kelly	Kit Carson County	PO Box 160		Burlington	Colorado	80807
Attardo	Chuck	Colorado Department of Transportation	18500 East Colfax Avenue		Aurora	Colorado	80011-8017
Briggs	Linda	Yuma County	310 Ash	Suite A	Wray	Colorado	80758
Bushner	Trent	Yuma County	310 Ash	Suite A	Wray	Colorado	80758
Chick	Cory	Colorado Division of Wildlife	4255 Sinton Road		Colorado Springs	Colorado	80907
Churchwell	Bob	Burlington City	415 15th Street		Burlington	Colorado	80807
Dorman	Lauren	Burlington City	415 15th Street		Burlington	Colorado	80807
Duran	Pat	Yuma County	PO Box 244		Yuma	Colorado	80759
Geerdes	John	Colorado State Parks	4255 Sinton Road		Colorado Springs	Colorado	80907
Gwyn	Dave	Kit Carson County	PO Box 160		Burlington	Colorado	80807
Holmes	Stan	City of Wray	PO Box 35		Wray	Colorado	80758
Hornung	Dave	Kit Carson County	PO Box 160		Burlington	Colorado	80807
Hoya	Myron	Colorado Department of Transportation	1420 2nd Street		Greeley	Colorado	80631
Linner	Susan	U.S. Fish and Wildlife Service	P.O. Box 25486	Denver Federal Center	Denver	Colorado	80225
Melby	Josh	Colorado Division of Wildlife	122 East Edison		Brush	Colorado	80723
Pollart	Mike	Colorado State Land Board	700 South Main Street		Lamar	Colorado	81052
Skalla	Danny	Colorado State Land Board	301 Poplar Street	Ste. 3	Sterling	Colorado	80751
Weeks	Paula	Kit Carson County	PO Box 160		Burlington	Colorado	80807
Whitmore	Jim	Kit Carson County	PO Box 160		Burlington	Colorado	80807
Wiley	Robin	Yuma County	310 Ash	Suite A	Wray	Colorado	80758
Wingfield	Dean	Yuma County	310 Ash	Suite A	Wray	Colorado	80758



**TRI-STATE GENERATION AND TRANSMISSION ASSOCIATION, INC.**

1100 W. 116TH AVENUE • P.O. BOX 33695 • DENVER, COLORADO 80233 • 303-452-6111

February 13, 2012

Name  
Title  
Address 1  
Address 2  
City, State, Zip Code

RE: Invitation to Public Meeting

Mr./Ms. Last Name:

The United States Department of Agriculture's Rural Utilities Service (RUS) and Tri-State Generation and Transmission Association, Inc. (Tri-State), invite you to attend a public scoping meeting to review and comment on the proposed Burlington-Wray 230-kilovolt (kV) Transmission Project in eastern Colorado. RUS is holding public scoping meetings and preparing an Environmental Assessment (EA) to meet its responsibilities under the National Environmental Policy Act (NEPA) and 7 CFR part 1794 in connection with potential impacts related to Tri-State's proposed project. The Burlington-Wray 230-kilovolt (kV) Transmission Project (proposed action) consists of constructing a new single-circuit 230-kV electric transmission line between the existing Burlington Substation in Kit Carson County and the existing Wray Substation in Yuma County. Tri-State is requesting that RUS provide financial assistance for the proposed action. RUS will conduct public scoping meetings in an open house format to provide information and solicit comments for the preparation of the EA. Please note there are no formal presentations at the scoping meetings. Meetings will be held:

- Tuesday, March 6, 2012, 5:00-8:00PM, at the Burlington Community Center, 340 South 14<sup>th</sup> Street, Burlington, Colorado 80807
- Wednesday, March 7, 2012, 5:00-8:00PM, at the Wray Roundhouse, 245 West 4<sup>th</sup> Street, Wray, Colorado 80758

The meetings will mark the beginning of the formal NEPA scoping process. All written questions and comments must be received by RUS by April 6, 2012. For more information about the public meeting or the proposed Project, please contact Laurie Spears, Tri-State Environmental Planner, at 303-254-3597 or by email at [lspears@tristategt.org](mailto:lspears@tristategt.org). More information is available at <http://www.burlingtonwray.com>.

Sincerely,

Laurie Spears  
Environmental Planner  
Tri-State Generation and Transmission Association, Inc.

AN EQUAL OPPORTUNITY / AFFIRMATIVE ACTION EMPLOYER

A Touchstone Energy® Cooperative



CRAIG STATION  
P.O. BOX 1307  
CRAIG, CO 81626-1307  
970-824-4411

ESCALANTE STATION  
P.O. BOX 577  
PREWITT, NM 87045  
505-876-2271

NUCLA STATION  
P.O. BOX 698  
NUCLA, CO 81424-0698  
970-864-7316

**APPENDIX E**  
**SCOPING MEETING SIGN-IN SHEETS**

A wide banner featuring a stylized illustration of a transmission tower on the left against a blue sky. The rest of the banner has a background of a sunset or sunrise over a landscape, with the text "Burlington - Wray" in large blue letters and "230-kV Transmission Project" in smaller yellow letters below it.[illegible]

## Sign-In Sheet for Burlington Public Scoping Meeting March 6, 2012

[illegible]

**APPENDIX F**  
**SCOPING MEETING MATERIALS**





# Burlington - Wray

## 230-kV Transmission Project

## PROJECT OVERVIEW

### What is the Burlington-Wray Project?

Tri-State Generation and Transmission Association, Inc. (Tri-State) is proposing to construct a new, single-circuit 230-kilovolt (kV) electric transmission line from the existing Burlington Substation in Kit Carson County to the existing Wray Substation in Yuma County. The new transmission line would be approximately 55 to 70 miles long and would occur in portions of both Kit Carson and Yuma Counties. Depending on field conditions, the line would be constructed primarily on wood H-frame structures.

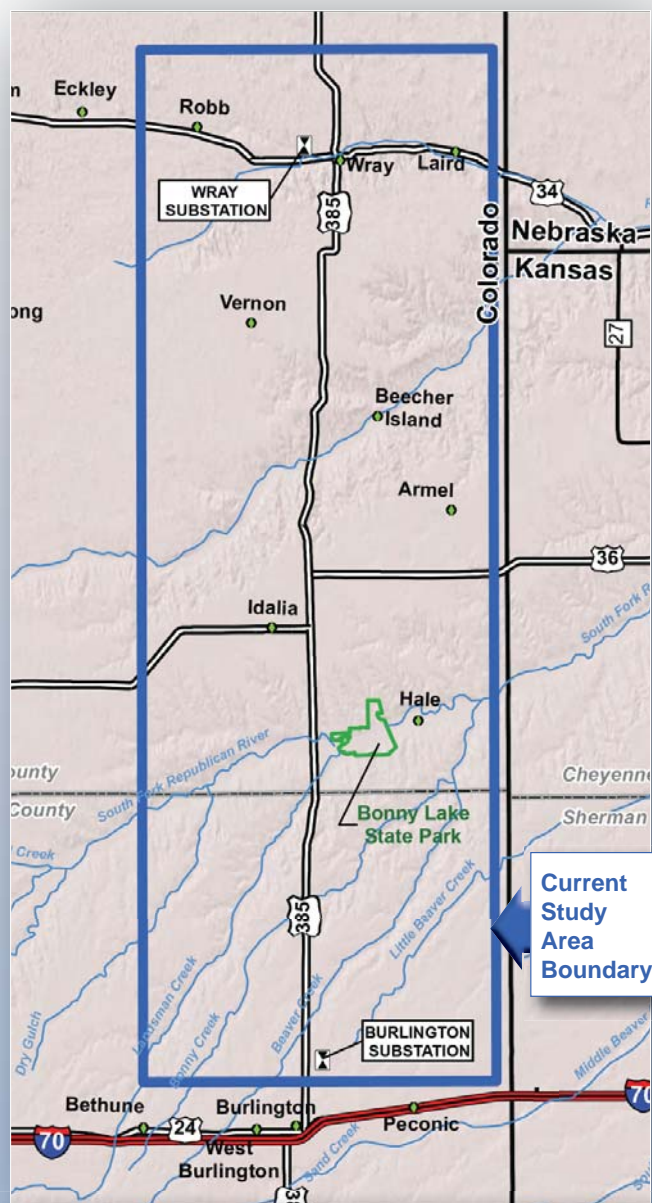
### Why is the Project Needed?

The existing transmission system in northeastern Colorado is strained as a result of increased electricity demand and new generation resources. Dispatch of local generation is limited due to overloading conditions on the existing 115-kV Burlington-Wray transmission line. This system overload also inhibits accommodation of new power generation sources, such as new wind power projects.

### Project Benefits

The new transmission line would:

- Relieve area transmission constraints
- Improve bulk electrical system reliability
- Allow full dispatch of local generation
- Enable more economical and reliable load serving
- Accommodate renewable energy growth



Tri-State is currently evaluating corridor alternatives within an approximately 1,000 square mile Study Area in portions of Kit Carson and Yuma Counties. The Project will terminate at the existing Burlington Substation and the existing Wray Substation.

Tri-State is a not-for-profit wholesale power supply cooperative that provides power to 44 member distribution systems that serve major parts of Colorado, Nebraska, Wyoming, and New Mexico. Tri-State is the Project proponent and developer.

The member rural electric cooperatives involved in the Burlington to Wray Project are K.C. Electric Association and Y-W Electric Association. These cooperatives distribute electricity to customers in eastern Colorado, including Kit Carson and Yuma Counties.

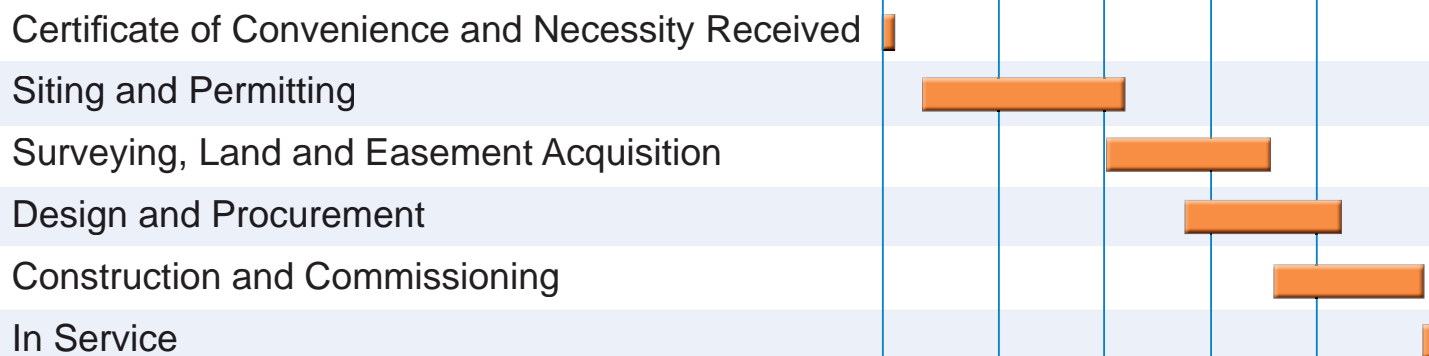
Project funding is being sought from the U.S. Department of Agriculture's Rural Utilities Service (RUS). RUS helps rural utilities expand and keep their infrastructure up-to-date by providing payments, grants, loans and loan guarantees for the development and commercialization of vital utility services. RUS's programs revitalize rural communities with a variety of infrastructure improvements, and create sustainable opportunities for wealth, new jobs, and increased economic activity in rural America. RUS is a federal government entity, and is the Lead Federal Agency for this Project.





## Project Schedule\*

2011 2012 2013 2014 2015



\* Project Schedule will be reviewed as necessary

## How is the Project Reviewed and Approved?

### Federal Review and Approvals

- Prepare an Environmental Assessment to comply with the National Environmental Policy Act
- Comply with Section 110 of the National Historic Preservation Act
- Consult with the U.S. Fish and Wildlife Service per Section 7 of the Endangered Species Act

### State Review and Approvals

Tri-State was granted a Certificate of Public Convenience and Necessity from the Colorado Public Utilities Commission in January 2011.

### Local Approvals

Yuma County: Major Land Use Permit

Kit Carson County: Land Use Permit

In addition, Tri-State will seek and obtain all other necessary permits & approvals for the proposed Project.

## How is the Public Involved?



Tri-State and RUS will conduct several public meetings to provide information about the Burlington-Wray 230-kV Transmission Project and solicit public input.

### Planned Public Meetings

### Timeframe

Informational Meeting (complete)	September 20 & 21, 2011
Public Scoping Meeting	March 6 & 7, 2012
Route Refinement Workshops	Second quarter of 2012



# Burlington - Wray

## 230-kV Transmission Project

## Federal Review Process

Tri-State Generation and Transmission Association Inc. (Tri-State) is requesting financial assistance for the proposed Burlington-Wray 230 kilovolt (kV) Transmission Line Project (Project) from the U.S. Department of Agriculture Rural Utilities Service (RUS). RUS is a federal government agency, and is responsible for ensuring the Project complies with the National Environmental Policy Act (NEPA). NEPA requires federal agencies to review the environmental effects of their proposed action prior to making decisions. Two major purposes of the environmental review process under NEPA are to reach better informed decisions and to allow for citizen involvement. RUS will evaluate the potential environmental effects of the Burlington-Wray Project by preparing an Environmental Assessment (EA) with public scoping prior to making a decision about whether to approve Tri-State's funding request.

### Who is RUS?

RUS is a federal agency that helps rural utilities expand and keep their infrastructure up-to-date by providing payments, grants, loans and loan guarantees for the development and commercialization of vital utility services. RUS's programs revitalize rural communities with a variety of infrastructure improvements, and create sustainable opportunities for wealth, new jobs, and increased economic activity in rural America. RUS is the Lead Federal Agency for this Project responsible for ensuring the Project complies with all federal regulations.



## Elements of an EA

EAs are concise documents that determine the significance of the Project's environmental effects. The Burlington-Wray EA will:

- Describe the Project
- Discuss the purpose of and need for the Project
- Discuss alternative courses of action
- Analyze the impacts of the Project and Project Alternatives on the environment
- List agencies and persons consulted during EA preparation

The EA will evaluate the Project's potential effects on environmental resources such as:

- Land use
- Threatened and endangered species
- Wetlands/Floodplains
- Cultural and historic properties
- Socioeconomics
- Scenic areas
- Aesthetic resources, such as visual or noise impacts
- Transportation
- Water quality



## What is NEPA?

- The National Environmental Policy Act (NEPA) is a federal law that requires all federal agencies to consider the potential effects of their proposed actions to the human and natural environments.
- NEPA promotes better agency decision-making by ensuring that high quality information is available to officials and the public before the agency decides whether and how to implement a federal action.
- Through the NEPA process, the public has an opportunity to learn about the proposed action and to provide information and comments.
- Many projects are required to conduct environmental analysis and prepare an Environmental Assessment or an Environmental Impact Statement (EIS). An EIS is the highest, most detailed level of analysis.
- The NEPA process is typically followed on project such as proposed airports, mines, buildings, military complexes, energy facilities, railroad and highways when these projects include a federal action, including a federal decision to provide financial assistance for the project.

## Other Federal Review, Permits, and Approvals



In addition to NEPA, RUS is responsible for compliance of the Project with the National Historic Preservation Act (NHPA) and the Endangered Species Act (ESA). Section 106 of NHPA requires federal agencies to consider the effects of their actions on historic properties. Section 7 of the ESA requires federal agencies to evaluate potential Project impacts to species that are listed under the ESA and to consult with the U.S. Fish and Wildlife Service.

Other federal permits or approvals that may be required for the Project include approvals from the Federal Aviation Administration (Title 14 Code of Federal Regulations [CFR] Part 77, Objects Affecting Navigable Airspace) and a Nationwide Permit from the U.S. Army Corps of Engineers (Section 404 of the Clean Water Act). Tri-State will consult with the appropriate agencies and obtain all applicable federal permits and approvals necessary for the Burlington-Wray Project.





# Burlington - Wray

## 230-kV Transmission Project

## Engineering and Electric Transmission

Load growth and new generation resources, including wind power, have put a strain on the existing transmission system of the eastern plains of Colorado.

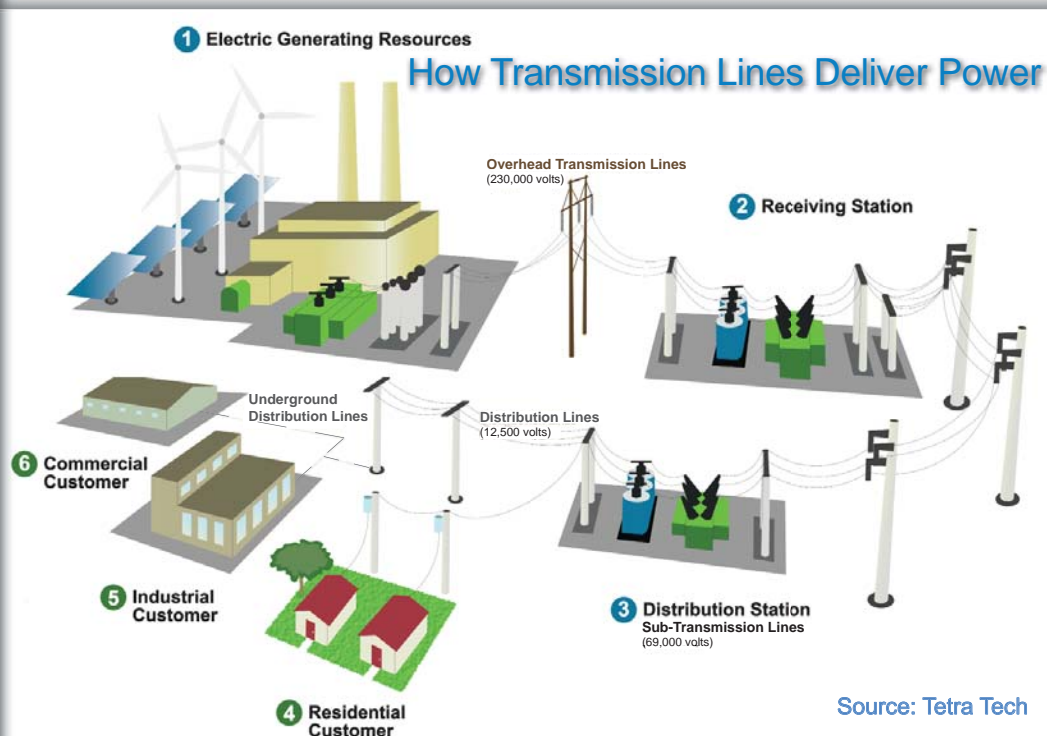
**The proposed Burlington-Wray 230-kilovolt (kV) transmission line would:**

- Relieve area transmission constraints
- Improve bulk electrical system reliability
- Allow full dispatch of local generation
- Enable more economical and reliable load serving
- Extend approximately 55-70 miles in portions of Kit Carson and Yuma Counties between existing substations
- Support proposed renewable energy development in the region



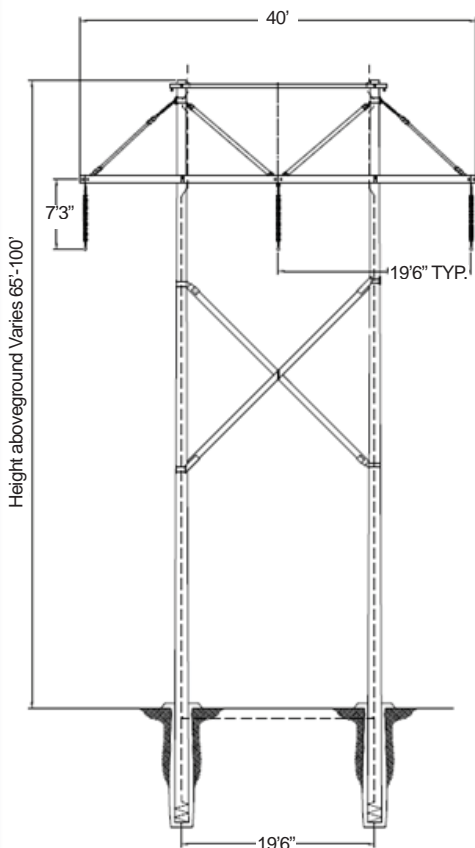
## How Does Electric Transmission Work?

Electricity generation sources include wind, solar, natural gas, fossil fuel, and nuclear generation resources. Generation facilities output electricity at voltages of 13 to 24 kilovolts (kV) and use transformers to step up power to transmission voltages of 115, 230, 345, or 500 kV. Transmission lines rated above 230 kV are normally classified as bulk lines and are capable of carrying large amounts of power over long distances. As voltage increases, current decreases, allowing the electricity to be more efficiently transmitted across extended distances by transmission lines to a substation.



Source: Tetra Tech

Commonly used transmission line voltages cannot be used by households or businesses. Distribution substations step high voltages down to a distributable voltage. From the substations, electricity is carried via distribution lines at lower voltages (12.5 to 34.5 kV). Distribution lines carry the electricity to small pole mounted or pad mounted transformers that convert the electricity to a usable voltage (110 and 220 volts) in residences and commercial businesses.



## Design and Construction

Design Component	Wood H-Frame Structures
ROW Width	150 feet
Distance Between Structures	600 - 1,100 feet
Aboveground Structure Height	65 - 100 feet
Number of Structures per Mile	6-9
Ground Clearance Beneath Conductor at Maximum Operating Conditions	28 feet

Primary design of the line is using wood H-frames, although alternate structures may be used in isolated circumstances. Tri-State will hire a contractor to construct the transmission line. Construction would be completed in several phases: access development, staging materials, framing, and erecting the structures, stringing conductor, and reclamation. Several work phases may be in progress simultaneously at different locations along the alignment. Construction of the transmission line is expected to last approximately 14 to 18 months.



The proposed transmission line would complete a 230-kV path by connecting an existing 230-kV line that runs between Fort Morgan and Wray, to another existing 230-kV line that extends from Burlington to Limon.

## Electric Field & Noise Information

Electric fields have the potential to cause nuisance electrical shocks, caused by "induced voltage." Linear metallic facilities such as pipelines or fences that are relatively close and parallel the transmission lines for appreciable distances should be periodically grounded. Electric fields at ground level would not exceed the limits of the National Electrical Safety Code. While many activities are compatible with transmission line rights-of-way, precautions must be taken when operating near electrical equipment.

Corona is the electrical breakdown of the air into charged particles near high-voltage conductors. The charged particles can cause audible noise as well as radio and television interference, which is more noticeable in wet conditions. Audible noise levels dissipate as the distance increases from the transmission line.



# Burlington - Wray

## 230-kV Transmission Project

## Route Siting, Selection, and Permitting

Tri-State Generation and Transmission Association, Inc. (Tri-State) is proposing to build a single-circuit 230-kilovolt (kV) transmission line from the existing Burlington Substation to the existing Wray Substation. The proposed line would be built and operated by Tri-State.

The Study Area for the proposed Project was delineated based on the required transmission interconnections at the existing substations, and includes portions of Kit Carson and Yuma Counties. Tri-State uses a comprehensive process when siting transmission lines that considers electric system planning, economics, environmental and cultural resources, public involvement, regulatory issues, land use, and engineering input. Generally, the siting process occurs in three phases:

### Identification of Preliminary Corridors Phase: COMPLETE

- Step 1.** Define the project Study Area based on required interconnection points.
- Step 2.** Obtain resource data and conduct an opportunity and constraint analysis to identify Opportunity, Avoidance, and Exclusion Areas.
- Step 3.** Identify preliminary alternative corridors.
- Step 4.** Seek public input on preliminary alternative corridors and coordinate with agencies.

### Identification of Preliminary Routes Phase: CURRENT

- Step 1.** Address specific concerns identified by the public, such as resource data or sensitive areas, by adding, modifying, or removing preliminary corridors in order to identify alternative routes.
- Step 2:** Conduct preliminary field reconnaissance to identify additional routing opportunities and/or constraints.
- Step 3:** Present the revised corridor alternatives and preliminary alternative routes at public meetings for review and comment by the public and agencies.

### Route Refinement Phase: FUTURE

- Step 1.** Address specific concerns identified by the public, such as resource data or sensitive areas, by adding, modifying, or removing preliminary alternative routes.
- Step 2:** Refine preliminary alternative routes and conduct a comparative analysis of the routes.
- Step 3:** Present the comparative analysis and refined alternative routes to the public and agencies for review and comment at public route refinement meetings.

### Identification of Preferred and Alternative Routes Phase: FUTURE

- Step 1.** Use public comments and stakeholder concerns from the route refinement meetings to make final adjustments to the refined alternative routes
- Step 2:** Identify a Preferred Route and feasible alternatives based on the comparative analysis, public and agency input, and results of route refinement.
- Step 3:** Evaluate the Preferred and Alternative Routes under the National Environmental Policy Act and obtain other required permits and approvals.

## Data Collection and Evaluation

As an initial step of the Siting Process, Tri-State collected various data to identify and evaluate opportunities and constraints in the Study Area. Resource data were studied and mapped using a Geographic Information System (GIS). Data were analyzed in the following categories:

- Land use and jurisdiction
- Existing linear transportation and utility corridors
- Water resources
- Recorded cultural and historic resources
- Biological resources

Once these data were mapped using GIS, Tri-State was able to identify Opportunity, Avoidance, and Exclusion Areas within the Study Area and identify preliminary alternative corridors.







## OPPORTUNITIES

Opportunity areas include existing linear features and associated corridors that may provide opportunities for alignment of the transmission line. These areas contain existing land uses that may be compatible with the Project. Examples include:

- Roads and highways
- Railroads
- Natural gas and oil pipelines
- Other existing electric transmission lines
- Property line boundaries

## CONSTRAINTS

Avoidance areas include sensitive areas that potentially could incur environmental impacts or result in land use conflicts if directly affected by the Project.

Exclusion Areas are locations with the highest level of sensitivity, including those areas with regulatory or legislative designations or extreme physical constraints not compatible with construction, operation, or maintenance of the Project. Examples of typical constraints include:

- Wetland or riparian areas
- Mechanical irrigation structures
- Designated critical habitat
- Mineral resources activity areas
- Archaeological sites
- State parks, national parks
- Incompatible, rough terrain
- Airports
- Communication towers

## Project Approvals

JURISDICTION	PERMIT/APPROVAL
<b>Federal</b>	
U.S. Department of Agriculture, Rural Utilities Service	National Environmental Policy Act Section 106 Compliance with the National Historic Preservation Act (NHPA)
Federal Aviation Administration	Title 14 CFR Part 77, Objects Affecting Navigable Airspace
U.S. Army Corps of Engineers	Clean Water Act, Section 404/Nationwide Permits (as applicable)
U.S. Fish and Wildlife Service	Section 7 Consultation under the Endangered Species Act
<b>State</b>	
Colorado Public Utilities Commission	Certificate of Public Convenience and Necessity
Colorado Department of Public Health and Environment	Construction General Stormwater Permit and Stormwater Pollution Prevention Plan Section 401 Water Quality Certification
Colorado Department of Transportation	Access Permits, as necessary
Colorado State Historic Preservation Office	Determination of Compliance with NHPA Section 106
<b>Local</b>	
Kit Carson County	Development and Building Permit
Yuma County	Major Land Use Permit
Municipalities	Construction Permits, as necessary



# Burlington - Wray

## 230-kV Transmission Project

## Working with Landowners

An easement is a permanent right that would authorize Tri-State Generation and Transmission Association, Inc. (Tri-State) to use the right-of-way (ROW) to build and maintain a transmission line on private or public property. A ROW is the land area that would be acquired by a utility for the transmission line. The ROW for the Burlington-Wray Project would vary, and is developed based on several factors including the voltage of the transmission line, structure spacing, conductor tension, operational safety, and maintenance. Safety requirements are determined by the National Electric Safety Code (NESC) and the Rural Utilities Service (RUS). For this project, the ROW generally required would be 150 feet. Tri-State typically contracts with qualified land management and acquisition consultants to obtain the easements.

Temporary access or survey permission from landowners is requested in order for Tri-State to conduct applicable environmental, cultural, land and geotechnical surveys which are needed in order to complete a detailed assessment of the transmission line alignment.

### Establishing Rights-of-Ways

The goal for all transmission line projects is to identify a route that balances the need for reliable electric service with environmental concerns, public acceptance, engineering needs, economics, and legal and regulatory requirements.

Tri-State's objective is to work closely with landowners to negotiate easement terms. When negotiations are unsuccessful, as an electric utility Tri-State may have to exercise its eminent domain authority. Fortunately, these are rare cases.

Should a property be subject to a conservation easement, Tri-State will check the terms of the easement; allowable uses of a conservation easement typically include power lines and other public utilities.

Present project to landowners during siting process



Request survey permission and temporary access for applicable environmental, cultural, land and geotechnical surveys



Determine property value using market data from recent sales of similar properties



Work with landowners to reach a fair and reasonable settlement for the granted easement

## Easements and Agriculture



**Center Pivots** – Tri-State will place structures to avoid irrigation equipment and its operation to the extent possible. Structures will normally be placed on the outer edges of the pivot and be sized to span the edges of the irrigation area. Any impacts to pivots will be negotiated with the individual landowner.



**Planting and Harvesting** – Tri-State will work with individual landowners to avoid construction or line maintenance during the planting & harvesting seasons. If damage to crops cannot be avoided, compensation for crop loss will be offered.



**Livestock** – During construction, segments of fences may be removed or gates installed to facilitate the access or use of construction equipment. Tri-State will construct temporary fences and work with landowners to minimize impacts to livestock and their safety.





## Transmission Line Design Details

The width of a transmission line ROW is based on the voltage of the line, height and width of structures, spacing between structures, and design and safety considerations. ROW widths shall meet the design and safety requirements of the NESC and/or RUS.

An easement for the long-term operation and maintenance of the transmission line and short-term construction requirements are usually required for new power lines. The easement also addresses access to the line during the facility's operational life.

**The Burlington-Wray 230-kV Project will be constructed with the following design components:**



Design Component	Wood H-Frame Structures	Additional Information
ROW Width	150 feet	The width of an easement is intended to contain the conductor movement under all design conditions and meet all established NESC/RUS safety requirements.
Distance Between Structures (span length)	600 - 1,100 feet	Span lengths are maximized where possible, in order to minimize the number of structures. Structures may be placed to take advantage of terrain features, property lines, land use, etc.
Aboveground Structure Height	65 - 100 feet	Structure heights are dependent upon the line tensions, span lengths, ground clearance, etc.
Number of Structures per Mile	6 - 9	Lines with shorter structures or spans require more structures per mile.
Minimum Ground Clearance Beneath Conductor (i.e., Wires)	28 feet	In accordance with the NESC and RUS, the energized conductors shall meet the safety requirements when the lines reach maximum operational temperatures. Ground clearance will be increased as appropriate to allow for the elevation of the line, snow levels, and other engineering considerations.



# Burlington - Wray

## 230-kV Transmission Project

# Birds and Power Lines

## Avian Protection



*Nest management programs include installing perch and nesting deterrents on structures, and installing nest boxes or platforms in safe areas on or near structures*

Tri-State Generation and Transmission Association (Tri-State) uses several strategies to reduce the number of birds that are injured or killed when they contact power lines or electrical equipment. These strategies include:

- Conducting risk assessments for collision potential during planning
- Using avian safe designs, where feasible
- Monitoring existing lines and substations for avian issues
- Training for maintenance and engineering departments on avian issues and mitigation

Utilities try to minimize the risk of injury to birds, damage to electrical equipment, and outages to customers that may result when birds come in contact with power lines or their structures. Tri-State is developing a system-wide Avian Protection Plan (APP) to address and minimize bird interactions with the company's equipment and power lines.

## Roosting and Nest Management

Transmission line structures and equipment are attractive to birds for roosting and nesting. Tri-State implements a variety of perch management approaches on structures to protect the birds and prevent power outages caused by bird interactions.

Nest management programs include installing perch deterrents and nesting deterrents on structures, and installing nest boxes or platforms in safe areas on or near structures. Additionally, Tri-State's APP sets an established reporting protocol by which co-op personnel report avian issues to Tri-State's environmental department, which then coordinates with the U.S. Fish and Wildlife Service to remove or relocate nests when appropriate.

## Collision Minimization Measures

Bird species have the potential to collide with power line wires. In general, the top wires (the static wires) pose the greatest risk for collision. The static wires are smaller than the electrical conductors and can be more difficult for birds to see and avoid. To minimize the risk of birds colliding with power lines, Tri-State implements several measures including:

- Consider clustering lines during the planning process to increase visibility
- Locate lines away from known flyways and important habitats, if possible
- Utilize structure configurations that minimize collision risk in sensitive areas where feasible
- Marking lines to make them more visible to birds in flight
- Monitoring collisions on existing lines through the reporting system established as part of the APP





## Marking Lines

Marking lines with various types of markers can decrease but not eliminate bird collisions. The different types of markers vary in effectiveness. The decision to utilize markers is based on:

- Effectiveness
- Line voltage rating
- Line location
- Durability
- Ease of installation

Examples of these devices are shown in the photos.

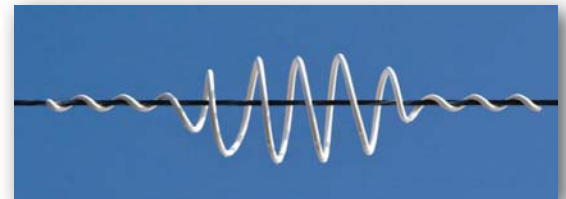
## Electrocution

Electrocution of birds typically is not associated with transmission lines of 115 kilovolts and higher. The electrical components generally are far enough apart that a bird can avoid contact with two of them at once, thereby avoiding fatally completing a circuit. Problems that do arise can be corrected in two primary ways:

- Isolation: Moving the components farther apart to get the necessary clearance
- Insulation: Using covers or cover-up materials on various electrical components to prevent direct contact with the component that would cause the electrocution
- For additional information regarding birds and power lines, visit the Avian Power Line Interaction Committee Web site at [www.aplic.org](http://www.aplic.org).

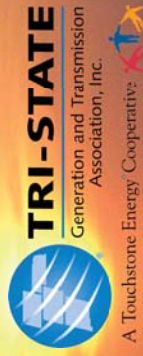


*Installation of swan flight diverters (above)*





# Burlington - Wray 230-kV Transmission Project



## Project Overview

### What is the Burlington-Wray Project?

Tri-State Generation and Transmission Association, Inc. (Tri-State) is proposing to construct a new, single-circuit 230-kilovolt (kV) electric transmission line from the existing Burlington Substation in Kit Carson County to the existing Wray Substation in Yuma County. The new transmission line would be approximately 55 to 70 miles long and would occur in portions of both Kit Carson and Yuma Counties. Depending on field conditions, the line would primarily be constructed on wood H-frame structures.

### Why is the Project Needed?

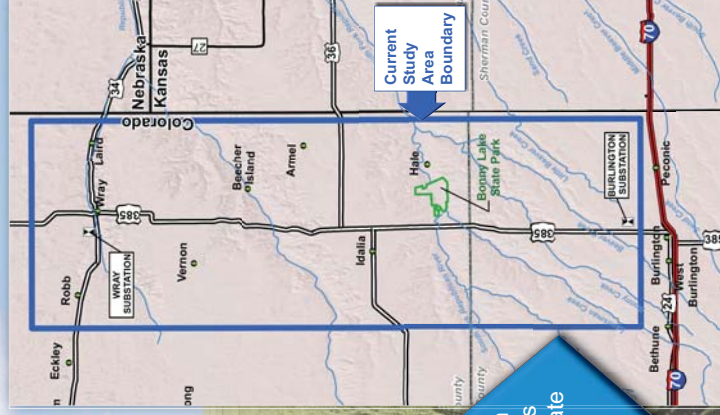
The existing transmission system in northeastern Colorado is strained as a result of increased electricity demand and new generation resources. Dispatch of local generation is limited due to overloading conditions on the existing 115-kV Burlington-Wray transmission line. This system overload also inhibits accommodation of new power generation sources, such as new wind power projects.

### Project Benefits

The new transmission line would:

- Relieve area transmission constraints
- Improve bulk electric system reliability
- Allow full dispatch of local generation
- Enable more economical and reliable load serving
- Accommodate renewable energy growth

Tri-State is currently evaluating corridor alternatives within an approximately 1,000 square mile Study Area in portions of Kit Carson and Yuma Counties. The Project will terminate at the existing Burlington Substation and the existing Wray Substation.



Project Schedule	2011	2012	2013	2014	2015
Certificate of Convenience and Necessity Received					
Siting and Permitting					
Surveying, Land and Easement Acquisition					
Design and Procurement					
Construction and Commissioning					
In Service					

### How is the Project Reviewed and Approved?

#### Federal Review and Approvals

- Prepare an Environmental Assessment to comply with the National Environmental Policy Act
- Comply with Section 110 of the National Historic Preservation Act
- Consult with the U.S. Fish and Wildlife Service per Section 7 of the Endangered Species Act

#### State Review and Approvals

Tri-State was granted a Certificate of Public Convenience and Necessity from the Colorado Public Utilities Commission in January 2011.

#### Local Approvals

Yuma County: Major Land Use Permit  
Kit Carson County: Land Use Permit

In addition, Tri-State will seek and obtain all other necessary permits and approvals for the proposed Project.

### How is the Public Involved?



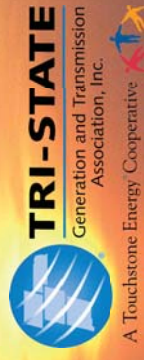
Tri-State and RUS will conduct several public meetings to provide information about the Burlington-Wray 230-kV Transmission Project and solicit public input.

Planned Public Meetings	Timeframe
Informational Meeting	September 20 & 21, 2011
Public Scoping Meeting	March 6 & 7, 2012
Route Refinement Workshops	Second Quarter of 2012



# Burlington - Wray

## 230-kV Transmission Project



## Federal Review Process

Tri-State Generation and Transmission Association, Inc. (Tri-State) is requesting financial assistance for the proposed Project from the U.S. Department of Agriculture Rural Utilities Service (RUS). RUS is a federal government agency, and is responsible for ensuring the Project complies with the National Environmental Policy Act (NEPA). NEPA requires federal agencies to evaluate the environmental effects of their proposed action prior to making decisions. Two major purposes of the environmental review process under NEPA are to reach better informed decisions and to allow for citizen involvement. RUS will evaluate the potential environmental effects of the Project by preparing an Environmental Assessment (EA) with public scoping.

EAs are concise documents that determine the significance of the Project's environmental effects.

### The Burlington-Wray EA will

- Describe the Project
- Discuss the purpose of and need for the Project
- Discuss alternative courses of action
- Analyze the impacts of the Project and Project Alternatives on the environment
- List agencies and persons consulted during EA preparation

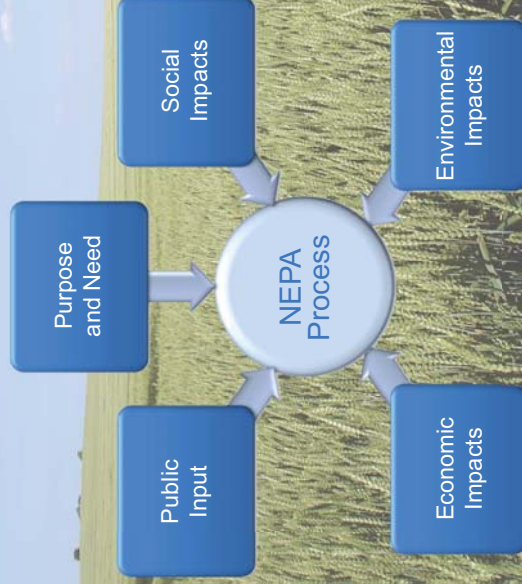
### The EA will evaluate the Project's potential effects on environmental resources such as:

- Land use
- Threatened and endangered species
- Wetlands/floodplains
- Cultural and historic properties
- Socioeconomics
- Scenic areas
- Aesthetic resources
- Transportation
- Water quality



## Who is RUS?

U.S. Department of Agriculture Rural Utilities Service (RUS) helps rural utilities expand and keep their infrastructure up-to-date by providing payments, grants, loans and loan guarantees for the development and commercialization of vital utility services. RUS's programs revitalize rural communities with a variety of infrastructure improvements, and create sustainable opportunities for wealth, new jobs, and increased economic activity in rural America. RUS is the Lead Federal Agency for this Project responsible for ensuring the Project complies with applicable federal regulations.



## What is NEPA?

- The National Environmental Policy Act (NEPA) is a federal law that requires all federal agencies to consider the potential effects of their proposed actions to the human and natural environments.
- NEPA promotes better agency decision-making by ensuring that high quality information is available to officials and the public before the agency decides whether and how to implement a federal action.
- Through the NEPA process, the public has an opportunity to learn about the proposed action and to provide information and comments.
- Many projects are required to conduct environmental analysis and prepare an Environmental Assessment or an Environmental Impact Statement (EIS). An EIS is the highest, most detailed level of analysis.
- The NEPA process is typically followed on projects such as proposed airports, mines, buildings, military complexes, energy facilities, railroad and highways when these projects include a federal action, including a federal decision to provide financial assistance for the project.





# Burlington - Wray

## 230-kV Transmission Project

## Engineering and Electric Transmission

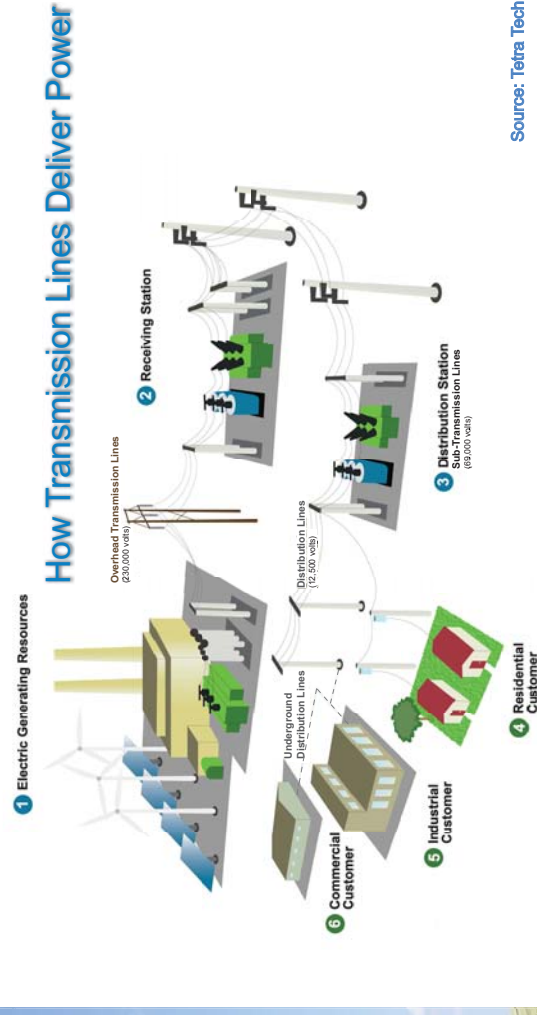
Load growth and new generation resources, including wind power, have put a strain on the existing transmission system of the eastern plains of Colorado.

The proposed Burlington-Wray transmission line would:

- Relieve area transmission constraints
- Improve bulk electrical system reliability
- Allow full dispatch of local generation
- Enable more economical and reliable load serving
- Extend approximately 55-70 miles, in portions of Kit Carson & Yuma Counties between existing substations
- Support proposed renewable energy development in the region

### DESIGN AND CONSTRUCTION

Design Component	Wood H-Frame Structures
ROW Width	150 feet
Distance Between Structures	600 - 1,100 feet
Aboveground Structure Height	65 - 100 feet
Number of Structures per Mile	6-9
Minimum Ground Clearance Beneath Conductor at Maximum Operating Conditions	28 feet



### How Does Electric Transmission Work?

Electricity generation sources include wind, solar, natural gas, fossil fuel, and nuclear generation resources. Generation facilities output electricity at voltages of 13 to 24 kilovolts (kV) and use transformers to step up power to transmission voltages of 115, 230, 345, or 500 kV. Transmission lines rated above 230 kV are normally classified as bulk lines and are capable of carrying large amounts of power over long distances. As voltage increases, current decreases, allowing the electricity to be more efficiently transmitted across extended distances by transmission lines to a substation.

Commonly used transmission line voltages cannot be used by households or businesses. Distribution substations step high voltages down to a distributable voltage. From the substations, electricity is carried via distribution lines at lower voltages (12.5 to 34.5 kV). Distribution lines carry the electricity to small pole mounted or pad mounted transformers that convert the electricity to a usable voltage (110 and 220 volts) in residences and commercial businesses.



# Burlington - Wray

## 230-kV Transmission Project

## Route Selection and Siting Process

### Identification of Preliminary Corridors Phase: COMPLETE

- Step 1.** Define the project Study Area based on required interconnection points.
- Step 2.** Obtain resource data and conduct an opportunity and constraint analysis to identify Opportunity, Avoidance, and Exclusion Areas.
- Step 3.** Identify preliminary alternative corridors.
- Step 4.** Seek public input on preliminary alternative corridors and coordinate with agencies.

### Identification of Preliminary Route. Phase: PRESENT

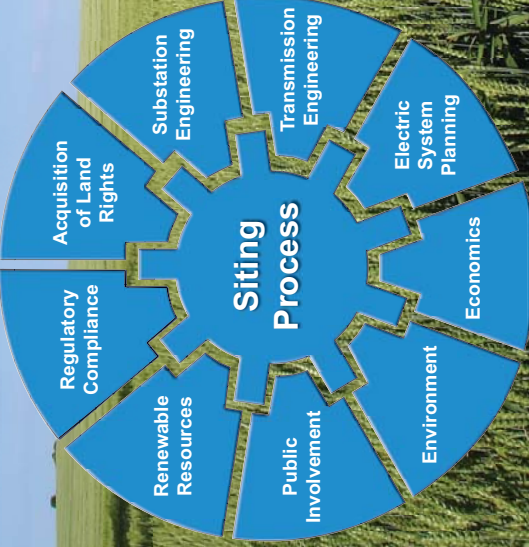
- Step 1.** Address specific concerns identified by the public, such as resource data or sensitive areas, by adding, modifying, or removing preliminary corridors in order to identify alternative routes.
- Step 2:** Conduct preliminary field reconnaissance to identify additional routing opportunities and/or constraints.
- Step 3:** Present the revised corridor alternatives and preliminary alternative routes at public meetings for review and comment by the public and agencies.

### Route Refinement Phase: FUTURE

- Step 1.** Address specific concerns identified by the public, such as resource data or sensitive areas, by adding, modifying, or removing preliminary alternative routes.
- Step 2:** Refine preliminary alternative routes and conduct a comparative analysis of the routes.
- Step 3:** Present the comparative analysis and refined alternative routes to the public and agencies for review and comment at public route refinement meetings.

### Identification of Preferred and Alternative Routes Phase: FUTURE

- Step 1.** Use public comments and stakeholder concerns from the route refinement meetings to make final adjustments to the refined alternative routes
- Step 2:** Identify a Preferred Route and feasible alternatives based on the comparative analysis, public and agency input, and results of route refinement.
- Step 3:** Evaluate the Preferred and Alternative Routes under the National Environmental Policy Act and obtain other required permits and approvals.



### OPPORTUNITIES

Opportunity areas include existing linear features and associated corridors that may provide opportunities for alignment of the transmission line. These areas contain existing land uses that may be compatible with the Project. Examples include:

- Roads and highways
- Railroads
- Natural gas and oil pipelines
- Other existing electric transmission lines
- Property line boundaries

### CONSTRAINTS

Avoidance areas include sensitive areas that potentially could incur environmental impacts or result in land use conflicts if directly affected by the Project.

Exclusion Areas are locations with the highest level of sensitivity, including those areas with regulatory or legislative designations or extreme physical constraints not compatible with construction, operation, or maintenance of the Project. Examples of typical constraints include:

- Wetland or riparian areas
- Mechanical irrigation structures
- Designated critical habitat
- Mineral resources activity areas
- Archaeological sites
- State parks, national parks
- Incompatible, rough terrain
- Airports
- Communication towers



# Burlington - Wray

## 230-kV Transmission Project



## Working with Landowners

### Establishing Rights-of-Ways

An easement is a permanent right that would authorize Tri-State Generation and Transmission Association, Inc. (Tri-State) to use the right-of-way (ROW) to build and maintain a transmission line on private or public property. A ROW is the land area that would be acquired by a utility for the transmission line. The ROW for the Burlington-Wray Project would vary, and is developed based on several factors including the voltage of the transmission line, structure spacing, conductor tension, operational safety, and maintenance. Safety requirements are determined by the National Electric Safety Code (NESC) and the Rural Utilities Service. For this project, the ROW generally required would be 150 feet. Tri-State typically contracts with qualified land management and acquisition consultants to obtain the easements.

Temporary access or survey permission from landowners is requested in order for Tri-State to conduct applicable environmental, cultural, land and geotechnical surveys which are needed in order to complete a detailed assessment of the transmission line alignment.

Present project to landowners during siting process



Request survey permission and temporary access for environmental, cultural, land and geotechnical surveys



Determine property value using market data from recent sales of similar properties



Work with landowners to reach a fair and reasonable settlement for the granted easement

### Easements and Agriculture

**Center Pivots** – Tri-State will place structures to avoid irrigation equipment and its operation to the extent possible. Structures will normally be placed on the outer edges of the pivot and be sized to span the edges of the irrigation area. Any impacts to pivots will be negotiated with the individual landowner.

**Planting and Harvesting** – Tri-State will work with individual landowners to avoid construction or line maintenance during the planting and harvesting seasons. If damage to crops cannot be avoided, compensation for crop loss will be offered.

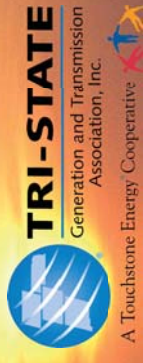
**Livestock** – During construction, segments of fences may be removed or gates installed to facilitate the access or use of construction equipment. Tri-State will construct temporary fences and work with landowners to minimize impacts to livestock and their safety.





# Burlington - Wray

## 230-kV Transmission Project

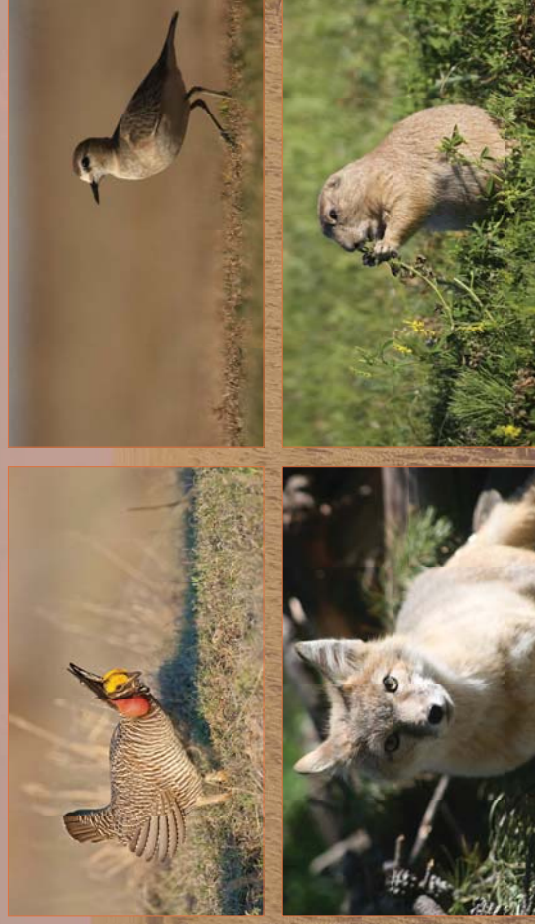


## Natural and Cultural Resources

The Rural Utilities Service (RUS) and Tri-State Generation and Transmission Association, Inc. (Tri-State) are responsible for identifying, assessing, and minimizing potential impacts of the Project to natural and cultural resources through Project design or mitigation measures. To this end, RUS and Tri-State will:

- Collect resource data and conduct desktop analyses to help determine the presence of known resources in the Study Area
- Compare transmission line location alternatives to determine which resources potentially may be affected and to what degree
- Quantify potential disturbances
- Gather public and other federal, state, and local agency input in selection of a Preferred Alternative
- Conduct biological and cultural resources surveys of the Preferred Alternative
- Consult with agencies such as the U.S. Fish and Wildlife Service, the Colorado Division of Wildlife, the Colorado Office of Archaeology and Historic Preservation, and the U.S. Army Corps of Engineers

The lesser prairie chicken, swift fox, mountain plover, and black-tailed prairie dog, are a few of the grassland species that the Colorado Division of Wildlife has included in its *Conservation Plan for Grassland Species*.



The Preferred Alternative will be surveyed for the presence of cultural resources as part of an Environmental Assessment.





# Opportunities within the Study Area

RESOURCE	OPPORTUNITY AREA (OPTIMIZE USE FOR ROUTING)
Existing Transmission Lines	Within 0.25 miles of existing transmission line corridors (69-kV and above)
Compatible Land Uses	Open land or rangeland, along edges of fields; federal or state land with existing disturbance and otherwise compatible use; designated energy corridors
Roads (interstate, state, county)	Parallel to and within 0.25 miles of road, but not within road right-of-way (ROW)
Railroads	Parallel to and within 0.25 miles of railway, but not on railroad ROW
Canals/Ditches	Parallel to and within 100 feet of a canal or ditch

# Constraints within the Study Area

TYPE OF CONSTRAINT	AVOIDANCE AREA	EXCLUSION AREA
<b>Land Use and Jurisdiction</b>		
Land cover and surface water	Developed, medium intensity; developed, high intensity; within boundary of emergent and woody wetlands; within 660 feet of perennial waterways and lakes; within floodplain	Open water; within 100 feet of perennial waterways, springs and lakes
Residences (identified at this time only as Existing Structures)	500 feet	100 feet
Cemeteries	250 feet	Within boundary
Commercial businesses*	250 feet	100 feet
Churches	500 feet	100 feet
Hospitals, nursing homes	1,320 feet (0.25 mile)	100 feet
Schools, kindergartens, nurseries (including registered day care facilities)	1,320 feet (0.25 mile)	100 feet
Municipal boundaries	Within incorporated or unincorporated municipal boundaries	
Private airstrips		5,000 feet or within Federal Aviation Administration (FAA) prescribed boundaries described in 14 CFR 77
FAA-registered airports	10,000 feet	7,000 feet or within FAA prescribed boundaries described in 14 CFR 77
Heliports	---	2,000 feet
Directional beacon (such as those used by the FAA)	---	1,320 feet (0.25 mile)
Radio transmitters	AM – 1,000 feet, FM – 500 feet	150 feet
Television transmitters	---	500 feet
Communication towers	Within 150 feet of Federal Communications Commission (FCC) structure	Within 50 feet of FCC structure
Cell phone towers	---	75 feet
Oil and gas wells		Generally, 75 feet from the transmission line centerline. All oil and gas facilities should be outside the transmission line ROW.
Wind energy turbines		Generally, 75 feet from the transmission line centerline. All turbines should be outside the transmission line ROW.
Federally designated lands not compatible with transmission lines – Natural Resources Conservation Service, Wetland Reserve Program		Within boundary
State Lands not compatible with transmission lines - State Parks, State Wildlife Area	Within boundaries of State Wildlife Areas	Within boundary of State Parks
Municipal boundaries	Within incorporated or unincorporated municipal boundaries	
<b>Agricultural Land</b>		
Cropland	Farmland of statewide importance	Within mechanical irrigation footprint
Animal feed lots	---	100 feet
<b>Historic and Archaeological Sites</b>		
Recorded prehistoric/historical and archeological Sites	1,000 feet	100 feet
Sites listed on the National Register of Historic Places-listed or determined eligible for listing	1,000 feet	100 feet
Publicly-mapped historic cemeteries*	1,000 feet	100 feet
State historic markers*	1,000 feet	100 feet
Areas of high and moderate prehistoric and historic site potential*	1,000 feet	100 feet
<b>Biological Resources</b>		
Greater prairie chicken production areas	Within boundary of production area	---
Raptor habitat	---	Within 0.25 miles of known active nests for most raptors.
Bald eagle habitat	---	Within 0.5 mile of active nests, active winter night roosts. Also hunting perches are determined site-specifically.
Burrowing owl habitat	---	150 feet from March 15 to October 31. Also efforts to eradicate prairie dogs should occur outside this time period.
Great blue heron habitat	Nesting area	
Geology and Soils		
Slopes	Areas with greater than 15 percent slope	

\*None currently identified

\*\*Ground-truthing of structure type has not been conducted yet; therefore, types of structures have not been differentiated (such as by house, barn, commercial businesses, garage, etc) at this time.

**APPENDIX G**  
**SCOPING COMMENT FORM**



The Environmental Assessment for the Burlington-Wray 230-kV Transmission Project will analyze the environmental consequences of implementing the proposed action and alternatives to the proposed action, including a No Action Alternative. RUS encourages the public to send comments concerning the project as proposed; other feasible alternative locations; possible mitigation measures; and any other information relevant to the proposed action. Other alternatives that may be considered in detail include additional alignments.

**Please provide your comments on the Burlington-Wray 230-kV Transmission Project in the space provided below:**

This image shows a single sheet of white paper with horizontal ruling lines. The lines are evenly spaced and run across the width of the page. There are no margins, text, or other markings on the paper.



TAPE HERE, DO NOT STAPLE

Place  
Stamp  
Here

USDA Rural Utilities Service  
Attn: Burlington-Wray 230-kV Transmission Project Manager  
1400 Independence Avenue SW  
Washington, DC 20250-1571

**USDA Rural Utilities Service**  
**Attn: Burlington-Wray 230-kV Transmission Project Manager**  
**1400 Independence Avenue SW**  
**Washington, DC 20250-1571**

FOLD HERE

**Please submit your comments by April 6, 2012.**

You may submit comments related to the Burlington-Wray 230-kV Transmission Project by any of the following methods:

- Leave this form at the public scoping meeting
- Web site: <http://www.burlingtonwray.com>
- E-mail: [BurlingtonWray@tristategt.org](mailto:BurlingtonWray@tristategt.org)
- Mail: **USDA Rural Utilities Service**  
**Attn: Burlington-Wray 230-kV Transmission Project Manager**  
**1400 Independence Avenue SW**  
**Washington, DC 20250-1571**

FOLD HERE

*Please tell us how to reach you. Before including your address, phone number, e-mail address, or other personal identifying information in your comment, you should be aware that your entire comment including your personal identifying information may be made publicly available at any time.*

**CONTACT INFORMATION**

**Name:** \_\_\_\_\_

**Organization and Title:** \_\_\_\_\_

**Mailing Address:** \_\_\_\_\_

**City:** \_\_\_\_\_ **State:** \_\_\_\_\_ **Zip Code:** \_\_\_\_\_

**Daytime Phone (Optional):** \_\_\_\_\_

**If you would like to receive electronic newsletters on the project, please provide an email address:** \_\_\_\_\_

Please fold this form letter style with your contact information facing inward when mailing.

**APPENDIX H**  
**INDEX OF SCOPING COMMENTS**

<b>Commenter's Last Name</b>	<b>Commenter's First Name(s)</b>	<b>Individual, Business, Agency, NGO, Tribe</b>	<b>Date Comments Received</b>
Brueggeman	Larry	Individual	3/7/2012
Cody	Gerald	Individual	3/6/2012
Conlin	C.	Individual	3/23/2012
Corliss	Bert	Individual	3/7/2012
Dickson	Marvin	Individual	3/20/2012
Dorman	Michael	Individual	3/27/2012
Dorman	Timothy	Individual	3/27/2012
Franz	Kyle	Individual	3/6/2012
Gramm	Ron	Individual	3/13/2012
Hays	Norm and Diane	Individual	3/13/2012
Hill	Connie	Individual	3/23/2012
Ohnmacht	Norbert and Paulette	Individual	3/6/2012
Queen	Gary	Individual	3/6/2012
Schabver	Beulah P.	Individual	3/6/2012
Schafer	Doug	Individual	3/6/2012
Schepler	Sherry	Individual	3/8/2012
Smith	RB and Betty	Individual	3/13/2012
Suman	Lorena	Individual	3/26/2012
Wieser	Chester and Judy	Individual	3/26/2012
Wieser	Dennis	Individual	3/7/2012
Wilson	Dave	Individual	3/7/2012
Wilson	Pete and BJ	Individual	3/7/2012
Wingfield	David	Individual	3/23/2012
Zwirn	Chester	Individual	3/20/2012
Kiyan, LLC		Business	4/6/2012
Kroening		Colorado Parks and Wildlife	4/30/2012
Salas	Crystal	National Park Service	3/15/2012