



Application Mapping Overview

USDA RUS ReConnect Program



United States
Department of
Agriculture

Rural Development

Agenda

- Public Service Area Map
- Service Area Mapping Tool
- Available Resources
- Q&A

Public Service Area Map



Exploring Potential Service Areas

Combo

Up to \$250M Available

Potential awardees must meet a 100 Mbps symmetrical minimum service requirement in all proposed service areas. The maximum award amount is \$25M for the loan and \$25M for the grant, and the interest rate is set at the US Treasury Rate. The applications are evaluated in a competitive process.

100% Grant

Up to \$350M Available

Potential awardees must meet a 100 Mbps symmetrical minimum service requirement in all proposed service areas. The maximum award amount is \$35M, and a 25% match is required. The applications are evaluated in a competitive process.



Frequently Asked Questions

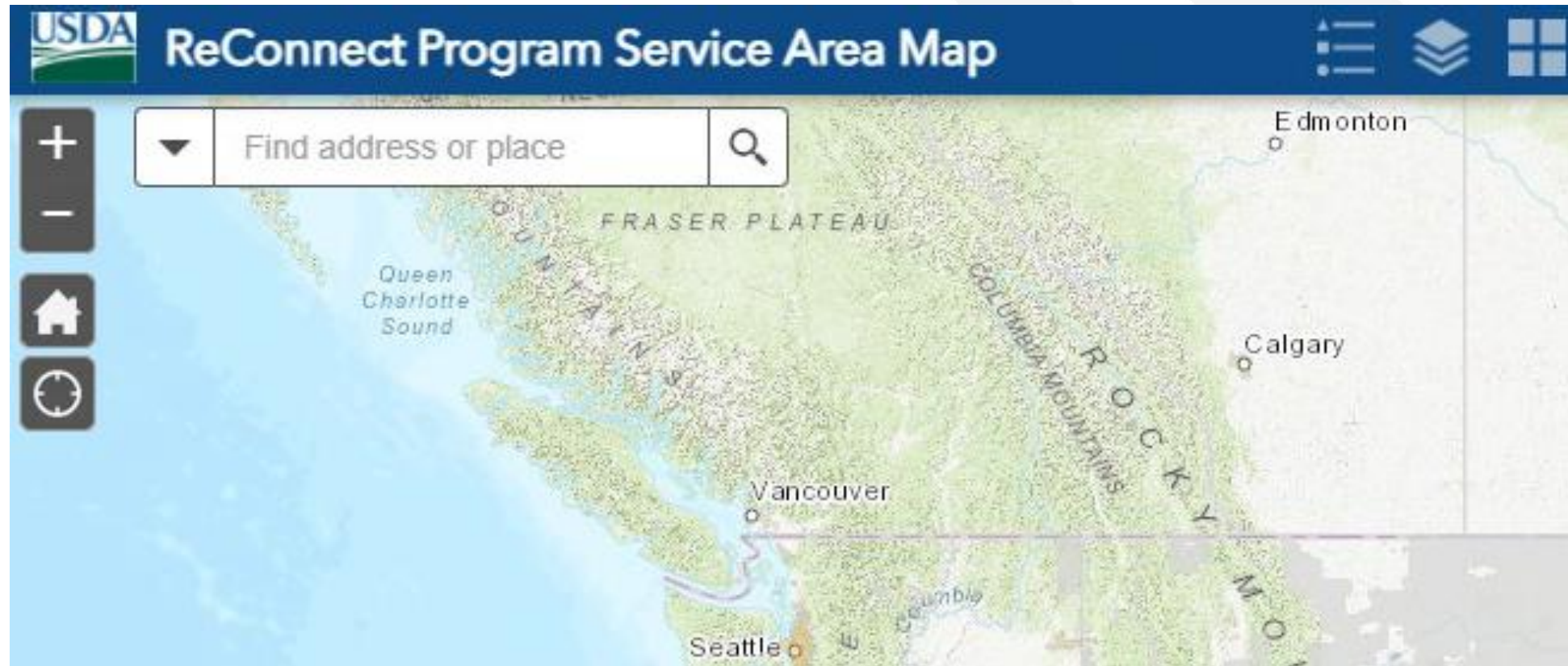


Eligible Service Area



NEW Mapping Tool

Public Service Area Map



Map Layers

Layer List

Layers

▶

☐

Eligibility: FAR Level 4

...

▶

☐

Eligibility: Non-Rural Areas

...

▶

☐

Eligibility: Pending Applications

...

▶

☐

Eligibility: Protected Broadband Borrower Service Areas

...

▶

☐

Evaluation: Economic Need of the Community (SAIPE)

...

▶

☐

Evaluation: Rurality - 100 Miles from Urbanized Areas

...

▶

☐

Evaluation: Socially Vulnerable Communities

...

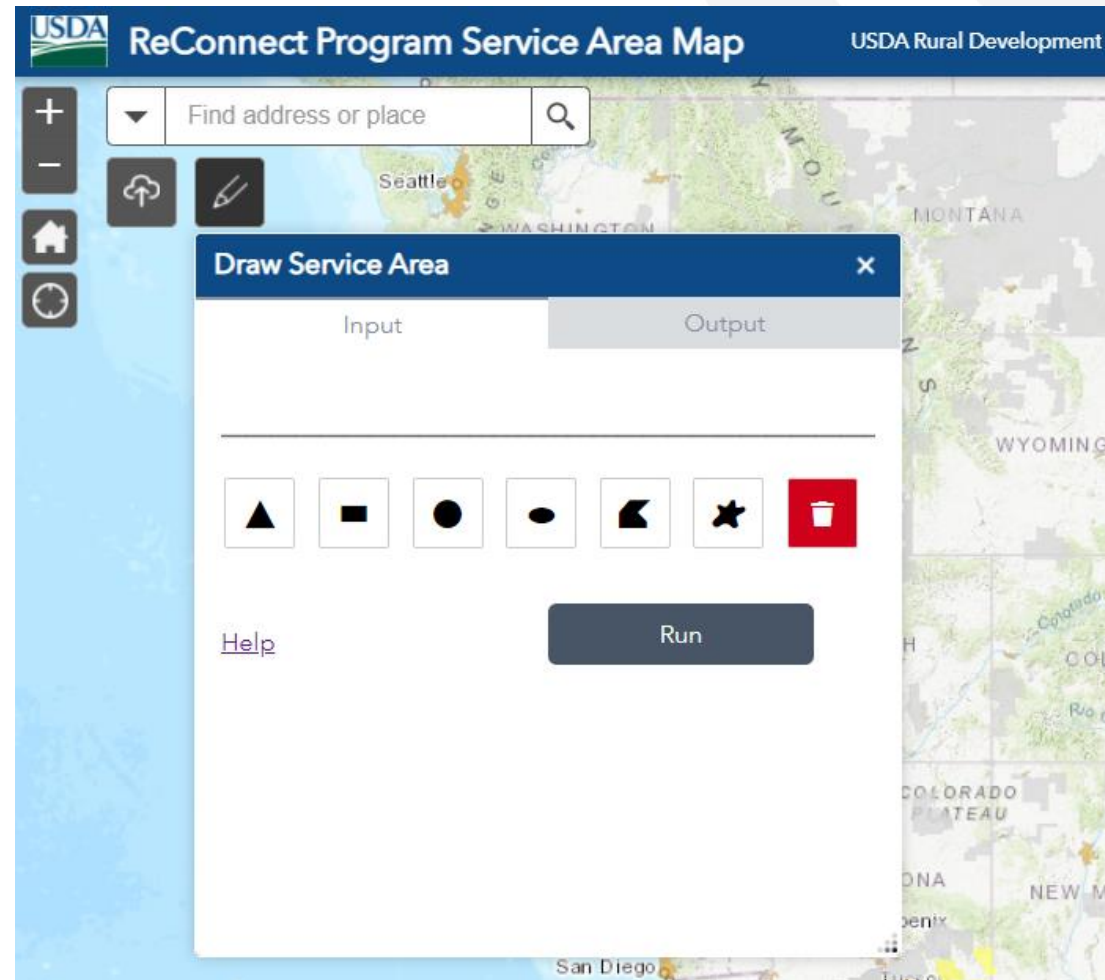
▶

☐

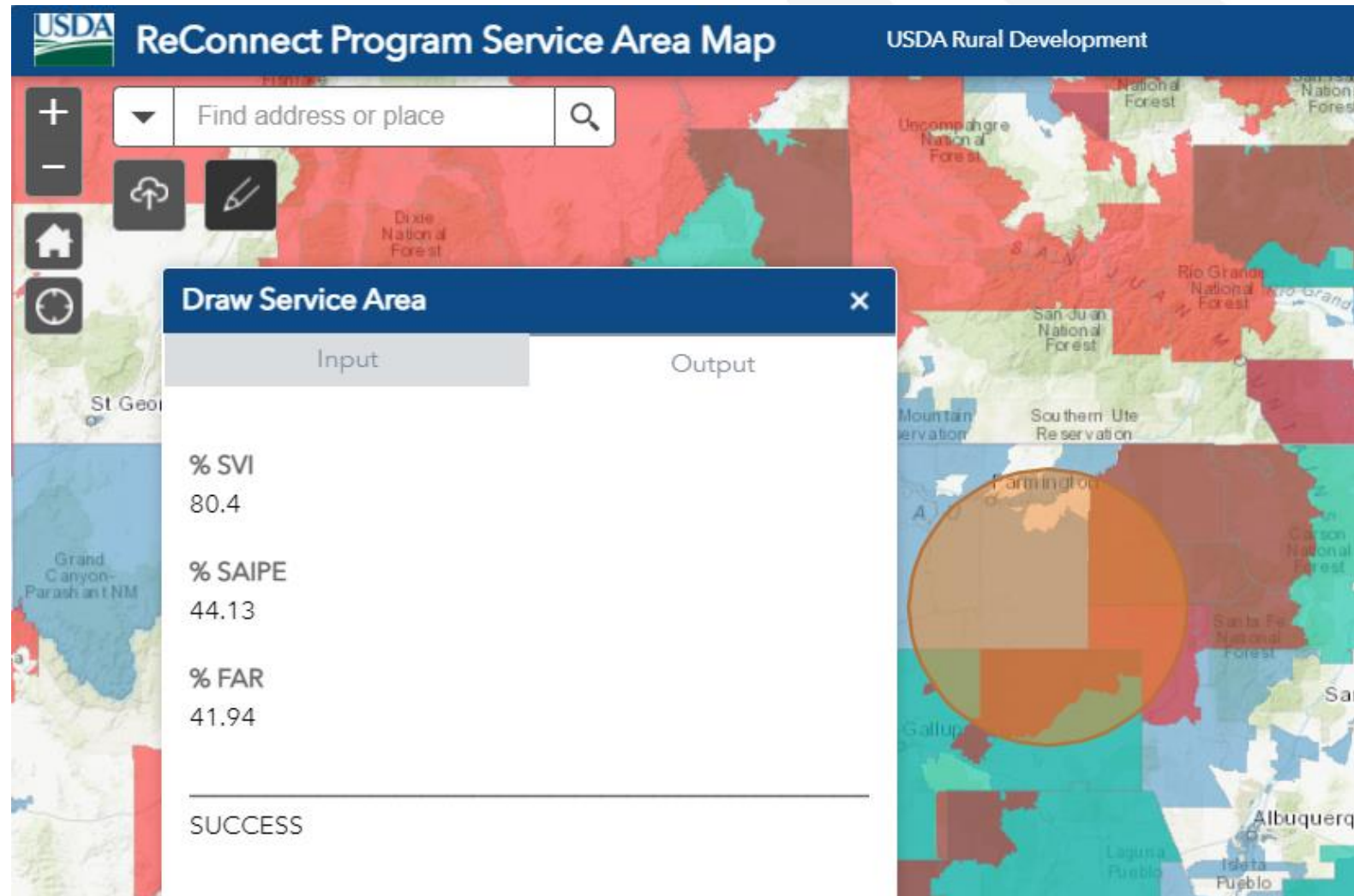
Tribal Lands

...

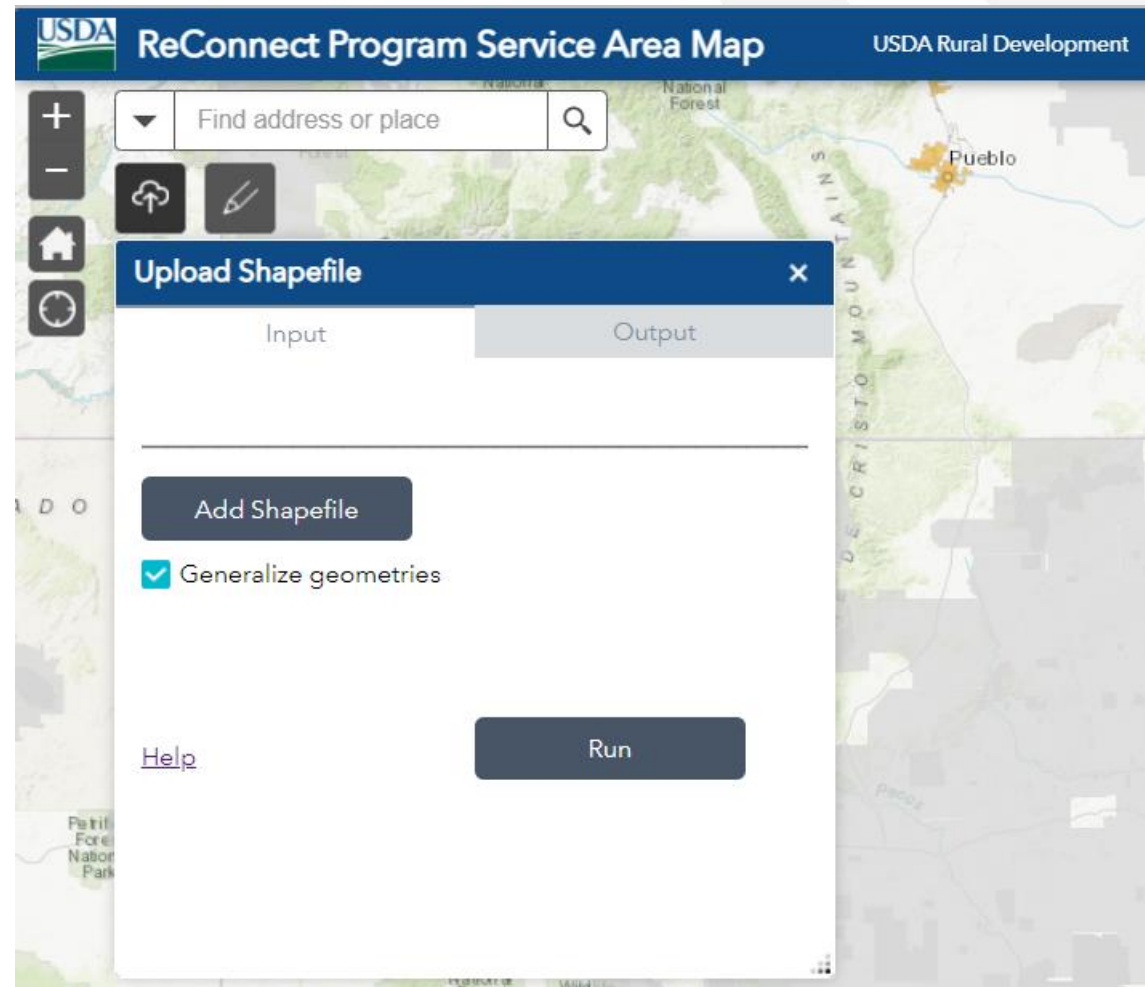
Drawing Service Areas



Service Area Output Information



Upload Shapefile



Map Datasets



Map Datasets

USDA has made the datasets used in developing the Service Area Map available to the public for download:

- Evaluation Criteria Datasets
 - Economic Need of the Community (SAIPE)
 - Rurality – 100 miles from Urbanized areas
 - Socially Vulnerable Communities
- Evaluation Criteria and Service Area Eligibility Dataset:
 - Tribal Lands
- Service Area Eligibility Criteria Datasets
 - FAR Level 4
 - Non-Rural Areas
 - Pending Applications
 - Protected Broadband Borrower Service Areas

Map Datasets (Continued)

- The Service Area Map Datasets can be found at <https://www.usda.gov/reconnect/service-area-map-datasets>
- This page provides:
 - A description of each dataset
 - Ability to download a shapefile or Excel file of each dataset

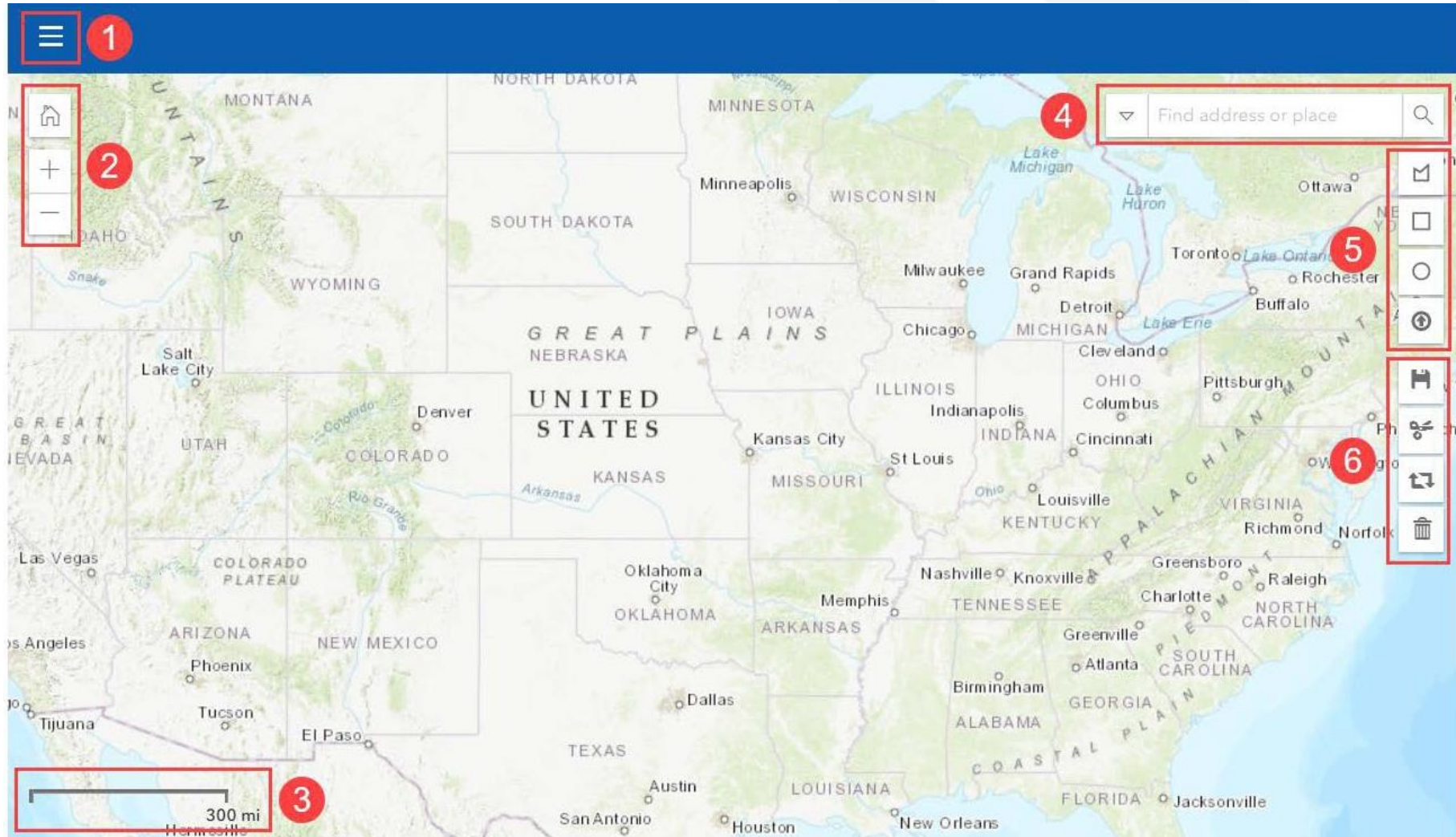
Service Area Mapping Tool



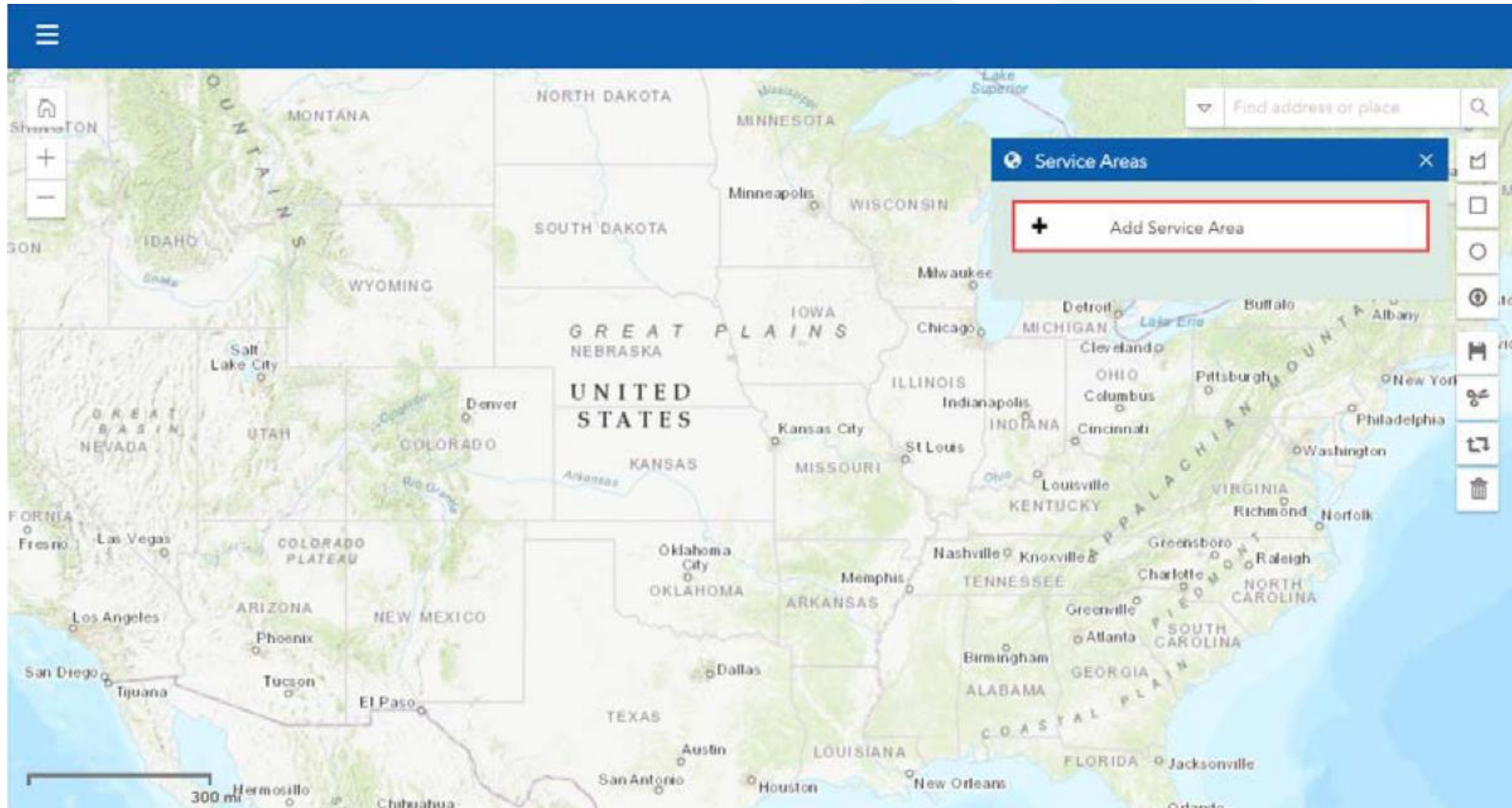
Introduction to Service Area Mapping in ReConnect Application Portal

- The Service Area Mapping Tool is used to draw PFSA's and NFSA's
- A Proposed Funded Service Area (PFSA) is defined as the area where the applicant is requesting funds to provide broadband service.
- A Non-Funded Service Area (NFSA) is defined as any area in which the applicant offers service or intends to offer service during the forecast period but is not a part of its PFSA.



Service Area Mapping Tool




Adding Service Areas




Add Service Area Window

 Add Service Area 

Service Area Funding*

1 

Service Area Type*

2 

Service Area Name*

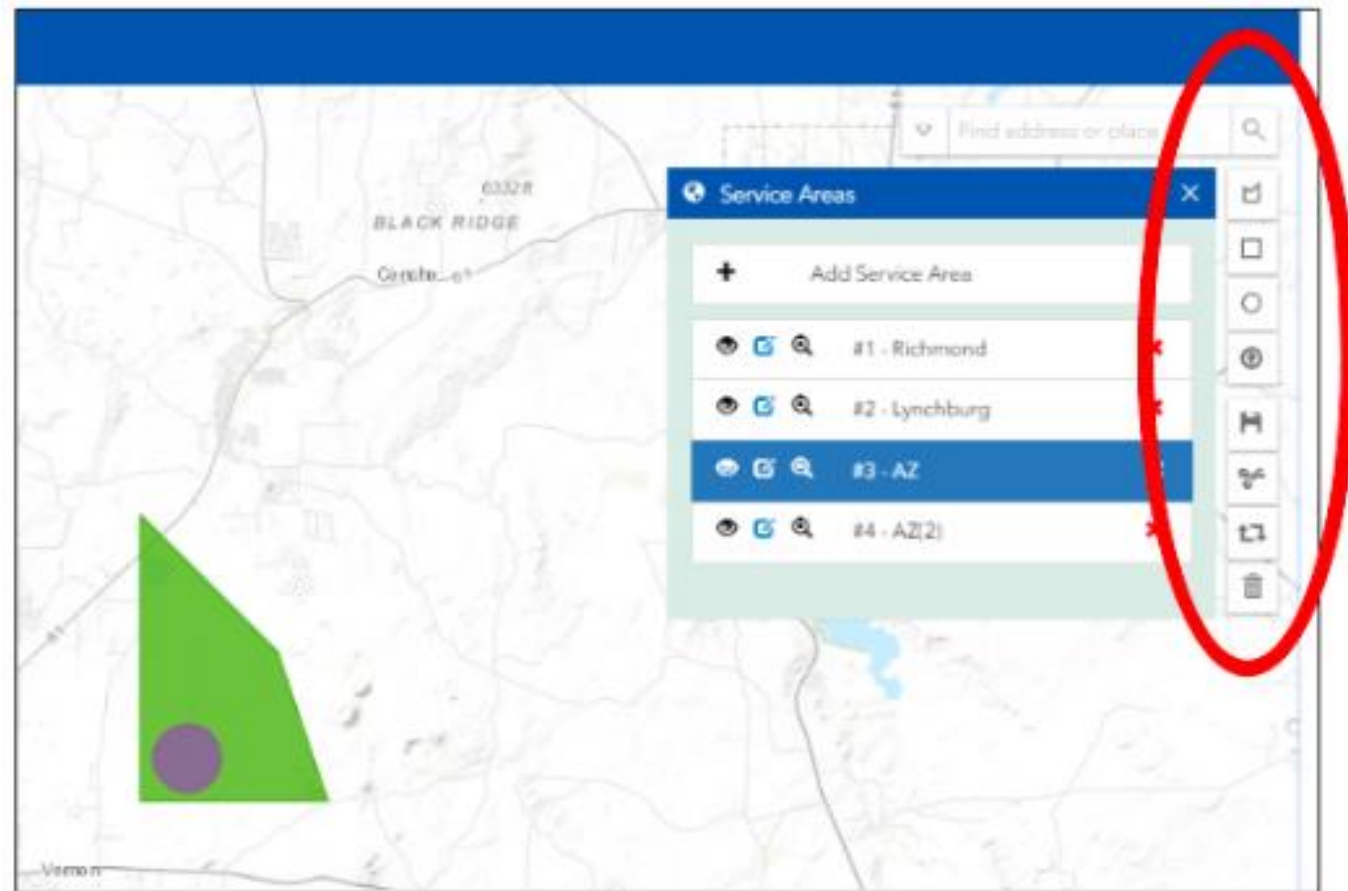
3

4 Is this service area located in any of the following territories or possessions of the United States: Palau, Marshall Islands, Federated States of Micronesia, or Guam?

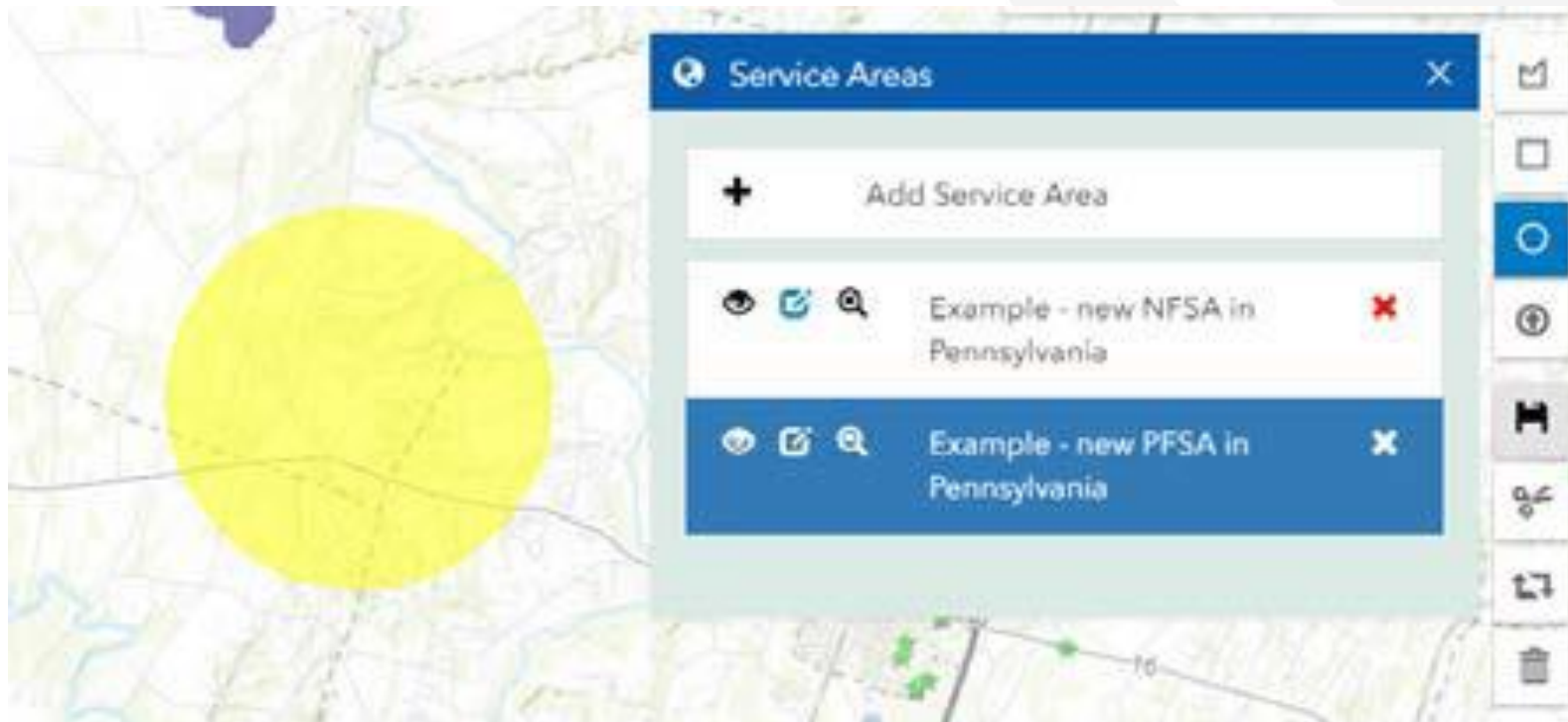
Yes ☐ No ☒

5

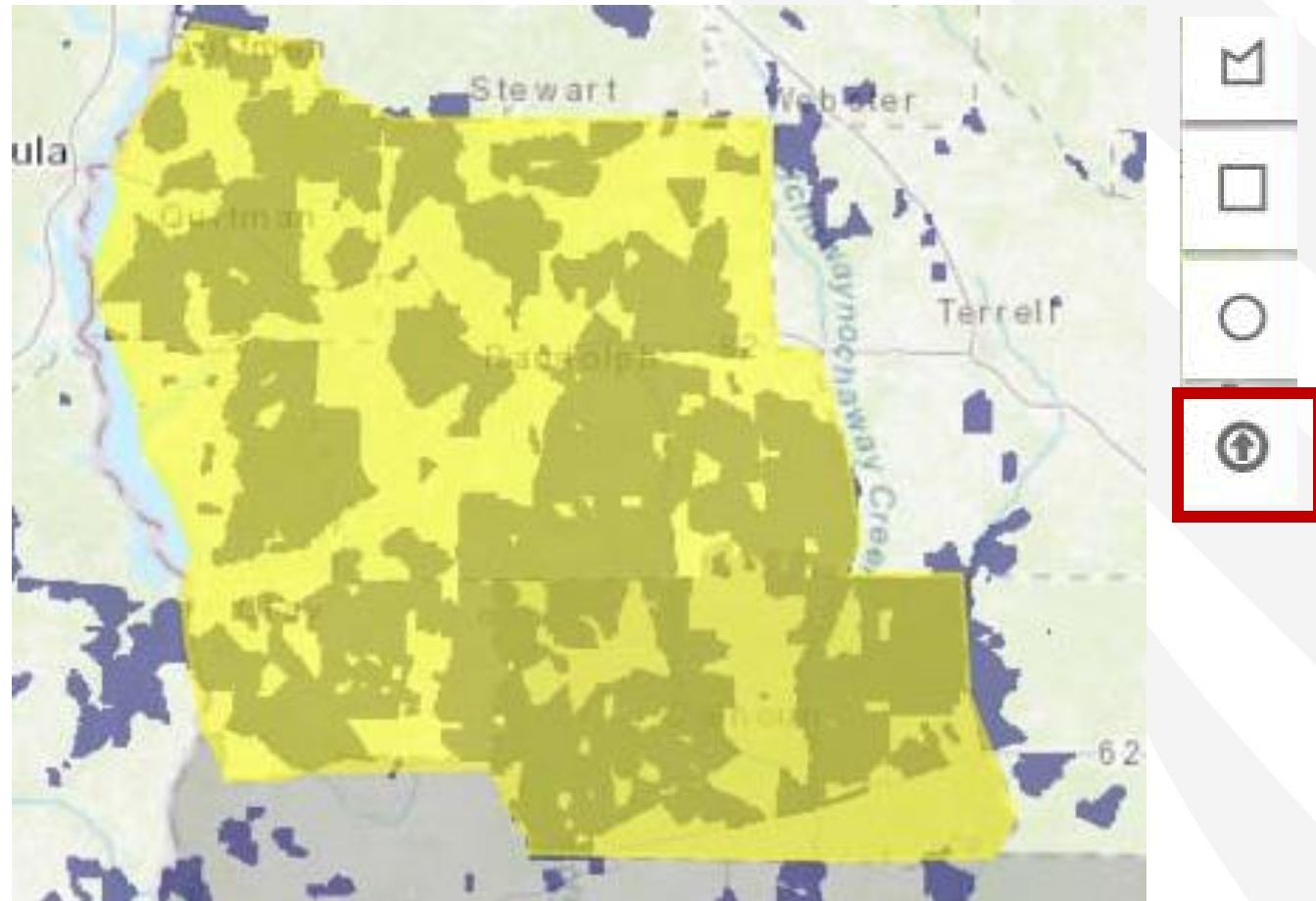
Creating a Service Area Polygon



Drawing Service Areas



Uploading Shapefiles

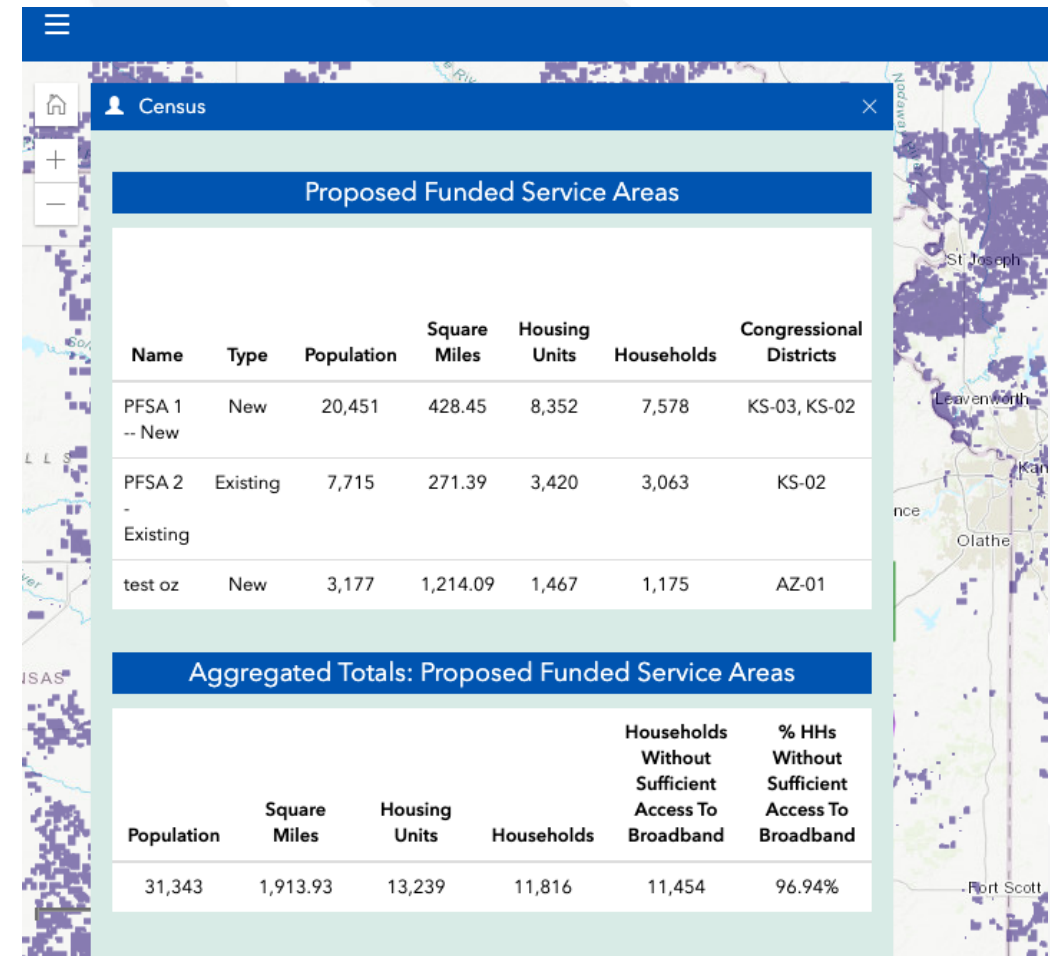


Marking Households Without Sufficient Access to Broadband



Service Area Data

- Once an applicant has drawn their service area, it is possible to see a variety of data on said service area including: population, household counts, square mileage, congressional districts, etc.
- Applicants can use this information to ensure they have drawn their service areas correctly.



Census

Proposed Funded Service Areas

Name	Type	Population	Square Miles	Housing Units	Households	Congressional Districts
PFSA 1 -- New	New	20,451	428.45	8,352	7,578	KS-03, KS-02
PFSA 2 Existing	Existing	7,715	271.39	3,420	3,063	KS-02
test oz	New	3,177	1,214.09	1,467	1,175	AZ-01

Aggregated Totals: Proposed Funded Service Areas

Population	Square Miles	Housing Units	Households	Households Without Sufficient Access To Broadband	% HHs Without Sufficient Access To Broadband
31,343	1,913.93	13,239	11,816	11,454	96.94%

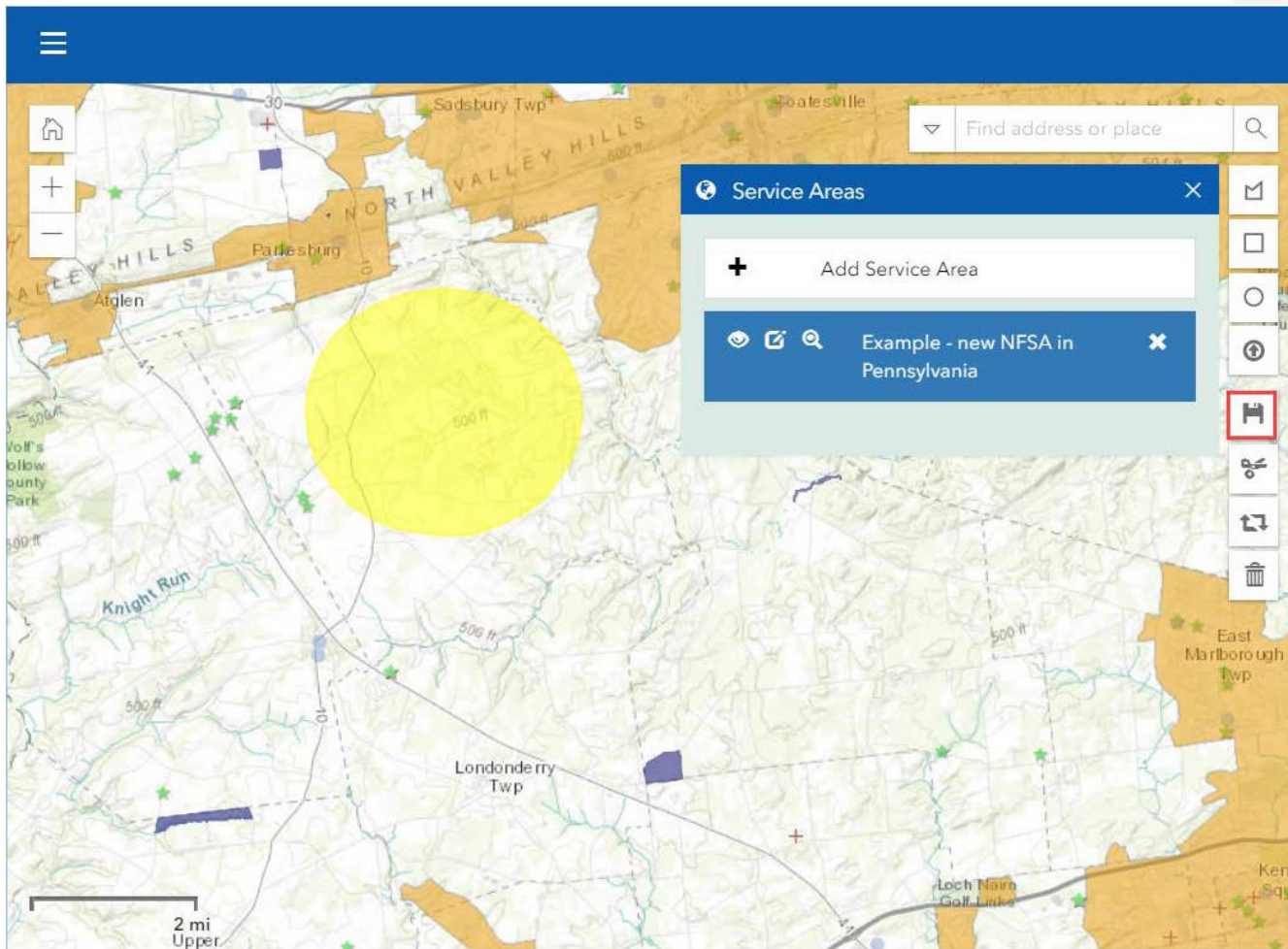
Service Area Data (continued)

Census Designated Places				
Counties				
County Name	County FIPS	State FIPS	Population	MHI
New Castle County, Delaware	003	10	521,325	\$62,474.00
County Subdivisions/Townships				
Community Name	County FIPS	State FIPS	Population	MHI
Brandywine CCD, New Castle County, Delaware	003	10	34,275	\$72,837.00
Glasgow CCD, New Castle County, Delaware	003	10	14,987	\$84,823.00
New Castle CCD, New Castle County, Delaware	003	10	33,709	\$54,558.00

Service Area Data (continued)

Demographics	
Population Breakdown By Race	
Race	Population
Asian	4
Black or African American	0
Native American or Alaskan Native	0
Native Hawaiian or Pacific Islander	0
White	109
Multiple Races Selected	1
Other Race	0
Population Breakdown By Ethnicity	
Ethnicity	Population
Hispanic or Latino	1
Not Hispanic or Latino	113

Saving Service Areas

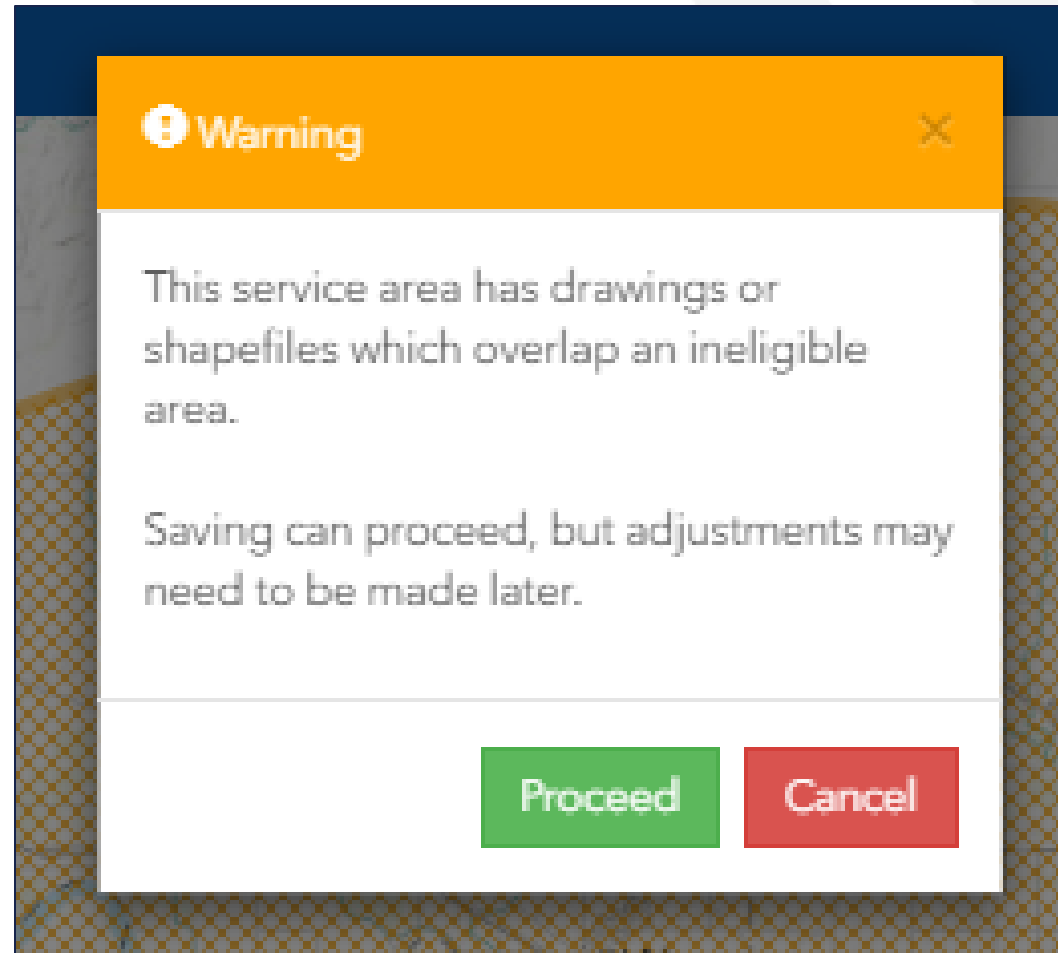


 Success

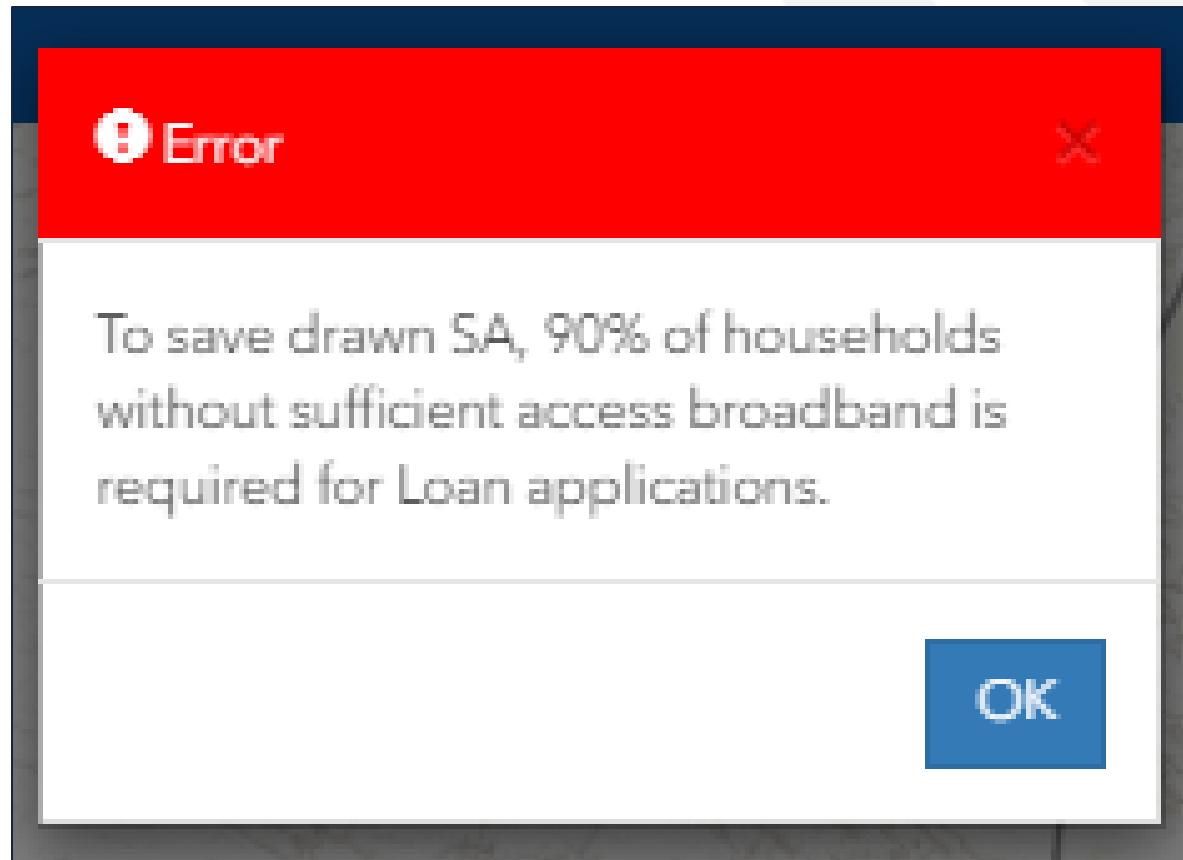
The service area has been saved successfully.

OK

Ineligible Area Encroachment



Without Sufficient Access to Broadband Error Warning



Service Area Map Linkages



Service Area Map Linkages

The PFSA(s) inform multiple sections of the applications:

- Capital Investment Workbook (CIW)
- Local Network Services Revenue (Subscriber Projections)
- Evaluation Criteria
- Construction Map and Environmental Components of Application
- Competitor Service Offering

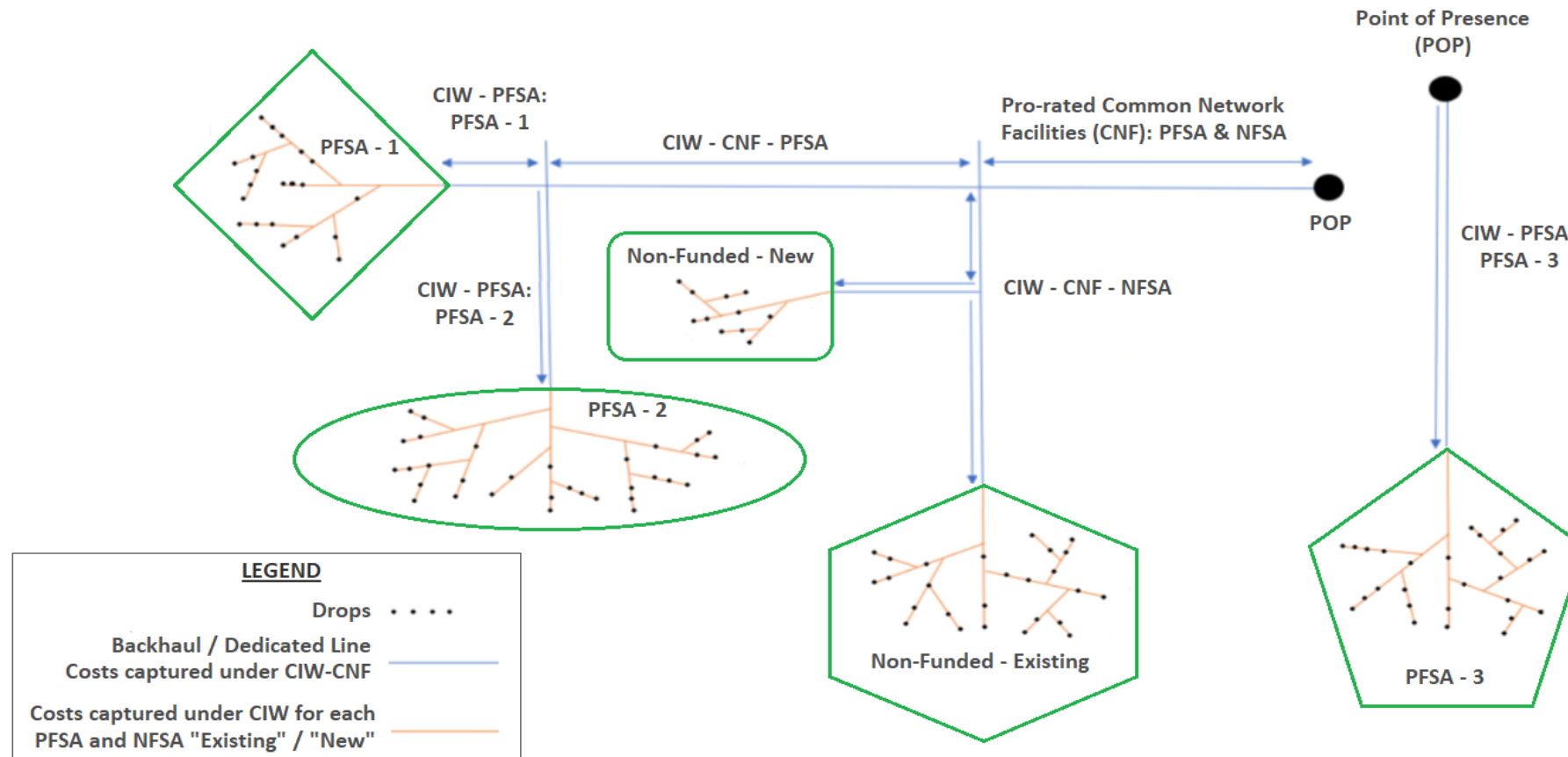
Note: Changes to the PFSAs and NFSAs may have downstream effects on the components of the application. It is necessary to map your service areas before going on to other parts of the application

Tips



What to Include in the Service Area Map

- Proposed Funded and Non-Funded Service Areas? **YES**
- Common Network Facility Assets such as Backhaul? **NO**



Available Resources



Available Resources

- **Register for upcoming events** <https://www.usda.gov/reconnect/events>
- **Application Guide** https://www.rd.usda.gov/files/ReConnect_Program_Application_Guide.pdf
- **ReConnect website** <https://www.usda.gov/reconnect>
 - Fact Sheets & Frequently Asked Questions
- **Contact Us** <https://www.usda.gov/reconnect/contact-us>
- **FY 2022 Funding Opportunity Announcement**
 - <https://www.federalregister.gov/documents/2021/10/25/2021-23128/rural-econnectivity-program>
- **Regulation** <https://www.govinfo.gov/content/pkg/FR-2021-02-26/pdf/2021-03443.pdf>
- **General Field Representative (GFR) & State Office**
 - <https://www.rd.usda.gov/contact-us/telecom-gfr/all>
 - <https://www.rd.usda.gov/contact-us/state-offices>



